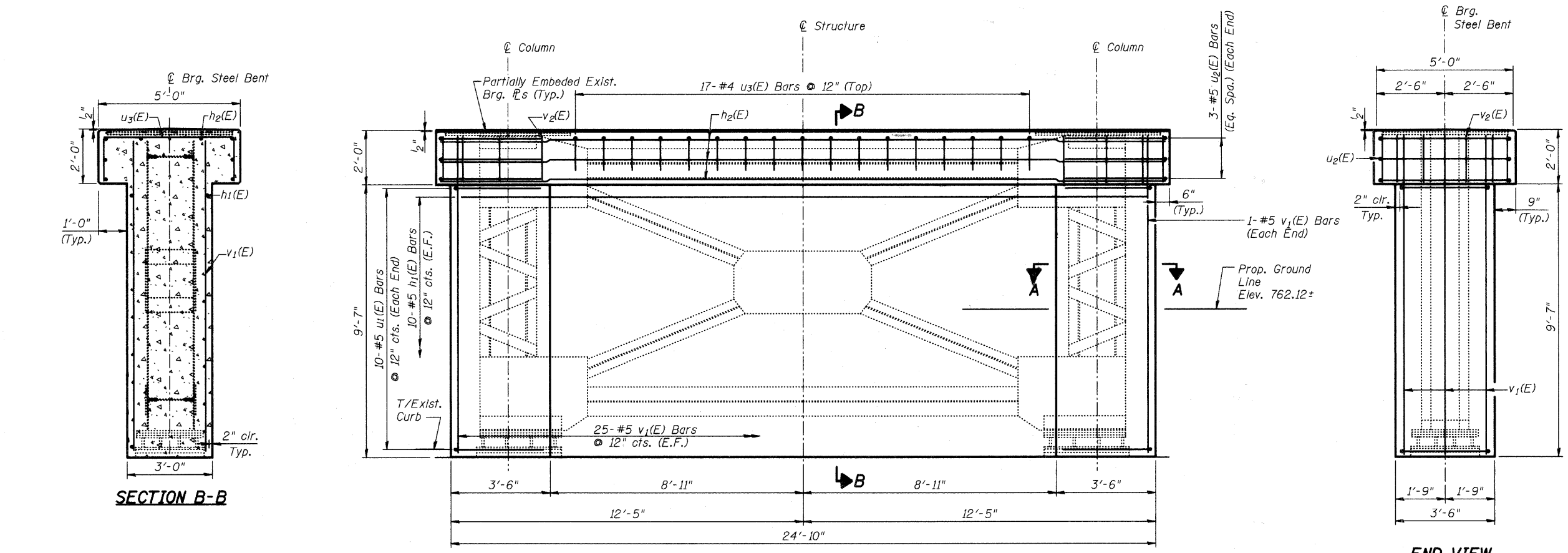
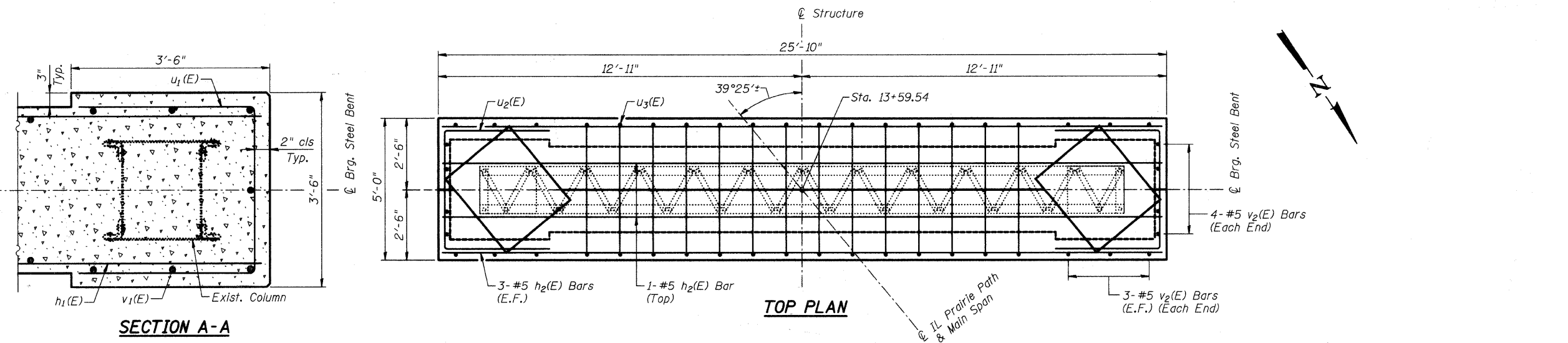
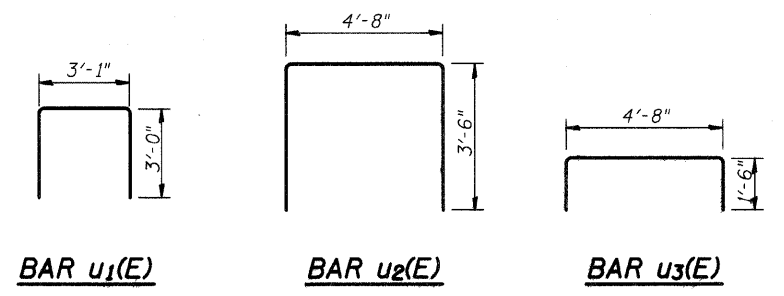


FISCAL YEAR	COUNTY	COUNTY HIGHWAY	TOTAL SHEETS	SHEET NO.
2007	DUPAGE	*	241	156
CONTRACT NUMBER 83908				
SECTION 97-00084-00-BR				
• FAU 3549/ FAU 1432				



BILL OF MATERIAL

Bar	No.	Size	Length	Shape
h1(E)	20	#5	24'-4"	—
h2(E)	8	#5	25'-6"	—
u1(E)	20	#5	9'-1"	⊥
u2(E)	6	#5	11'-8"	⊥
u3(E)	17	#4	7'-8"	⊥
v1(E)	50	#5	11'-2"	—
v2(E)	20	#5	1'-8"	—
Concrete Structures			Cu. Yd.	37.2
Reinforcement Bars, Epoxy Coated			Pound	1,690
Form Liner Limestone Surface			Sq. Ft.	342



END VIEW

STEEL BENT ELEVATION
(Looking South)

SECTION B-B

SECTION A-A

CITY OF WHEATON

ILLINOIS PRAIRIE PATH BRIDGE
OVER UNION PACIFIC RAILROAD,
FRONT STREET AND WESLEY STREET
**STEEL BENT ENCASEMENT
DETAILS**

DRAWN	JM/PES/TV	SHEET NO.	
CHECKED	VEVS	IPP-19	
APPROVED	BSK		
DATE	06/04/2008		
SCALE	NONE		

HDR
HDR Engineering, Inc.

C:\Users\jms11\Documents\2008\83908\83908-156.dwg 6/27/2008 3:28:11 PM