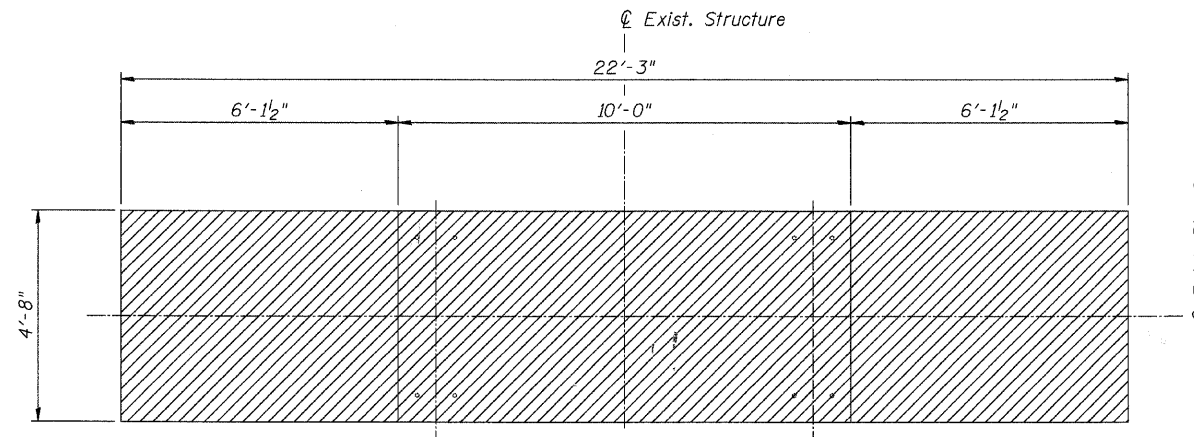
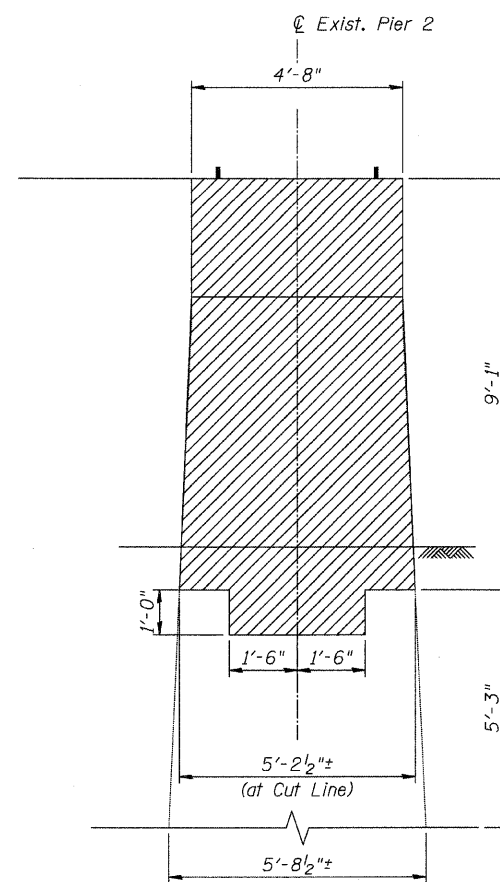


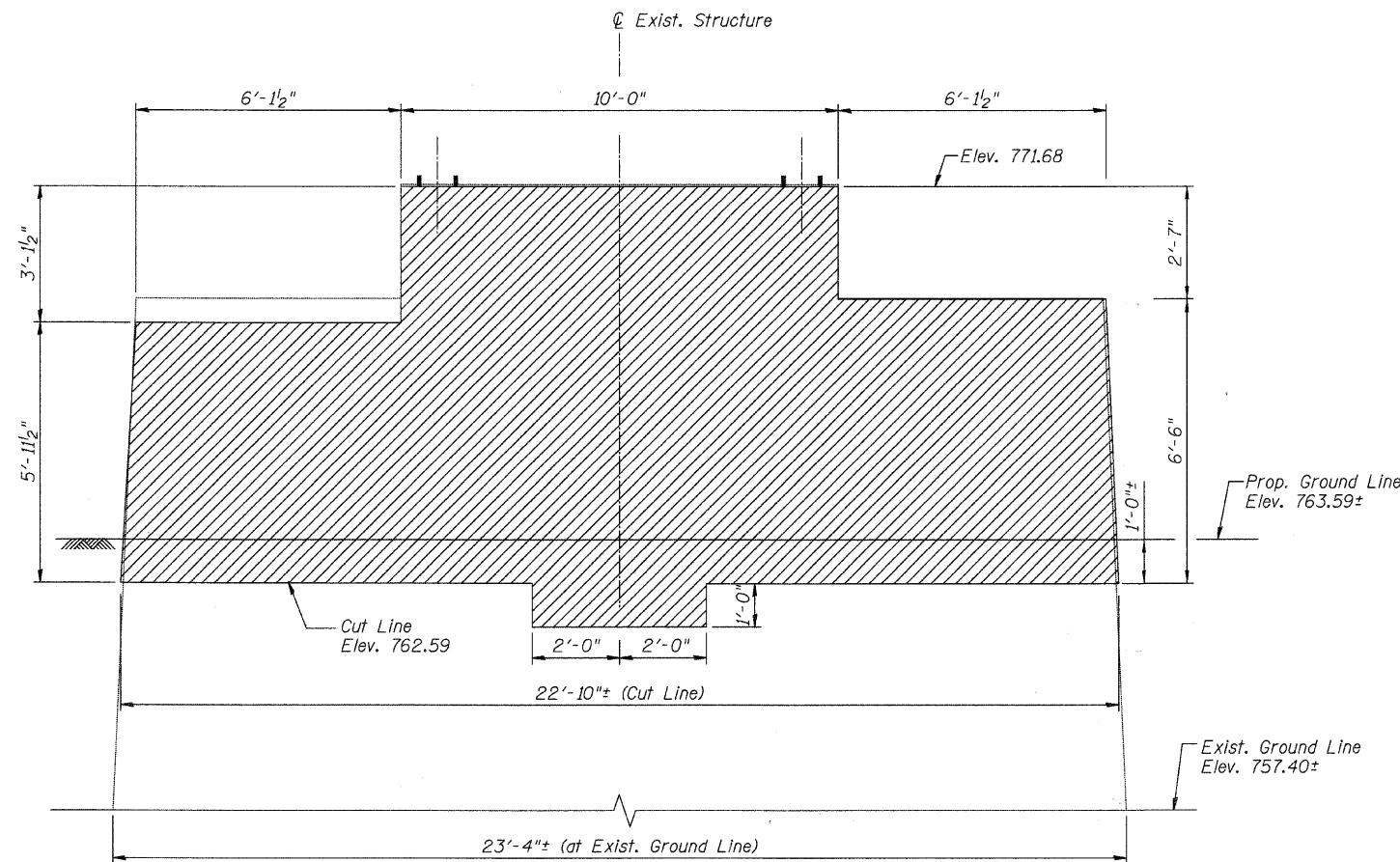
FISCAL YEAR	COUNTY	COUNTY HIGHWAY	TOTAL SHEETS	SHEET NO.
2007	DUPAGE	*	241	160
CONTRACT NUMBER 83908				
SECTION 97-00084-00-BR				
• FAU 3549/ FAU 1432				



TOP VIEW



END VIEW



ELEVATION  
(Looking North)



LEGEND:



BILL OF MATERIAL

Item	Unit	Quantity
Concrete Removal	Cu. Yd.	31.1

CITY OF WHEATON

ILLINOIS PRAIRIE PATH BRIDGE  
 OVER UNION PACIFIC RAILROAD,  
 FRONT STREET AND WESLEY STREET

PIER 2 REMOVAL DETAILS

DRAWN	JM/PES/TV	SHEET NO.
CHECKED	VEVS	IPP-23
APPROVED	BSK	
DATE	06/04/2008	
SCALE	NONE	

**HDR**  
 HDR Engineering, Inc.