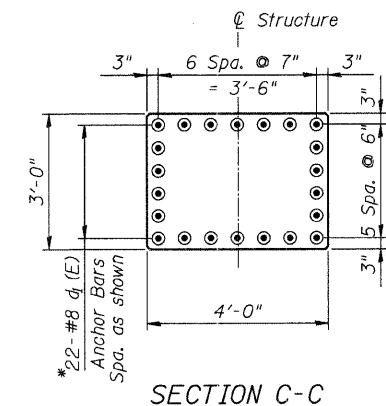
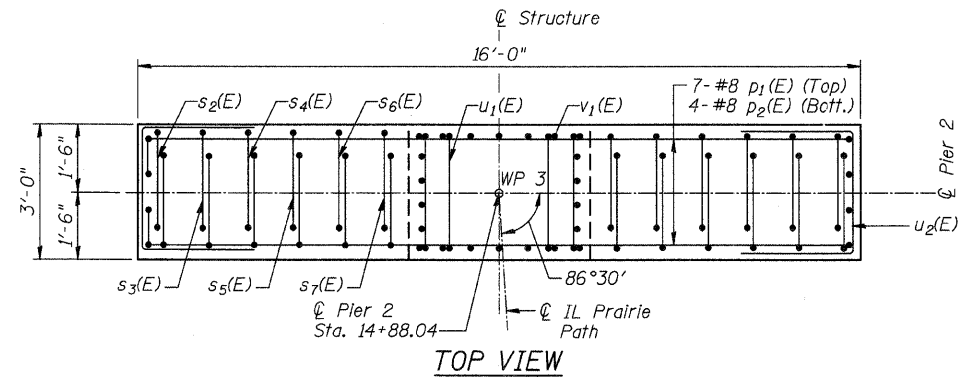
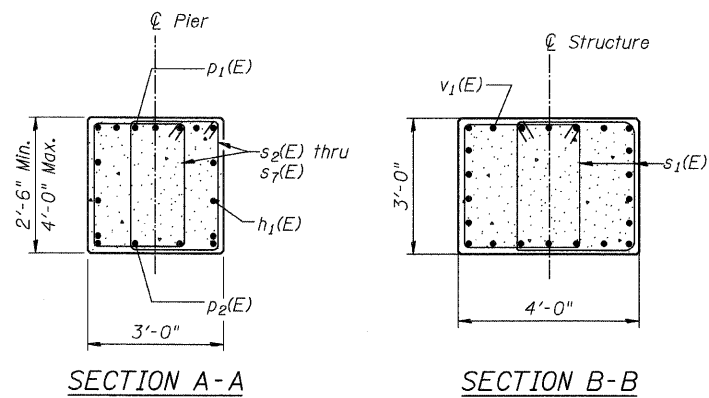
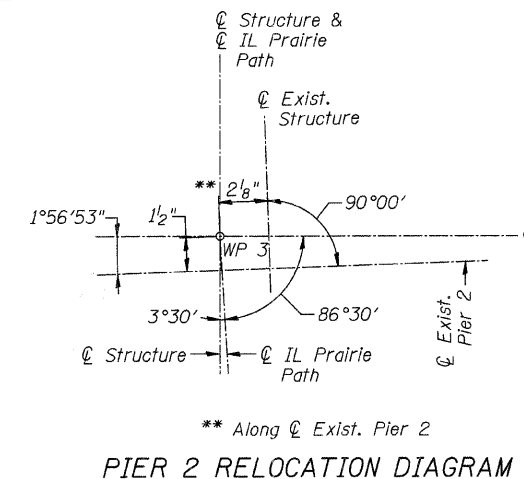
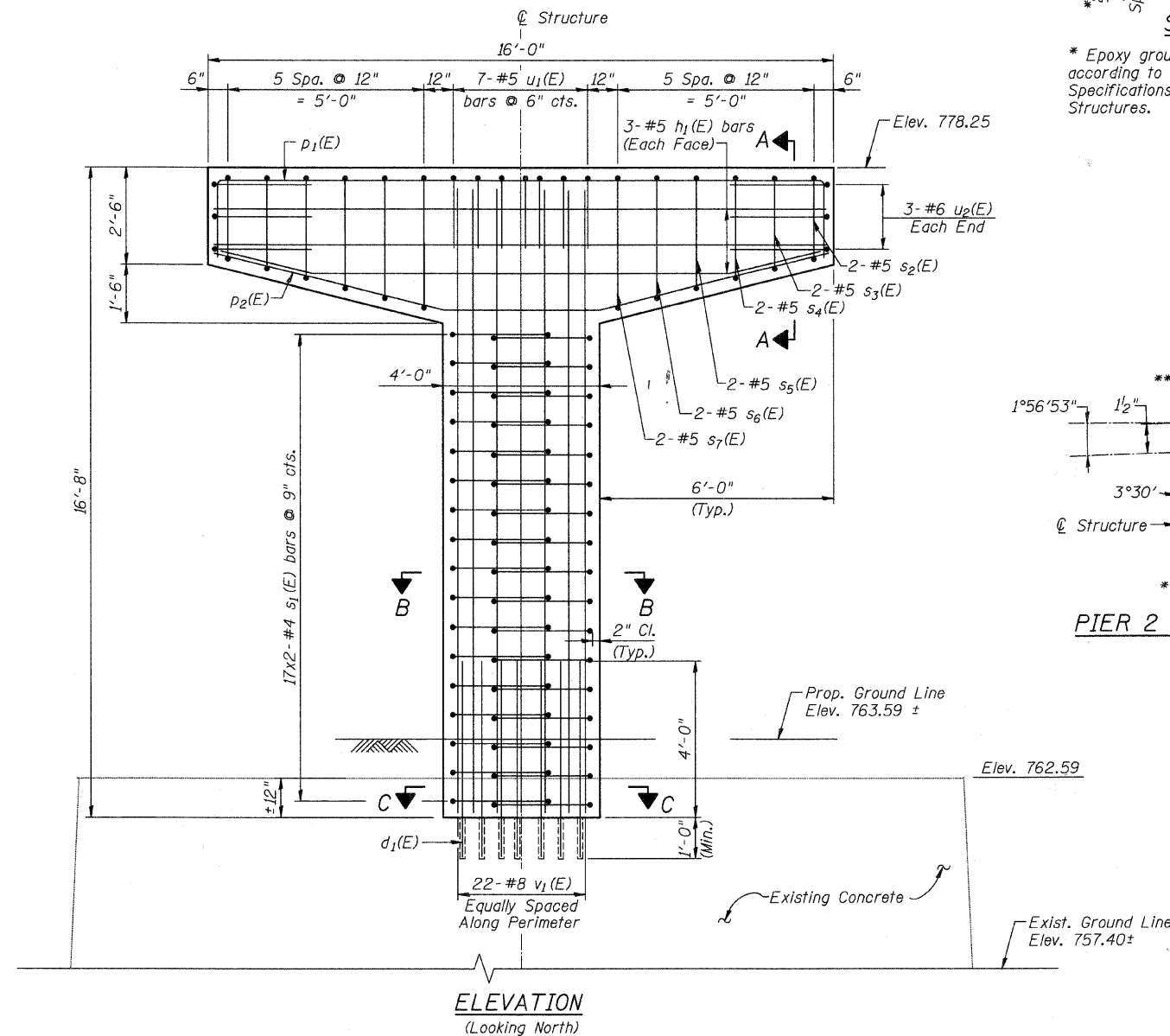
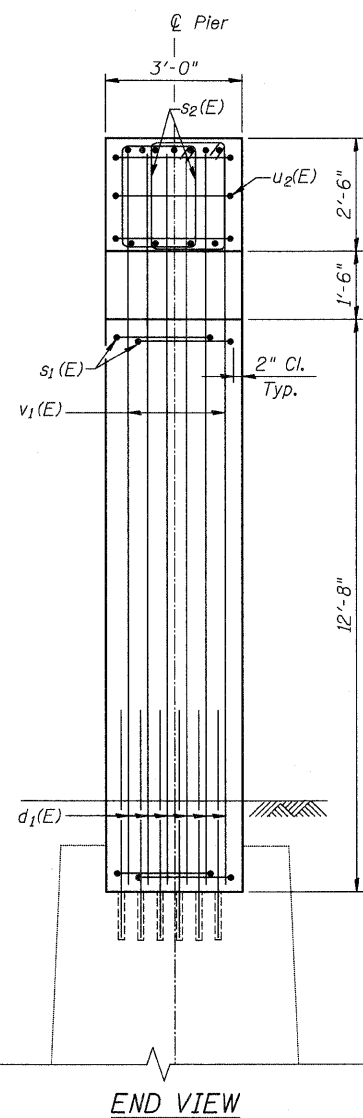


FISCAL YEAR	COUNTY	COUNTY HIGHWAY	TOTAL SHEETS	SHEET NO.
2007	DUPAGE	*	241	161
CONTRACT NUMBER 83908				
SECTION 97-00084-00-BR				
• FAU 3549/ FAU 1432				



\* Epoxy grout in 12" min. drilled  $1\frac{1}{2}"$   $\phi$  holes according to Article 584 of the Standard Specifications. Cost included with Concrete Structures.

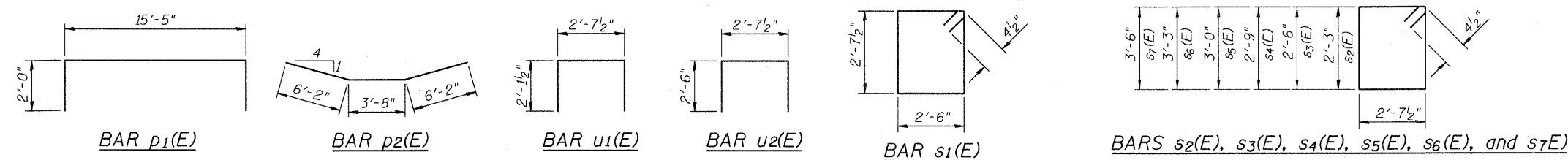


**BILL OF MATERIAL**

Bar	No.	Size	Length	Shape
$d_1(E)$	22	#8	5'-0"	—
$h_1(E)$	6	#5	15'-8"	—
$p_1(E)$	7	#8	19'-5"	□
$p_2(E)$	4	#8	16'-0"	—
$s_1(E)$	34	#4	11'-0"	□
$s_2(E)$	4	#4	10'-6"	□
$s_3(E)$	4	#4	11'-0"	□
$s_4(E)$	4	#4	11'-6"	□
$s_5(E)$	4	#4	12'-0"	□
$s_6(E)$	4	#4	12'-6"	□
$s_7(E)$	4	#4	13'-0"	□
$u_1(E)$	7	#5	6'-10 $\frac{1}{2}"$	□
$u_2(E)$	6	#6	7'-7 $\frac{1}{2}"$	□
$v_1(E)$	22	#8	16'-3"	—
Concrete Structures		Cu. Yd.		11.8
Reinforcement Bars, Epoxy Coated		Pound		2,440
Form Liner		Sq. Ft.		178
Limestone Surface		Sq. Ft.		48.0
Concrete Sealer		Sq. Ft.		48.0

**NOTE:**

For location of Bearing Anchor Bolts, see detail on Sheet IPP-9.



**CITY OF WHEATON**

ILLINOIS PRAIRIE PATH BRIDGE  
 OVER UNION PACIFIC RAILROAD,  
 FRONT STREET AND WESLEY STREET  
 PIER 2 MODIFICATION DETAILS

**HDR**  
 HDR Engineering, Inc.

DRAWN	JM/PES/TV	SHEET NO.
CHECKED	VEVS	<b>IPP-24</b>
APPROVED	BSK	
DATE	06/04/2008	
SCALE	NONE	