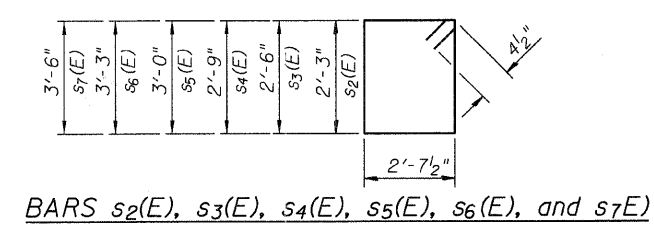
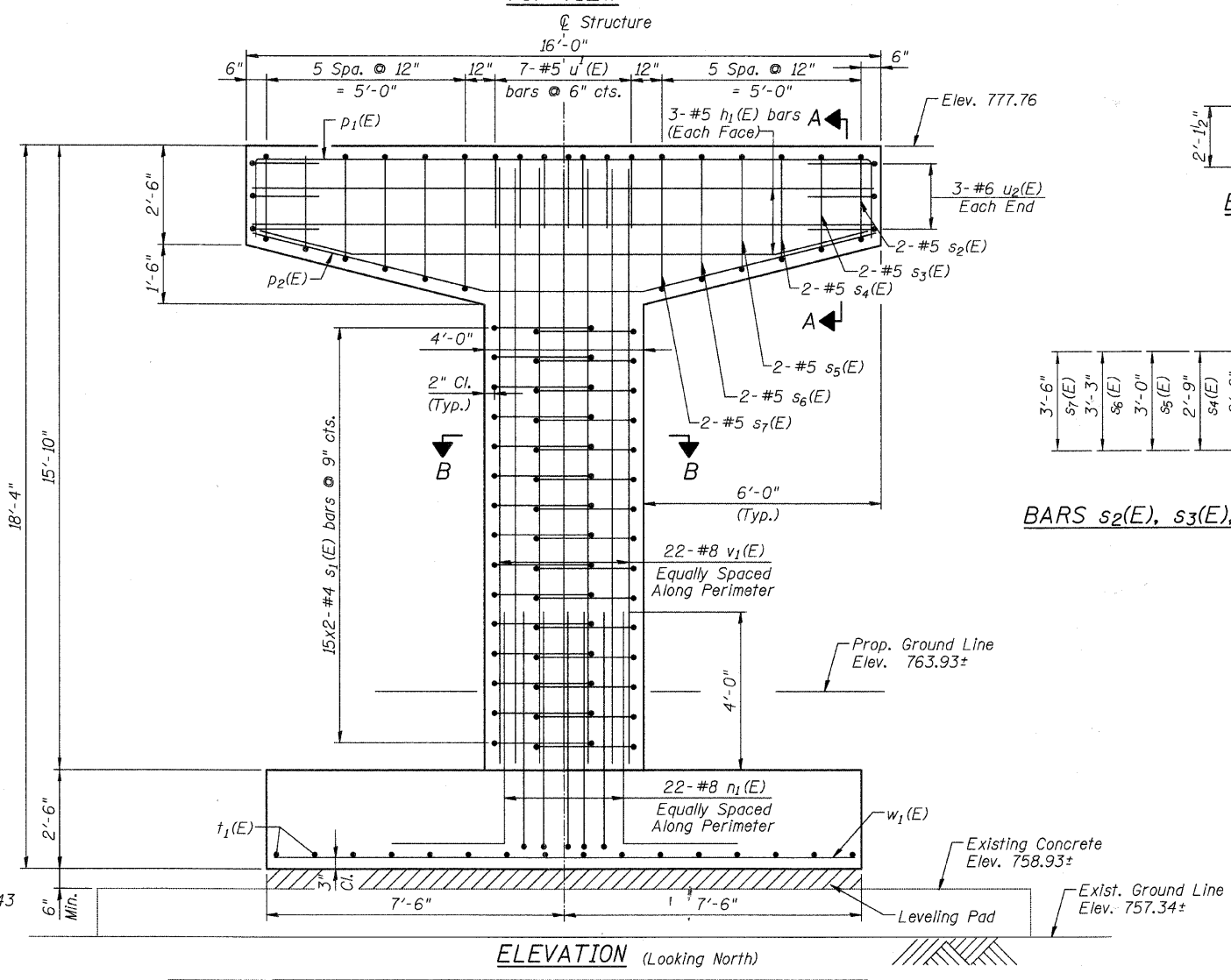
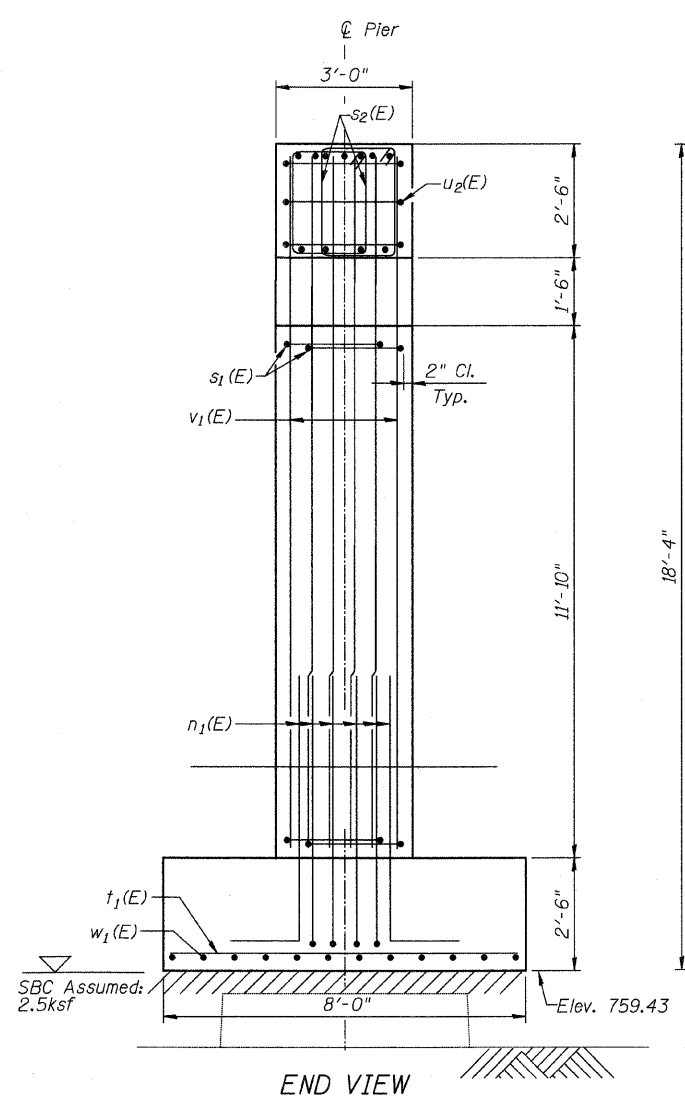
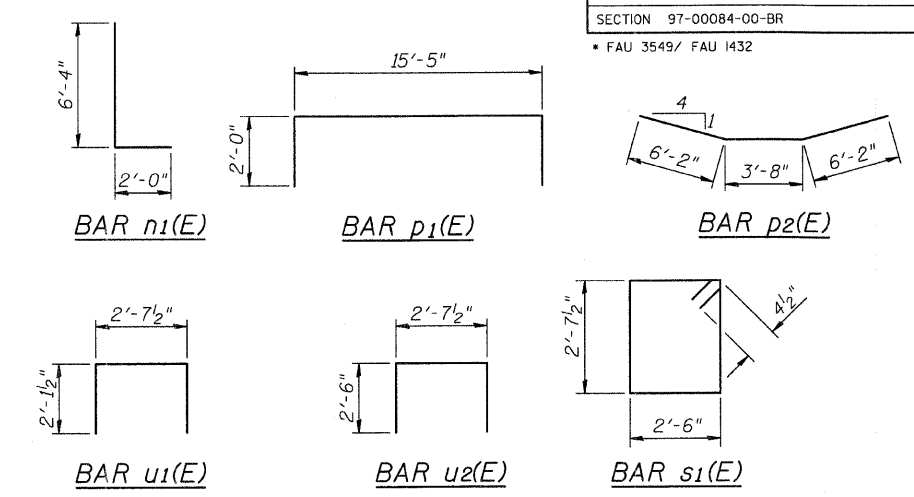
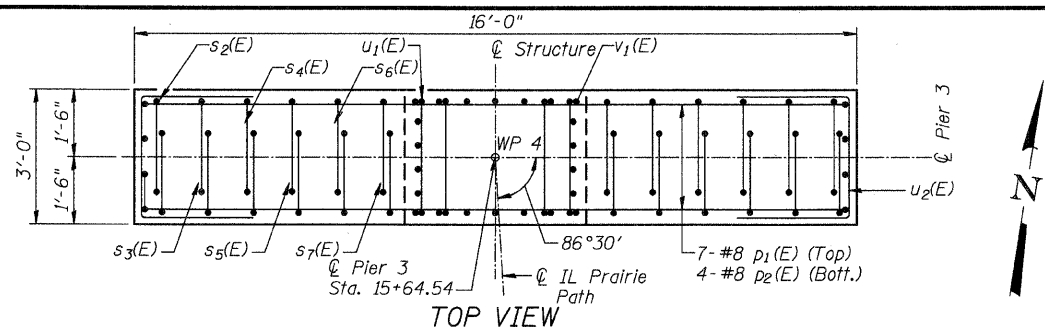
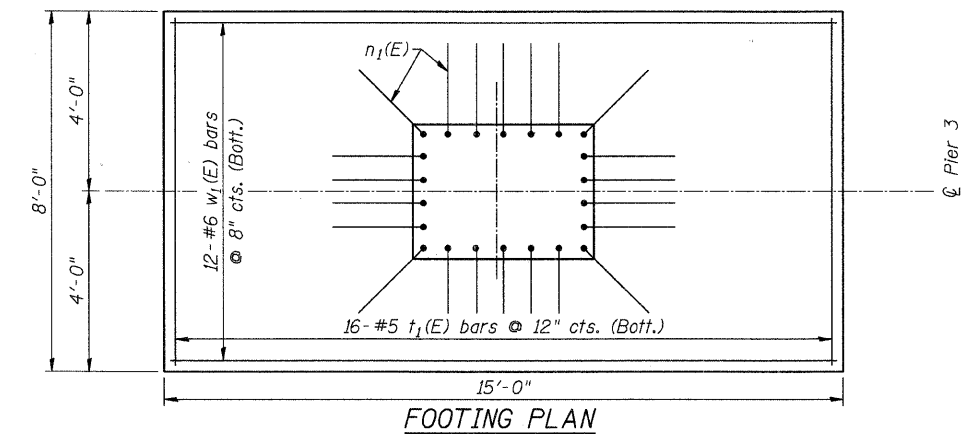
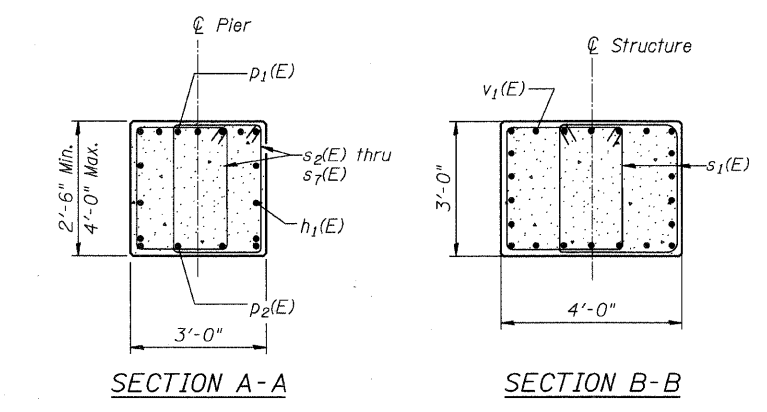


FISCAL YEAR	COUNTY	COUNTY HIGHWAY	TOTAL SHEETS	SHEET NO.
2007	DUPAGE	•	241	163
CONTRACT NUMBER 83908				
SECTION 97-00084-00-BR				
• FAU 3549/ FAU 1432				



BILL OF MATERIAL

Bar	No.	Size	Length	Shape
$h_1(E)$	6	#5	15'-8"	—
$n_1(E)$	22	#8	8'-4"	L
$p_1(E)$	7	#8	19'-5"	—
$p_2(E)$	4	#8	16'-0"	—
$s_1(E)$	30	#4	11'-0"	□
$s_2(E)$	4	#4	10'-6"	□
$s_3(E)$	4	#4	11'-0"	□
$s_4(E)$	4	#4	11'-6"	□
$s_5(E)$	4	#4	12'-0"	□
$s_6(E)$	4	#4	12'-6"	□
$s_7(E)$	4	#4	13'-0"	□
$t_1(E)$	16	#5	7'-6"	—
$u_1(E)$	7	#5	6'-10 1/2"	□
$u_2(E)$	6	#6	7'-7 1/2"	□
$v_1(E)$	22	#8	15'-4"	—
$w_1(E)$	12	#6	14'-6"	—
Concrete Structures		Cu. Yd.	22.5	
Reinforcement Bars, Epoxy Coated		Pound	2,940	
Form Liner		Sq. Ft.	166	
Limestone Surface		Sq. Ft.	48.0	
Concrete Sealer		Sq. Ft.	48.0	



NOTE:

For location of Bearing Anchor Bolts, see detail on Sheet IPP-10.

CITY OF WHEATON
ILLINOIS PRAIRIE PATH BRIDGE
OVER UNION PACIFIC RAILROAD,
FRONT STREET AND WESLEY STREET
PIER 3 DETAILS

DRAWN	JM/PES/TV	SHEET NO.
CHECKED	VEYS	IPP-26
APPROVED	BSK	
DATE	06/04/2008	
SCALE	NONE	

HDR Engineering, Inc.