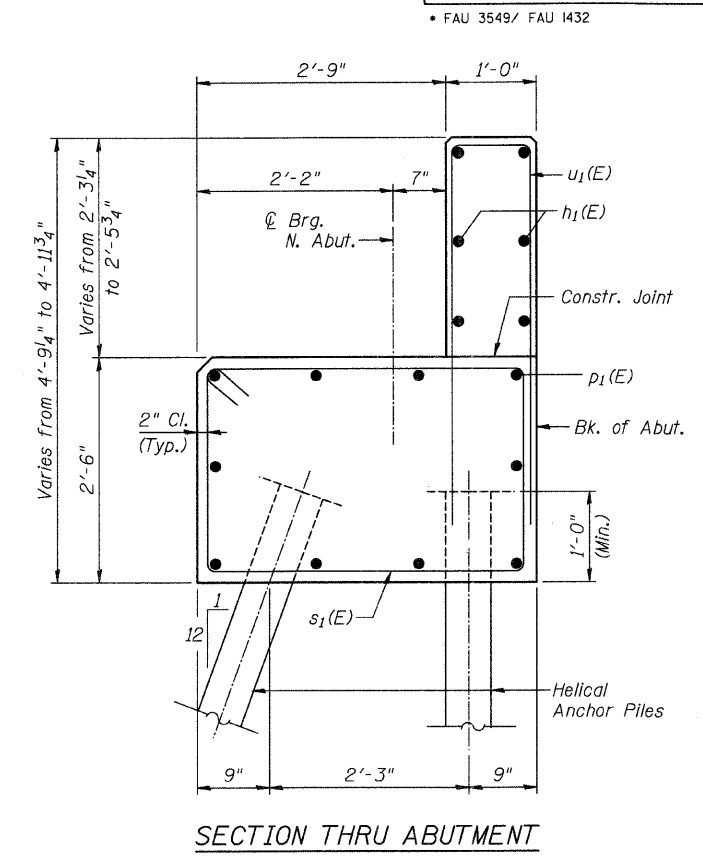
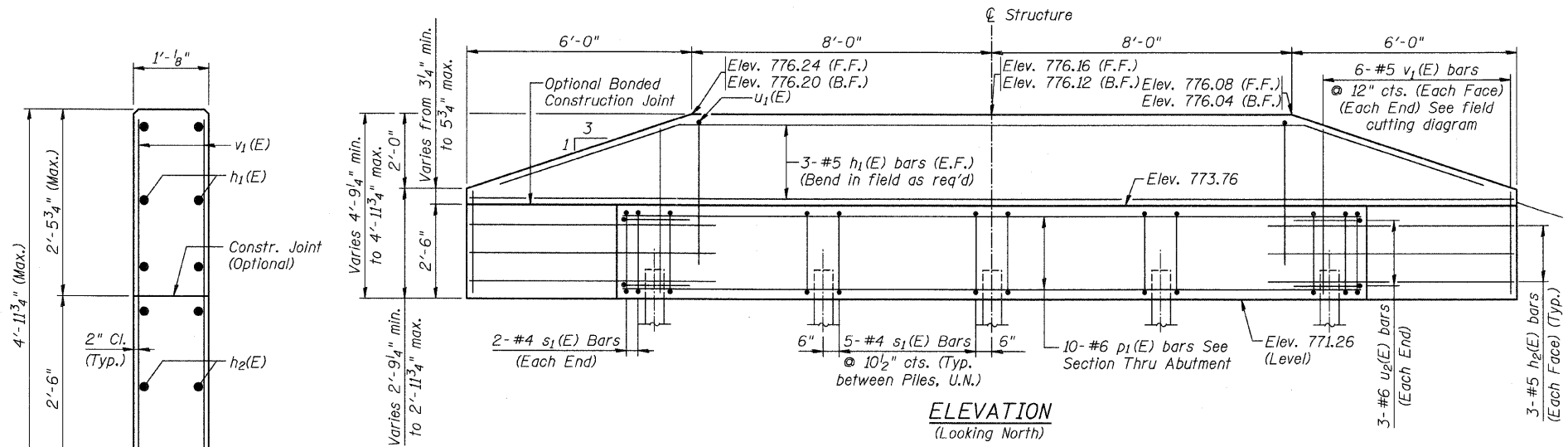
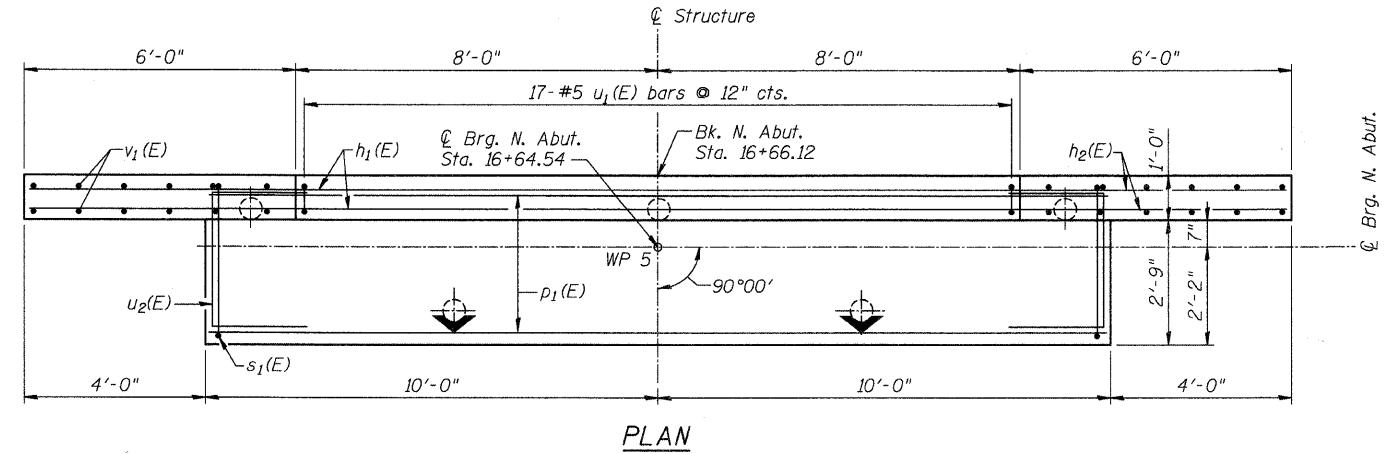


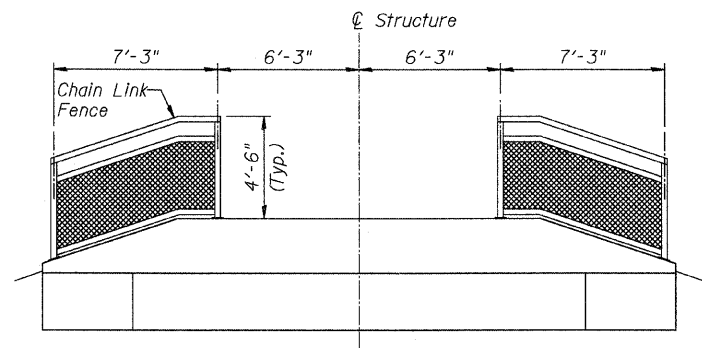
FISCAL YEAR	COUNTY	COUNTY HIGHWAY	TOTAL SHEETS	SHEET NO.
2007	DUPAGE	•	241	164
CONTRACT NUMBER 83908				
SECTION 97-00084-00-BR				
• FAU 3549/ FAU 1432				



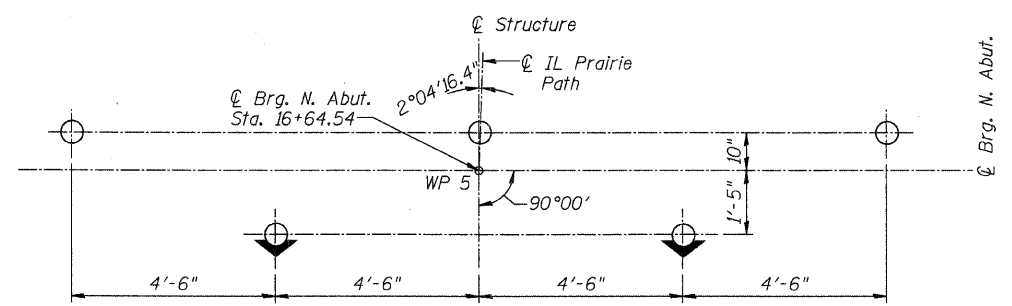
SECTION THRU WINGWALL



PLAN



ABUTMENT ELEVATION (Looking North)



PILE LAYOUT

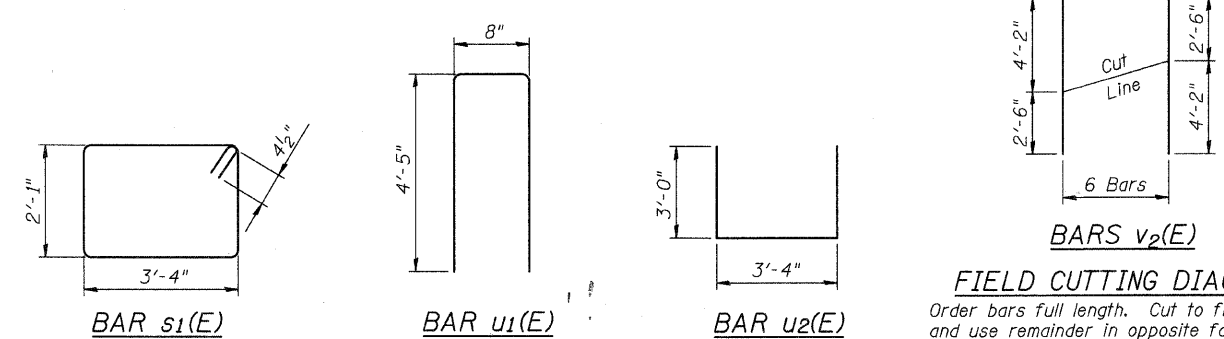
BILL OF MATERIAL

Bar	No.	Size	Length	Shape
h ₁ (E)	6	#5	27'-8"	—
h ₂ (E)	12	#5	6'-6"	—
p ₁ (E)	10	#8	19'-8"	—
s ₁ (E)	24	#4	11'-7"	□
u ₁ (E)	17	#5	9'-6"	□
u ₂ (E)	6	#6	9'-4"	□
v ₁ (E)	12	#5	6'-8"	—
Helical Ground Anchors	Ea.		5	
Concrete Structures	Cu. Yd.		9.8	
Reinforcement Bars, Epoxy Coated	Pound		1,310	
Concrete Sealer	Sq. Ft.		55.0	
Bicycle Railing	Ft.		14.5	

- LEGEND:
- ⊖ - Battered Piles
 - - Plumb Piles

PILE DATA

Type:	Helical Anchors 14-12-10-8
Nominal Required Bearing:	90 Kips
Allowable Resistance Available:	30 Kips
Est. Length:	25 Feet
No Req'd.:	5



FIELD CUTTING DIAGRAMS
Order bars full length. Cut to fit as shown and use remainder in opposite face.

HDR
HDR Engineering, Inc.

CITY OF WHEATON
ILLINOIS PRAIRIE PATH BRIDGE
OVER UNION PACIFIC RAILROAD,
FRONT STREET AND WESLEY STREET
PROPOSED NORTH
ABUTMENT DETAILS

DRAWN	JM/PES/TV	SHEET NO.
CHECKED	VEVS	IPP-27
APPROVED	BSK	
DATE	06/04/2008	
SCALE	NONE	