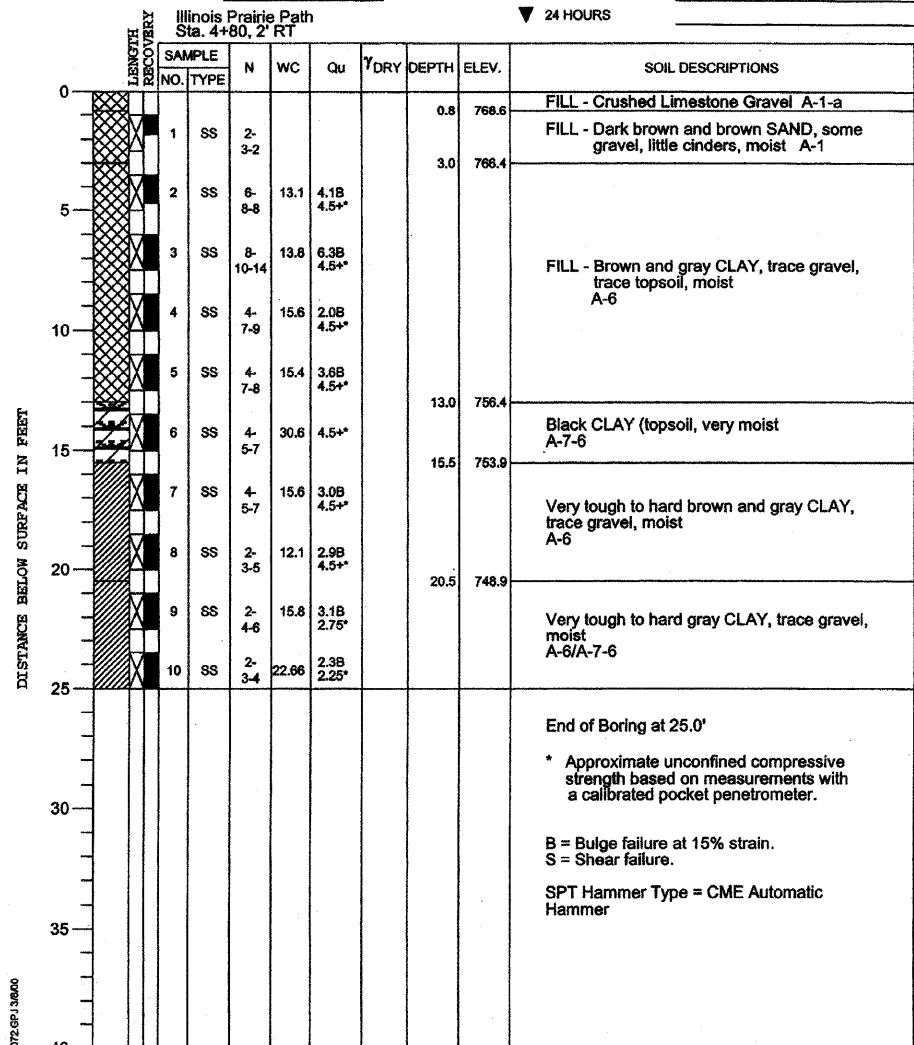


PROJECT **Wesley/Manchester Bridge Replacement, Wheaton, IL**  
 CLIENT **HDR Engineering, Inc., 8420 W. Bryn Mawr Ave., Chicago, Illinois**  
 BORING **21** DATE STARTED **9-13-99** DATE COMPLETED **9-13-99** JOB **L-46,072**



ELEVATIONS WATER TABLE  
 GROUND SURFACE **769.4** WHILE DRILLING **Dry**  
 END OF BORING **744.4** AT END OF BORING **Dry**  
 24 HOURS

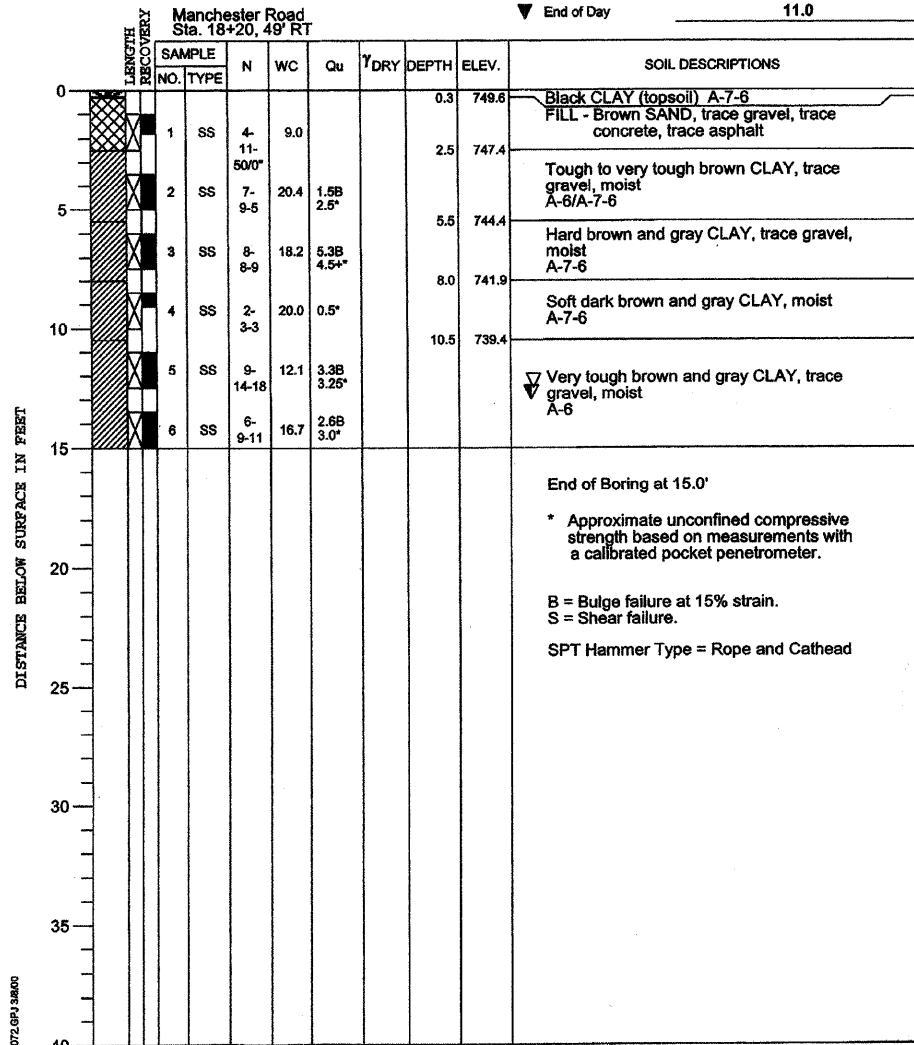


DRILL RIG NO. **243**  
 Division lines between deposits represent approximate boundaries between soil types; in-situ, the transition may be gradual.

PROJECT **Wesley/Manchester Bridge Replacement, Wheaton, IL**  
 CLIENT **HDR Engineering, Inc., 8420 W. Bryn Mawr Ave., Chicago, Illinois**  
 BORING **22** DATE STARTED **9-1-99** DATE COMPLETED **9-1-99** JOB **L-46,072**



ELEVATIONS WATER TABLE  
 GROUND SURFACE **749.9** WHILE DRILLING **13.0'**  
 END OF BORING **734.9** AT END OF BORING **12.5'**  
 End of Day **11.0**

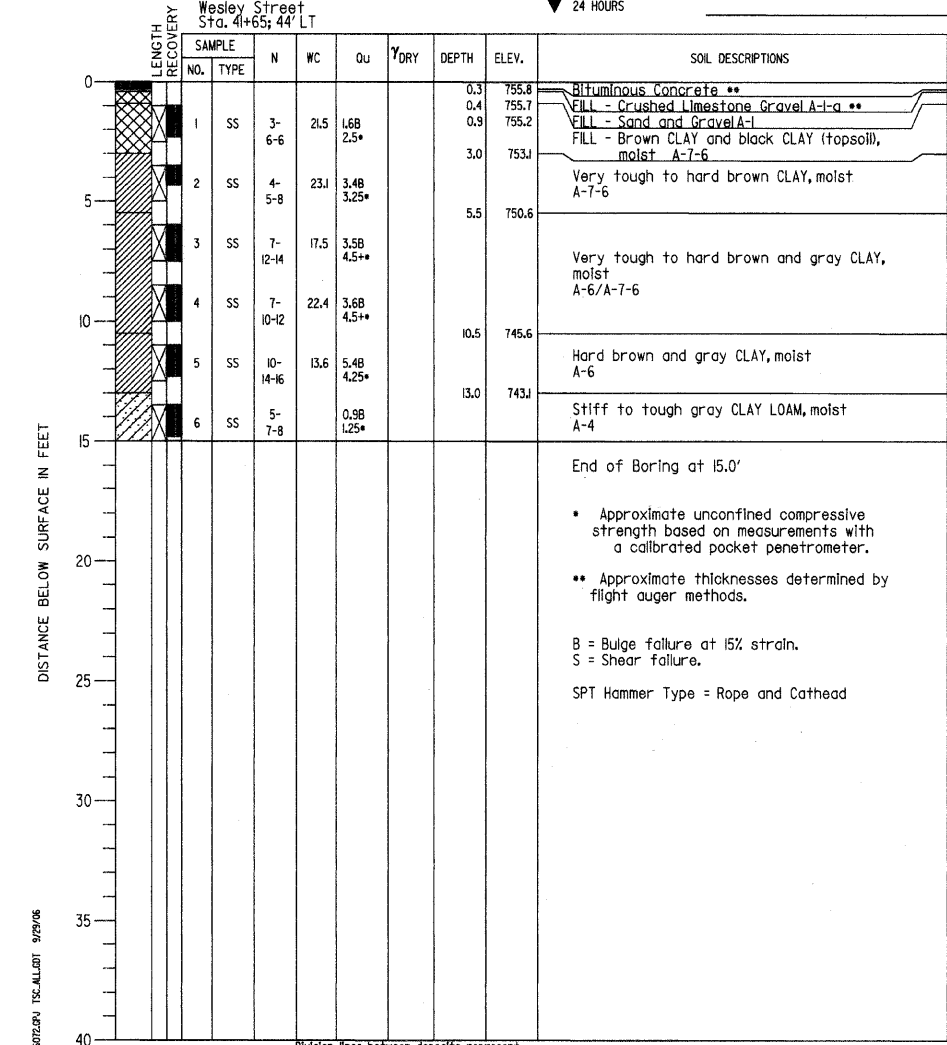


DRILL RIG NO. **217**  
 Division lines between deposits represent approximate boundaries between soil types; in-situ, the transition may be gradual.

PROJECT **Wesley/Manchester Bridge Replacement, Wheaton, IL**  
 CLIENT **HDR Engineering, Inc., 8420 W. Bryn Mawr Ave., Chicago, Illinois**  
 BORING **23** DATE STARTED **9-8-99** DATE COMPLETED **9-8-99** JOB **L-46,072**



ELEVATIONS WATER LEVEL OBSERVATIONS  
 GROUND SURFACE **756.1** WHILE DRILLING **Dry**  
 END OF BORING **741.1** AT END OF BORING **Dry**  
 24 HOURS



DRILL RIG NO. **217**  
 Division lines between deposits represent approximate boundaries between soil types; in-situ, the transition may be gradual.

REVISIONS	
NAME	DATE

**CITY OF WHEATON**  
**MANCHESTER ROAD / WESLEY STREET**  
**OVER UNION PACIFIC RAILROAD**

**SOIL BORING LOG**

VERT. SCALE: 1" = 10'  
 HORIZ. SCALE: 1" = 10'  
 DATE: 6/4/2008

DRAWN BY ML  
 CHECKED BY VS