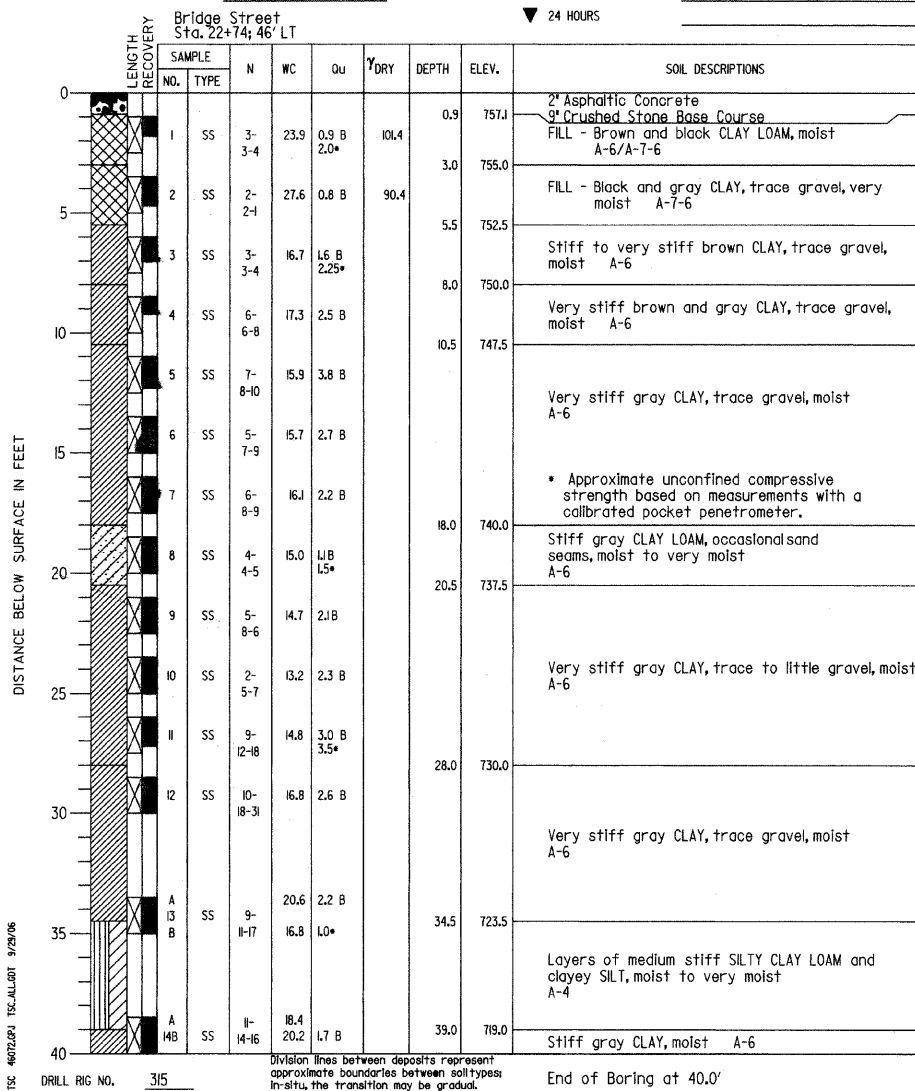


PROJECT Wesley/Manchester Bridge Replacement, Wheaton, IL
 CLIENT HDR Engineering, Inc., 8420 W. Bryn Mawr Ave., Chicago, Illinois
 BORING 24 DATE STARTED 8-18-06 DATE COMPLETED 8-18-06 JOB L-46,072



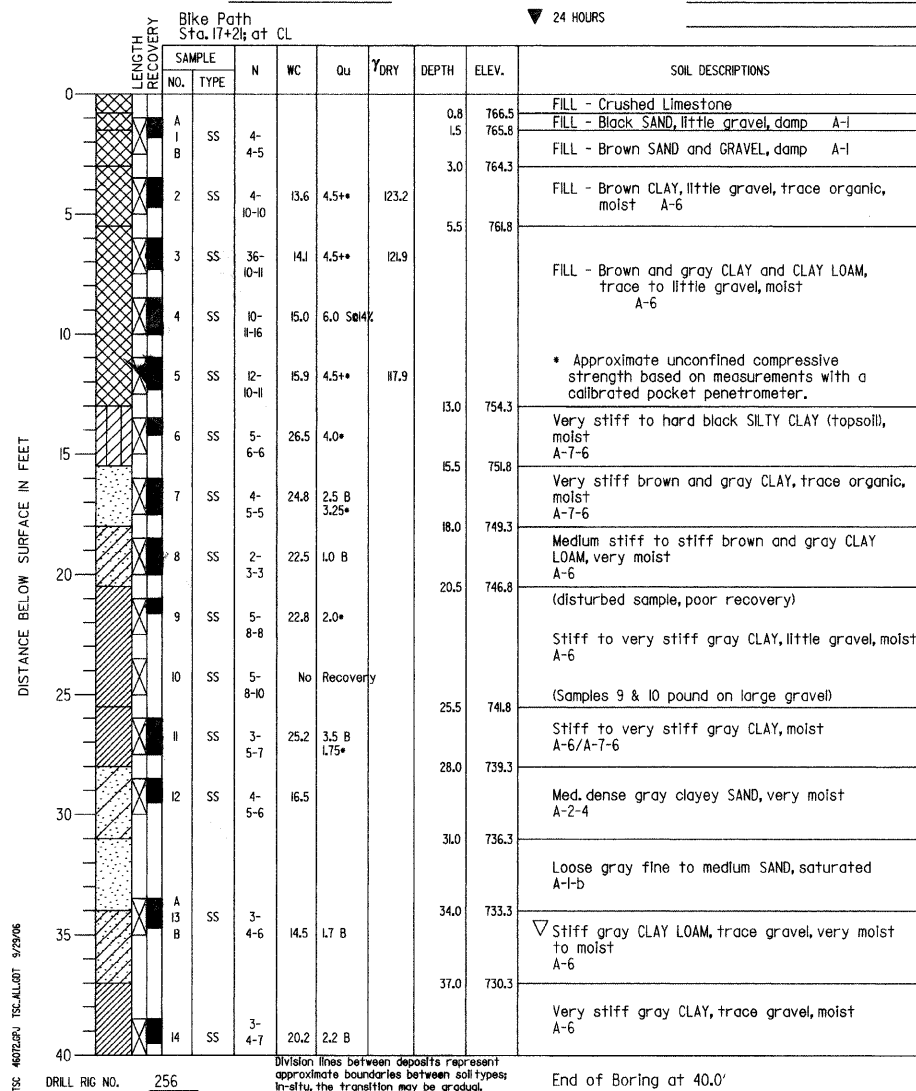
ELEVATIONS
 GROUND SURFACE 758.0
 END OF BORING 718.0
 WATER LEVEL OBSERVATIONS
 WHILE DRILLING Dry
 AT END OF BORING Dry
 24 HOURS



PROJECT Wesley/Manchester Bridge Replacement, Wheaton, IL
 CLIENT HDR Engineering, Inc., 8420 W. Bryn Mawr Ave., Chicago, Illinois
 BORING 25 DATE STARTED 8-23-06 DATE COMPLETED 8-23-06 JOB L-46,072



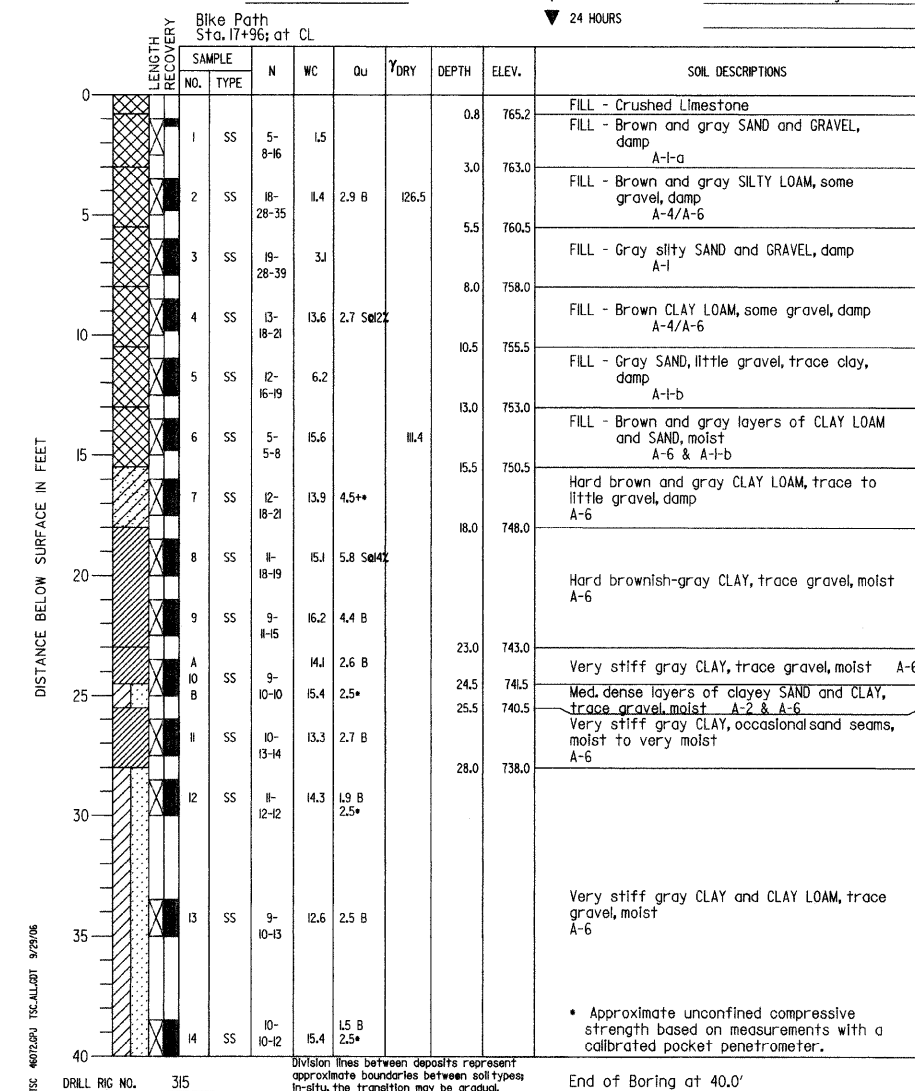
ELEVATIONS
 GROUND SURFACE 767.3
 END OF BORING 727.3
 WATER LEVEL OBSERVATIONS
 WHILE DRILLING 31.0'
 AT END OF BORING 35.0'
 24 HOURS



PROJECT Wesley/Manchester Bridge Replacement, Wheaton, IL
 CLIENT HDR Engineering, Inc., 8420 W. Bryn Mawr Ave., Chicago, Illinois
 BORING 26 DATE STARTED 8-18-06 DATE COMPLETED 8-18-06 JOB L-46,072



ELEVATIONS
 GROUND SURFACE 766.0
 END OF BORING 726.0
 WATER LEVEL OBSERVATIONS
 WHILE DRILLING Dry
 AT END OF BORING Dry
 24 HOURS



REVISIONS	
NAME	DATE

CITY OF WHEATON
 MANCHESTER ROAD / WESLEY STREET
 OVER UNION PACIFIC RAILROAD

SOIL BORING LOG

SCALE: VERT. DRAWN BY ML
 HORIZ. CHECKED BY VS
 DATE 6/4/2008