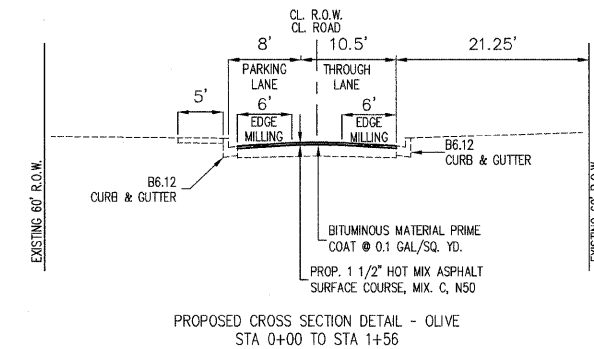
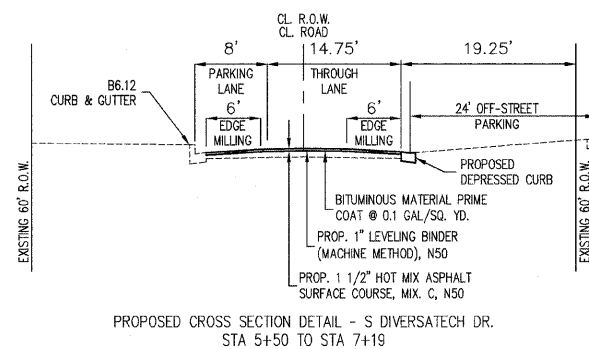
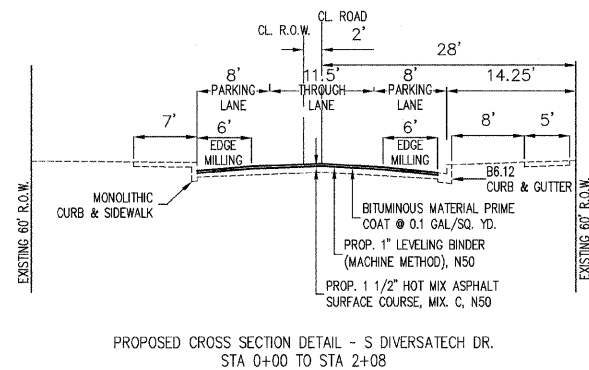
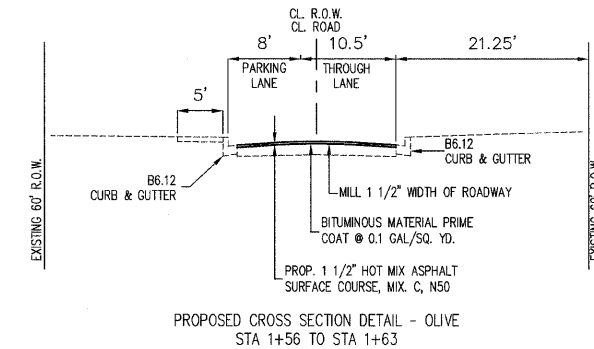
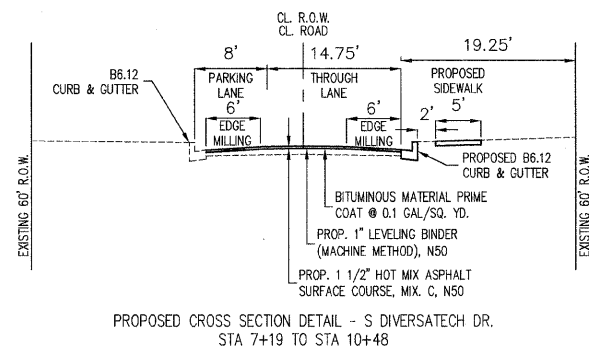
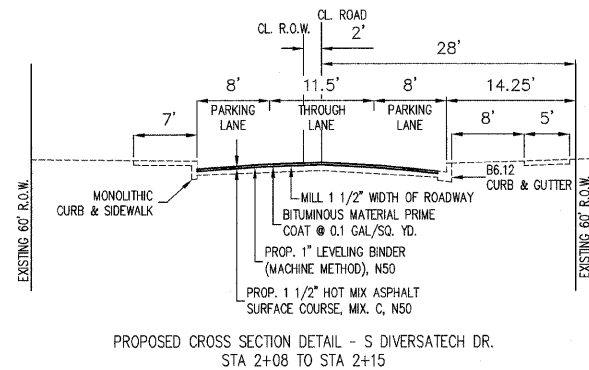
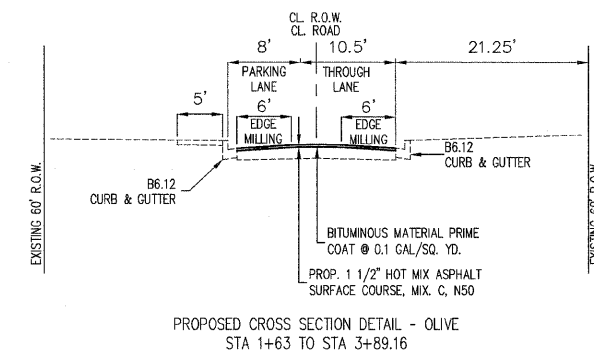
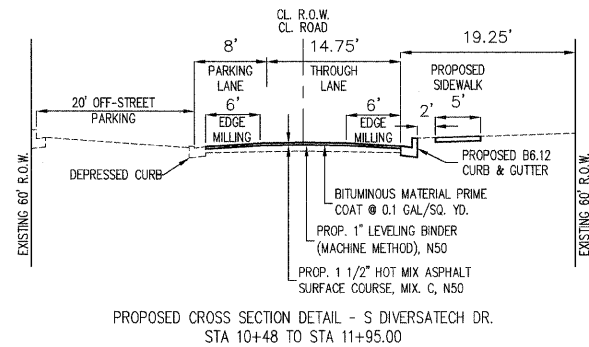
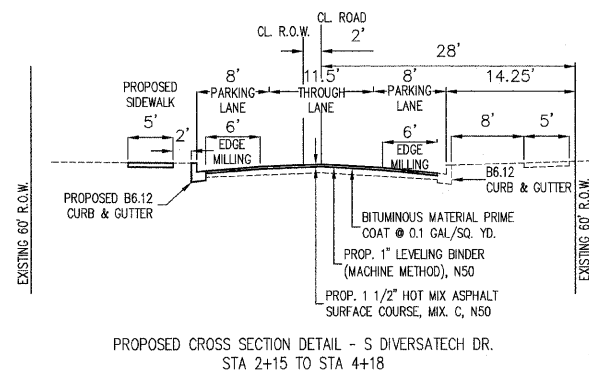
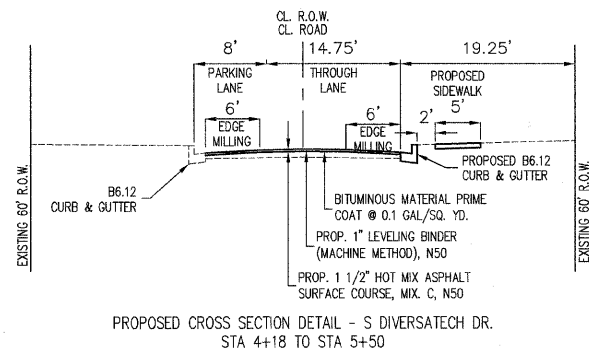


F.A.U. RTE.	SECTION	COUNTY	TOTAL SHEETS	SHEET NO.
VARIOUS	05-07144-00-RS	KANKAKEE	24	16
PROJECT NO.: HPP-4079(002)			CONTRACT NO.: 87358	



M²
M. GINGERICH, GEREAX
ASSOCIATES

240 N. Industrial Drive
Bradley, Illinois 60915
815-939-4921
FAX: 815-939-9810

REVISIONS		
DATE	BY	DESCRIPTION
2/17/2009	JWG	REVISIONS PER REVIEW
3/25/2009	JWG	REVISIONS PER REVIEW
5/11/2009	JWG	REVISIONS PER REVIEW

ILLINOIS DEPARTMENT OF TRANSPORTATION
MANTENO TOWNSHIP
STREET OVERLAY PLAN

PROPOSED CROSS SECTIONS
S. DIVERSATECH DRIVE STA. 0+00 TO STA. 11+95
OLIVE STA. 0+00 TO STA. 3+89.16

SCALE: VERTICAL: 1" = 5'
HORIZONTAL: 1" = 10'

DATE: 12/21/07 DRAWN BY: JWG
CHECKED BY:

X:\PROJECTS\2009-08\HPP-4079\002\OVERLAY PLAN\REVISIONS\16-CROSS SECTIONS OF A.M. LAYOUT.dwg, 12/21/07, 11:22:09 AM, 14.28 MB, JWG