

F.A.S. RTE.	COUNTY	TOTAL SHEETS	SHEET NO.
281	KENDALL	2	1

CONTRACT NO. 87402

STATE OF ILLINOIS
DEPARTMENT OF TRANSPORTATION
DIVISION OF HIGHWAYS

PLANS FOR PROPOSED
FEDERAL AID HIGHWAY
AMERICAN RECOVERY AND REINVESTMENT ACT FUNDING

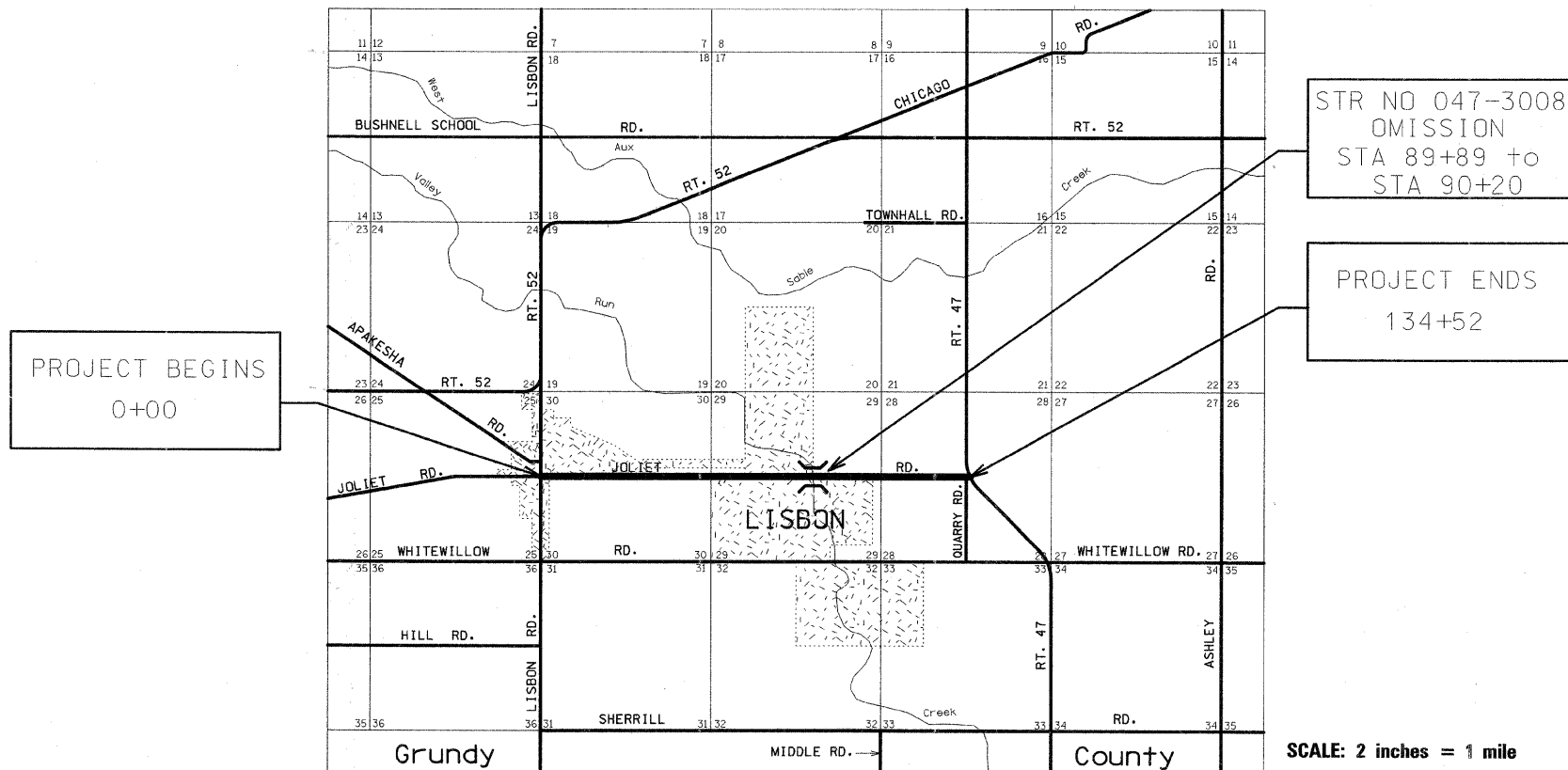
F.A.S. 281 (C.H. 19 - JOLIET ROAD)
SECTION 09-00106-00-RS
PROJECT NO. ARA-0281 (101)
JOB NO. C93-113-09
KENDALL COUNTY

HIGHWAY STANDARDS

- 701011-02 OFF-RD MOVING OPERATIONS 2L, 2W, DAY ONLY
- 701301-03 LANE CLOSURE, 2L, 2W, SHORT TERM OPERATIONS
- 701306-02 LANE CLOSURE, 2L, 2W, SLOW MOVING OPERATIONS, DAY ONLY, FOR SPEEDS > 45 MPH
- 701311-03 LANE CLOSURE, 2L, 2W, MOVING OPERATIONS - DAY ONLY
- 701901-01 TRAFFIC CONTROL DEVICES
- 000001-05 ABBREVIATIONS, SYMBOLS, AND PATTERNS

INDEX OF SHEETS

- 1. COVER SHEET
- 2. SUMMARY OF QUANTITIES
- TYPICAL SECTION
- SIDE ROAD DETAIL
- PAVEMENT DESIGN



DESIGN SPEED: 55 MPH
FUNCTIONAL CLASSIFICATION: MAJOR COLLECTOR
CURRENT ADT: 2186 (YEAR 2009)
DESIGN ADT: 2842 (YEAR: 2019)
PLANS DEVELOPED IN ACCORDANCE WITH
LOCAL AGENCY PAVEMENT PRESERVATION POLICY

J.U.L.I.E.
JOINT UTILITY LOCATION INFORMATION FOR EXCAVATION
1-800-892-0123

CONTRACT NO. 87402

GROSS LENGTH OF IMPROVEMENT = 13,452 FEET = 2.55 MILES
NET LENGTH OF IMPROVEMENT = 13,420 FEET = 2.54 MILES

SCALE: 2 inches = 1 mile

STATE OF ILLINOIS
DEPARTMENT OF TRANSPORTATION
DIVISION OF HIGHWAYS

SUBMITTED MAY 12, 20 09

Francis C. Klass
KENDALL COUNTY ENGINEER

May 22, 20 09

Kenneth L. Long
DISTRICT ENGINEER of LOCAL ROADS and STREETS

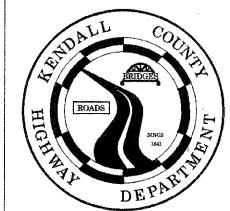
May 22, 20 09

George F. Ryan
DEPUTY DIRECTOR of HIGHWAYS, REGION 2 ENGINEER

Date: MAY 12, 2009

By: *Francis C. Klass*

License Exp: 11/30/09



SUMMARY OF QUANTITIES

FUND CODE 1000

CODE NO.	ITEM	UNIT	QUANTITY
◇ 40600100	BITUMINOUS MATERIALS (PRIME COAT)	GALLON	2,875
40600300	AGGREGATE (PRIME COAT)	TON	36
40600990	TEMPORARY RAMP	SQ YD	11
◇ 40603310	HOT MIX ASPHALT, SURFACE COURSE, MIX "C", N 50	TON	2,525
40800050	INCIDENTAL HOT MIX ASPHALT SURFACING	TON	154
◇ 44000155	HOT MIX ASPHALT SURFACE REMOVAL, 1 1/2"	SQ YD	35,784
48101200	AGGREGATE SHOULDERS, TYPE B	TON	1,500
67100100	MOBILIZATION	L SUM	1
◇ 70100460	TRAFFIC CONTROL PROTECTION, 701306	L SUM	1
70300100	SHORT TERM PAVEMENT MARKING	FOOT	4,026
70301000	WORK ZONE PAVEMENT MARKING REMOVAL	SQ FT	447
* 78005110	EPOXY PAVEMENT MARKING, LINE 4"	FOOT	32,000
* 78005180	EPOXY PAVEMENT MARKING, LINE 24"	FOOT	20
◇ 40600605	LEVEL BINDER (MACHINE METHOD) SPECIAL	TON	3,550

* SPECIALTY ITEMS
◇ SPECIAL PROVISIONS

SIDE ROAD / ENTRANCE SCHEDULE

DESCRIPTION	NUMBER	TONS /EACH	LEV BIND CSE SUPER, N50	HMA, SURF CSE, SUP MIX "C", N50	INC BIT SURFACING
MAILBOX TURNOUTS	10	0.60 (LEVEL BINDER) 0.42 (SURFACE)	6.0	4.2	
FIELD ENTRANCES	10	0.55 (LEVEL BINDER) 0.40 (SURFACE)	5.5	4.0	
PRIVATE ENTRANCES	13	10.0 (SURFACE)			130
SIDE ROADS	2	12.0 (SURFACE)			24
		TOTALS	* 11.5	* 8.2	154

* PAID FOR AS PART OF MAINLINE QUANTITIES

STRUCTURAL DESIGN INFORMATION

JOLIET ROAD
SECTION 09-00106-00-RS

ROAD CLASSIFICATION: COLLECTOR, CLASS II
STRUCTURAL DESIGN YEAR: 2013 (8-YR DESIGN PERIOD)

LISBON RD. TO VULCAN QUARRY ENTRANCE

2013 ADT: 554 PV (97%) = 537 SU (2%) = 11 MU (1%) = 6
TRAFFIC FACTOR = 0.012 IBV = 3 STRUCTURAL NUMBER = 2.00

PAVEMENT STRUCTURE MATERIALS (Lisbon Rd. to Vulcan Quarry entrance)

Aggregate Base Course (Existing)	(9.00")x(0.09)	=	0.81
Bituminous Surface Treatment, A-3 (Existing)	(0.75")x(0.15)	=	0.1125
Bituminous Mix Class I (Existing)	(3.00")x(0.23)	=	0.69
Bituminous Surface Treatment (Existing After Grinding)	(1.00")x(0.16)	=	0.16
Hot Mix Asphalt, Level Binder & Surface Course (Proposed)	(3.00")x(0.40)	=	1.20
			2.9725

VULCAN QUARRY ENTRANCE TO RT. 47

2013 ADT: 2462 PV (75%) = 1847 SU (13%) = 320 MU (12%) = 295
TRAFFIC FACTOR = 0.142 IBV = 3 STRUCTURAL NUMBER = 3.08

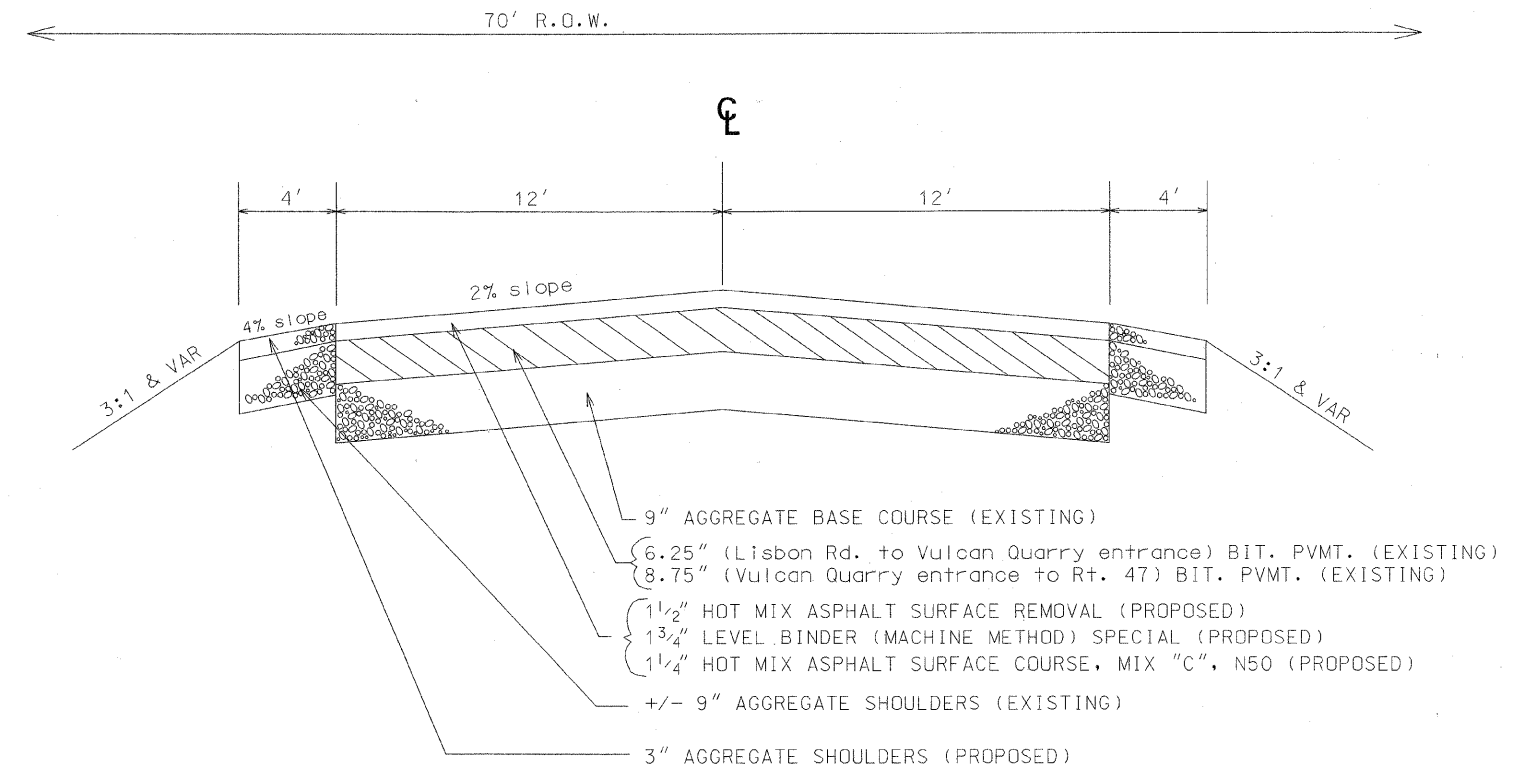
PAVEMENT STRUCTURE MATERIALS (Vulcan Quarry entrance to Ill. Rt. 47)

Aggregate Base Course (Existing)	(9.00")x(0.09)	=	0.81
Bituminous Surface Treatment, A-3 (Existing)	(0.75")x(0.15)	=	0.1125
Bituminous Mix Class I (Existing)	(3.00")x(0.23)	=	0.69
Bituminous Surface Treatment (Existing)	(1.00")x(0.16)	=	0.16
Bituminous Mix Class I (Existing after grind)	(2.50")x(0.30)	=	0.75
Hot Mix Asphalt, Level Binder & Surface Course (Proposed)	(3.00")x(0.40)	=	1.20
			3.7225

TYPICAL SECTION JOLIET ROAD STA 0+00 to STA 134+52

F.A.S. RTE.	COUNTY	TOTAL SHEETS	SHEET NO.
281	KENDALL	2	2

SECTION 09-00106-00-RS
JOB C93-113-09
CONTRACT 87402
PROJECT ARA-0281 (101)



SIDE ROAD DETAIL

