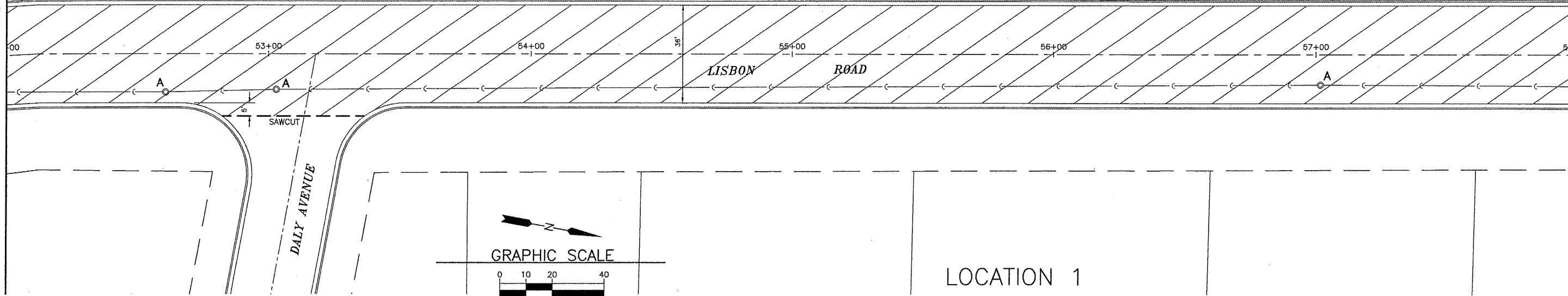


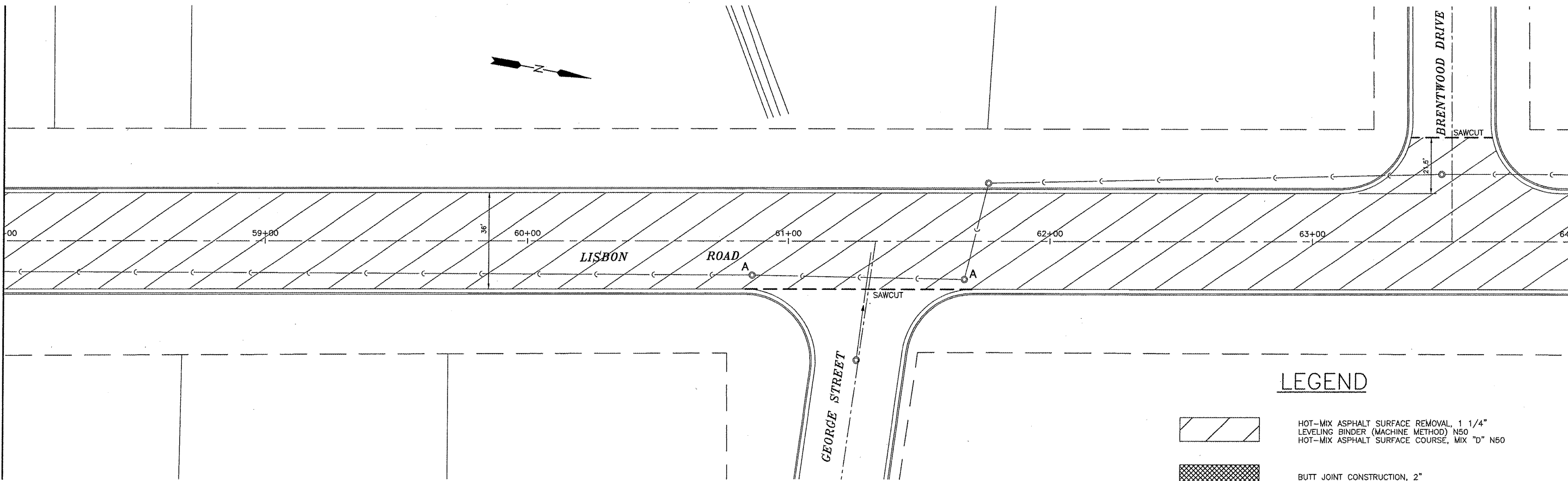
MATCHLINE STA. 52+00 SEE SHEET 4

MATCHLINE STA. 58+00 SEE SHEET 5 BELOW

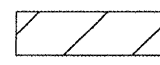



MATCHLINE STA. 58+00 SEE SHEET 5 ABOVE

MATCHLINE STA. 64+00 SEE SHEET 6



LEGEND

-  HOT-MIX ASPHALT SURFACE REMOVAL, 1 1/4" LEVELING BINDER (MACHINE METHOD) N50 HOT-MIX ASPHALT SURFACE COURSE, MIX "D" N50
-  BUTT JOINT CONSTRUCTION, 2"

DRAWN BY: MAB
 CHECKED BY: RJS
 DATE: 4/1/09

REVISIONS	
DATE	BY
5/12/09	MAB



PERU MORRIS
 ILLINOIS

MORRIS ARRA PROJECT 2009
 CITY OF MORRIS, GRUNDY COUNTY, ILLINOIS

LISBON ROAD
 (FAU 5966)

SCALE: 1" = 20'
 FILE NO.: 12883

SHEET 5
 OF 12