

**INDEX OF SHEETS**

- 1.) COVER SHEET, SUMMARY OF QUANTITIES
- 2.) PLAN SHEET
- 3.) PLAN SHEET, TYPICAL SECTION

**STANDARDS**

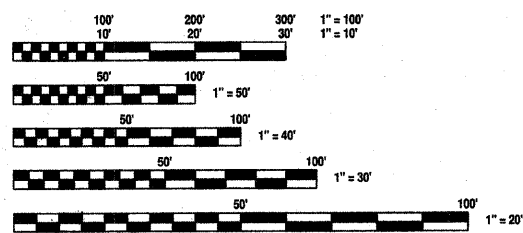
TRAFFIC CONTROL AND PROTECTION, STANDARD 701306  
 STANDARD SYMBOLS, ABBREVIATIONS AND PATTERNS, STANDARD 000001-05  
 HMA SHLD. STRIPS/SHLDS. WITH RESURFACING OR WIDENING AND RESURFACING PROJECTS, STANDARD 482011-03  
 LANE CLOSURE, 2L, 2W, SLOW MOVING OPERATIONS DAY ONLY, FOR SPEEDS > 45 MPH, STANDARD 701306-02  
 TRAFFIC CONTROL DEVICES, STANDARD 701901-01  
 TYPICAL PAVEMENT MARKINGS, STANDARD 780001-02

**SUMMARY OF QUANTITIES**

1 000

PAY ITEM NO.	PAY ITEM	QTY.	UNIT
40600982	HOT MIX ASPHALT SURFACE REMOVAL-BUTT JOINT	317	SY
78300200	RAISED REFLECTIVE PAVEMENT MARKER REMOVAL	80	EA
70300100	SHORT-TERM PAVEMENT MARKING	250	FT
78300105	PAVEMENT MARKING REMOVAL	250	FT
67100100	MOBILIZATION	1	L SUM
40600100	BITUMINOUS MATERIALS (PRIME COAT)	1000	GAL
40600300	AGGREGATE (PRIME COAT)	10	TON
40600625	LEVELING BINDER (MACHINE METHOD), N50	600	TON
40603310	HOT-MIX ASPHALT SURFACE COURSE, MIX "C", N50	1000	TON
48203100	HOT-MIX ASPHALT SHOULDER	200	TON
48102100	AGGREGATE WEDGE SHOULDER, TYPE B	250	TON
* 78000200	THERMOPLASTIC PAVEMENT MARKING-LINE 4"	9000	FT
* 78000500	THERMOPLASTIC PAVEMENT MARKING-LINE 8"	800	FT
* 78000600	THERMOPLASTIC PAVEMENT MARKING-LINE 12"	500	FT
* 78000650	THERMOPLASTIC PAVEMENT MARKING-LINE 24"	100	FT
* 78000100	THERMOPLASTIC PAVEMENT MARK-LETTERS & SYMBOLS	90	SF
70100460	TRAFFIC CONTROL AND PROTECTION, STANDARD 701306	1	L SUM

\* SPECIALTY ITEMS



FULL SIZE PLANS HAVE BEEN PREPARED USING STANDARD ENGINEERING SCALES. REDUCED SIZED PLANS WILL NOT CONFORM TO STANDARD SCALES. IN MAKING MEASUREMENTS ON REDUCED PLANS, THE ABOVE SCALES MAY BE USED.

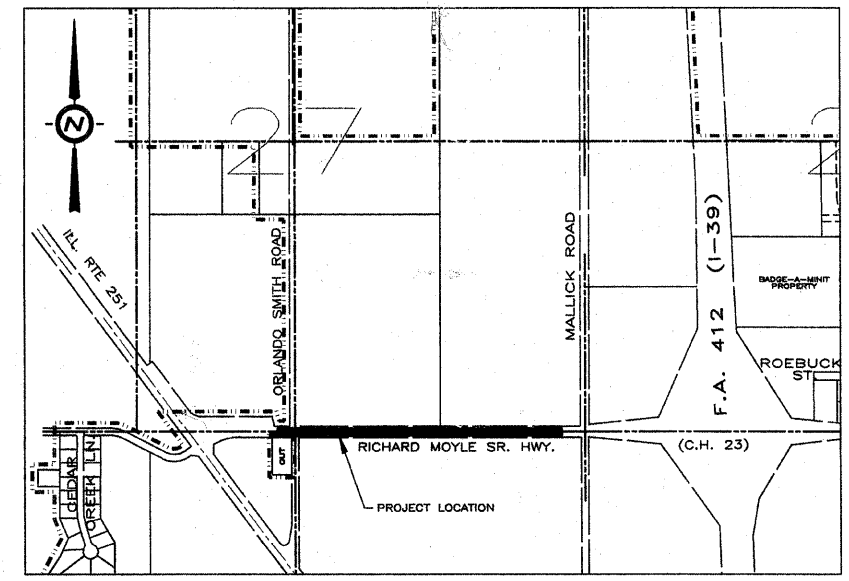
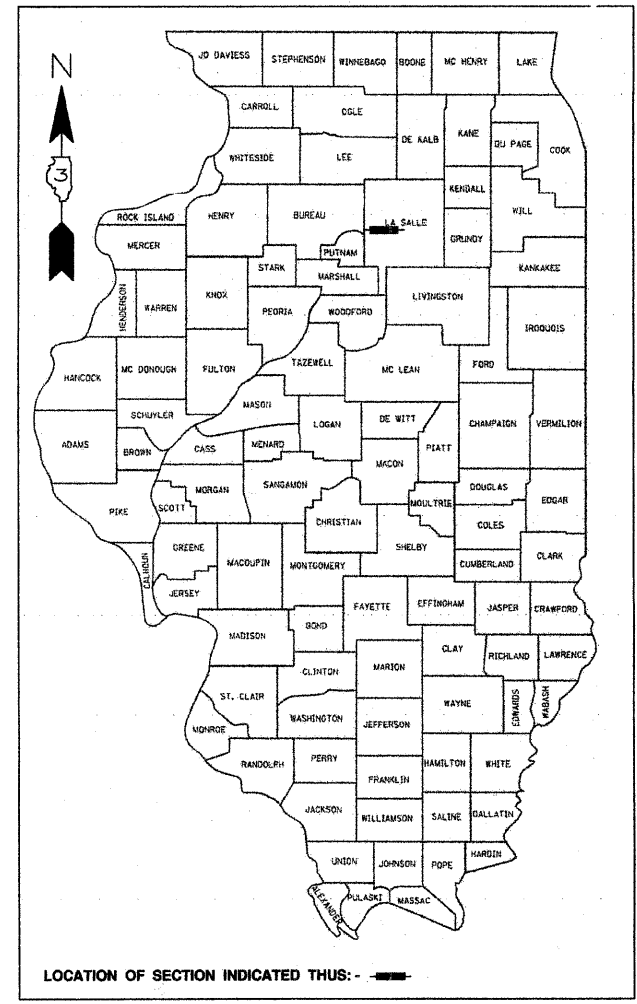
J.U.L.I.E.  
 JOINT UTILITY LOCATION INFORMATION FOR EXCAVATION  
 1-800-892-0123  
 OR 811

CONTRACT NO. 87426

STATE OF ILLINOIS  
 DEPARTMENT OF TRANSPORTATION  
 DIVISION OF HIGHWAYS

**PROPOSED  
 HIGHWAY PLANS**  
**AMERICAN RECOVERY AND REINVESTMENT ACT**

F.A.U. ROUTE 6093  
 SECTION 09-00041-00-RS  
 PROJECT ARA-5036(025)  
 LA SALLE COUNTY  
 C-93-155-09  
 CITY OF OGLESBY



LOCATION MAP  
 NOT TO SCALE

GROSS LENGTH = 2522 FT. = 0.48 MILE  
 NET LENGTH = 2522 FT. = 0.48 MILE

**FUNCTIONAL CLASSIFICATION**  
 URBAN COLLECTOR  
 ADT = 6100  
 LAPP DESIGN POLICY: CATEGORICAL EXCLUSION

STATE OF ILLINOIS  
 DEPARTMENT OF TRANSPORTATION  
 DIVISION OF HIGHWAYS

APPROVED 5/15 2009  
*Anthony Davis*  
 LOCAL AGENCY REPRESENTATIVE

PASSED 5-26 2009  
*Richard P. Brown*  
 DISTRICT 3 ENGINEER OF LOCAL ROADS AND STREETS

RELEASING FOR BID BASED ON LIMITED REVIEW 5-26 2009  
*George E. Ryan*  
 DEPUTY DIRECTOR OF HIGHWAYS / REGION 2 ENGINEER



*Richard P. Brown*  
 11/30/2009  
 5/14/2009

**PRINTED BY THE AUTHORITY  
 OF THE STATE OF ILLINOIS**