

CONTRACT NO. 87427			
F.A.U. SECTION	COUNTY	TOTAL SHEETS	SHEET NO.
6141 09-00092-00-PV	LASALLE	36	1
STA. 1+85 TO STA. 39+80			
FED. ROAD DIST. NO. 3 ILLINOIS ARRA PROJECT			

STATE OF ILLINOIS
DEPARTMENT OF TRANSPORTATION
DIVISION OF HIGHWAYS
PLANS FOR PROPOSED
LOCAL AGENCY IMPROVEMENT
ARRA PROJECT

CITY OF STREATOR
LaSALLE COUNTY
PROJECT NO. ARA-5066(014)
JOB C-93-154-09
CONTRACT # 87427
OAKLEY AVENUE (FAU 6141)
(FROM IL RTE 23 TO EASTWOOD AVENUE)
SECTION 09-00092-00-PV

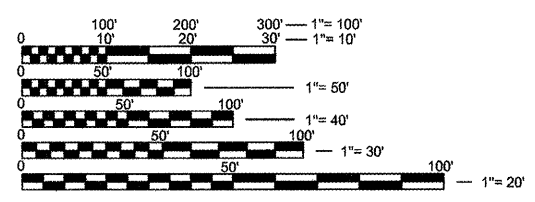
SHEET NO.	INDEX TO SHEETS
1	COVER SHEET & INDEX OF SHEETS
2	GENERAL INFORMATION, NOTES
3	TYPICAL SECTIONS
4	DETAILS
5	SCHEDULE OF QUANTITIES
6	TRAFFIC CONTROL PLAN (OVERALL)
7	TRAFFIC CONTROL PLAN - STAGE 1
8	TRAFFIC CONTROL PLAN - STAGE 2
9	DETOUR PLAN - STAGE 2
10	TRAFFIC CONTROL PLAN - STAGE 3
11	TRAFFIC CONTROL PLAN - STAGE 4
12	TRAFFIC CONTROL PLAN - STAGE 5
13-19	PLAN AND PROFILE
20	PAVEMENT MARKING PLAN
21-36	CROSS SECTIONS

STATE STANDARD DETAILS

000001-05	STANDARD SYMBOLS, ABBREVIATIONS AND PATTERNS
420001-07	PAVEMENT JOINTS
420701-02	PAVEMENT FABRIC
424001-05	CURB RAMPS FOR SIDEWALK
442101-07	CLASS B PATCHES
602401-02	MANHOLE, TY-A
602601-02	PRECAST REINF. CONC. FLAT TOP SLAB
602701-02	MANHOLE STEPS
604001-03	TYPE 1 FRAME AND LIDS
606001-04	CONCRETE CURB TY-B & COMBINATION CURB & GUTTER
701501-05	URBAN LANE CLOSURE 2L, 2W, UNDIVIDED
701901-01	TRAFFIC CONTROL DEVICES
780001-02	TYPICAL PAVEMENT MARKINGS

BENCHMARKS:

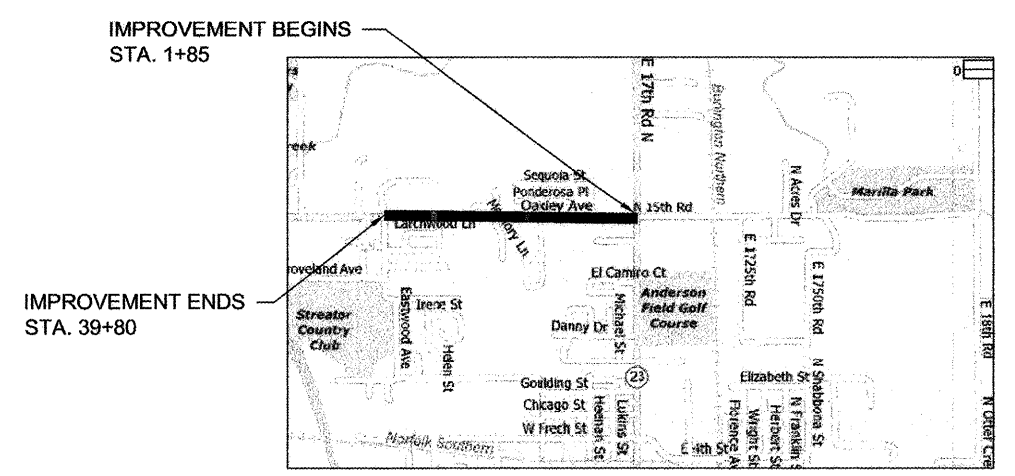
- BM # 227 - SPIKE IN P.P., N. SIDE OF OAKLEY AV., @ EASTWOOD AVE. (ELEV=627.07)
- BM # 230 - SPIKE IN P.P., N.W. COR OF OAKLEY AVE. & PONDEROSA (ELEV=630.70)



FULL SIZE PLANS HAVE BEEN PREPARED USING STANDARD ENGINEERING SCALES. REDUCED SIZED PLANS WILL NOT CONFORM TO STANDARD SCALES. IN MAKING MEASUREMENTS ON REDUCED PLANS, THE ABOVE SCALES MAY BE USED.

J.U.L.I.E.
 JOINT UTILITY LOCATION INFORMATION FOR EXCAVATION
 1-800-892-0123
 OR 811

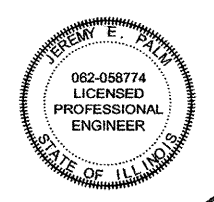
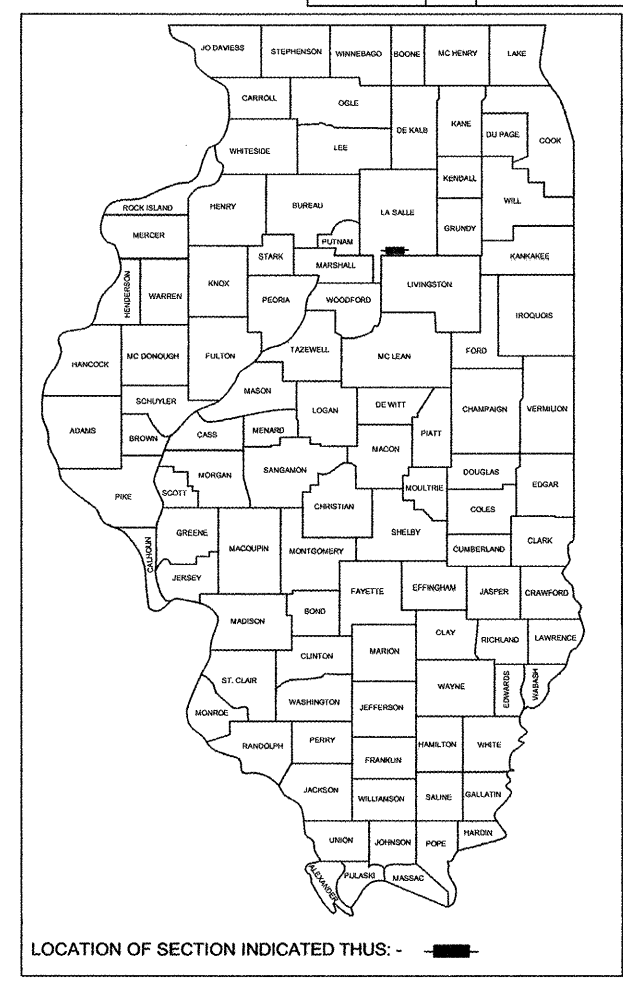
CONTRACT NO. 87427



LOCATION MAP - CITY OF STREATOR
 TOTAL LENGTH OF PROJECT = 3,895 FEET = 0.74 MILES
 NET LENGTH OF PROJECT = 3,895 FEET = 0.74 MILES

ROADWAY DATA

ROUTE CLASSIFICATION:	MINOR ARTERIAL
FACILITY CLASS:	II (2 LANE)
CURRENT YEAR:	2009
DESIGN YEAR:	2029
DESIGN REQUIREMENTS:	3R



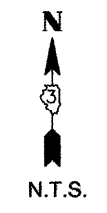
SIGNATURE: *Jeremy E. Palm*
 DATE: 5/21/09
 EXPIRATION: 11/30/2009

STATE OF ILLINOIS
 DEPARTMENT OF TRANSPORTATION
 DIVISION OF HIGHWAYS

APPROVED: 5/21/09 *Ray Bennett*
 LOCAL AGENCY REPRESENTATIVE

PASSED: May 26, 2009 *Howard K. Long*
 DISTRICT 3 ENGINEER OF LOCAL ROADS AND STREETS

RELEASING: May 26, 2009
 FOR BID
 BASED ON LIMITED REVIEW
 DEPUTY DIRECTOR OF HIGHWAYS
 REGION TWO ENGINEER



PRINTED BY THE AUTHORITY
OF THE STATE OF ILLINOIS

FINAL