
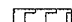



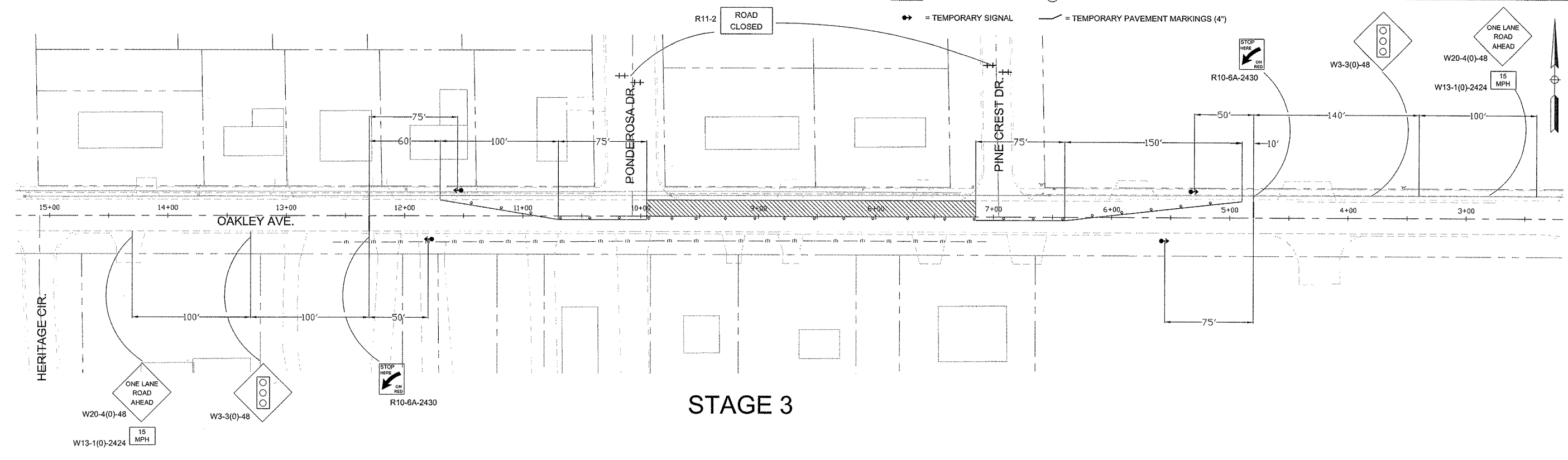


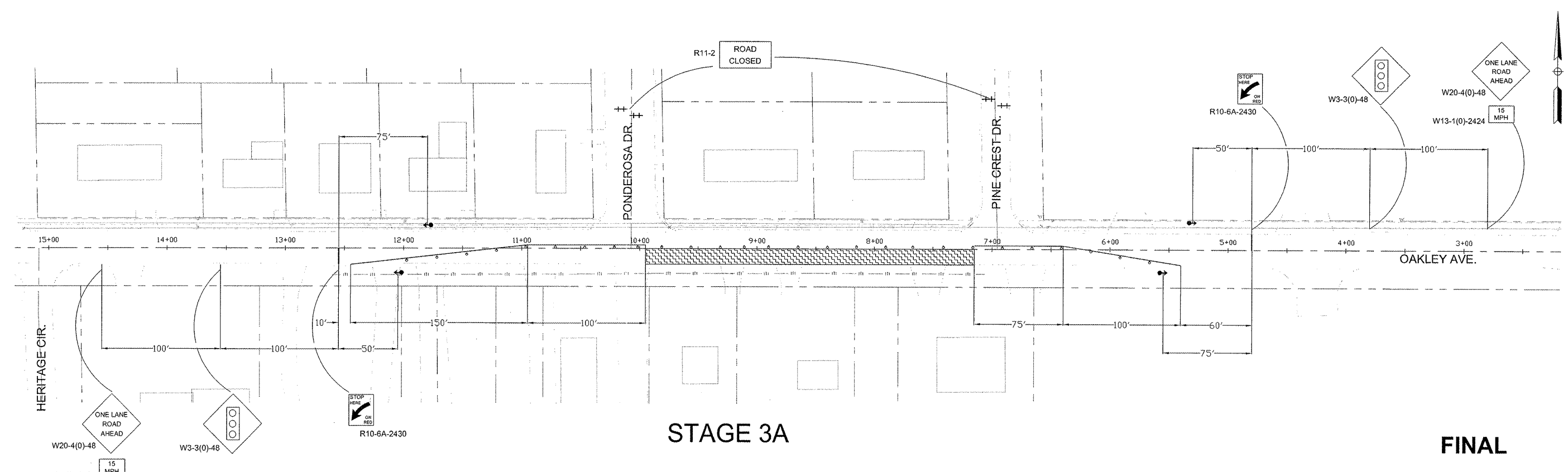
F.A.U. RT.	SECTION	COUNTY	TOTAL SHEETS	SHEET NO.
6141	09-00092-00-PV	LASALLE	36	10
STA. 1+85		TO STA. 39+80		
FED. ROAD DIST. NO. 3 ILLINOIS		ARRA PROJECT		

**LEGEND**

-  = STAGE 3 CONSTRUCTION
-  = TYPE III. BARRICADE R11-4 WITH FLASHING LIGHTS AND SIGNS
-  = TEMPORARY SIGNAL
-  = DRUM WITH STEADY BURN LIGHT
-  = TEMPORARY PAVEMENT MARKINGS (4")



**STAGE 3**



**STAGE 3A**

**FINAL**

SCALE: 1" = 40'

DESIGNED - JEP	REVISED -
DRAWN - JCL	REVISED -
CHECKED - JEP	REVISED -
DATE - 4/10/09	REVISED -

STATE OF ILLINOIS  
DEPARTMENT OF TRANSPORTATION

**TRAFFIC CONTROL PLAN - STAGE 3**