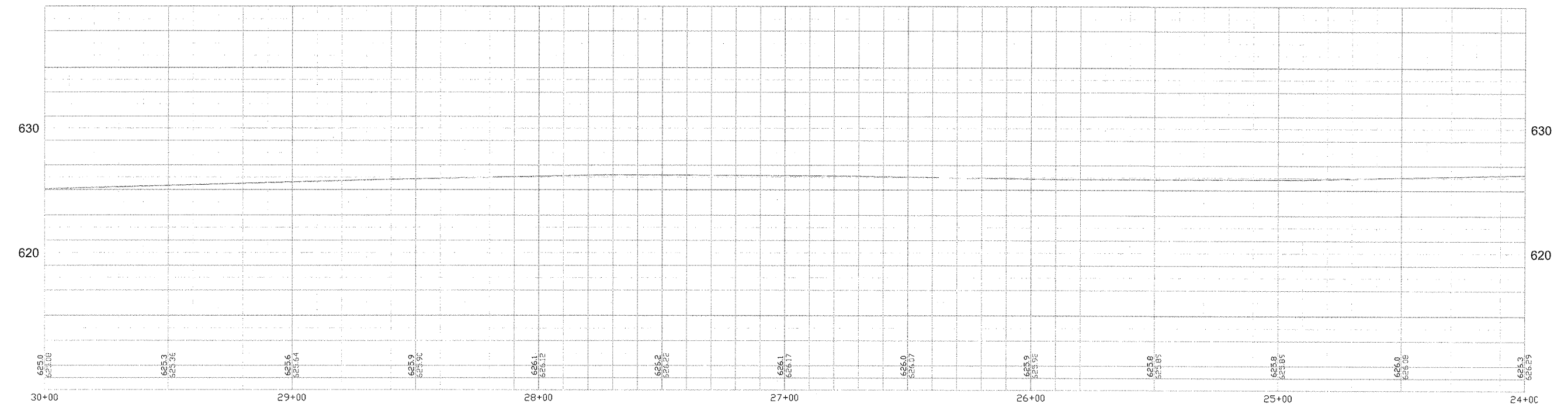
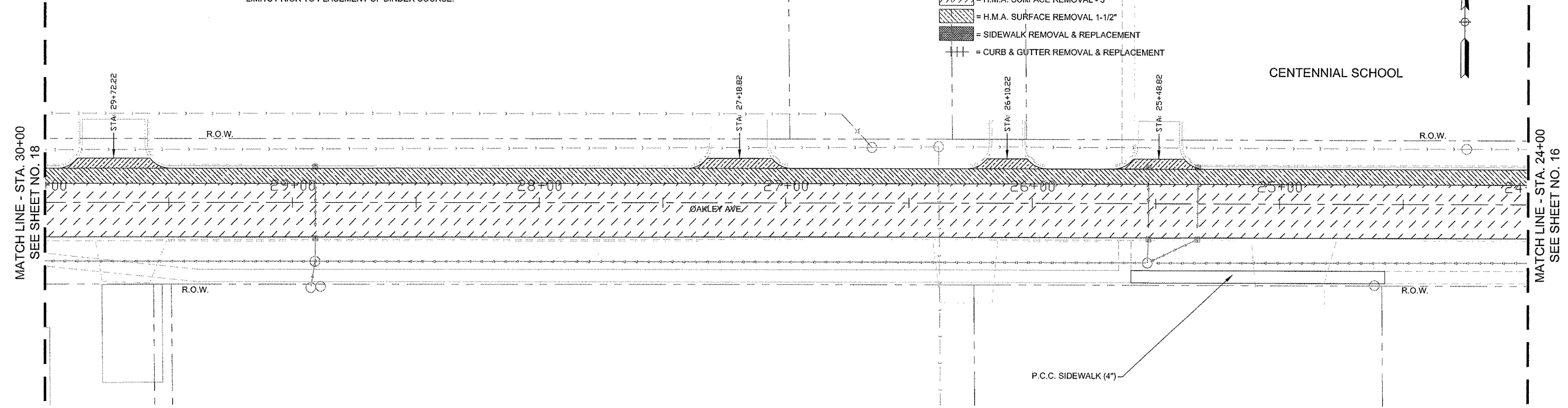


| F.A.U. RTE. | SECTION | COUNTY | TOTAL SHEETS | SHEET NO. |
|-----------------------|----------------|---------------|--------------|--------------|
| 6141 | 09-00092-00-PV | LASALLE | 36 | 17 |
| STA. 1+85 | | TO STA. 39+80 | | |
| FED. ROAD DIST. NO. 3 | | ILLINOIS | | ARRA PROJECT |

LEGEND

- [Hatched pattern] = CONCRETE PAVEMENT PATCHING AREA (HOT PATCH)
- [Cross-hatched pattern] = P.C.C. PAVEMENT REMOVAL / 7" JOINTED P.C.C. PAVEMENT
- [Diagonal hatched pattern] = H.M.A. PATCHING AREA
- [Stippled pattern] = BIT. SURFACE REMOVAL (BUTT JOINT)
- [Horizontal hatched pattern] = P.C.C. SURFACE REMOVAL (BUTT JOINT)
- [Vertical hatched pattern] = H.M.A. SURFACE REMOVAL - 3"
- [Dotted pattern] = H.M.A. SURFACE REMOVAL 1-1/2"
- [Solid black] = SIDEWALK REMOVAL & REPLACEMENT
- [Dashed line] = CURB & GUTTER REMOVAL & REPLACEMENT

NOTE: AREA REFLECTIVE CRACK CONTROL TO BE APPLIED TO ALL H.M.A. PAVING LIMITS PRIOR TO PLACEMENT OF BINDER COURSE.



FINAL

SCALE: 1" = 20'

| | |
|----------------|-----------|
| DESIGNED - JEP | REVISED - |
| DRAWN - JCL | REVISED - |
| CHECKED - JEP | REVISED - |
| DATE - 4/10/09 | REVISED - |

STATE OF ILLINOIS
DEPARTMENT OF TRANSPORTATION

PLAN AND PROFILE (24+00 - 30+00)