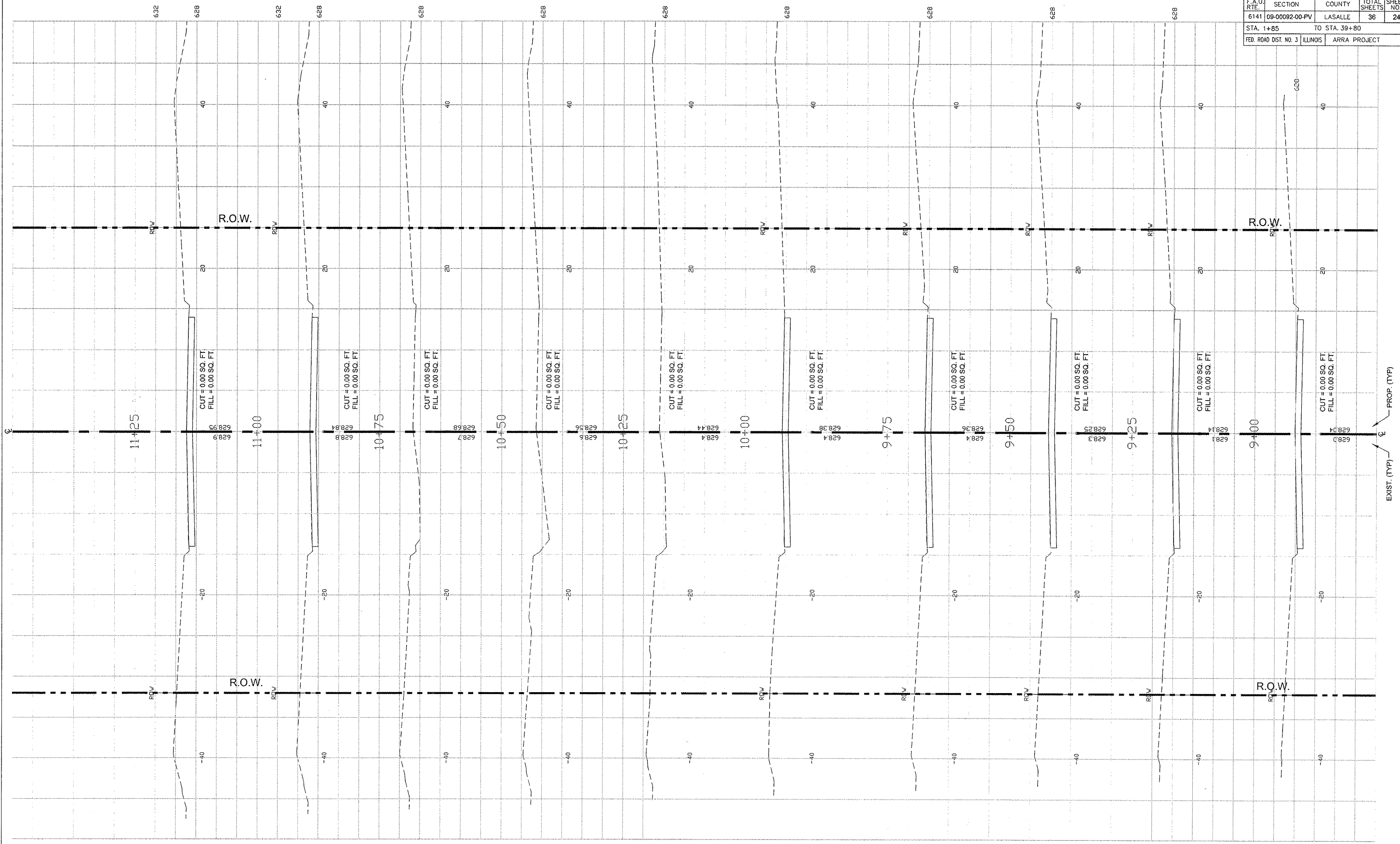


F.A.U. RTE.		SECTION		COUNTY		TOTAL SHEETS		CONTRACT NO. 87427	
6141		09-00092-00-PV		LASALLE		36		24	
STA. 1+85				TO STA. 39+80					
FED. ROAD DIST. NO. 3 ILLINOIS				ARRA PROJECT					



EXIST. (TYP)
PROP. (TYP)

FINAL

SCALE: 1" = 20'

DESIGNED - JEP	REVISED -
DRAWN - JCL	REVISED -
CHECKED - JEP	REVISED -
DATE - 4/10/08	REVISED -

STATE OF ILLINOIS
DEPARTMENT OF TRANSPORTATION

CROSS SECTIONS - STA. 9+00 TO 11+25