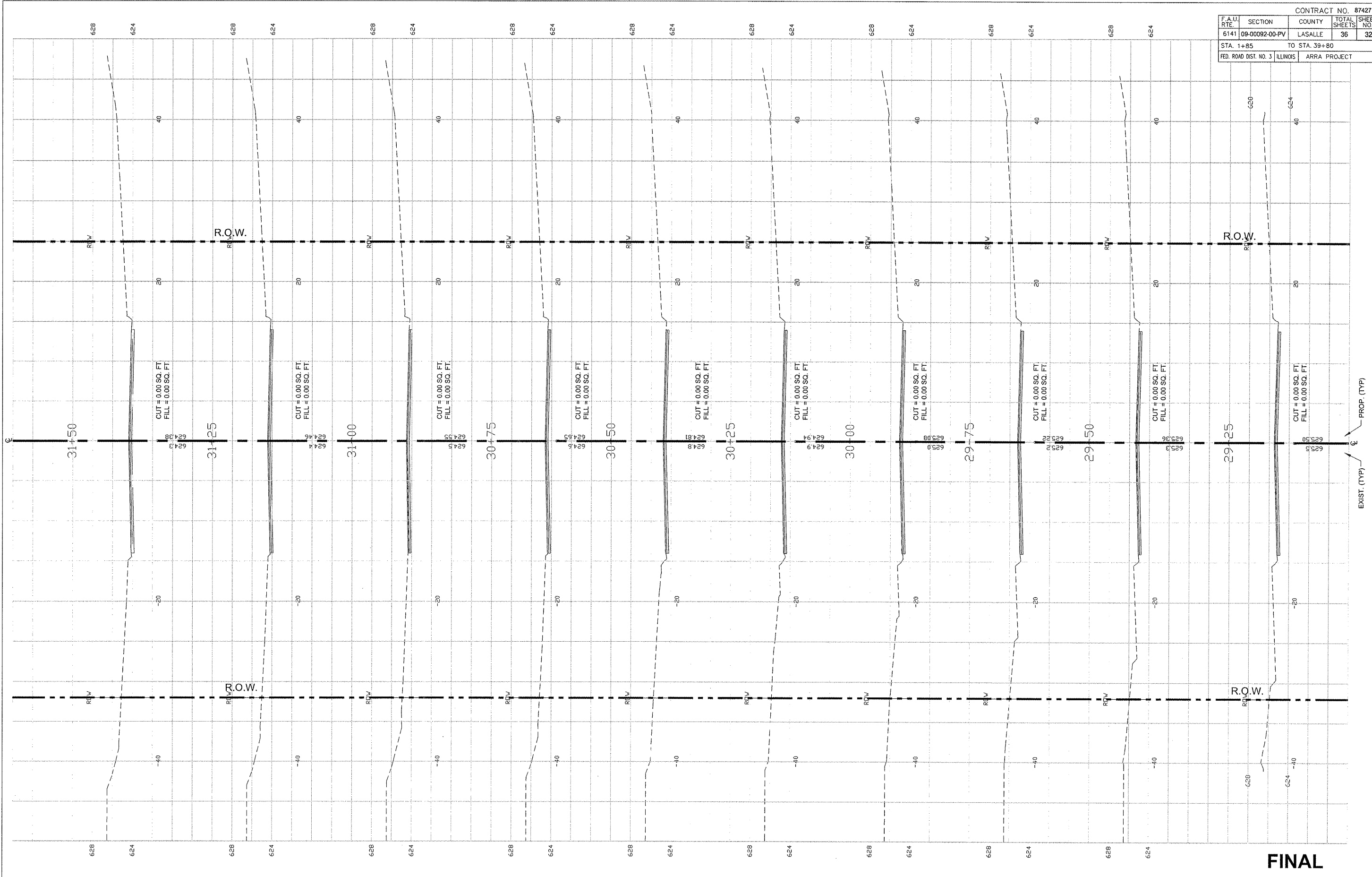


CONTRACT NO. 87427			
F.A.U. RTE.	SECTION	COUNTY	TOTAL SHEETS
6141	09-00092-00-PV	LASALLE	36
STA. 1+85		TO STA. 39+80	
FED. ROAD DIST. NO. 3		ILLINOIS ARRA PROJECT	



SCALE: 1" = 20'

DESIGNED - JEP	REVISED -
DRAWN - JCL	REVISED -
CHECKED - JEP	REVISED -
DATE - 4/10/09	REVISED -

STATE OF ILLINOIS
DEPARTMENT OF TRANSPORTATION

CROSS SECTIONS - STA. 29+25 TO 31+50

EXIST. (TYP)
PROP. (TYP)