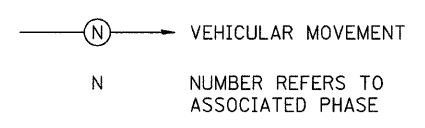


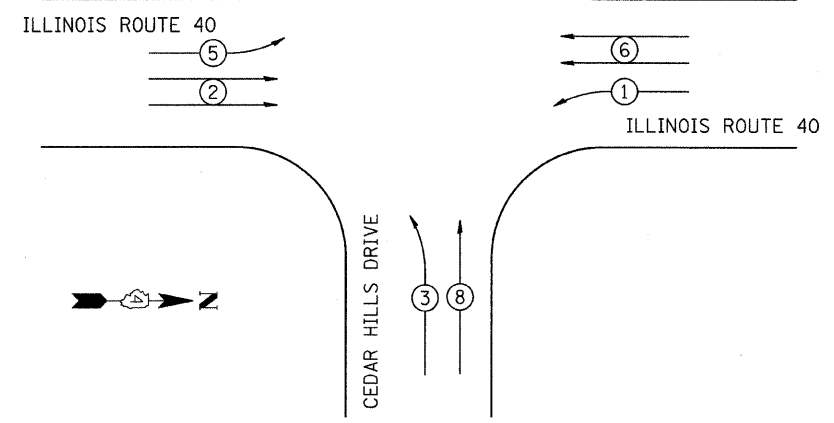
**SCHEDULE OF QUANTITIES**

CONDUIT IN TRENCH, 90mm DIA., PVC	11.0 M
CONDUIT IN TRENCH, 75mm DIA., PVC	46.0 M
CONDUIT IN TRENCH, 50mm DIA., PVC	285.0 M
CONDUIT PUSHED, 90mm DIA., PVC	24.5 M
CONDUIT PUSHED, 75mm DIA., PVC	37.5 M
HANDHOLE	5 EA.
DOUBLE HANDHOLE	1 EA.
ELECTRIC CABLE IN CONDUIT, 600V (XLP-TYPE USE) 1/C NO. 6	51 M
ELECTRIC CABLE IN CONDUIT, SIGNAL NO. 14 7C	465 M
ELECTRIC CABLE IN CONDUIT, LEAD-IN, NO. 18, 3 PAIR	429 M
ELECTRIC CABLE IN CONDUIT, GROUNDING, NO. 6 1/C	141 M
STEEL MAST ARM ASSEMBLY AND POLE 10.36 METER	1 EA.
STEEL MAST ARM ASSEMBLY AND POLE 10.97 METER	1 EA.
STEEL MAST ARM ASSEMBLY AND POLE 15.24 METER	1 EA.
CONCRETE FOUNDATION, TYPE D	1.1 M
CONCRETE FOUNDATION, TYPE E, 750mm DIA.	8.2 M
CONCRETE FOUNDATION, TYPE E, 900mm DIA.	9.2 M
SIGNAL HEAD, 1-FACE, 3-SECTION, MAST ARM MOUNTED	7 EA.
SIGNAL HEAD, 1-FACE, 5-SECTION, BRACKET MOUNTED	4 EA.
SIGNAL HEAD, 1-FACE, 4-SECTION, MAST ARM MOUNTED	4 EA.
TRAFFIC SIGNAL BACKPLATE, LOUVERED	11 EA.
LUMINAIRE, SODIUM VAPOR, MULTI-MOUNT, 250 WATT	2 EA.
SERVICE INSTALLATION, TYPE B	1 EA.
TRENCH AND BACKFILL FOR ELECTRICAL WORK	342 M
INDUCTIVE LOOP DETECTOR	11 EA.
DETECTOR LOOP, TYPE 1	406 M
REMOVE EXISTING CONCRETE FOUNDATION	5 EA.
REMOVE EXISTING HANDHOLE	4 EA.
TEMPORARY TRAFFIC SIGNAL INSTALLATION, LOCATION 2	1 EA.
FULL ACTUATED CONTROLLER AND TYPE IV CABINET, SPECIAL	1 EA.
STEEL MAST ARM ASSEMBLY AND POLE, 15.24 METER	1 EA.

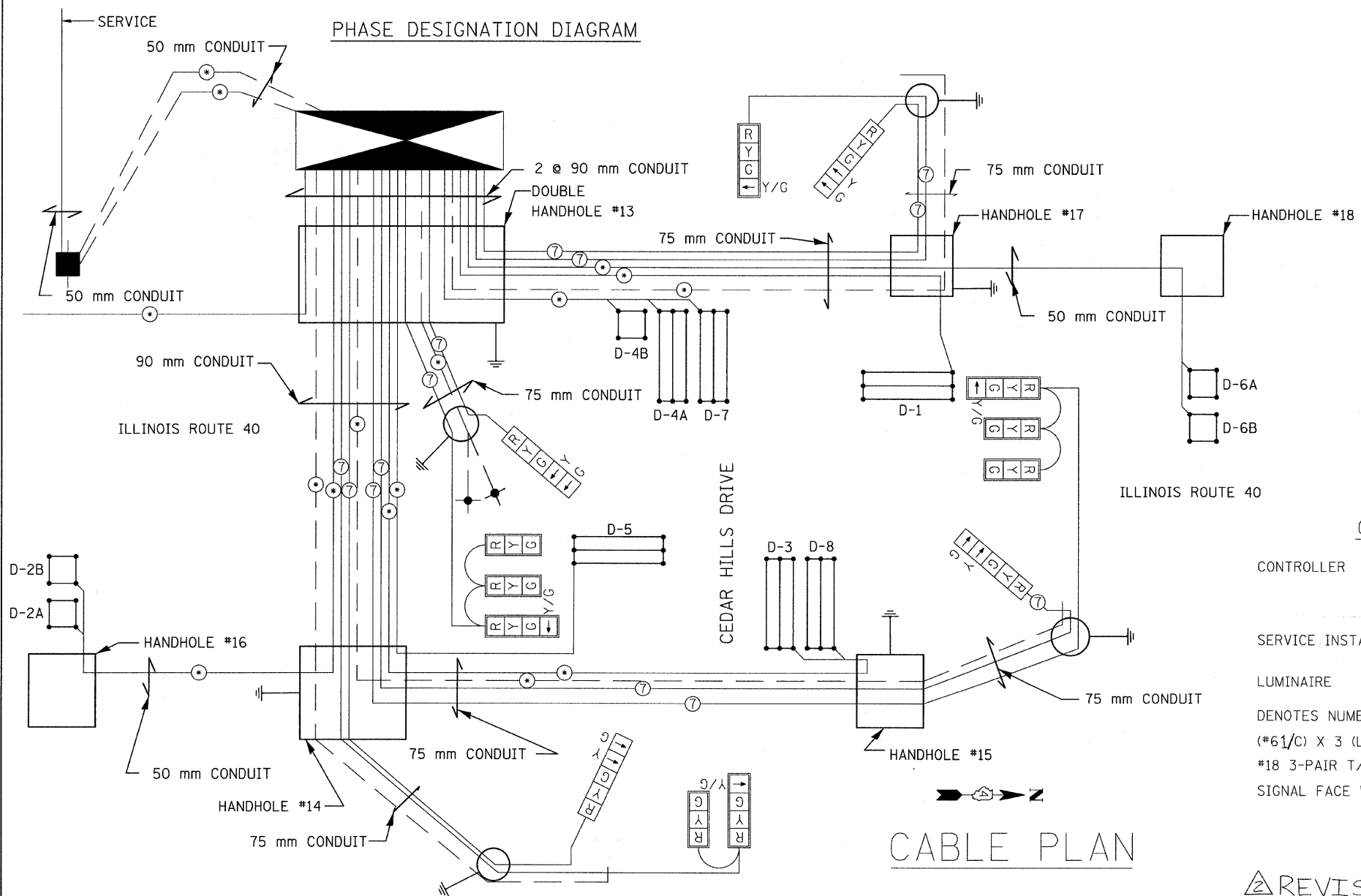
**LEGEND**



REFERRING TO STANDARD 857001, THE VEHICULAR PHASES USED ARE DESIGNATED BELOW.  
CONTROLLER SPECIFIED: ECONOLITE ASC/3 TS-2 TYPE 2 IN TYPE IV CABINET



**PHASE DESIGNATION DIAGRAM**



**CABLE PLAN**

**CABLE PLAN LEGEND**

**DETECTOR ASSIGNMENT SCHEDULE**

DETECTOR LOOP	ASSIGNED PHASE	NO. OF CHANNELS REQUIRED
D-1	1	1
D-2A, D-2B	2	2
D-3	3	1
D-4A, D-4B	4	2
D-5	5	1
D-6A, D-6B	6	2
D-7	7	1
D-8	8	1
<b>TOTAL NUMBER OF CHANNELS REQUIRED:</b>		<b>11</b>

ILLINOIS DEPARTMENT OF TRANSPORTATION  
**PROPOSED TRAFFIC WIRING DIAGRAM**  
F.A. RTE. 646 (IL. RTE. 40)  
AND CEDAR HILLS DRIVE  
SECTION 125W-1, RS-2  
PEORIA COUNTY

SCALE: NONE  
DATE: 031309  
DRAWN BY: JRC, JDU  
CHECKED BY: ECM

REVISED SHEET 7-15-09