

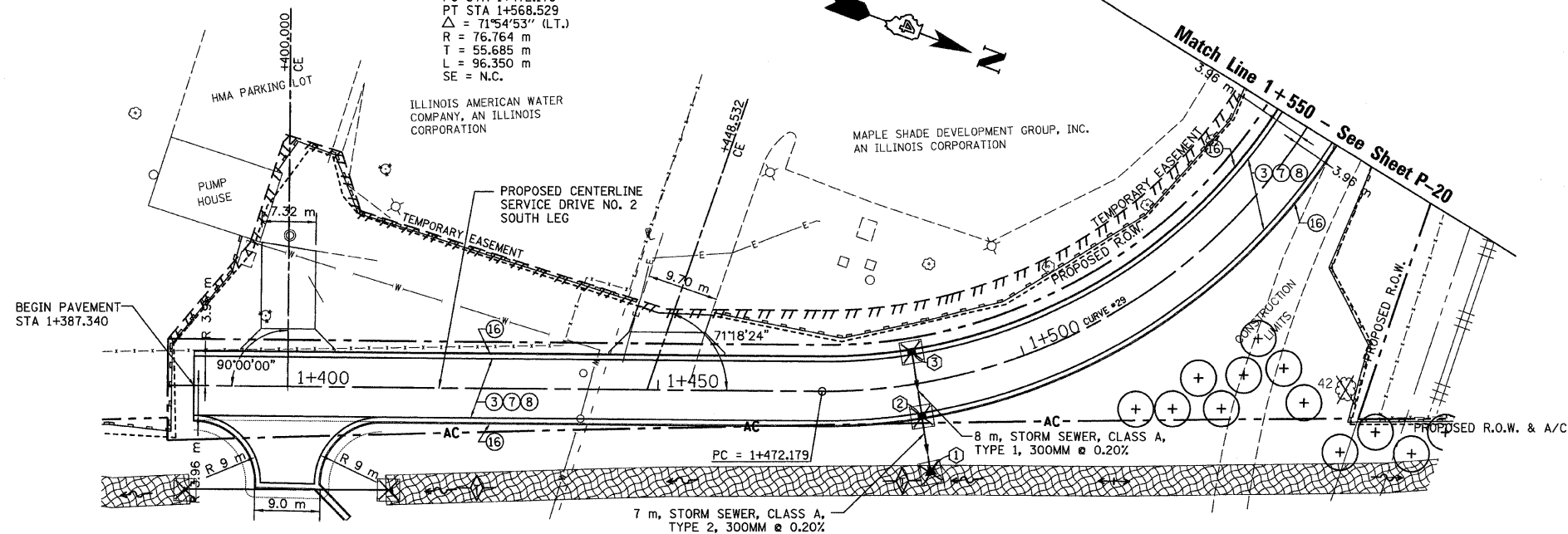
T.B.M. "10" - TOP VALVE STEM FIRE HYD.
 STA. 16+429±, 46 m± RT.
 ELEV. = 238.391

CENTERLINE CURVE DATA
 SERVICE DRIVE NO. 2

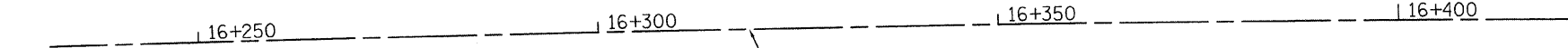
CURVE #29
 PI STA 1+527.864
 PC STA 1+472.179
 PT STA 1+568.529
 $\Delta = 71^{\circ}54'53''$ (LT.)
 R = 76.764 m
 T = 55.685 m
 L = 96.350 m
 SE = N.C.

SEC. 20 T.10N., R.8E., 4th P.M.

RTE NO.	SECTION	COUNTY	TOTAL	SHEET #
FA 646	125W-1, RS-2	PEORIA	256	106
STATION 1+375 TO STATION 1+550				



STA 1+400.109, 13.8 m RT.
 26.5 m - P CUL CL C 1 600
 W/ END SECTIONS 600



LEGEND - EROSION CONTROL

- INLET & PIPE PROTECTION
- TEMPORARY DITCH CHECKS
- PERIMETER EROSION CONTROL BARRIER
- EROSION CONTROL BLANKET

LEGEND

- ① FABRIC FORMED CONCRETE REVELMENT MAT
 - ② AGGREGATE BASE COURSE
 - ③ HOT-MIX ASPHALT BASE COURSE
 - ④ HOT-MIX ASPHALT BASE COURSE WIDENING
 - ⑤ AGGREGATE SURFACE COURSE
 - ⑥ LEVELING BINDER (MACHINE METHOD)
 - ⑦ HOT-MIX ASPHALT BINDER COURSE
 - ⑧ POLYMERIZED HOT-MIX ASPHALT SURFACE COURSE
 - ⑨ HOT-MIX ASPHALT REMOVAL-BUTT JOINT
 - ⑩ HOT-MIX ASPHALT PAVEMENT (FULL-DEPTH)
 - ⑪ PORTLAND CEMENT CONCRETE PAVEMENT
 - ⑫ PORTLAND CEMENT CONCRETE SIDEWALK
 - ⑬ HOT-MIX ASPHALT REMOVAL (VAR. DEPTH)
 - ⑭ AGGREGATE SHOULDERS
 - ⑮ HOT-MIX ASPHALT SHOULDERS
 - ⑯ COMBINATION CONCRETE CURB AND GUTTER
- ① PRC FL-END SEC 300
 STA. 1+484, 12.5 m RT.
 INV. EL. = 237.03
- ② INLETS TG-1
 STA. 1+485, 3.96 m RT.
 E.P. EL. = 238.084
 OUTLET EL. = 237.035
 INLET EL. = 237.035
- ③ INLETS TG-1
 STA. 1+485, 3.96 m LT.
 E.P. EL. = 238.084
 OUTLET EL. = 237.056

241

241

240

240

239

239

238

238

237

237

236

236

235

235

234

234

1+350	238.7	1+400	239.1	239.3	239.013	239.0	238.763	1+450	238.5	238.513	238.7	238.263	1+500	238.3	238.013	238.3	237.763	1+550	237.8	237.513
-------	-------	-------	-------	-------	---------	-------	---------	-------	-------	---------	-------	---------	-------	-------	---------	-------	---------	-------	-------	---------

REVISIONS	
NAME	DATE

ILLINOIS DEPARTMENT OF TRANSPORTATION

PLAN AND PROFILE
ILLINOIS ROUTE 40
 SERVICE DRIVE NO. 2
 STA. 1+375 TO STA. 1+550

SCALE: 1:400 H / 1:40 V
 DATE: 03/13/09

DRAWN BY: JRC, JDU
 CHECKED BY: ECM