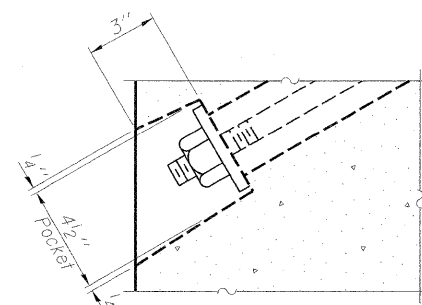


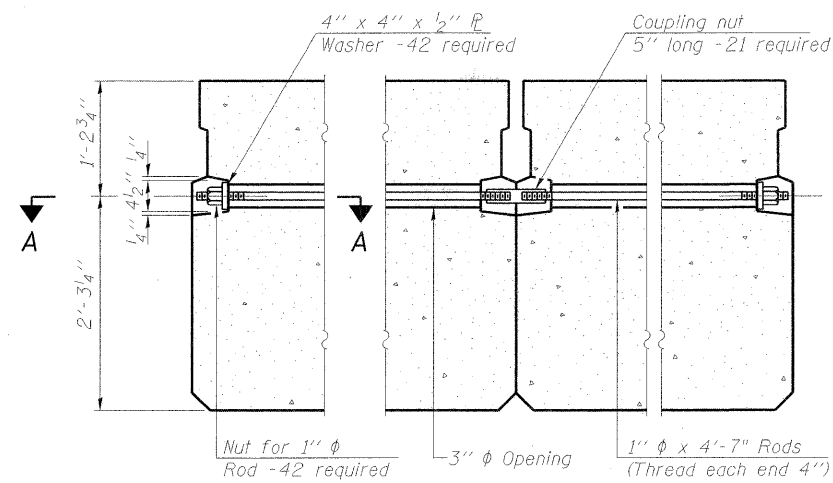
FABRIC BEARING PAD
(Interior)

FABRIC BEARING PAD
(Exterior)

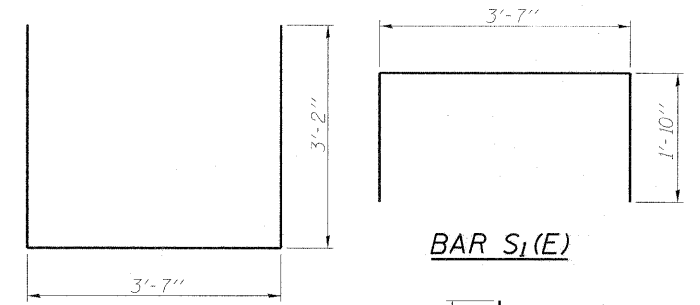
FIXED



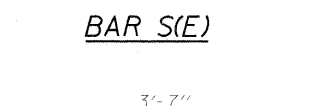
SECTION A-A



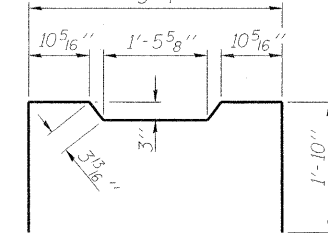
TYPICAL TRANSVERSE TIE ASSEMBLY



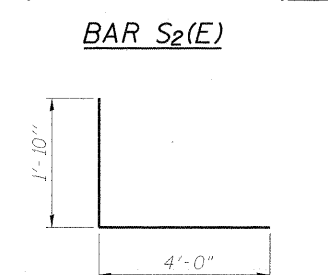
BAR S1(E)



BAR S(E)



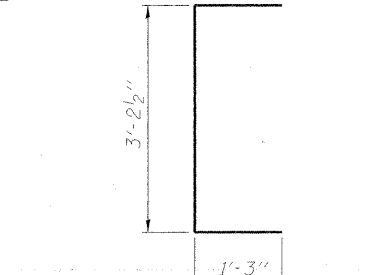
BAR S2(E)



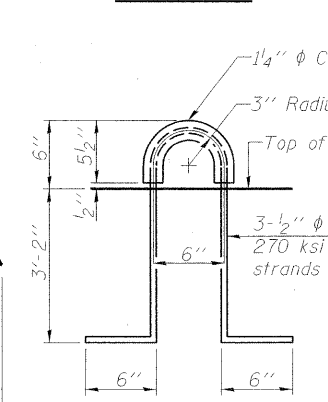
BAR S3(E)



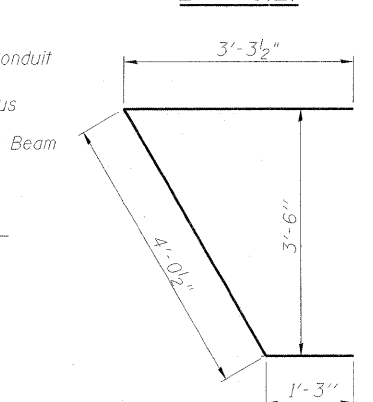
BAR S4(E)



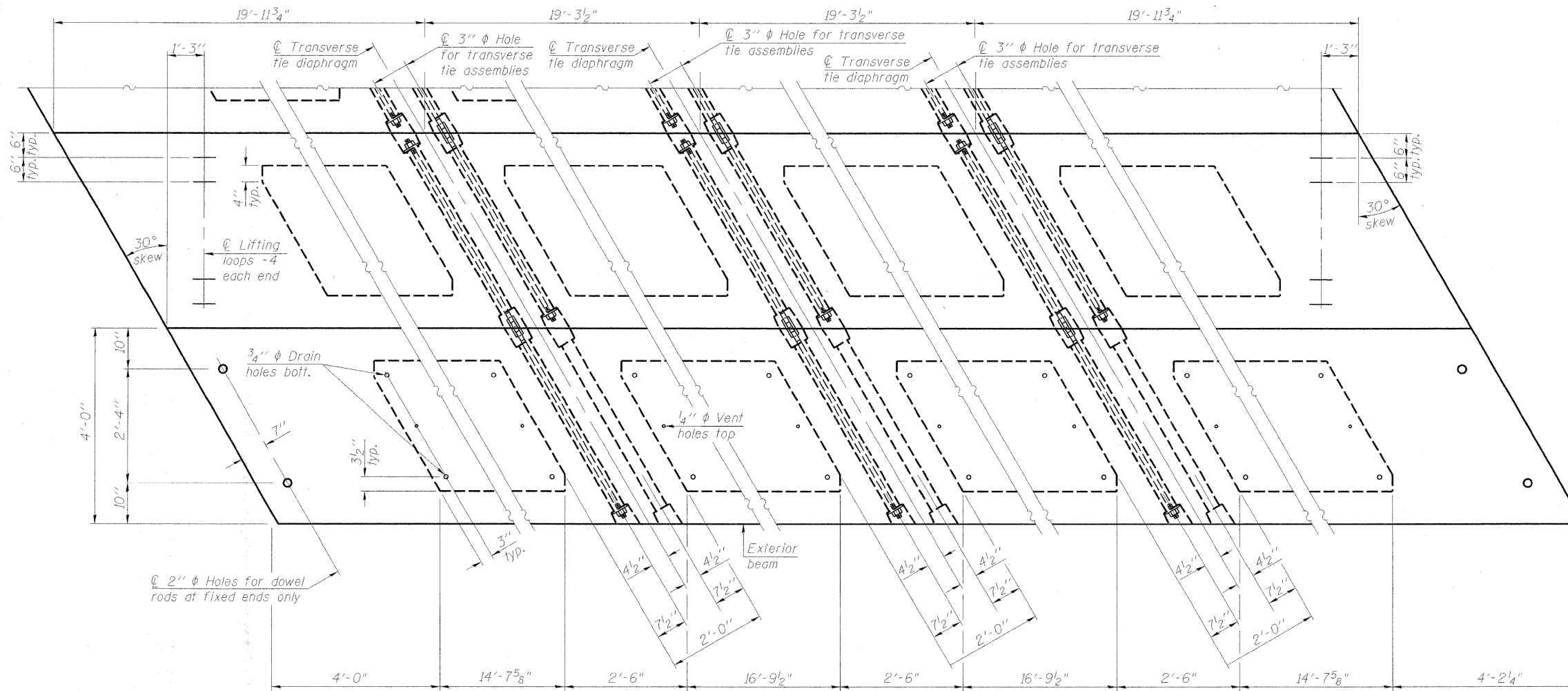
BAR U(E)



LIFTING LOOP DETAIL



BAR U1(E)



NOTES

Prestressing steel shall be uncoated high strength, low relaxation 7-wire strand, Grade 270. The nominal diameter shall be 1/2" and the nominal cross-sectional area shall be 0.153 sq. in. The 1" rods in the transverse tie assembly shall be tightened to a snug fit and the threads set. Pockets on exterior faces of bridge shall be filled with grout after transverse tie assembly is in place.

Reinforcement bars shall conform to ASTM A 706 (IL MOD), Grade 60. (See Special Provisions)

Two 1/8" fabric adjusting shims of the dimensions of the exterior bearing pad shall be provided for each bearing pad location.

A minimum 2 1/2" diameter lifting pin shall be used to engage the lifting loops during handling.

Corrosion Inhibitor, per Article 1020.05(b)(12) and 1021.06 of the Standard Specifications, shall be used in the concrete for precast prestressed concrete deck beams.

Compressive strength of prestressed concrete, f'c, shall be 6000 psi.

Compressive strength of prestressed concrete at release, f'ci, shall be 5000 psi.

PLAN VIEW

Note: Connect beams in pairs with the transverse tie configuration shown.

BILL OF MATERIAL

Precast Prestressed Conc. Deck Bms. (42" depth)	Sq. Ft.	2513
---	---------	------

PPC DECK BEAM DETAILS
TODD SCHOOL ROAD BRIDGE
OVER BRANCH OF COPPERAS CREEK
CH D56
SEC. 08-00041-02-BR
PEORIA COUNTY, ILLINOIS
STATION 37+55
STRUCTURE NO. 072-3144

08/06/09	08/06/09	08/06/09	08/06/09	08/06/09	08/06/09
LAYOUT	MEM	CHK	APP	DES	CON
01/14/09	02/06/09	02/06/09	02/06/09	02/06/09	02/06/09
08/06/09	08/06/09	08/06/09	08/06/09	08/06/09	08/06/09



SHEET NO. 5	SECTION	COUNTY	TOTAL SHEETS	SHEET NO.
11 SHEETS	08-00041-02-BR	PEORIA	25	13
CONTRACT NO. 89479			FED. ROAD DIST. NO. 2 ILLINOIS FED. AID PROJECT	

05/24/2009
 A:\C81\08\08\0077\CAD\Struct\Sheet\5-005-deck beam det.dwg