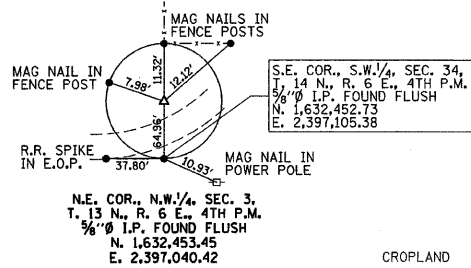
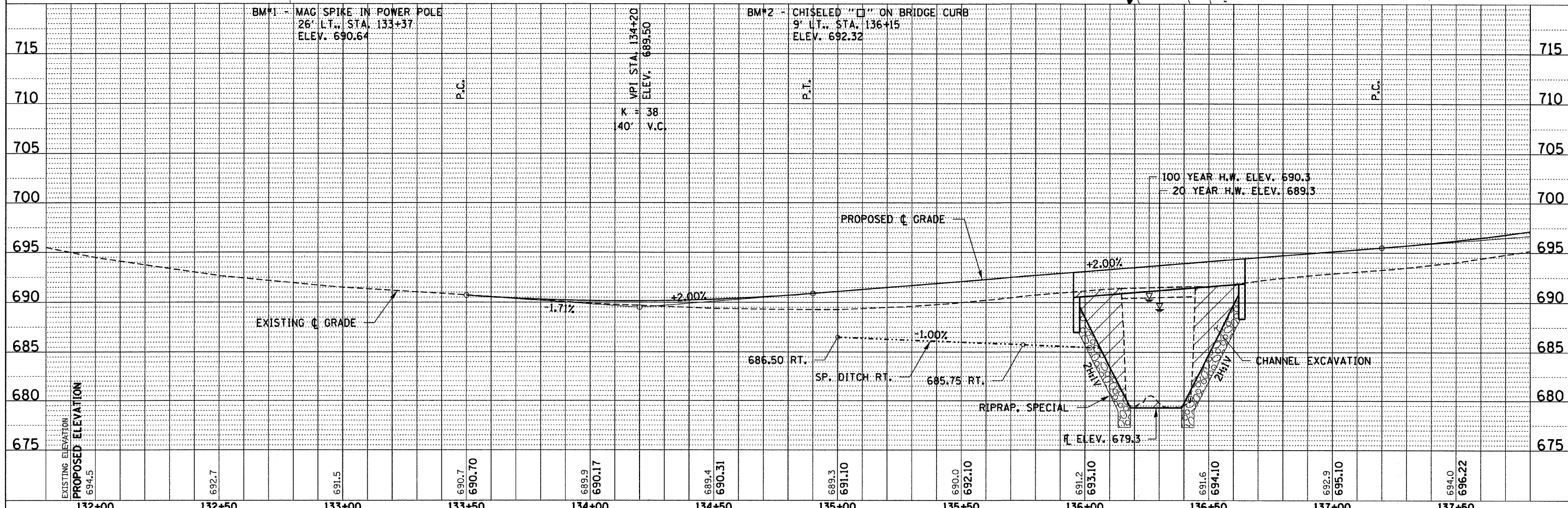
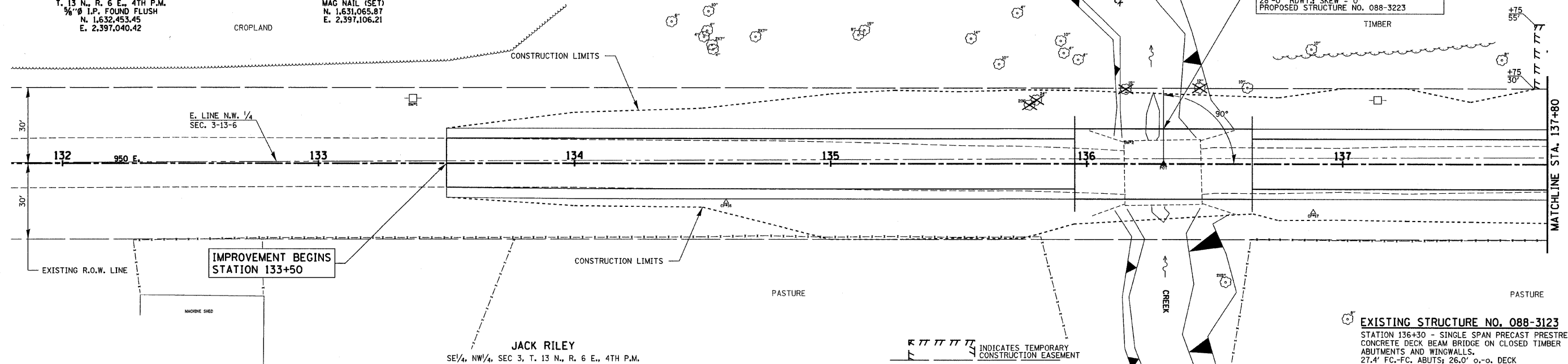
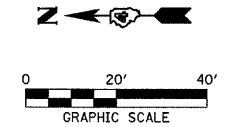


THEODORE ROLAND KRUGER, et al
 SW 1/4, NE 1/4, SEC 3, T. 13 N., R. 6 E., 4TH P.M.



P.O.T. STA. 131+00.60
 MAG NAIL (SET)
 N. 1,631,065.87
 E. 2,397,106.21



PLAN	SURVEYED	DATE
	ALIGNED	
	CHECKED	
	BY	
	NO. OF PAGES	
	FILE NAME	

PROFILE	SURVEYED	DATE
	GRADES CHECKED	
	B.M. NOTED	
	STRUCTURE NOTATIONS	
	BY	

FILE NAME = 080274-sht-pp1.dgn	USER NAME =	DESIGNED - J.W.F.	REVISED -	STATE OF ILLINOIS STARK COUNTY HIGHWAY DEPARTMENT	HAMPTON, LENZINI & RENWICK, INC. CIVIL & STRUCTURAL ENGINEERS LAND SURVEYORS	PLAN & PROFILE 950 E.	C.H.	SECTION	COUNTY	TOTAL SHEETS	SHEET NO.
PLOT SCALE =	CHECKED - S.W.M.	REVISED -	23				08-00158-00-BR	STARK	23	4	
PLOT DATE = 5/13/2009	DATE - 05/13/09	REVISED -	CONTRACT NO. 89509								
			FED. ROAD DIST. NO. ILLINOIS FED. AID PROJECT								