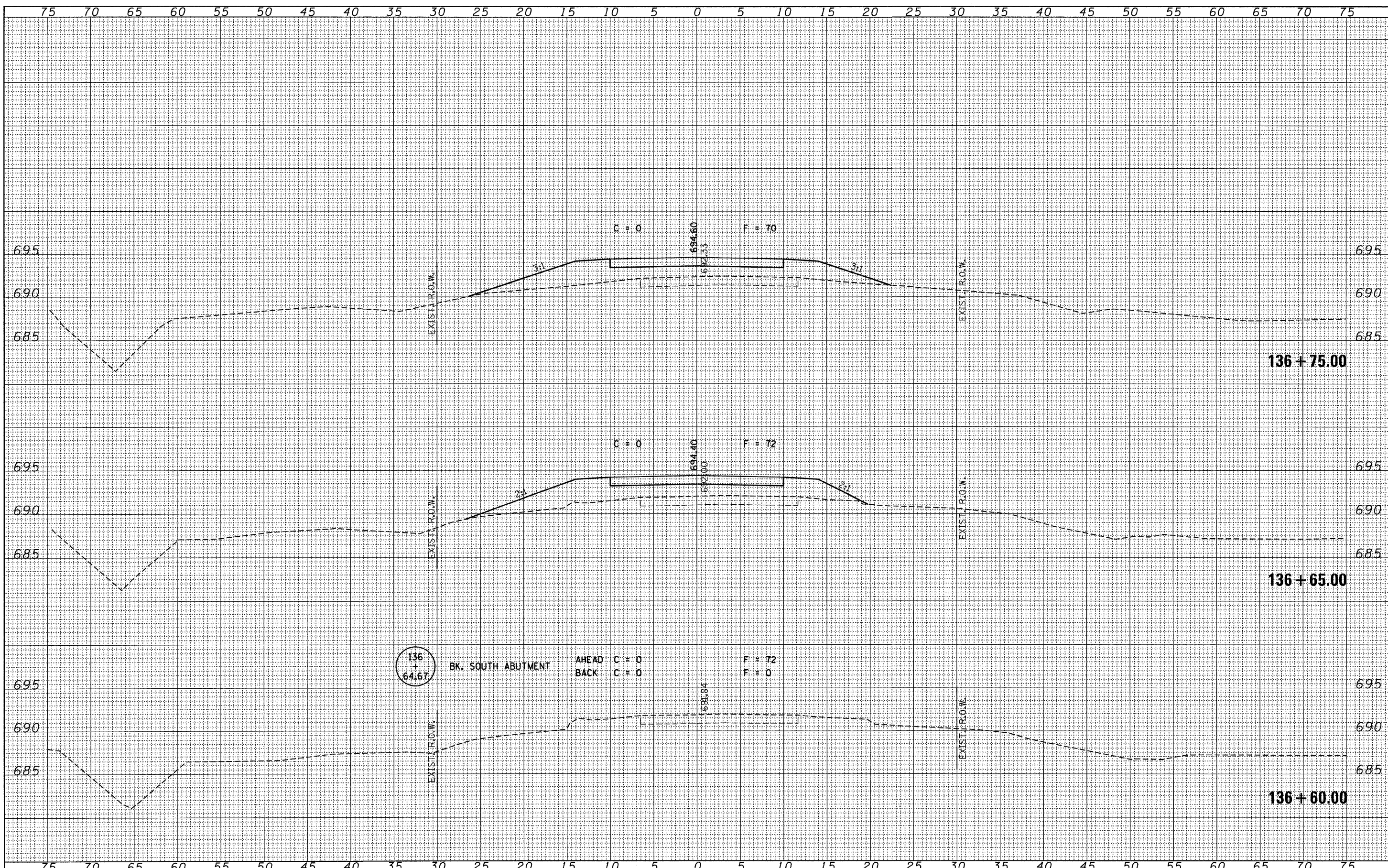


DATE	
BY	
FINAL SURVEY	SURVEYED
NOTE BOOK	PLOTTED
NO.	DATE
	AREAS CHECKED

DATE	
BY	
ORIGINAL SURVEY	SURVEYED
NOTE BOOK	PLOTTED
NO.	DATE
	AREAS CHECKED



FILE NAME = 080274-shr-axs.dgn
 USER NAME =
 PLOT SCALE =
 PLOT DATE = 5/13/2009

DESIGNED	- J.W.F.	REVISED	-
DRAWN	- D.T.M.	REVISED	-
CHECKED	- S.W.M.	REVISED	-
DATE	- 05/13/09	REVISED	-

STATE OF ILLINOIS
 STARK COUNTY HIGHWAY DEPARTMENT

HLR HAMPTON, LENZINI & RENWICK, INC.
 CIVIL & STRUCTURAL ENGINEERS
 LAND SURVEYORS
 SCALE: 1" = 5'
 SHEET NO. OF SHEETS

CROSS SECTIONS
950 E.
 STA. 136+60.00 TO STA. 136+75.00

C.H.	SECTION	COUNTY	TOTAL SHEETS	SHEET NO.
23	08-00158-00-BR	STARK	23	10
CONTRACT NO. 89509				
FED. ROAD DIST. NO. ILLINOIS FED. AID PROJECT				