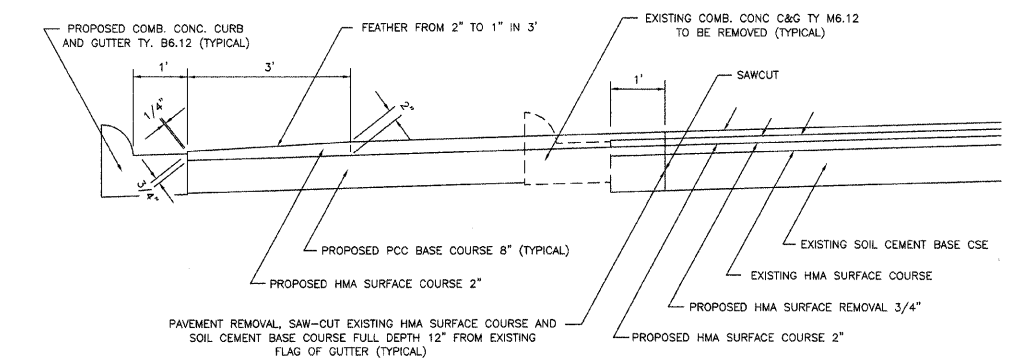
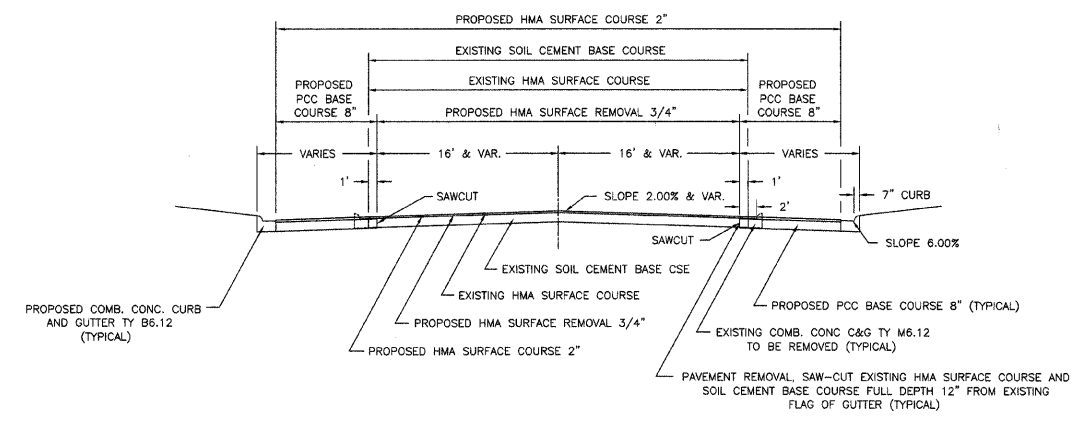
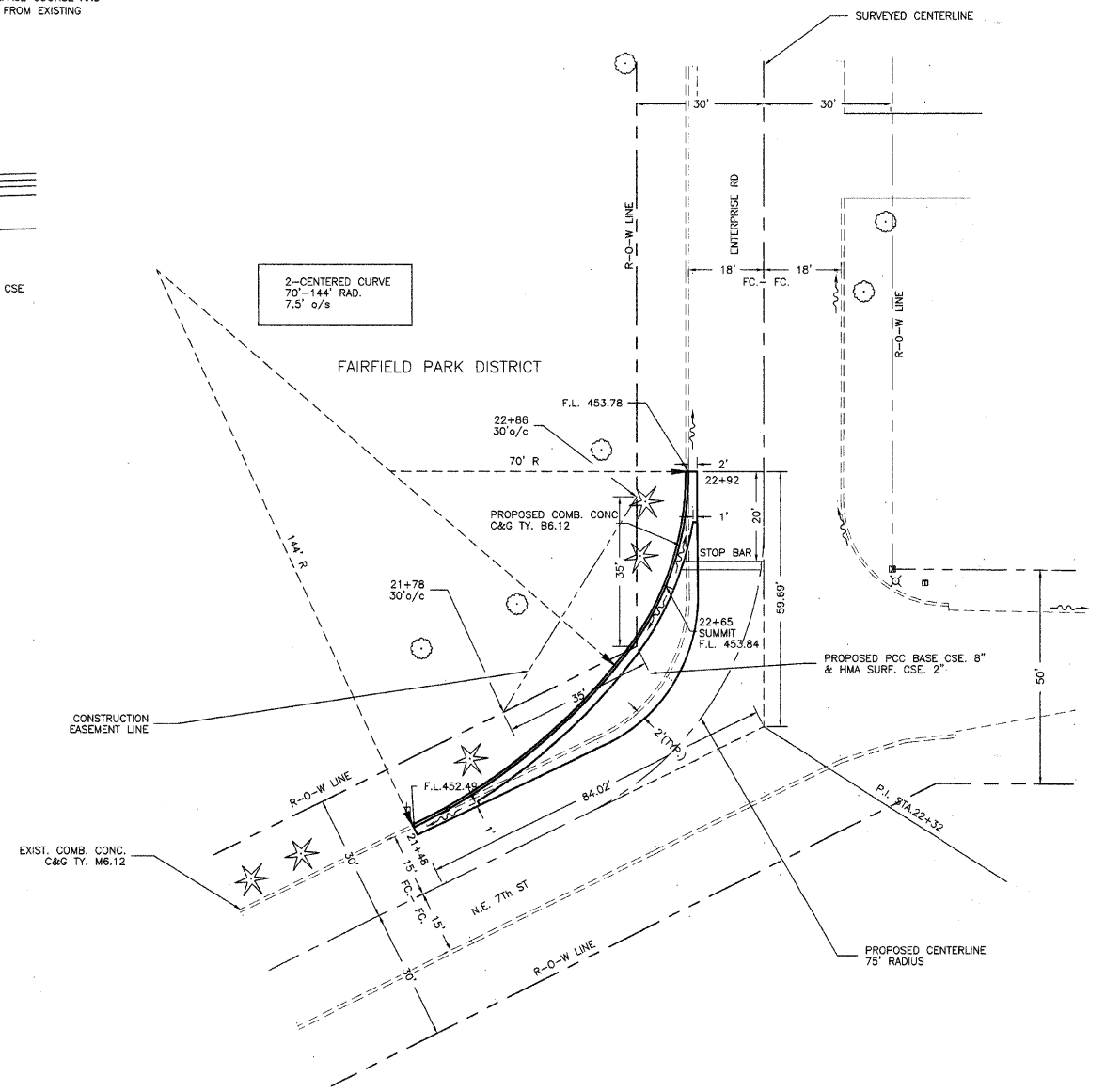


SECTION	06-00046-00-RS	TOTAL SHEETS	6	SHEET NO.	6
CITY	FAIRFIELD				

STA. 21+48 TO STA. 23+24
CONTRACT NO. 95575



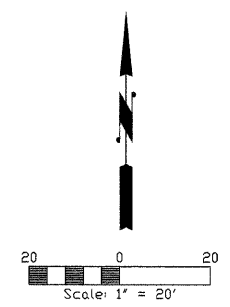
TYPICAL SECTION PROPOSED STREET(LT. SIDE ONLY)



MAX EDWARD TIPPS

QUANTITIES THIS SHEET

- PCC BASE COURSE 8"
LT. STA. 21+48 TO STA. 22+92 = 63 SQ. YD.
- COMB. CONCRETE CURB & GUTTER TYPE B6.12
LT. STA. 21+48 TO STA. 22+92 = 113 FOOT
- COMB. CONCRETE CURB & GUTTER REMOVAL
LT. STA. 21+48 TO STA. 22+92 = 119 FOOT
- PAVEMENT REMOVAL
LT. STA. 21+48 TO STA. 22+92 = 13 SQ. YD.
- EARTH EXCAVATION
LT. STA. 21+48 TO STA. 22+92 = 57 CU. YD.



- LEGEND
- CONIF. TREE
 - ✱ DECID. TREE
 - ⊗ LIGHT POLE
 - ⊠ R-O-W MARKER
 - ⊞ TEL. PEDESTAL

BENCHMARK ELEV. 454.65
P-K NAIL IN POWER POLE
S.E. CORNER OF N.E. 7TH STREET
AND ENTERPRISE ROAD

DATE: 02/23/2009
REV: 05/15/2009
SCALE: 1"=50'
DRAWN BY: DLG
PROJECT: P-1440

CONNOR & CONNOR, Inc.
CONSULTING ENGINEERS
209 North Cross Street
ROBINSON, ILLINOIS 62454
Phone: 618-544-8623
Fax: 618-544-3012
Licensed Engineers
Licensed Surveyors

INTERSECTION DETAIL STA. 22+32
SEC. 06-00046-00-RS
CITY OF FAIRFIELD