

F.A.S. RTE.	SECTION	COUNTY	TOTAL SHEETS	SHEET NO.
2660	06-00065-00-RS	MOULTRIE	7	1
CH 19	ILLINOIS	CONTRACT NO. 95591		

**STATE OF ILLINOIS**  
**DEPARTMENT OF TRANSPORTATION**  
**DIVISION OF HIGHWAYS**  
**PLANS FOR PROPOSED**  
**FEDERAL AID PROJECT**  
**FAS ROUTE 2660 (CH 19)**  
**SECTION 06-00065-00-RS**  
**MOULTRIE COUNTY**  
**WHITLEY CREEK ACCESS ROAD**  
**C-97-102-99**  
**PROJECT NO. ARA-RS-2660 (101)**

**INDEX OF SHEETS**

SHEET NO	TITLE
1	COVER SHEET
2	SUMMARY OF QUANTITIES
2	GENERAL NOTES
2	SCHEDULE OF QUANTITIES
3	ALIGNMENT
4	TYPICAL CROSS SECTIONS
5	INTERSECTION DETAIL
6	DETAILS FOR ENTRANCE & SIDE ROAD
7	DETAILS FOR MAILBOX TURNOUTS

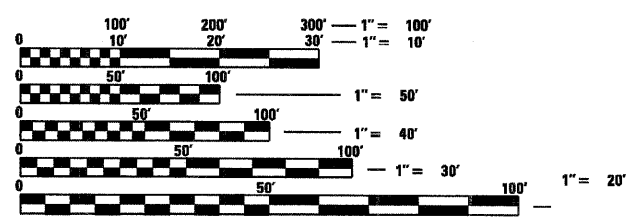
**LIST OF ILLINOIS DOT HIGHWAY STANDARDS**

701901-01	TYPICAL APPLICATION OF TRAFFIC CONTROL DEVICES
BLR 22-6	TYPICAL APPLICATION OF TRAFFIC CONTROL DEVICES FOR CONSTRUCTION ON RURAL LOCAL HIGHWAYS



**UTILITY CONTACTS:**

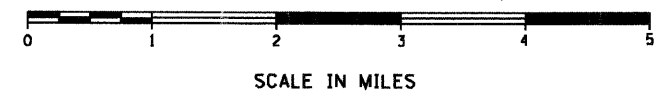
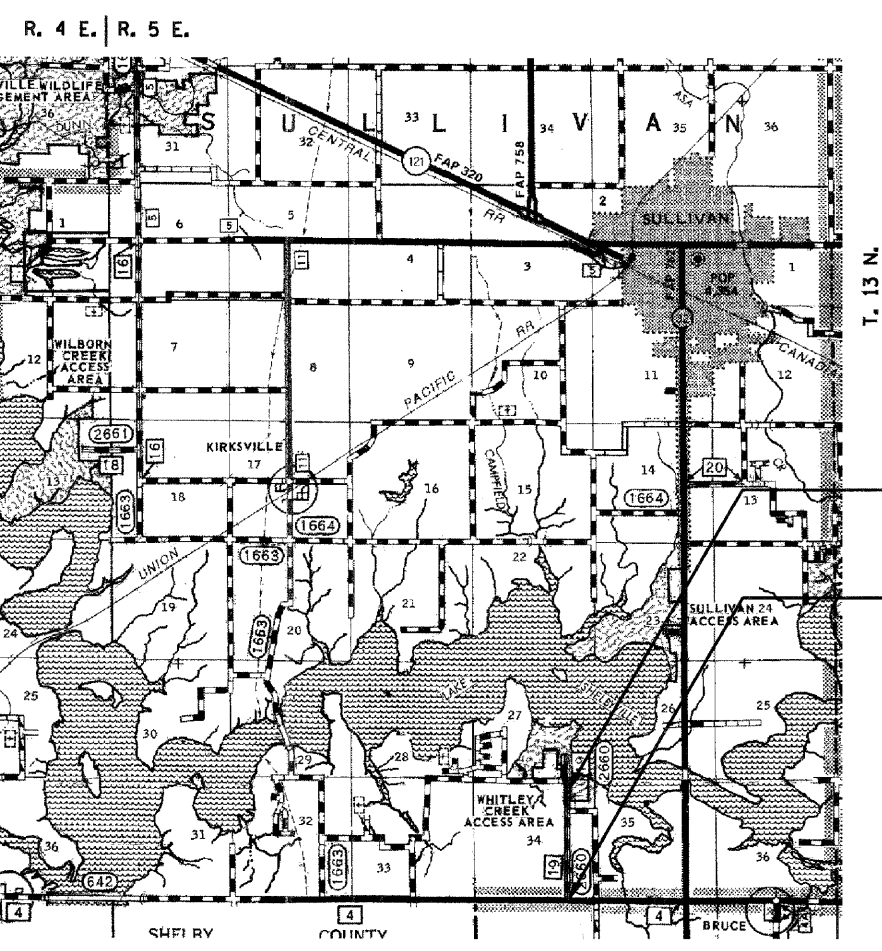
UTILITY TYPE:	UTILITY TYPE:
WATER	ELECTRIC
CENTRAL MACOUPIN CITY	M.J.M. ELECTRIC COOPERATIVE
RURAL WATER	(217) 854-3137
(618) 498-6418	ATTN: CHARLIE BAKER
ATTN: BOB MANNS	
UTILITY TYPE:	
TELEPHONE	
FRONTIER COMMUNICATIONS	
(402) 250-1095	
ATTN: BILL DANIEL	



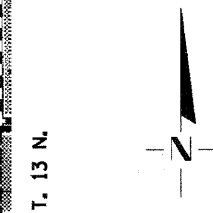
FULL SIZE PLANS HAVE BEEN PREPARED USING STANDARD ENGINEERING SCALES. REDUCED SIZED PLANS WILL NOT CONFORM TO STANDARD SCALES. IN MAKING MEASUREMENTS ON REDUCED PLANS, THE ABOVE SCALES MAY BE USED.

J.U.L.I.E.  
 JOINT UTILITY LOCATION INFORMATION FOR EXCAVATION  
 1-800-892-0123  
 OR 811

CONTRACT NO. 95591

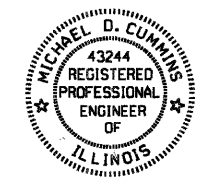


NET LENGTH OF SECTION = 5,354.00 FEET = 1.014 MILES  
 FUNCTIONAL CLASS - COLLECTOR  
 DESIGN SPEED - 50 MPH  
 ADT - 650



END CH 19 IMPROVEMENT  
 STA 53+66

BEGIN CH 19 IMPROVEMENT  
 STA 0+12



*Michael D. Cummins*  
 ILLINOIS PROFESSIONAL NO. 43244  
 (Expires 11/30/09)

APPROVED	<i>May 28</i>	. 20 09
	<i>Douglas DeLoe</i>	
	MOULTRIE COUNTY ENGINEER	
PASSED	<i>6-1</i>	. 20 09
	<i>Monica Knott</i>	
	DISTRICT SEVEN ENGINEER OF LOCAL ROADS AND STREETS	
RELEASED FOR BID BASED ON LIMITED REVIEW	<i>6-1</i>	. 20 09
	<i>Tom L. Anshel</i>	
	DEPUTY DIRECTOR OF HIGHWAYS, REGION FOUR ENGINEER	
STATE OF ILLINOIS DEPARTMENT OF TRANSPORTATION		