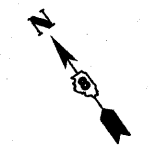
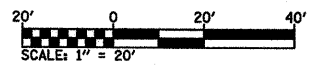
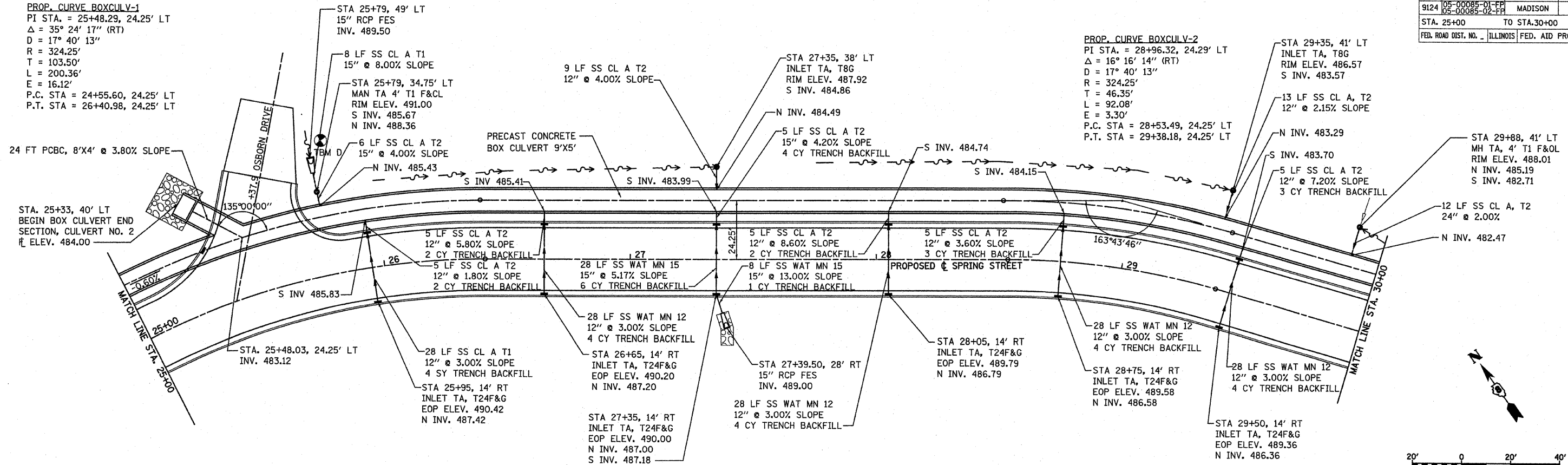


F.A. RTE.	SECTION	COUNTY	TOTAL SHEETS	SHEET NO.
9124	05-00085-01-FP 05-00085-02-FP	MADISON	61	23
STA. 25+00		TO STA. 30+00		
FED. ROAD DIST. NO. ILLINOIS		FED. AID PROJECT		

PROP. CURVE BOXCULV-1  
 PI STA. = 25+48.29, 24.25' LT  
 $\Delta = 35^\circ 24' 17''$  (RT)  
 $D = 17^\circ 40' 13''$   
 $R = 324.25'$   
 $T = 103.50'$   
 $L = 200.36'$   
 $E = 16.12'$   
 P.C. STA = 24+55.60, 24.25' LT  
 P.T. STA = 26+40.98, 24.25' LT

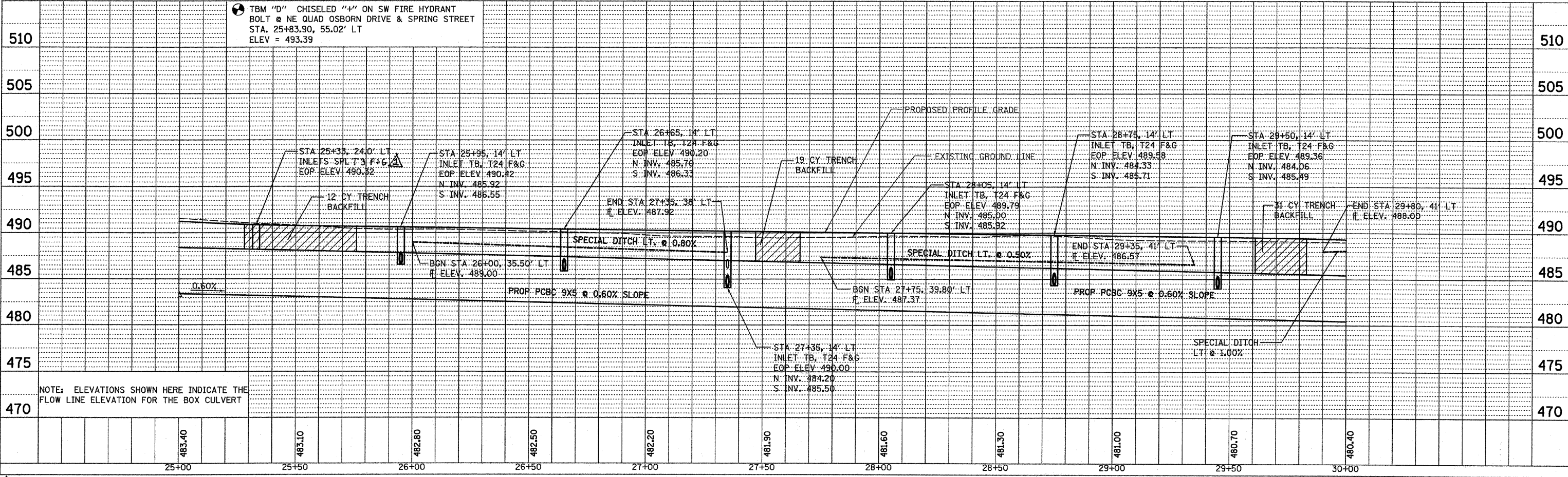
PROP. CURVE BOXCULV-2  
 PI STA. = 28+96.32, 24.29' LT  
 $\Delta = 16^\circ 16' 14''$  (RT)  
 $D = 17^\circ 40' 13''$   
 $R = 324.25'$   
 $T = 46.35'$   
 $L = 92.08'$   
 $E = 3.30'$   
 P.C. STA = 28+53.49, 24.25' LT  
 P.T. STA = 29+38.18, 24.25' LT



DATE	BY
DATE	BY
DATE	BY

DATE	BY
DATE	BY
DATE	BY

PLOT DATE = 7/15/2009  
 FILE NAME = H:\P\2507\Microstation V8\Combined\507\boxculv1.plm.dgn  
 USER NAME = gcrans



NOTE: ELEVATIONS SHOWN HERE INDICATE THE FLOW LINE ELEVATION FOR THE BOX CULVERT

REVISD 7/15/09

DRAINAGE PLAN AND PROFILE STA 25+00 TO STA 30+00