

STATE OF ILLINOIS
DEPARTMENT OF TRANSPORTATION
DIVISION OF HIGHWAYS

PLANS FOR PROPOSED
LOCAL AGENCY PROJECT

FAU ROUTE 9249 (MONROE STREET)
SECTION 09-00015-01-SW
PROJECT NO. ARA-5011(279)
CITY OF LEBANON, ILLINOIS
ST. CLAIR COUNTY
JOB NO. C-98-365-09

| | | | | |
|---------------------|----------------|------------------|--------------|-----------|
| F.A.U. ROUTE NO. | SECTION | COUNTY | TOTAL SHEETS | SHEET NO. |
| 9249 | 09-00015-01-SW | ST. CLAIR | 15 | 1 |
| STA. 10+00.00 | | TO STA. 79+10.00 | | |
| FEDERAL AID PROJECT | | CONTRACT 97385 | | |

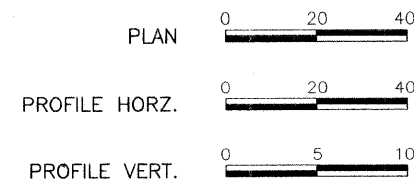
INDEX OF SHEETS

- COVER SHEET
- SUMMARY OF QUANTITIES, GENERAL NOTES & DETAILS
- TYPICAL SECTIONS & SCHEDULES
- 4.-15. PLAN AND PROFILE SHEETS

APPLICABLE IDOT HIGHWAY STANDARDS:

424001-05
606001-04
701501-05
701801-04
701901-01
720011-01
729001-01
BLR 18-5

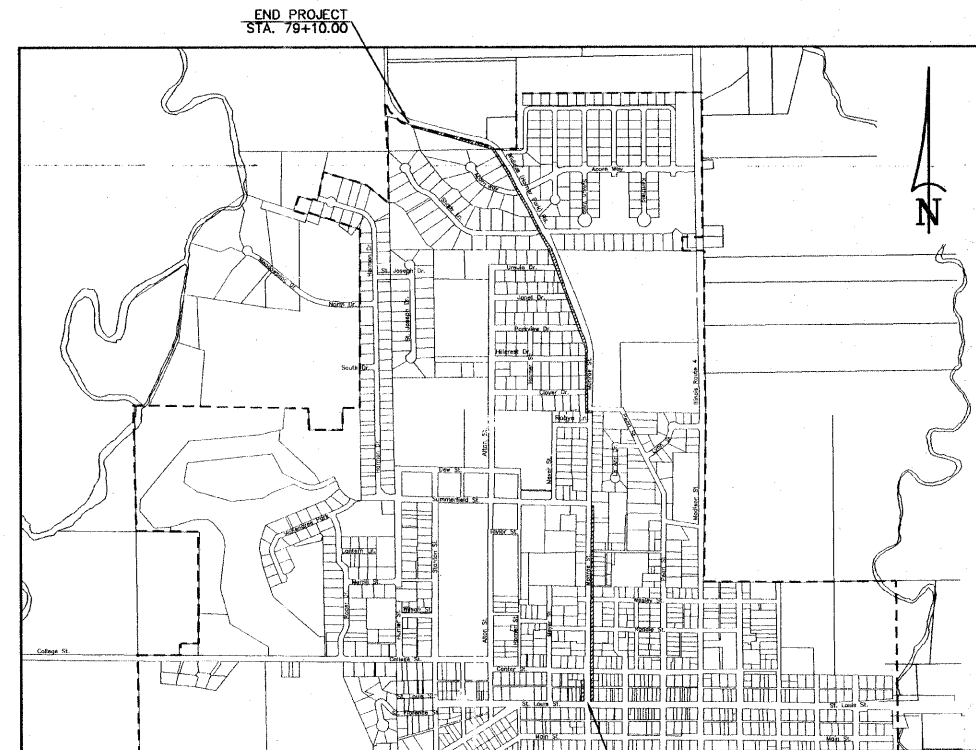
SCALES:



| UTILITY TYPE | NAME OF UTILITY | PHONE NUMBER |
|----------------|------------------------|----------------|
| ELECTRIC | AMEREN IP | 1-800-755-5000 |
| GAS | AMEREN IP | 1-800-755-5000 |
| WATER | CITY OF LEBANON | 1-618-537-4976 |
| TELEPHONE | AT&T | 1-800-480-8088 |
| CABLE | CHARTER COMMUNICATIONS | 1-888-438-2427 |
| SANITARY SEWER | CITY OF LEBANON | 1-618-537-4976 |

MONROE STREET

ROADWAY DESIGNATION: URBAN COLLECTOR
DESIGN SPEED: 30 M.P.H.
DESIGN YEAR: (2017) ADT: 2415



LOCATION MAP
NOT TO SCALE

LENGTH OF IMPROVEMENT 6,910 FT.=1.309 MI.



STATE OF ILLINOIS
DEPARTMENT OF TRANSPORTATION

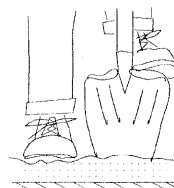
APPROVED: 5/21/09 DATE
Scott Abner
SCOTT ABNER, MAYOR

PASSED: 6/3/09 DATE
John C. Murrell
DISTRICT 8 ENGINEER OF LOCAL ROADS & STREETS

RELEASED FOR BID
BASED ON LIMITED REVIEW: 6/3/09 DATE
Mary C. Lamie, P.E.
MARY C. LAMIE, P.E.
DEPUTY DIRECTOR OF HIGHWAYS
REGION FIVE ENGINEER

HOLD IT ! CALL BEFORE YOU DIG !

Phone J.U.L.I.E.



Underground Cable

The owner would like to remind you that underground utility facilities can be damaged by shovel blades or other digging equipment. You can prevent damage or possible personal danger by phoning 800/892-0123 at least 48 hours before you dig. That's the toll-free number for "J.U.L.I.E.", which stands for Joint Utilities Location Information for Excavators.

If there are any pipes, cables, lines or mains in the excavation area, utility personnel will be out to mark the facilities so you can work around them.

Toll Free 800/892-0123

PREPARED BY:

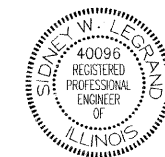


RHUTASEL and ASSOCIATES, INC.

CONSULTING ENGINEERS • LAND SURVEYORS

CORPORATE OFFICE
4 INDUSTRIAL DRIVE
FREEBURG, ILLINOIS 62243
(618) 539-3178

REGIONAL OFFICE
201 SOUTH LOCUST STREET
CENTRALIA, ILLINOIS 62801
(618) 532-1992



Sidney W. Legrand
Date of Signing: 5/20/09
Date of License Expiration: 11/30/09