

STATE OF ILLINOIS
DEPARTMENT OF TRANSPORTATION
DIVISION OF HIGHWAYS

**PLANS FOR PROPOSED
FEDERAL AID HIGHWAY**

CITY OF EAST ST LOUIS
LAPP IMPROVEMENT PROJECT
STATE STREET (F.A.U. RTE. 9182)
CITY SECTION 05-00186-07-FP
PROJECT # HPP-0555(001)
JOB # C-98-328-06
ST. CLAIR COUNTY

F.A.U. RTE.	SECTION	COUNTY	TOTAL SHEETS	SHEET NO.
9182	05-00186-07-FP	ST CLAIR	47	1
FED. ROAD DIST. NO. 8 ILLINOIS		FED. AID PROJECT		
CONTRACT NO. 97386				

INDEX OF SHEETS

- 1 COVER SHEET
- 2 GENERAL NOTES AND SUMMARY OF QUANTITIES
- 3-4 TYPICAL SECTIONS
- 5-6 SCHEDULE OF QUANTITIES
- 7-32 PLAN AND PROFILE SHEETS
- 33-46 PAVEMENT MARKING DETAIL SHEETS
- 47 DETAILS

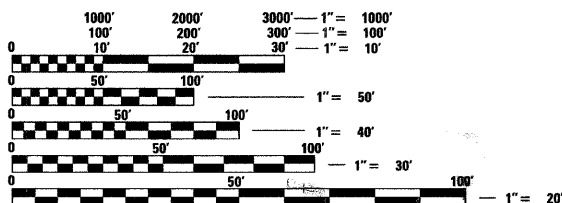
STANDARDS

000001-05	701301-03	701801-04
001006	701311-03	701901-01
424001-05	701601-06	780001-02
442201-03	701606-06	886001-01
606001-04	701701-06	886006-01

UTILITY OWNERS

SEE SHEET 2 GENERAL NOTES

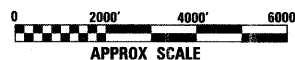
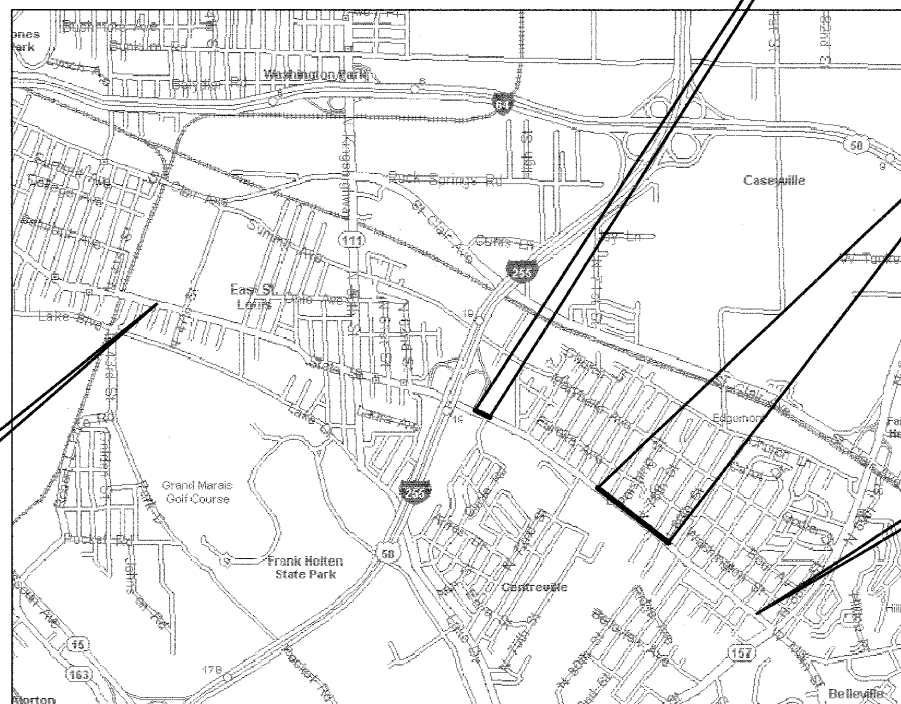
**SCALES USED FOR
VARIOUS PLAN SHEETS**



FULL SIZE PLANS HAVE BEEN PREPARED USING STANDARD ENGINEERING SCALES. REDUCED SIZED PLANS WILL NOT CONFORM TO STANDARD SCALES. IN MAKING MEASUREMENTS ON REDUCED PLANS, THE ABOVE SCALES MAY BE USED.

J.U.L.I.E.
JOINT UTILITY LOCATION INFORMATION FOR EXCAVATION
1-800-892-0123

BEGIN CONSTRUCTION
STA. 100+85.00



LOCATION MAP

PAVEMENT OMISSION
STA. 175+28.21 TO STA 176+30.00

PAVEMENT OMISSION
STA. 206+50.00 TO STA 226+00.00

END CONSTRUCTION
STA. 251+00.00

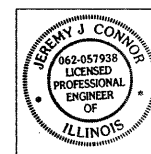
TOTAL LENGTH OF SECTION 12,963.21 FEET = 2.455 MILES

DESIGN SPEED
URBAN 35 MPH

ROADWAY DESIGN DESIGNATION

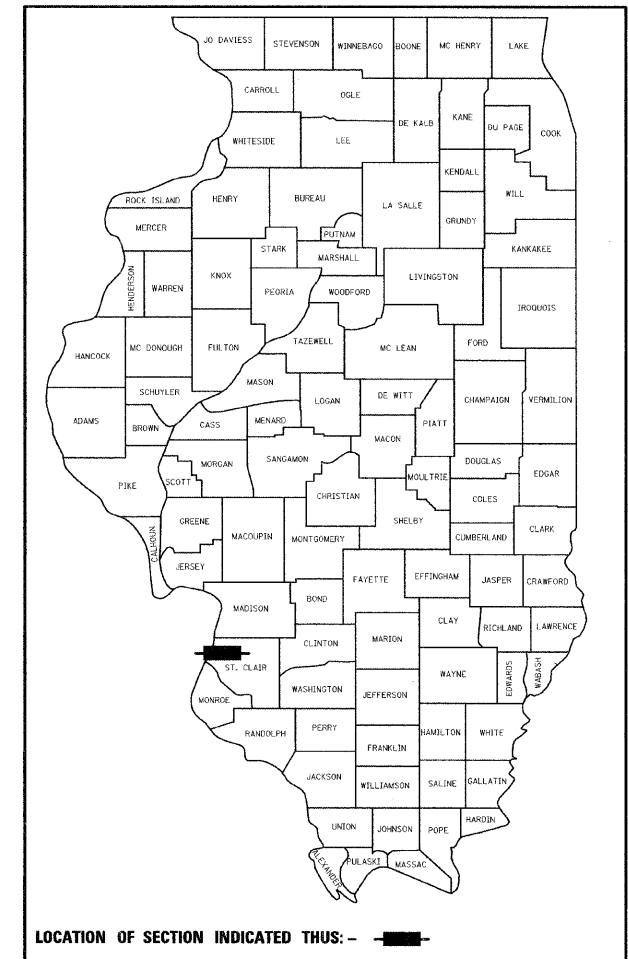
MINOR ARTERIAL

DESIGN TRAFFIC
2009 ADT 12,468
2029 ADT 13,775



HURST-ROSCHÉ ENGINEERS, INC
CONSULTING ENGINEERS
EAST ST LOUIS, ILLINOIS

Jeremy J. Connor
ILL PE 062-057938 JEREMY J. CONNOR DATE 05/23/09
LICENSE EXPIRES 11/30/2009



LOCATION OF SECTION INDICATED THUS: - [black rectangle] -

APPROVED May 28 2009
Alvin L. Parks Jr.
ALVIN L. PARKS, JR., MAYOR, CITY OF EAST ST. LOUIS

PASSED 6/1 2009
[Signature]
DISTRICT 8 ENGINEER OF LOCAL ROADS AND STREETS

APPROVED 6/1 2009
Mary C. Lamie
MARY C. LAMIE, P.E.
DEPUTY DIRECTOR OF HIGHWAYS
REGION FIVE ENGINEER
STATE OF ILLINOIS
DEPARTMENT OF TRANSPORTATION

**PRINTED BY THE AUTHORITY
OF THE STATE OF ILLINOIS**