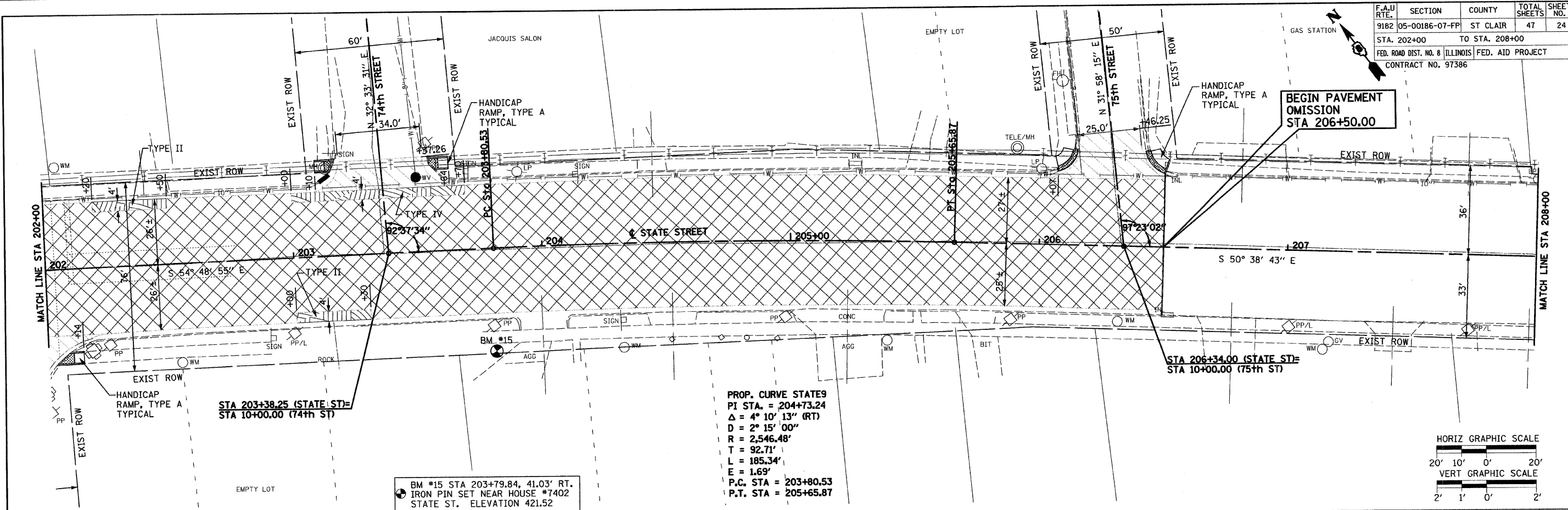
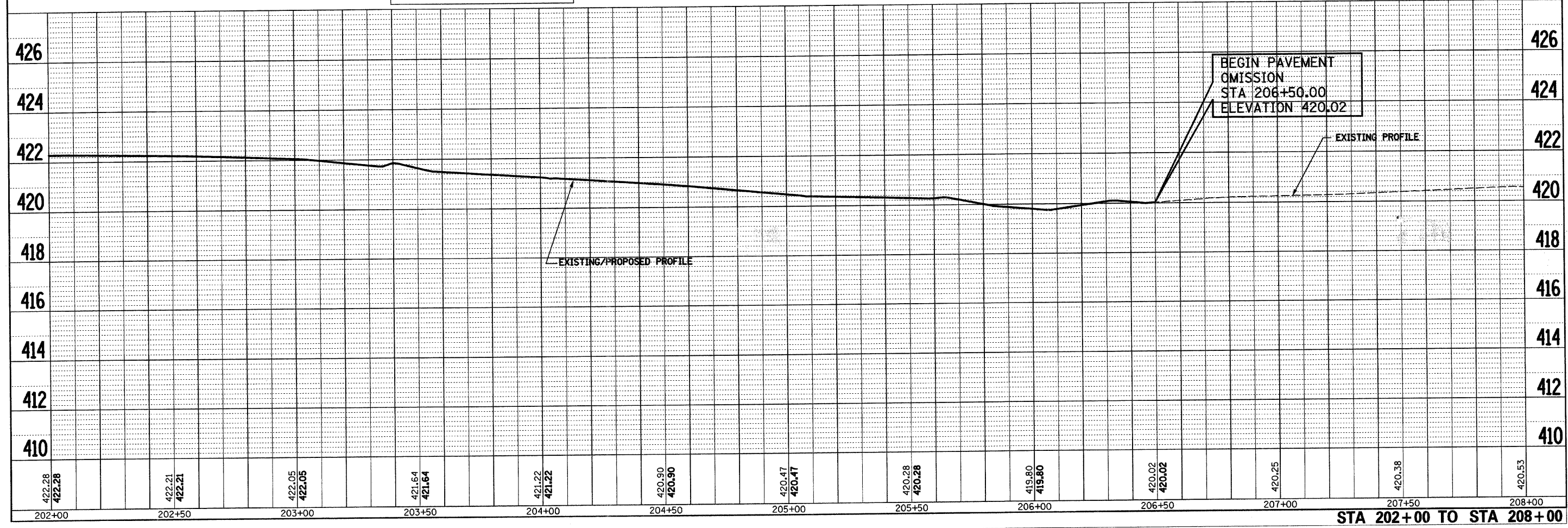
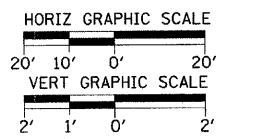


F.A.U. RTE.	SECTION	COUNTY	TOTAL SHEETS	SHEET NO.
9182	05-00186-07-PP	ST CLAIR	47	24
STA. 202+00		TO STA. 208+00		
FED. ROAD DIST. NO. 8		ILLINOIS FED. AID PROJECT		
CONTRACT NO. 97386				



PROP. CURVE STATE9  
 PI STA. = 204+73.24  
 $\Delta = 4^\circ 10' 13''$  (RT)  
 D = 2' 15" 00"  
 R = 2,546.48'  
 T = 92.71'  
 L = 185.34'  
 E = 1.69'  
 P.C. STA = 203+80.53  
 P.T. STA = 205+65.87

BM #15 STA 203+79.84, 41.03' RT.  
 IRON PIN SET NEAR HOUSE #7402  
 STATE ST. ELEVATION 421.52



STA 202+00 TO STA 208+00