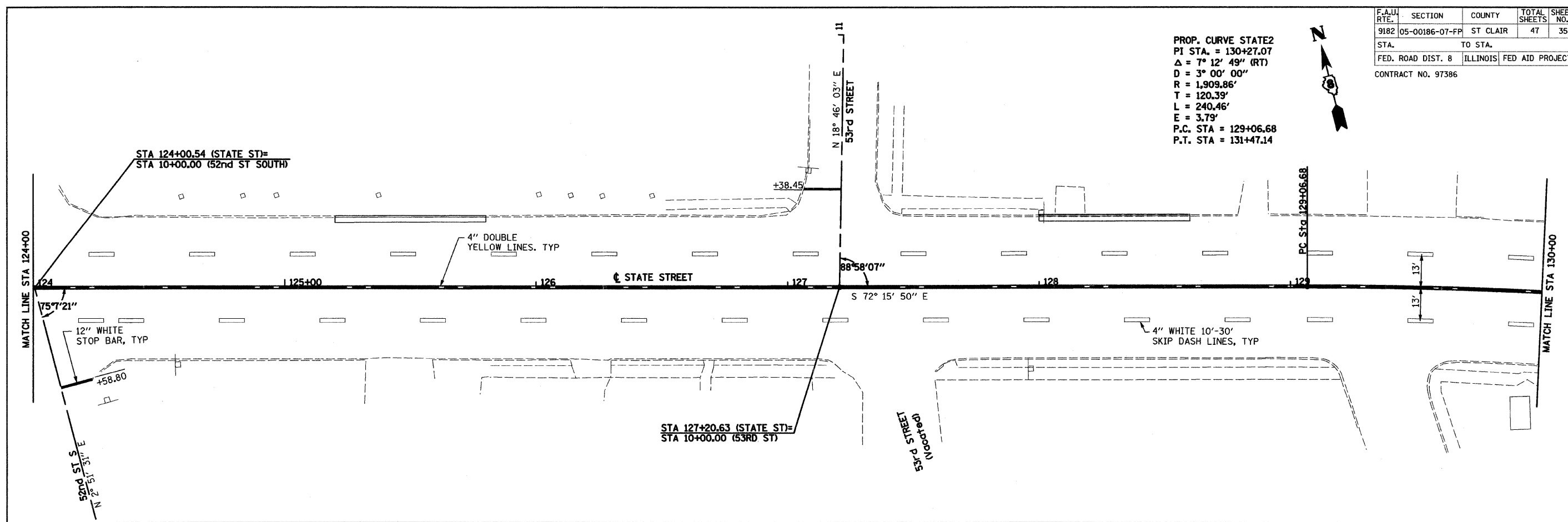


F.A.U. RTE.	SECTION	COUNTY	TOTAL SHEETS	SHEET NO.
9182	05-00186-07-FP	ST CLAIR	47	35
STA.		TO STA.		
FED. ROAD DIST. 8		ILLINOIS FED AID PROJECT		
CONTRACT NO. 97386				

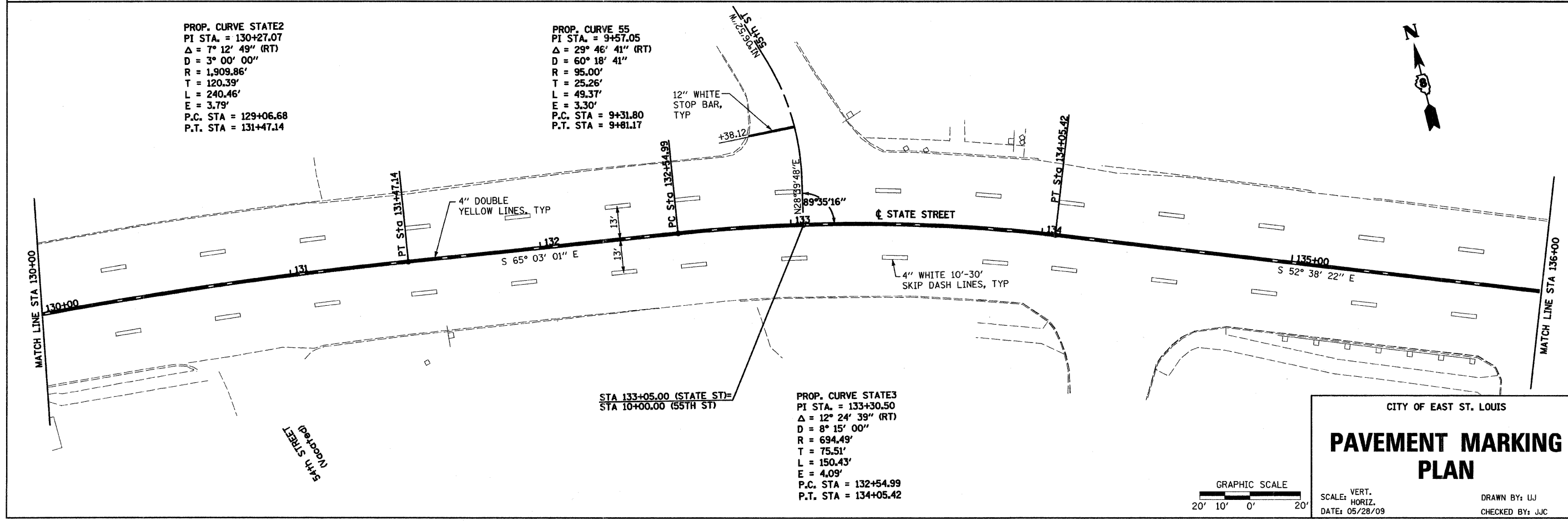
PROP. CURVE STATE2
 PI STA. = 130+27.07
 $\Delta = 7^\circ 12' 49''$ (RT)
 $D = 3^\circ 00' 00''$
 $R = 1,909.86'$
 $T = 120.39'$
 $L = 240.46'$
 $E = 3.79'$
 P.C. STA = 129+06.68
 P.T. STA = 131+47.14



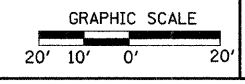
PROP. CURVE STATE2
 PI STA. = 130+27.07
 $\Delta = 7^\circ 12' 49''$ (RT)
 $D = 3^\circ 00' 00''$
 $R = 1,909.86'$
 $T = 120.39'$
 $L = 240.46'$
 $E = 3.79'$
 P.C. STA = 129+06.68
 P.T. STA = 131+47.14

PROP. CURVE 55
 PI STA. = 9+57.05
 $\Delta = 29^\circ 46' 41''$ (RT)
 $D = 60^\circ 18' 41''$
 $R = 95.00'$
 $T = 25.26'$
 $L = 49.37'$
 $E = 3.30'$
 P.C. STA = 9+31.80
 P.T. STA = 9+81.17

PROP. CURVE STATE3
 PI STA. = 133+30.50
 $\Delta = 12^\circ 24' 39''$ (RT)
 $D = 8^\circ 15' 00''$
 $R = 694.49'$
 $T = 75.51'$
 $L = 150.43'$
 $E = 4.09'$
 P.C. STA = 132+54.99
 P.T. STA = 134+05.42



CITY OF EAST ST. LOUIS
PAVEMENT MARKING PLAN



SCALE: VERT. DATE: 05/28/09
 DRAWN BY: UJ
 CHECKED BY: JUC