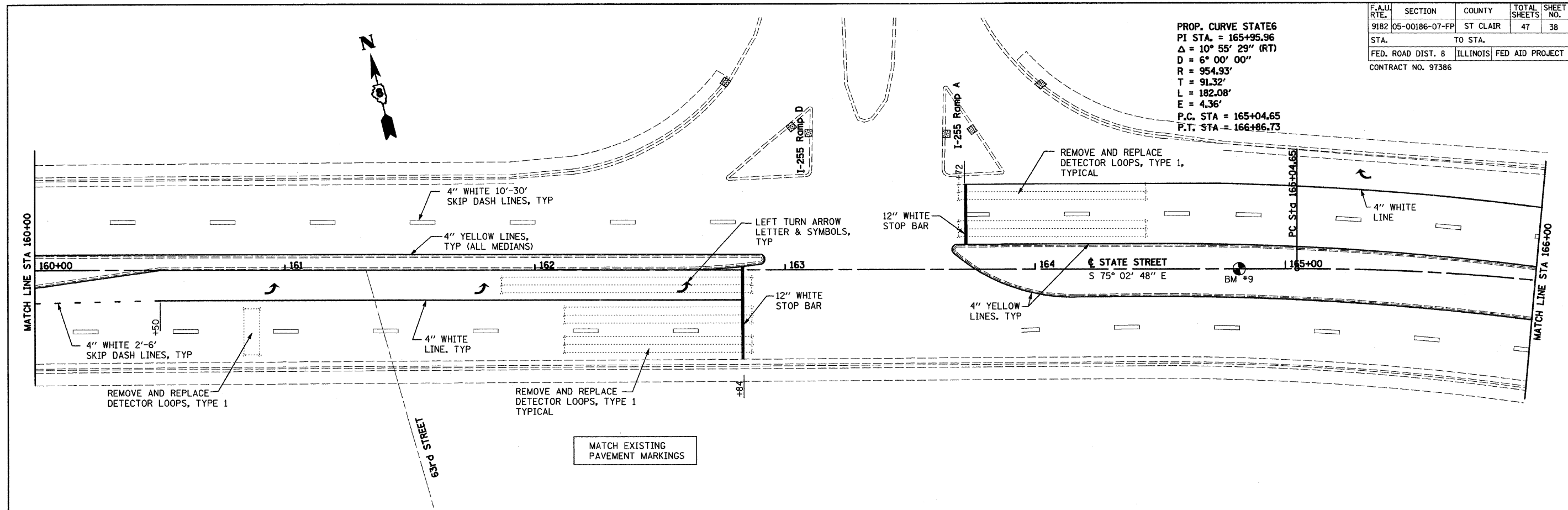
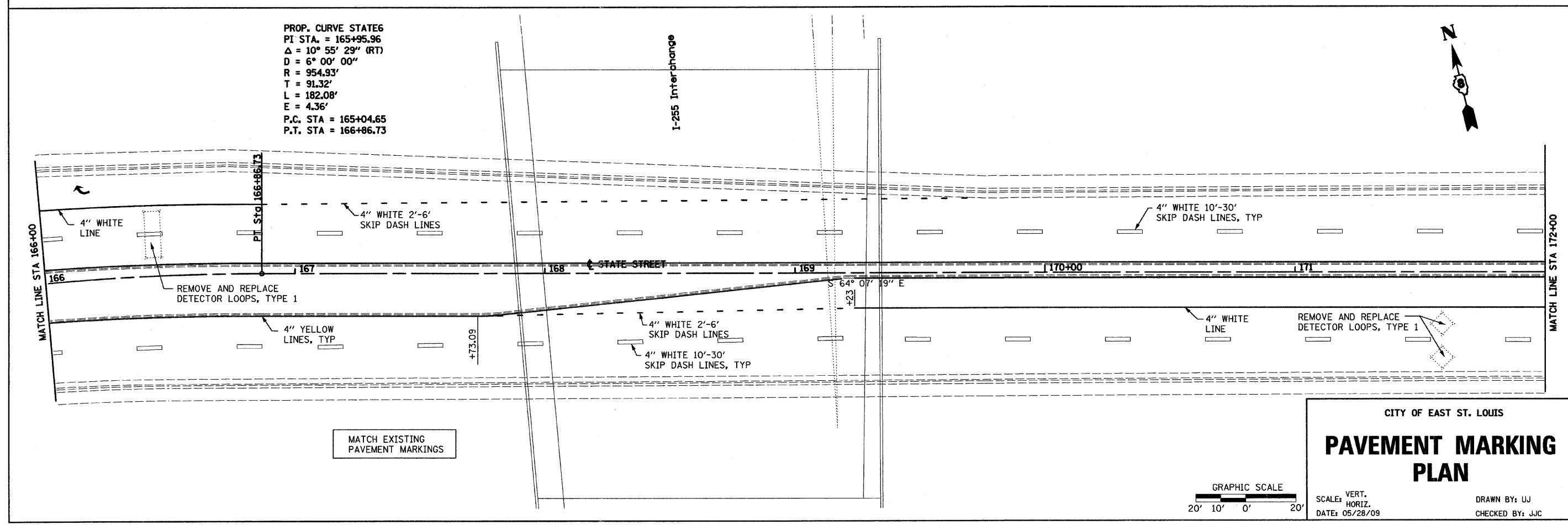


F.A.U. RTE.	SECTION	COUNTY	TOTAL SHEETS	SHEET NO.
9182	05-00186-07-FP	ST CLAIR	47	38
STA.		TO STA.		
FED. ROAD DIST. 8		ILLINOIS FED AID PROJECT		
CONTRACT NO. 97386				

PROP. CURVE STATE6
 PI STA. = 165+95.96
 $\Delta = 10^\circ 55' 29''$ (RT)
 $D = 6^\circ 00' 00''$
 $R = 954.93'$
 $T = 91.32'$
 $L = 182.08'$
 $E = 4.36'$
 P.C. STA = 165+04.65
 P.T. STA = 166+86.73



PROP. CURVE STATE6
 PI STA. = 165+95.96
 $\Delta = 10^\circ 55' 29''$ (RT)
 $D = 6^\circ 00' 00''$
 $R = 954.93'$
 $T = 91.32'$
 $L = 182.08'$
 $E = 4.36'$
 P.C. STA = 165+04.65
 P.T. STA = 166+86.73



CITY OF EAST ST. LOUIS

PAVEMENT MARKING PLAN

SCALE: VERT. DATE: 05/28/09
 HORIZ. DRAWN BY: UJ
 CHECKED BY: JJC