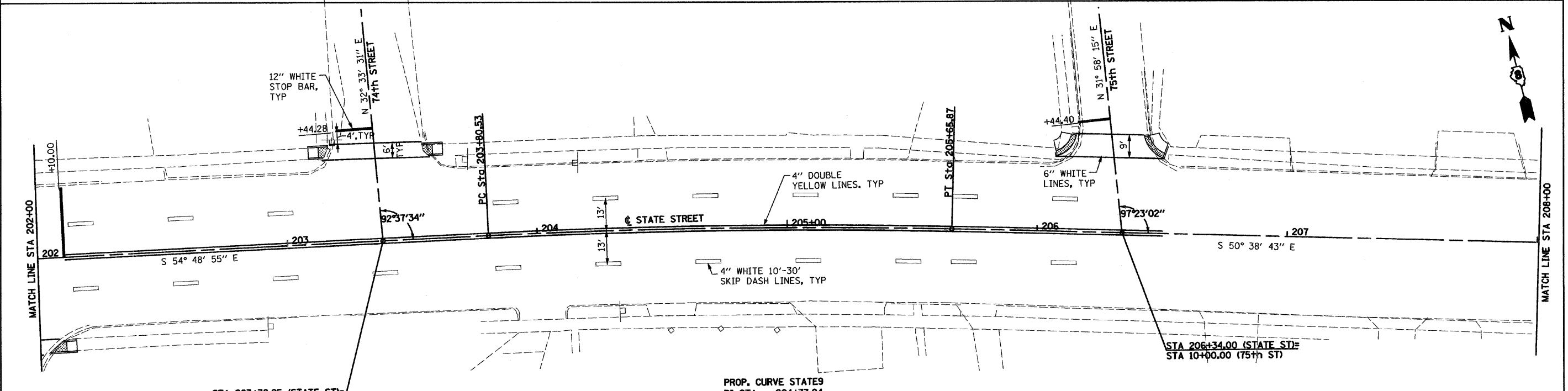
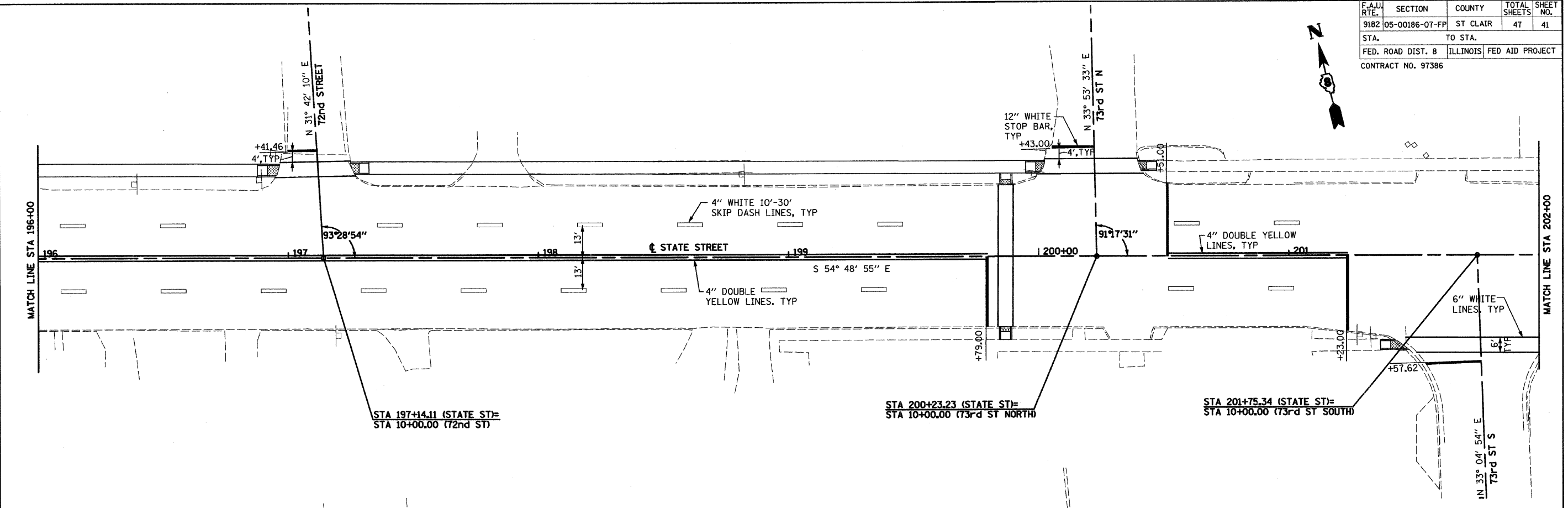


F.A.U. RTE.	SECTION	COUNTY	TOTAL SHEETS	SHEET NO.
9182	05-00186-07-FP	ST CLAIR	47	41
STA.		TO STA.		
FED. ROAD DIST. 8		ILLINOIS FED AID PROJECT		
CONTRACT NO. 97386				



PROP. CURVE STATES
 PI STA. = 204+73.24
 Δ = 4° 10' 13" (RT)
 D = 2° 15' 00"
 R = 2,546.48'
 T = 92.71'
 L = 185.34'
 E = 1.69'
 P.C. STA = 203+80.53
 P.T. STA = 205+65.87

CITY OF EAST ST. LOUIS

PAVEMENT MARKING PLAN

SCALE: VERT. _____
 HORIZ. _____
 DATE: 05/28/09

DRAWN BY: UJ
 CHECKED BY: JJC

