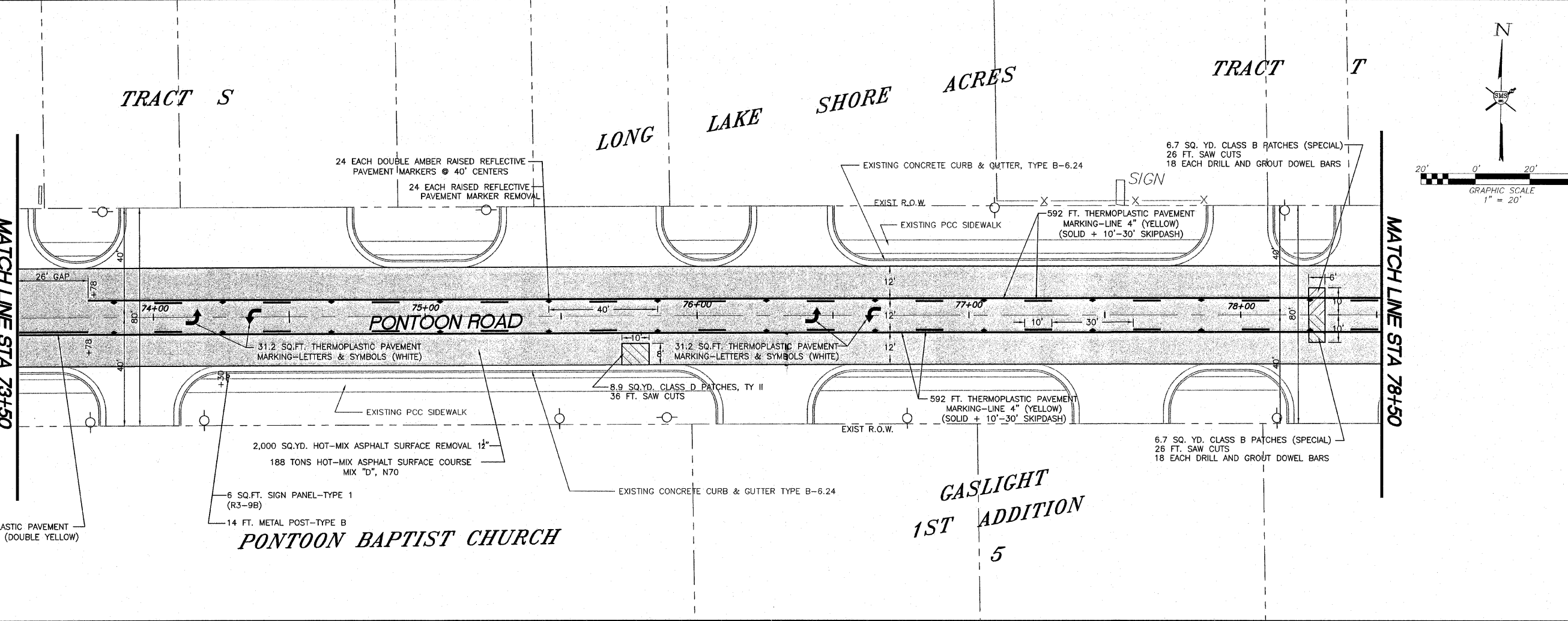


REVISIONS

SMS Sheppard, Morgan & Schwaab, Inc.
 CONSULTING ENGINEERS AND LAND SURVEYORS
 215 Harner Street, P.O. Box E, Alton, IL 62002-6184/62-9735 - E-mail: sms@sms.com
 10 Central Industrial Drive Suite 3, Granite City, IL 62040 618371-8700 E-mail: smsg@sms.com

VILLAGE OF PONTOON BEACH
 PONTOON ROAD RESURFACING PROJECT
 SECTION 09-00006-01-RS
 PLAN SHEET



GASLIGHT
1ST ADDITION
 5

OVERLAY PPT.DWG	PG.
REF. BK.	
JOB NO. 266059	
DSN. BY: JHH	
DWN. BY: JCP	
CHK. BY: JHH	
DATE: FEBRUARY, 2009	
SCALE: 1" = 20'	
SHEET 3 OF 5	