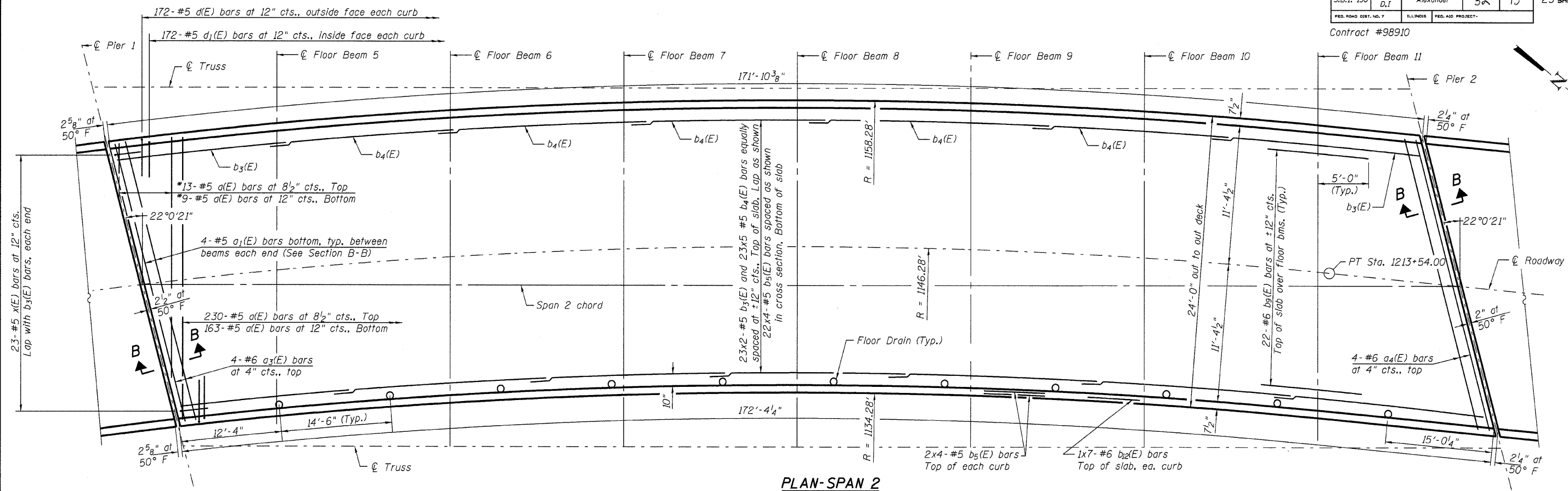


Contract #98910



**PLAN-SPAN 2**

\*Order a(E) bars full length. Cut to fit skew and use remainder in opposite end.

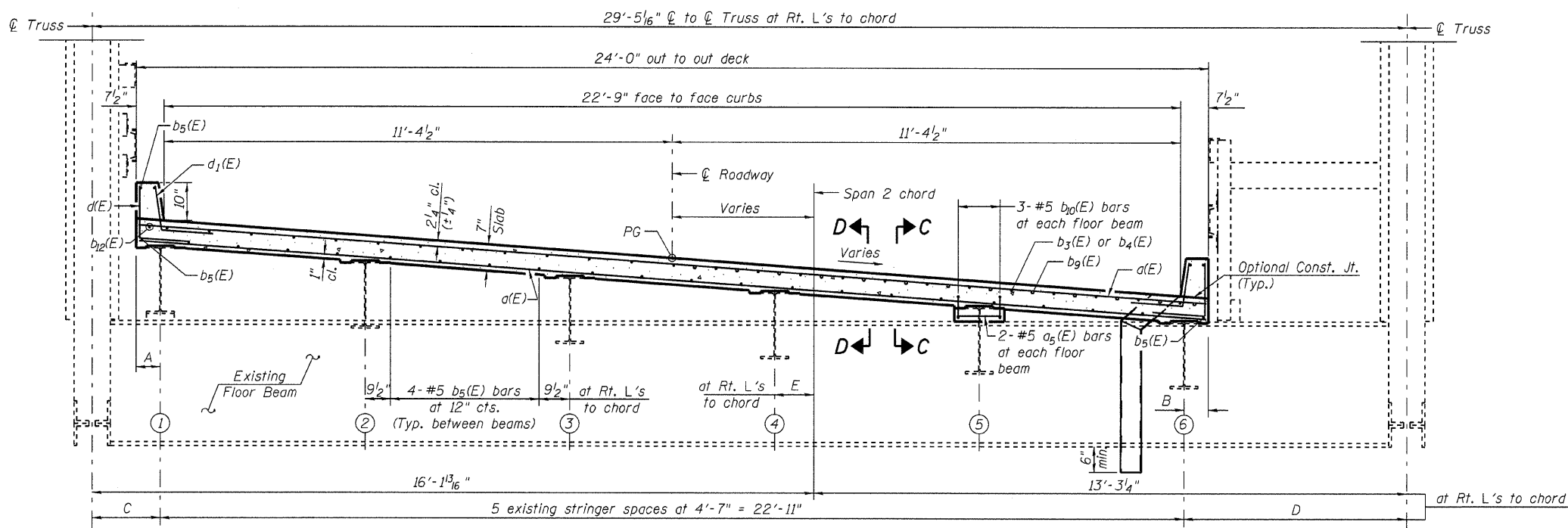
**MIN. BAR LAP**

#5 bar = 1'-8"  
#6 bar = 2'-0"

**DIMENSIONS**  
(at Rt. L's to chord)

Location	A	B	C	D	E
☐ Pier 1	4"	8 3/4"	4'-9 1/16"	2'-3 3/4"	-2'-0 7/16"
Floor Beam 5	3 7/8"	9 5/8"	3'-2 3/8"	3'-3 1/4"	-10"
Floor Beam 6	6 1/2"	6 3/4"	2'-4 1/2"	4'-1 9/16"	5 1/8"
Floor Beam 7	4"	9 1/8"	1'-6 3/8"	4'-11 1/4"	10 1/2"
Floor Beam 8	6 9/16"	6 1/8"	1'-6 3/8"	4'-11 3/4"	10 1/2"
Floor Beam 9	3 7/8"	9 3/8"	1'-6 3/8"	4'-11 3/4"	10 1/2"
Floor Beam 10	6 1/2"	6 3/4"	2'-4 1/2"	4'-1 9/16"	5 1/8"
Floor Beam 11	3 7/8"	9 5/8"	3'-3 3/8"	3'-2 3/8"	-10 3/8"
☐ Pier 2	4"	9 7/8"	4'-1 9/16"	1'-9 1/16"	-2'-1 9/16"

Notes:  
All longitudinal dimensions are measured along inside face of curb.  
All transverse dimensions are measured along radii, unless otherwise shown.  
See Sheet 10 of 23 for superstructure details and Bill of Material.  
See Sheet 10 of 23 for Sections B-B, C-C and D-D.  
Bars indicated thus 2x4-#5 etc. indicates 2 lines of bars with 4 lengths per line.



**CROSS SECTION**  
(Looking North)

ILLINOIS DEPARTMENT OF TRANSPORTATION  
**SUPERSTRUCTURE - SPAN 2**  
OLD ILLINOIS ROUTE 3  
OVER SEXTON CREEK  
S.B.I. ROUTE 150 - SECTION (133A)D,I  
ALEXANDER COUNTY  
STATION 1212+84.95  
STRUCTURE NO. 002-0009

**LE** LIN ENGINEERING, LTD.  
Consulting Engineers  
Chatham, Illinois

Designed By: DLS    Checked By: STD    Drawn By: AJF  
Date: Feb 2009    File: 002-0009.dgn

3/11/2009 11:47:56 AM ... \2009 revisions\002-0009.dgn