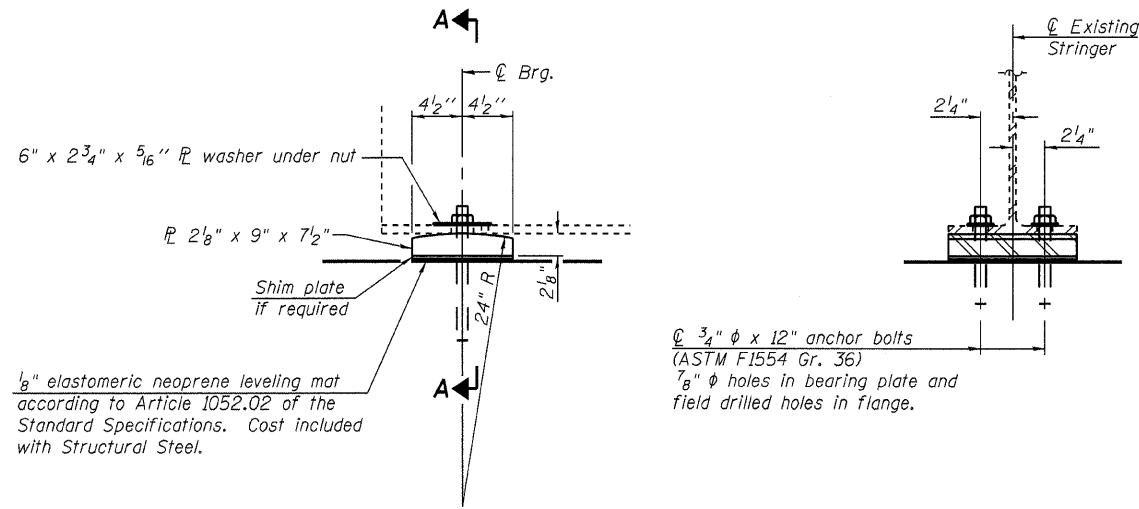


Contract #98910

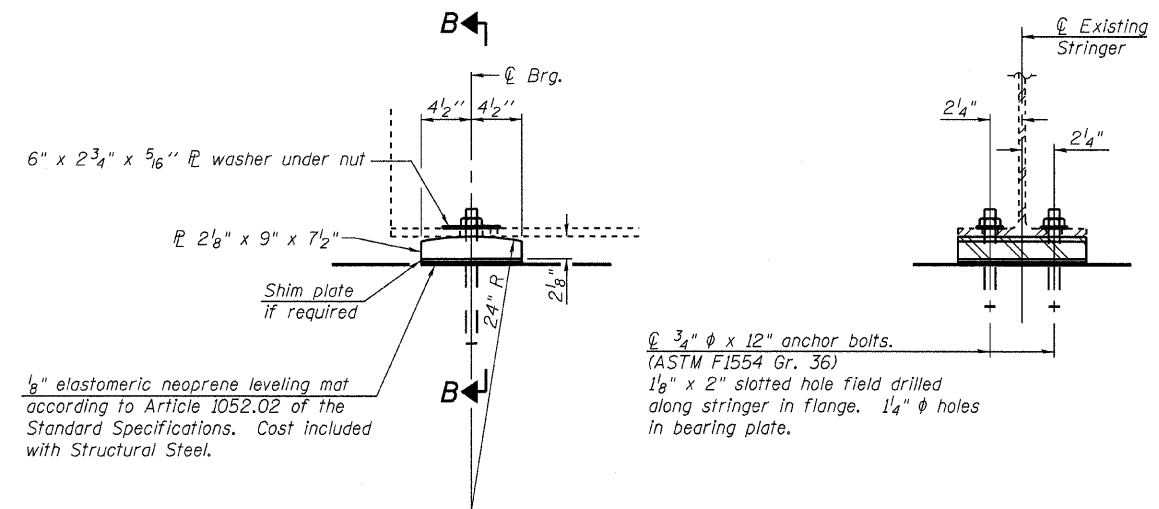


ELEVATION

SECTION A-A

FIXED BEARINGS - AT ABUTMENTS & SOUTH BEARING OF PIER 2

(18 - Required)

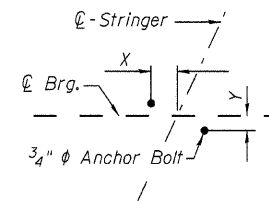


ELEVATION

SECTION B-B

EXPANSION BEARINGS - AT PIER 1 & NORTH BEARING OF PIER 2

(18 - Required)



ANCHOR BOLT LOCATION

| | X | Y |
|----------------|--------|--------|
| S. Abutment | 2 1/8" | 5 3/8" |
| S. Brg. Pier 1 | 2 1/8" | 5 3/8" |
| N. Brg. Pier 1 | 2 1/8" | 3 3/4" |
| S. Brg. Pier 2 | 2" | 1" |
| N. Brg. Pier 2 | 2" | 1" |
| N. Abutment | 2" | 1" |

Notes:

Anchor bolts shall be ASTM F1554 all-thread (or an Engineer-approved alternate material) of the grade(s) and diameter(s) specified. ASTM A307 Grade C anchor bolts may be used in lieu of ASTM F1554 Grade 36 (Fy=36ksi). The corresponding specified grade of AASHTO M314 anchor bolts may be used in lieu of ASTM F1554.

Anchor bolts may be either cast in place or installed in holes drilled after the supported member is in place.

Drilled and set anchor bolts shall be installed according to Article 521.06 of the Standard Specifications.

Cost of all steel plates, shim plates, field drilling, and field welding & grinding for stringer bearings shall be included with Structural Steel Repair.

Cost of temporary support of existing stringers during bearing installation is included with Jack and Remove Existing Bearings. See Sheet 13 of 23.

All bearing plates shall be placed perpendicular to stringers.

BILL OF MATERIAL

| Item | Unit | Total |
|---------------------|------|-------|
| Anchor Bolts 3/4" φ | Each | 72 |

ILLINOIS DEPARTMENT OF TRANSPORTATION
STRINGER BEARING DETAILS
 OLD ILLINOIS ROUTE 3
 OVER SEXTON CREEK
 S.B.I. ROUTE 150 - SECTION (133A)D,I
 ALEXANDER COUNTY
 STATION 1212+84.95
 STRUCTURE NO. 002-0009

LE LIN ENGINEERING, LTD.
 Consulting Engineers
 Chatham, Illinois
 Designed By: DLS Checked By: STG Drawn By: AJF
 Date: Feb 2009 File: 002-0009.dgn