

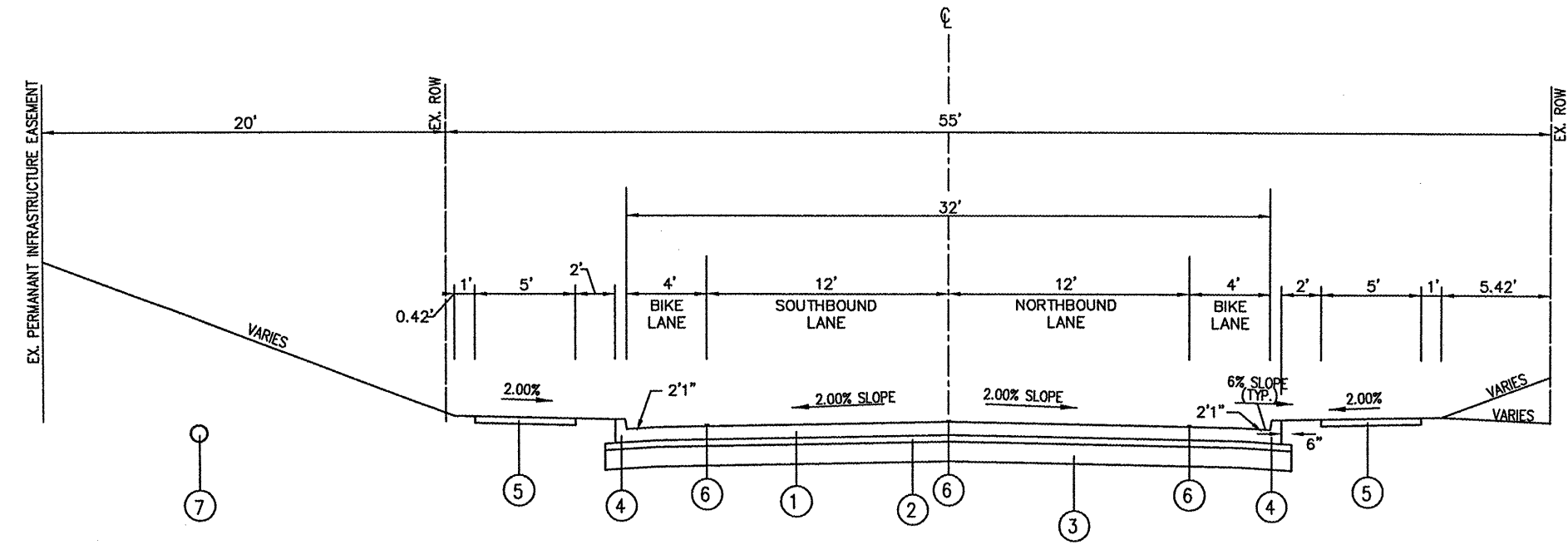
FAU ROUTE	SECTION	COUNTY
9723	09-00123-00-FP	JACKSON
FEDERAL AID PROJECT		ILLINOIS

THOUVENOT, WADE & MOERCHEN, INC.
ENGINEERS • SURVEYORS • PLANNERS



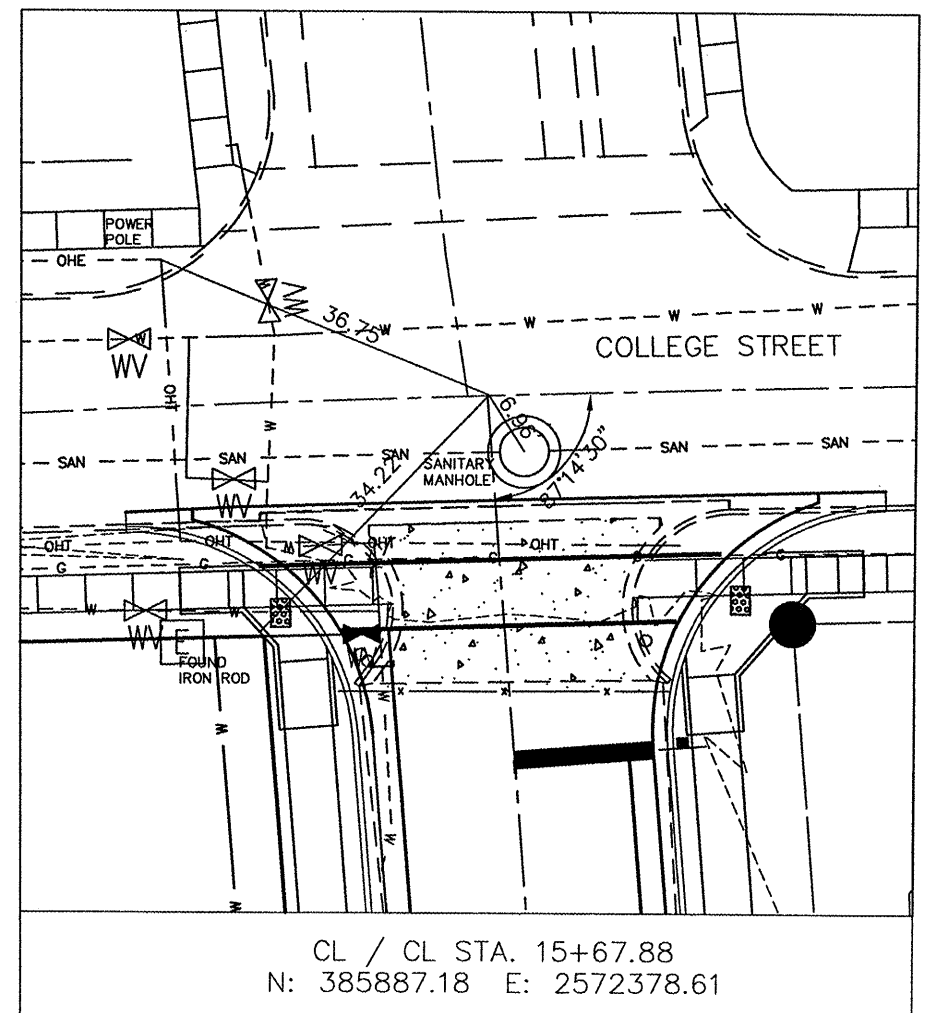
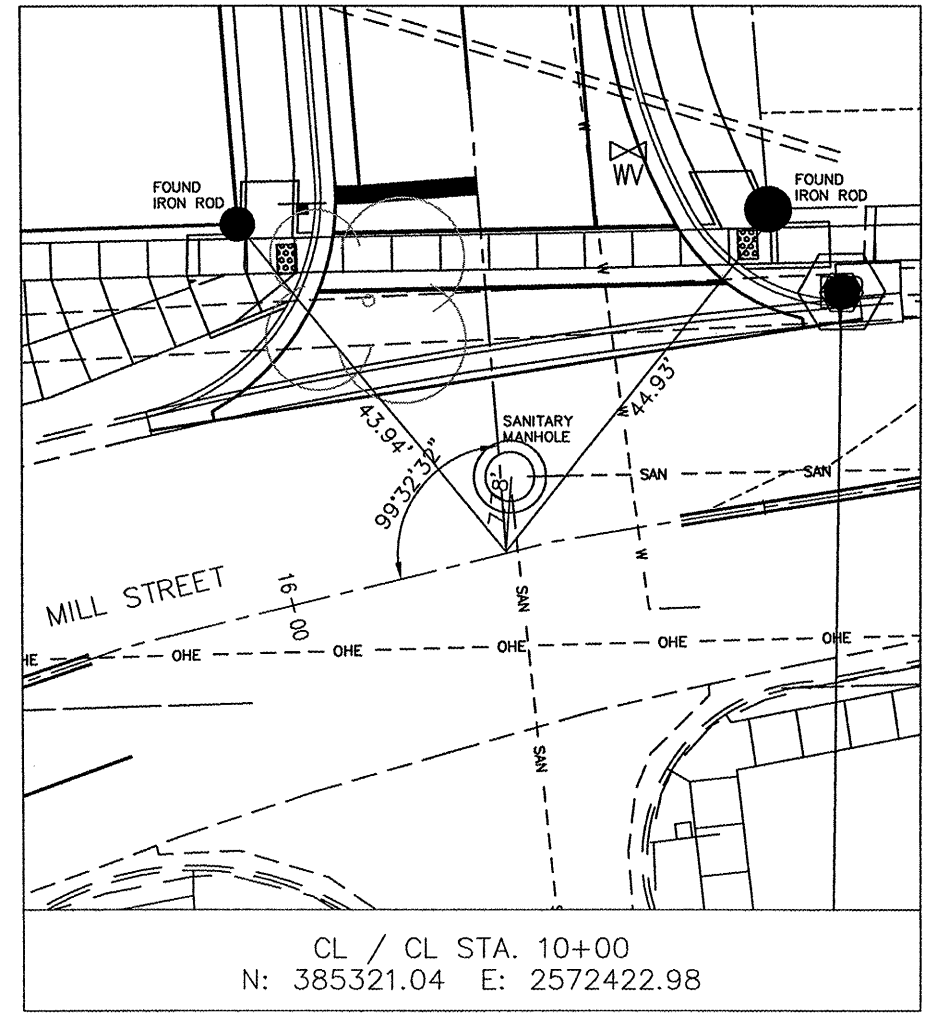
- CORPORATE OFFICE**
4940 OLD COLLINSVILLE RD.
SWANSEA, ILLINOIS 62226
TEL (618) 624-4488
FAX (618) 624-6688
info@twm-inc.com
- CARBONDALE OFFICE**
206 WEST COLLEGE STREET
CARBONDALE, ILLINOIS 62901
TEL (618) 549-8844
FAX (618) 549-8450
info@twm-inc.com
- EDWARDSVILLE OFFICE**
1015B CENTURY DRIVE
EDWARDSVILLE, ILLINOIS 62025
TEL (618) 656-4040
FAX (618) 656-4343
info@twm-inc.com
- ST. CHARLES OFFICE**
400 NORTH 5TH ST., SUITE 101
ST. CHARLES, MISSOURI 63301
TEL (636) 724-8300
FAX (636) 724-8304
info@twm-inc.com
- WATERLOO OFFICE**
113 SOUTH MAIN STREET
WATERLOO, ILLINOIS 62298
TEL (618) 939-5050
FAX (618) 939-3938
info@twm-inc.com

PROFESSIONAL REGISTRATIONS	LICENSE NO.
ILLINOIS PROFESSIONAL DESIGN FIRM	184-001220
PROFESSIONAL ENGINEERING CORP.	61-035370
PROFESSIONAL STRUCTURAL ENGR. CORP.	81-005202
ILLINOIS PROF. LAND SURVEYING CORP.	048-000029
MISSOURI PROFESSIONAL ENGR. CORP.	MC 001528
MISSOURI LAND SURVEYING CORP.	MC 000346



- ① PCC CONCRETE PAVEMENT 8" (SPECIAL) WITH INTEGRAL CURB
- ② SUB-BASE GRANULAR MATERIAL, TYPE A 4"
- ③ LIME MODIFIED SOIL, 12"
- ④ B-6.18 CURB AND GUTTER (TO BE POURED MONOLITHICALLY)
- ⑤ PCC SIDEWALK, 4"
- ⑥ PAVEMENT MARKING
- ⑦ 10" DUCTILE IRON WATER MAIN

**SOUTH MARION STREET
PROPOSED TYPICAL SECTION
STA. 10+00 - STA. 15+67.88**



TYPICAL SECTION AND ALIGNMENT TIES

**SOUTH MARION STREET
CITY OF CARBONDALE
JACKSON COUNTY, ILLINOIS**

REV.	DATE	DESCRIPTION

PLAN STATUS: **FINAL**

ISSUED FOR REVIEW ISSUED FOR BIDDING
 ISSUED FOR CONSTR. RECORD DRAWING

DRAWN BY: JJV SHEET: **7**
DESIGNED BY: JJV OF 24 SHEETS
CHECKED BY: SJK
APPROVED BY: JJV PROJECT DESCRIPTION
PROJECT NUMBER: T06090142