

| | | |
|---------------------|----------------|----------|
| FW ROUTE | SECTION | COUNTY |
| 9723 | 09-00123-00-FP | JACKSON |
| FEDERAL AID PROJECT | | ILLINOIS |

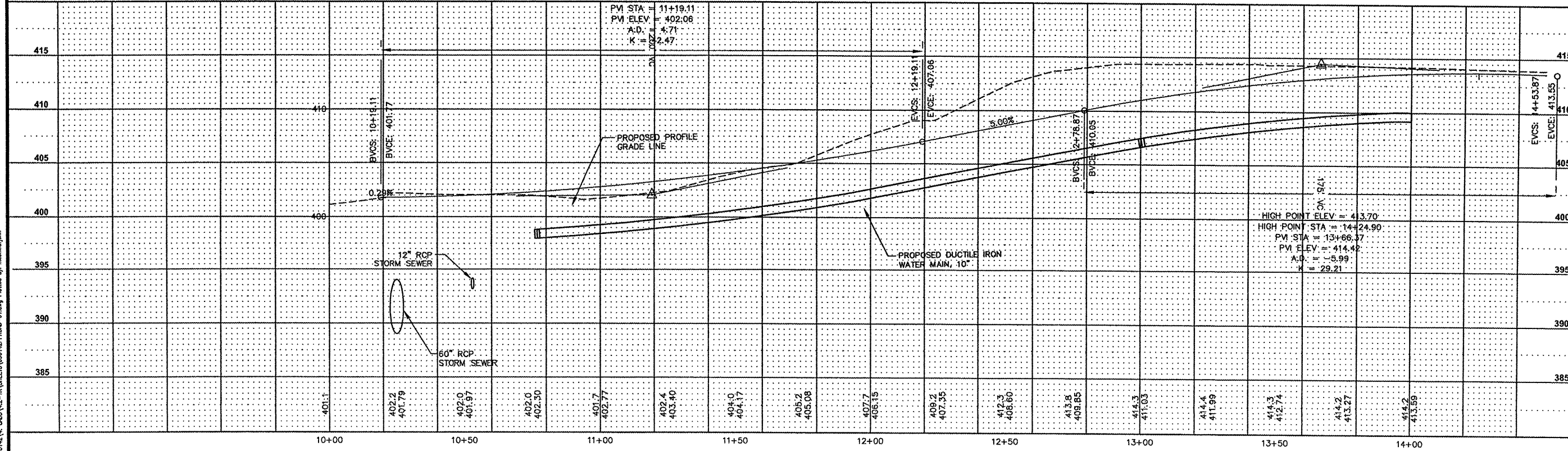
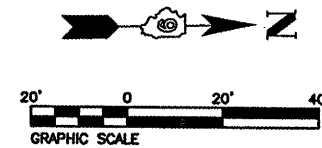
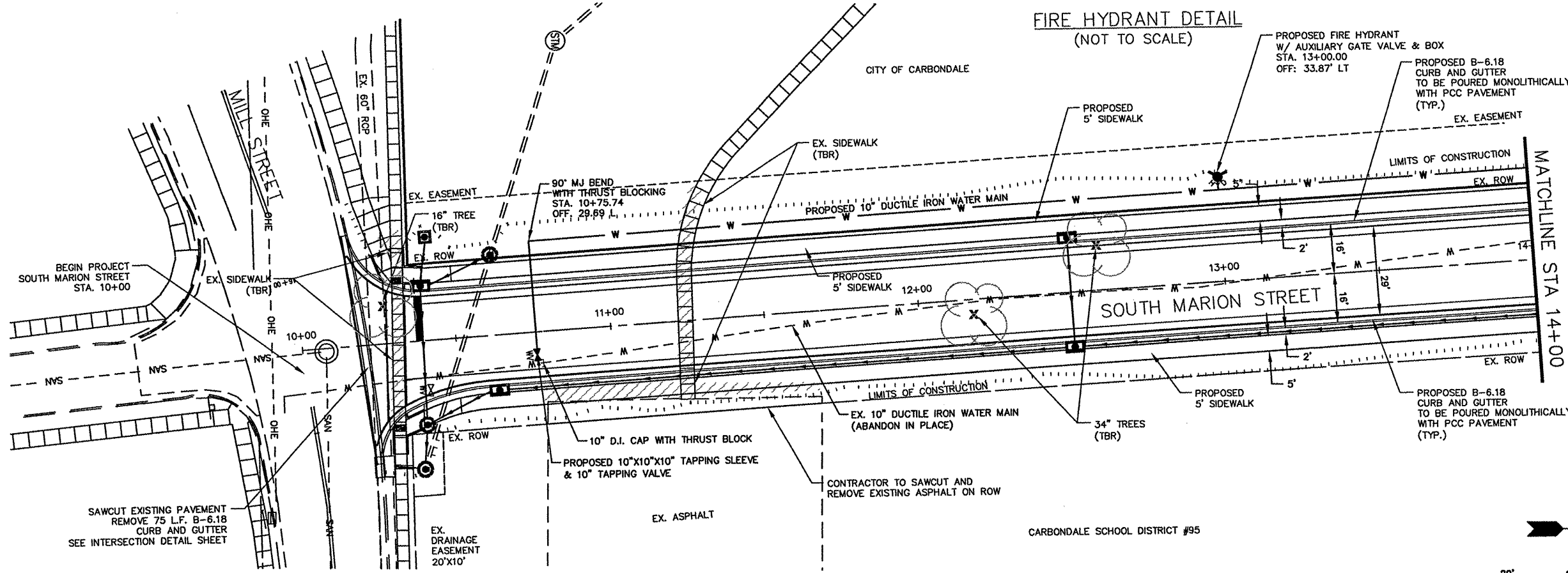
CONTRACT NO. 99378

THOUVENOT, WADE & MOERCHEN, INC.
ENGINEERS • SURVEYORS • PLANNERS



- CORPORATE OFFICE**
4940 OLD COLLINGSVILLE RD.
SWANSEA, ILLINOIS 62226
TEL (618) 624-4488
FAX (618) 624-6688
info@twm-inc.com
- CARBONDALE OFFICE**
206 WEST COLLEGE STREET
CARBONDALE, ILLINOIS 62901
TEL (618) 549-8450
FAX (618) 549-8450
info@twm-inc.com
- EDWARDSVILLE OFFICE**
10158 CENTURY DRIVE
EDWARDSVILLE, ILLINOIS 62025
TEL (618) 656-4040
FAX (618) 656-4343
info@twm-inc.com
- ST. CHARLES OFFICE**
400 NORTH 5TH ST., SUITE 101
ST. CHARLES, MISSOURI 63301
TEL (636) 724-8300
FAX (636) 724-8304
info@twm-inc.com
- WATERLOO OFFICE**
113 SOUTH MAIN STREET
WATERLOO, ILLINOIS 62298
TEL (618) 939-5050
FAX (618) 939-3938
info@twm-inc.com

| PROFESSIONAL REGISTRATIONS | LICENSE NO. |
|-------------------------------------|-------------|
| ILLINOIS PROFESSIONAL DESIGN FIRM | 184-001220 |
| PROFESSIONAL ENGINEERING CORP. | 62-035370 |
| PROFESSIONAL STRUCTURAL ENGR. CORP. | 61-005202 |
| ILLINOIS PROF. LAND SURVEYING CORP. | 048-000028 |
| MISSOURI PROFESSIONAL ENGR. CORP. | NC 001528 |
| MISSOURI LAND SURVEYING CORP. | NC 000348 |



PLAN AND PROFILE
STA. 10+00 TO STA. 14+00
SOUTH MARION STREET
CITY OF CARBONDALE
JACKSON COUNTY, ILLINOIS

| REV. | DATE | DESCRIPTION |
|------|------|-------------|
| | | |
| | | |
| | | |

PLAN STATUS: **FINAL**

ISSUED FOR REVIEW ISSUED FOR BIDDING
 ISSUED FOR CONSTR. RECORD DRAWING

DRAWN BY: JUV SHEET
DESIGNED BY: JUV **8**
CHECKED BY: SJK OF 24 SHEETS
APPROVED BY: JUV PROJECT DESCRIPTION
PROJECT NUMBER: T06090142

P:\090142\090142-PPROAD-01.dwg 5/27/2009 8:29am