

RTE.	SECTION	COUNTY	TOTAL SHEETS	SHEET NO.
	09-00043-00-R5	MASSAC	4	1

CONTRACT #99392

STATE OF ILLINOIS
DEPARTMENT OF TRANSPORTATION
DIVISION OF HIGHWAYS

**PLANS FOR PROPOSED
FEDERAL AID SECONDARY PROJECT**

AMERICAN RECOVERY AND REINVESTMENT ACT (ARRA)
FAU9762 & FAU9757
(7th STREET & 19th STREET)
SECTION 09-00043-00-RS
CITY OF METROPOLIS
PROJECT NO. ARA-5045(008)
JOB NO. C-99-554-09



Brian C. Giltner 5/11/09
signature date
November 30, 2009
license expires

INDEX OF SHEETS

1. COVER SHEET
2. SUMMARY OF QUANTITIES AND TYPICAL SECTIONS
3. 7th STREET
4. 19th STREET

SEE PROPOSAL BOOKLET FOR HIGHWAY STANDARDS:

- 000001-05 STANDARD SYMBOLS, ABBREVIATIONS AND PATTERNS
- 701301-03 LANE CLOSURE, 2L, 2W, SHORT TIME OPERATIONS
- 701901-01 TRAFFIC CONTROL DEVICES
- 780001-02 TYPICAL PAVEMENT MARKINGS

SPECIAL PROVISIONS

SUMMARY OF QUANTITIES

NO.	CODE NO.	ITEM	UNIT	QUANTITY
1.	40600100	BITUMINOUS MATERIALS (PRIME COAT)	GALLON	1,673
2.	40603315	HOT-MIX ASPHALT SURFACE COURSE, MIX "C", N70	TON	1,748
3.	44000198	HOT-MIX ASPHALT SURFACE REMOVAL, VARIABLE DEPTH	SQ YD	16,836
4.	67100100	MOBILIZATION	L SUM	1
5.	78000200	THERMOPLASTIC PAVEMENT MARKING - LINE 4"	FOOT	6,709
6.	20042200	PORTLAND CEMENT CONCRETE PAVEMENT SURFACE REMOVAL	SQ YD	90
7.	20048665	RAILROAD PROTECTIVE LIABILITY INSURANCE	L SUM	1

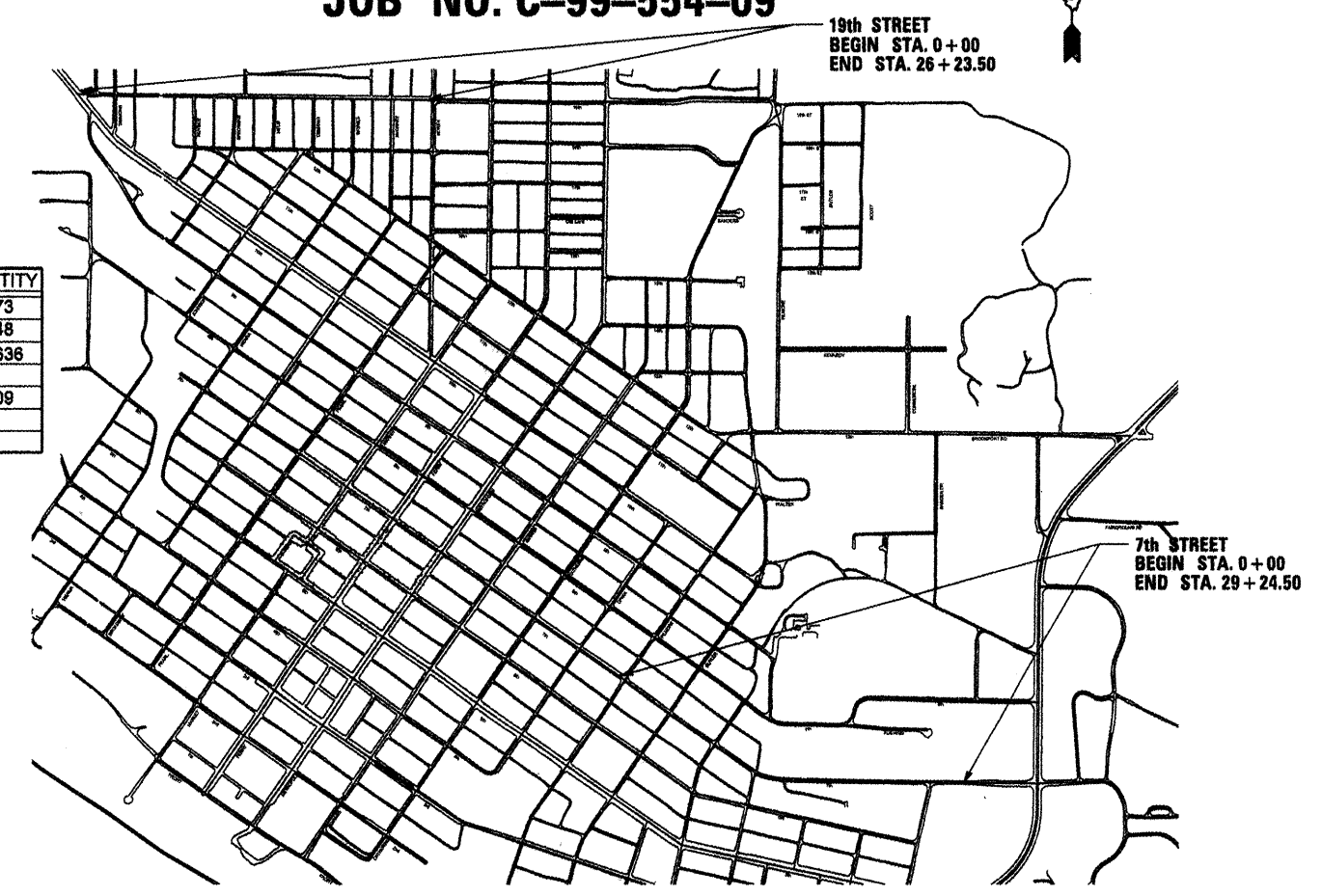
A Specialty Item

DESIGN CLASSIFICATION: URBAN COLLECTOR

ADT: 2,180 (7th Street)
1,930 (19th Street)



J.U.L.I.E.
JOINT UTILITY LOCATION INFORMATION FOR EXCAVATION
1-800-892-0123
OR 811



TOTAL LENGTH OF IMPROVEMENT = 5,548 FEET = 1.05 MILES
NO OMISSIONS
NET LENGTH OF IMPROVEMENT = 5,548 FEET = 1.05 MILES
SCALE = 1" = 140'
DESIGN SPEED = 30 M.P.H.

AGENCY RESPONSIBLE FOR LETTING

APPROVED *Billy W. David* 5/12/09
Date
Mayer
Local Agency, Position

PASSED 5/12/2009
Date
Richard W. Alderman
District #8 Engineer of Local Roads & Streets

RELEASING FOR BID BASED ON LIMITED REVIEW
Date *May 13, 2009*
May C. Adams
Deputy Director of Highways, Region #5 Engineer



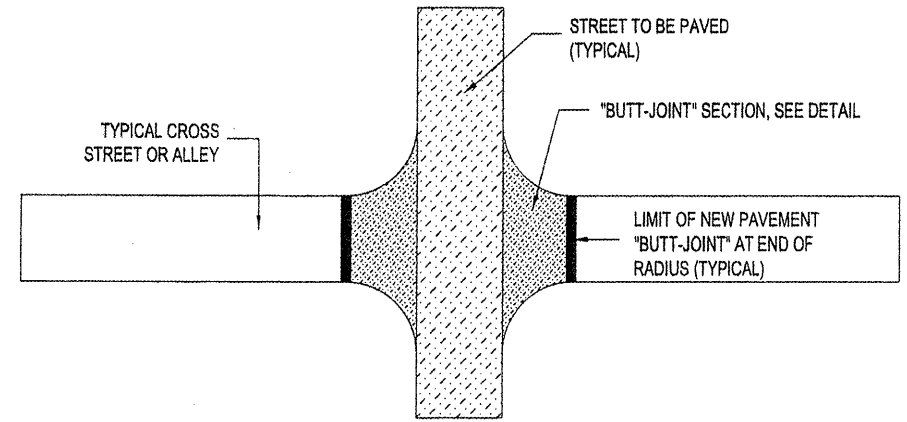
CONTRACT #99392

RTE.	SECTION	COUNTY	TOTAL SHEETS	SHEET NO.
	09-00043-00-RS	MASSAC	4	2

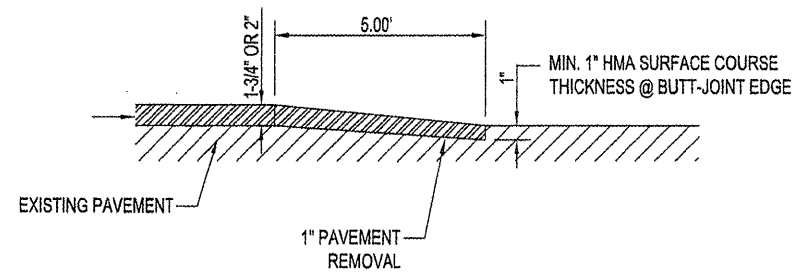
CONTRACT #99392

GENERAL NOTES:

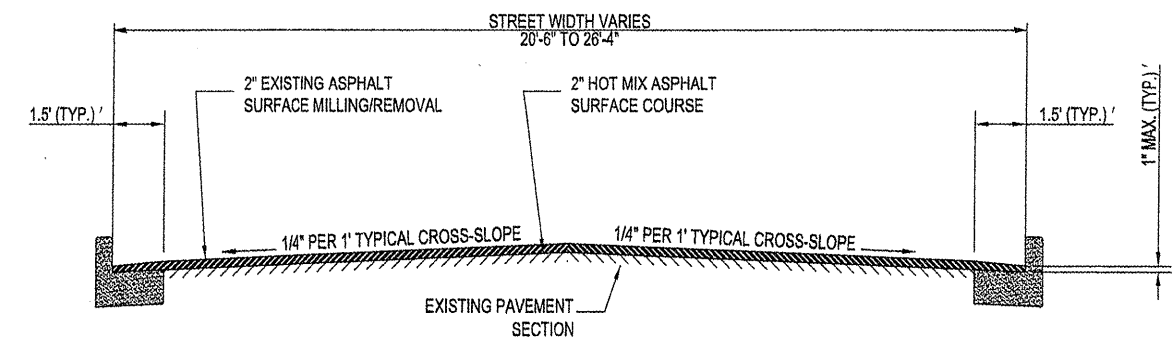
1. ALL WORK SHALL BE IN ACCORDANCE WITH THE "STANDARD SPECIFICATIONS FOR ROAD AND BRIDGE CONSTRUCTION" ADOPTED 1-1-07 (REFERRED TO AS THE STANDARD SPECIFICATIONS); THE "SUPPLEMENTAL SPECIFICATIONS AND RECURRING SPECIAL PROVISIONS"; THE LATEST EDITION OF "ILLINOIS MANUAL ON UNIFORM TRAFFIC CONTROL DEVICES FOR STEETS AND HIGHWAYS"; THESE PLANS AND THE "SPECIAL PROVISIONS" INCLUDED IN THE CONTRACT DOCUMENTS.
2. ANY REFERENCE TO STANDARDS THROUGHOUT THE PLANS OR SPECIAL PROVISIONS SHALL BE INTERPRETED AS THE LATEST STANDARD OF THE DEPARTMENT.
3. ALL TRAFFIC CONTROL AND OTHER ADVISORY SIGNS NEEDED FOR CONSTRUCTION ARE TO BE FURNISHED BY THE CONTRACTOR IN ACCORDANCE WITH SPECIFICATIONS AND SPECIAL PROVISIONS.
4. THE CONTRACTOR SHALL BE RESPONSIBLE FOR THE PROTECTION OF ALL UNDERGROUND OR SURFACE UTILITIES EVEN THOUGH THEY MAY NOT BE SHOWN ON THE PLANS. ANY UTILITY THAT IS DAMAGED DURING CONSTRUCTION SHALL BE REPAIRED OR REPLACED TO THE SATISFACTION OF THE UTILITY OWNER. THIS WORK SHALL BE AT THE CONTRACTOR'S EXPENSE.
5. THE CONTRACTOR SHALL PROVIDE ACCESS TO ABUTTING PROPERTY AT ALL TIMES DURING CONSTRUCTION OF THE PROJECT.



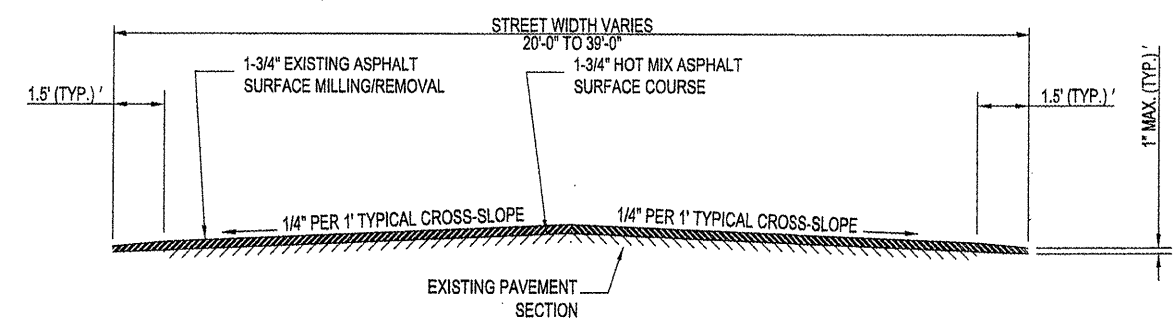
TYPICAL STREET OR ALLEY INTERSECTION DETAIL
SCALE: N.T.S.



TYPICAL "BUTT-JOINT" DETAIL
SCALE: N.T.S.



TYPICAL SECTION - MILLING AND OVERLAY
19th STREET STA. 0+00 TO STA. 26+23.50
SCALE: N.T.S.

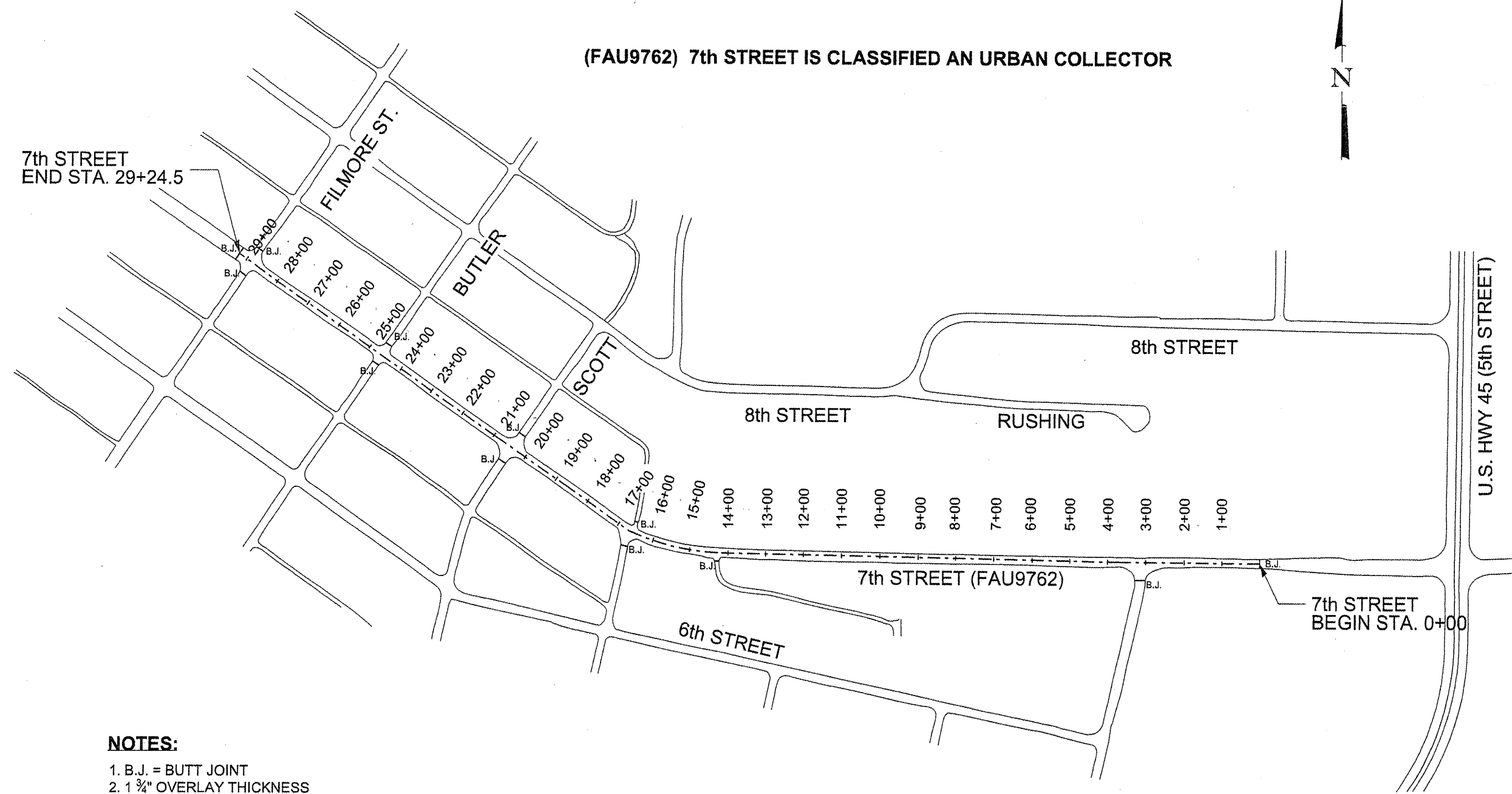


TYPICAL SECTION - MILLING AND OVERLAY
7th STREET STA. 0+00 TO STA. 29+24.50
SCALE: N.T.S.

RTE.	SECTION	COUNTY	TOTAL SHEETS	SHEET NO.
	09-00043-00-RS	MASSAC	4	3

CONTRACT #99392

(FAU9762) 7th STREET IS CLASSIFIED AN URBAN COLLECTOR



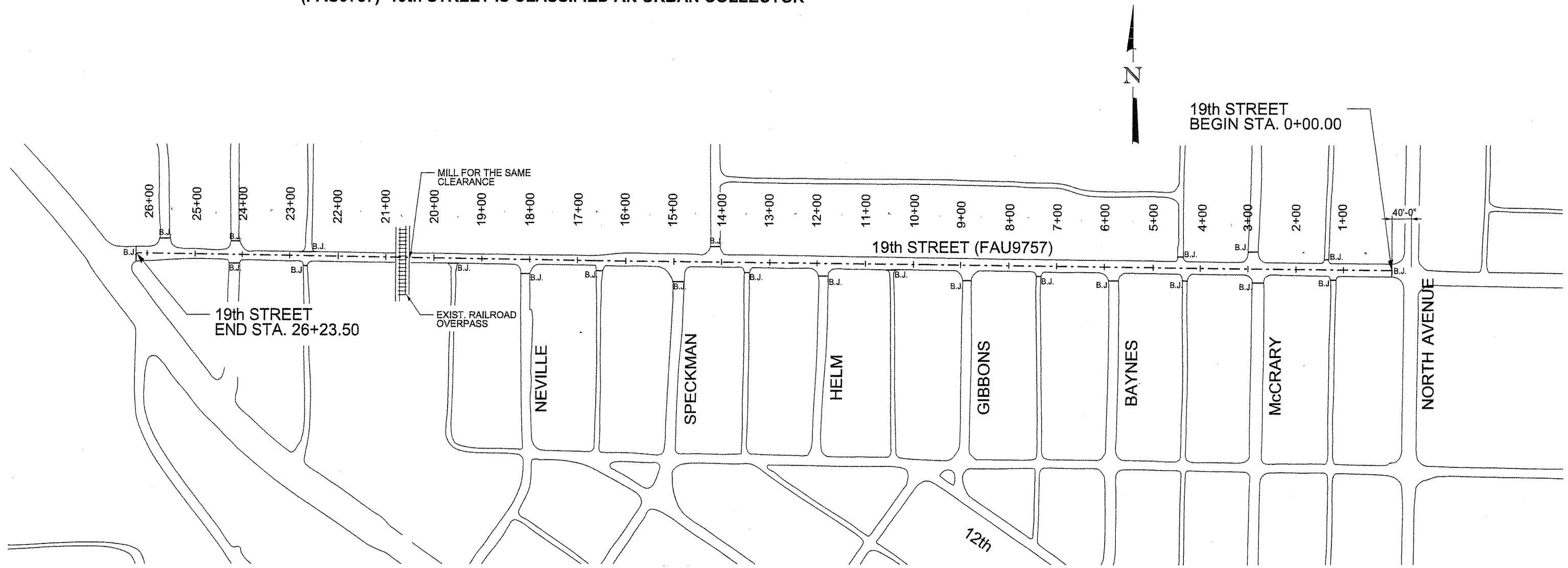
NOTES:

1. B.J. = BUTT JOINT
2. 1 3/4" OVERLAY THICKNESS
3. MAINTAIN STRAIGHT LINE ALONG EDGE OF PAVEMENT AT PARKING LOT AND DRIVEWAY ENTRANCES WHEN DOING SURFACE REMOVAL.
4. BEGIN STATION IS LOCATED BETWEEN 1223 AND 1225 EAST 7th STREET AT THE END OF THE PAVEMENT TAPER SECTION.
5. THE CENTERLINE SHALL BE A SINGLE YELLOW BROKEN LINE IN ACCORDANCE TO STD. 780001-02 AND MUTCD. THE CENTERLINE SHALL BE THE FULL LENGTH OF THE PROJECT.

RTE.	SECTION	COUNTY	TOTAL SHEETS	SHEET NO.
	09-00043-00-RS	MASSAC	4	4

CONTRACT #99392

(FAU9757) 19th STREET IS CLASSIFIED AN URBAN COLLECTOR



NOTES:

1. B.J. = BUTT JOINT
2. 2" OVERLAY THICKNESS
3. 13'-7" VERTICAL CLEARANCE NOTED ON RAILROAD OVERPASS STRUCTURE. CONTRACTOR TO FIELD VERIFY
4. MAINTAIN STRAIGHT LINE ALONG EDGE OF PAVEMENT AT PARKING LOT AND DRIVEWAY ENTRANCES WHEN DOING SURFACE REMOVAL.
5. THE CENTERLINE SHALL BE A DOUBLE YELLOW LINE IN ACCORDANCE TO STD. 780001-02 AND MUTCD. THE CENTERLINE SHALL BE THE FULL LENGTH OF THE PROJECT.