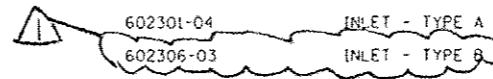


INDEX OF SHEETS

SHEET NO.	DESCRIPTION
1	COVER SHEET
2	INDEX OF SHEETS
3	GENERAL NOTES
4-9	SUMMARY OF QUANTITIES
10-11	TYPICAL SECTIONS
12-14	SCHEDULE OF QUANTITIES
15	ALIGNMENT, TIES, AND BENCHMARKS
16-17	ROADWAY PLAN AND PROFILE
18-21	MAINTAINENCE OF TRAFFIC
22	EROSION AND SEDIMENT CONTROL PLAN
23-25	SUE SHEETS
26-28	DRAINAGE
29-30	PLAT OF HIGHWAYS
31	PAVEMENT MARKING
32	LANDSCAPING PLAN
33-41	TRAFFIC SIGNAL PLANS
42	DRIVEWAY DETAILS - DISTANCE BETWEEN R.O.W. AND FACE OF CURB >= 15' (BD-01)
43	DRIVEWAY DETAILS - DISTANCE BETWEEN R.O.W. AND FACE OF CURB <15' (BD-02)
44	DETAIL OF STORM SEWER CONNECTION TO EXISTING SEWER (BD-7)
45	DETAILS FOR FRAMES AND LIDS ADJUSTMENT WITH MILLING (BD-8)
46	CURB AND GUTTER REMOVAL AND REPLACEMENT (BD-24)
47	BUTT JOINT AND HMA TAPER DETAILS (BD-32)
48	TRAFFIC CONTROL AND PROTECTION FOR SIDE ROADS, INTERSECTIONS AND DRIVEWAYS (TC-10)
49	TYPICAL APPLICATIONS - RASIED REFLECTIVE PAVEMENT MARKERS (SNOW-PLOW RESISTANT) (TC-11)
50	DISTRICT ONE TYPICAL PAVEMENT MARKERS (TC-13)
51	TRAFFIC CONTROL & PROTECTION AT TURN BAYS (TO REMAIN OPEN TO TRAFFIC) (TC-14)
52	PAVEMENT MARKING LETTERS AND SYMBOLS FOR TRAFFIC STAGING (TC-16)
53	ARTERIAL ROAD INFORMATION SIGN (TC-22)
54	DRIVEWAY ENTRANCE SIGNING (TC-26)
55	DISTRICT ONE MAST ARM MOUNTED STREET NAME SIGNS (TS-02)
56-62	DISTRICT ONE STANDARD TRAFFIC SIGNAL DESIGN DETAILS (TS-05)
63-65	ILLINOIS ROUTE 43 CROSS SECTIONS
66-69	151st STREET CROSS SECTIONS

HIGHWAY STANDARDS

STANDARD NO.	DESCRIPTION
000001-06	STANDARD SYMBOLS, ABBREVIATIONS & PATTERNS
280001-07	TEMPORARY EROSION CONTROL SYSTEMS
424001-08	PERPENDICULAR CURB RAMPS FOR SIDEWALKS
542301-03	PRECAST REINFORCED CONCRETE FLARED END SECTION
542601-03	REINFORCED CONCRETE PIPE ELBOW 24", 30" OR 36" (600mm, 750mm, OR 900mm)
602001-02	CATCH BASIN TYPE A
602301-04	INLET - TYPE A
602306-03	INLET - TYPE B
602401-03	MANHOLE TYPE A
604001-04	FRAME AND LIDS TYPE 1
604091-03	FRAME AND GRATE TYPE 24
606001-06	CONCRETE CURB TYPE B AND COMBINATION CONCRETE CURB AND GUTTER
606301-04	PC CONCRETE ISLANDS AND MEDIANS
630001-10	STEEL PLATE BEAM GUARDRAIL
635001-01	DELINEATORS
635006-03	REFLECTOR AND TERMINAL MARKER PLACEMENT
635011-02	REFLECTOR MARKER AND MOUNTING DETAILS
701101-04	OFF-RD OPERATIONS, MULTILANE, 15' (4.5m) TO 24" (600mm) FROM PAVEMENT EDGE
701106-02	OFF-RD OPERATIONS, MULTILANE, MORE THAN 15' (4.5m) AWAY
701426-07	LANE CLOSURE, MULTILANE, INTERMITTENT OR MOVING OPER., FOR SPEEDS >= 45 MPH
701427-03	LANE CLOSURE, MULTILANE, INTERMITTENT OR MOVING OPER., FOR SPEEDS <= 45MPH
701701-09	URBAN LANE CLOSURE, MULTILANE INTERSECTION
701801-05	SIDEWALK, CORNER OR CROSSWALK CLOSURE
701901-04	TRAFFIC CONTROL DEVICES
720001-01	SIGN PANEL MOUNTING DETAIL
780001-05	TYPICAL PAVEMENT MARKINGS
781001-03	TYPICAL APPLICATIONS RAISED REFLECTIVE PAVEMENT MARKERS
805001-01	ELECTRIC SERVICE INSTALLATIONS DETAILS
814001-03	HANDHOLES
814006-02	DOUBLE HANDHOLES
857001-01	STANDARD PHASE DESIGNATION DIAGRAMS AND PHASE SEQUENCES
862001-01	UNINTERRUPTABLE POWER SUPPLY (UPS)
873001-02	TRAFFIC SIGNAL GROUNDING AND BONDING
877001-05	STEEL MAST ARM ASSEMBLY AND POLE, 16' THROUGH 55'
878001-10	CONCRETE FOUNDATION DETAILS
880001-01	SPAN WIRE MOUNTED SIGNALS AND FLASHING BECON INSTALLATION
880006-01	TRAFFIC SIGNAL MOUNTING DETAILS
886001-01	DETECTOR LOOP INSTALLATIONS
886006-01	TYPICAL LAYOUTS FOR DETECTION LOOPS



SUMMARY OF QUANTITIES			URBAN CONSTRUCTION TYPE CODE					
CODE NO	ITEM	UNIT	TOTAL QUANTITIES	0004 80% FED 20% STATE ROADWAY	0021 80% FED 13.33% ST 6.67% ORL PK T. SIGNALS	0021 100% ORL PK FIRE DIST EVP	0021 100% ORL PK, LIGHTING	
20101100	TREE TRUNK PROTECTION	EACH	3	3				
20200100	EARTH EXCAVATION	CU YD	316	316				
20201200	REMOVAL AND DISPOSAL OF UNSUITABLE MATERIAL	CU YD	762	762				
20400800	FURNISHED EXCAVATION	CU YD	327	327				
20800150	TRENCH BACKFILL	CU YD	82	82				
21101505	TOPSOIL EXCAVATION AND PLACEMENT	CU YD	196	196				
25000210	SEEDING, CLASS 2A	ACRE	0.3	0.3				
25000400	NITROGEN FERTILIZER NUTRIENT	POUND	41	41				
25000500	PHOSPHORUS FERTILIZER NUTRIENT	POUND	41	41				
25000600	POTASSIUM FERTILIZER NUTRIENT	POUND	41	41				
25003115	INTERSEEDING, CLASS 1B	ACRE	0.1	0.1				
25100630	EROSION CONTROL BLANKET	SQ YD	1414	1414				
25100900	TURF REINFORCEMENT MAT	SQ YD	235	235				
25200110	SODDING, SALT TOLERANT	SQ YD	381	381				
25200200	SUPPLEMENTAL WATERING	UNIT	4	4				

SUMMARY OF QUANTITIES			URBAN CONSTRUCTION TYPE CODE					
CODE NO	ITEM	UNIT	TOTAL QUANTITIES	0004 80% FED 20% STATE ROADWAY	0021 80% FED 13.33% ST 6.67% ORL PK T. SIGNALS	0021 100% ORL PK FIRE DIST EVP	0021 100% ORL PK, LIGHTING	
28000305	TEMPORARY DITCH CHECKS	FOOT	84	84				
28000400	PERIMETER EROSION BARRIER	FOOT	1260	1260				
28000510	INLET FILTERS	EACH	35	35				
30300112	AGGREGATE SUBGRADE IMPROVEMENT 12"	SQ YD	1902	1902				
35501316	HOT-MIX ASPHALT BASE COURSE, 8"	SQ YD	40	40				
35501318	HOT-MIX ASPHALT BASE COURSE, 8 1/2"	SQ YD	546	546				
40600275	BITUMINOUS MATERIALS (PRIME COAT)	POUND	3686	3686				
40600400	MIXTURE FOR CRACKS, JOINTS, AND FLANGEWAYS	TON	6	6				
40600982	HOT-MIX ASPHALT SURFACE REMOVAL - BUTT JOINT	SQ YD	127	127				
40603085	HOT-MIX ASPHALT BINDER COURSE, IL-19.0, N70	TON	837	837				
40603090	HOT-MIX ASPHALT BINDER COURSE, IL-19.0, N90	TON	174	174				
40603335	HOT-MIX ASPHALT SURFACE COURSE, MIX "D", N50	TON	1	1				
40603148	POLYMERIZED HOT-MIX ASPHALT BINDER COURSE, STONE MATRIX ASPHALT, N80	TON	493	493				
40603595	POLYMERIZED HOT-MIX ASPHALT SURFACE COURSE, MIX "F", N90	TON	371	371				
42101300	PROTECTIVE COAT	SQ YD	941	941				

15

FILE NAME: c:\p\work\p100\stredr\rd0504670\p12442.dwg	USER NAME: STREATERJH	DESIGNED: -	REVISED: - 7-20-15
PLOT SCALE: 1/8" = 100'-0"	CHECKED: -	DRAWN: -	REVISED: -
PLOT DATE: 5/15/2015	DATE: -		

**STATE OF ILLINOIS
DEPARTMENT OF TRANSPORTATION**

SUMMARY OF QUANTITIES			
SCALE:	SHEET NO. OF SHEETS	STA. TO STA.	

F.A. RTE. 348	SECTION (3127-11N-1(14))	COUNTY COOK	TOTAL SHEETS 69	SHEET NO. 4
CONTRACT NO. 60X85				
FED. ROAD DIST. NO. 1 ILLINOIS FED. AID PROJECT				

* - SPECIALTY ITEMS

URBAN

SUMMARY OF QUANTITIES			CONSTRUCTION TYPE CODE				
CODE NO	ITEM	UNIT	TOTAL QUANTITIES	0004 80% FED 20% STATE ROADWAY	0021 80% FED 13.33% ST 6.67% ORL PK T. SIGNALS	0021 100% ORL PK FIRE DIST EVP	0021 100% ORL PK, LIGHTING
42300400	PORTLAND CEMENT CONCRETE DRIVEWAY PAVEMENT, 8 INCH	SO YD	304	304			
42400200	PORTLAND CEMENT CONCRETE SIDEWALK 5 INCH	SO FT	1923	1923			
42400410	PORTLAND CEMENT CONCRETE SIDEWALK 8 INCH	SO FT	733	733			
42400800	DETECTABLE WARNINGS	SO FT	10	10			
44000100	PAVEMENT REMOVAL	SO YD	241	241			
44000156	HOT-MIX ASPHALT SURFACE REMOVAL, 1 3/4"	SO YD	1570	1570			
44000165	HOT-MIX ASPHALT SURFACE REMOVAL, 4"	SO YD	1523	1523			
44000200	DRIVEWAY PAVEMENT REMOVAL	SO YD	724	724			
44000500	COMBINATION CURB AND GUTTER REMOVAL	FOOT	1602	1602			
44000600	SIDEWALK REMOVAL	SO FT	2025	2025			
50104400	CONCRETE HEADWALL REMOVAL	EACH	1	1			
50105220	PIPE CULVERT REMOVAL	FOOT	50	50			
54213657	PRECAST REINFORCED CONCRETE FLARED END SECTIONS 12"	EACH	1	1			

URBAN

SUMMARY OF QUANTITIES			CONSTRUCTION TYPE CODE				
CODE NO	ITEM	UNIT	TOTAL QUANTITIES	0004 80% FED 20% STATE ROADWAY	0021 80% FED 13.33% ST 6.67% ORL PK T. SIGNALS	0021 100% ORL PK FIRE DIST EVP	0021 100% ORL PK, LIGHTING
54213669	PRECAST REINFORCED CONCRETE FLARED END SECTIONS 24"	EACH	1	1			
542A2737	PIPE CULVERTS, CLASS A, TYPE 4 12"	FOOT	14	14			
550A0340	STORM SEWERS, CLASS A, TYPE 2 12"	FOOT	398	398			
550A0410	STORM SEWERS, CLASS A, TYPE 2 24"	FOOT	8	8			
55100500	STORM SEWER REMOVAL 12"	FOOT	41	41			
60107600	PIPE UNDERDRAINS 4"	FOOT	450	450			
60200105	CATCH BASINS, TYPE A, 4'-DIAMETER, TYPE 1 FRAME, OPEN LID	EACH	2	2			
60234200	INLETS, TYPE A, TYPE 1 FRAME, OPEN LID	EACH	1	1			
60237470	INLETS, TYPE A, TYPE 24 FRAME AND GRATE	EACH	2	2			
60240210	INLETS, TYPE B, TYPE 1 FRAME, OPEN LID	EACH	3	3			
60250500	CATCH BASINS TO BE ADJUSTED WITH NEW TYPE 1 FRAME, CLOSED LID	EACH	4	4			
60300105	FRAMES AND GRATES TO BE ADJUSTED	EACH	1	1			
60500060	REMOVING INLETS	EACH	2	2			
60600605	CONCRETE CURB, TYPE B	FOOT	100	100			
60603800	COMBINATION CONCRETE CURB AND GUTTER, TYPE B-6.12	FOOT	526	526			

FILE NAME :	USER NAME : STREATERJR	DESIGNED -	REVISED - ¹ 7-20-15
PROJECT :	DRAWN -	CHECKED -	REVISOR -
PLOT SCALE : 100,000 / IN	DATE -		
PLOT DATE : 5/15/2015			

**STATE OF ILLINOIS
DEPARTMENT OF TRANSPORTATION**

SUMMARY OF QUANTITIES			
SCALE:	SHEET NO.	OF SHEETS	STA. TO STA.

F.A. RTE.	SECTION	COUNTY	TOTAL SHEETS	SHEET NO.
348	(3127-UN-1)(14)	COOK	69	5
FED. ROAD DIST. NO. 1 ILLINOIS FED. AID PROJECT			CONTRACT NO. 60X85	

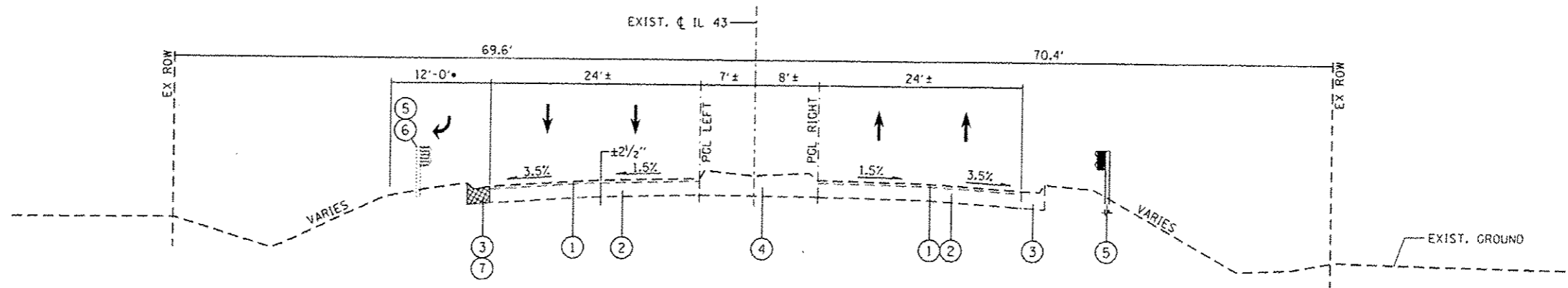
13

URBAN

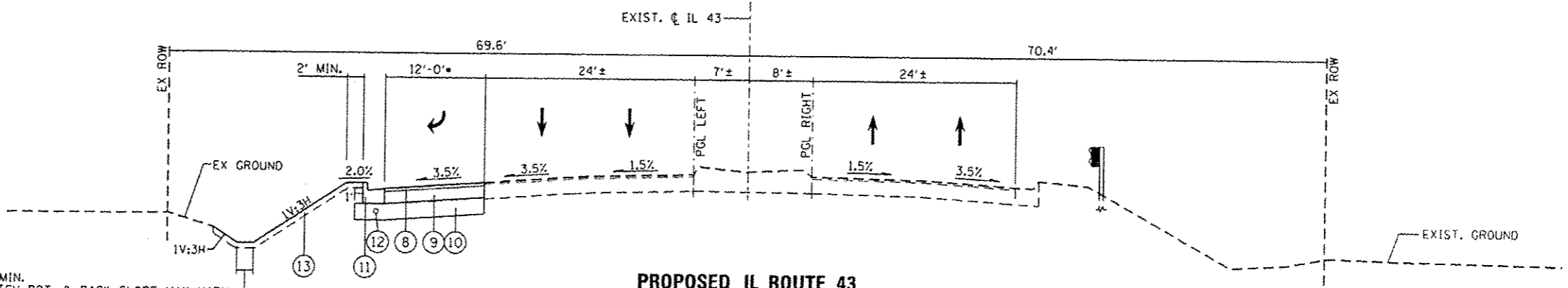
URBAN

SUMMARY OF QUANTITIES			CONSTRUCTION TYPE CODE					SUMMARY OF QUANTITIES			CONSTRUCTION TYPE CODE				
CODE NO	ITEM	UNIT	TOTAL QUANTITIES	0004 80% FED 20% STATE ROADWAY	0021 80% FED 13.33% ST 6.67% ORL PK T. SIGNALS	0021 100% ORL PK FIRE DIST EVP	0021 100% ORL PK, LIGHTING	CODE NO	ITEM	UNIT	TOTAL QUANTITIES	0004 80% FED 20% STATE ROADWAY	0021 80% FED 13.33% ST 6.67% ORL PK T. SIGNALS	0021 100% ORL PK FIRE DIST EVP	0021 100% ORL PK, LIGHTING
60605000	COMBINATION CONCRETE CURB AND GUTTER, TYPE B-6.24	FOOT	863	863				70300570	PAVEMENT MARKING TAPE, TYPE III 24"	FOOT	39	39			
63200310	GUARDRAIL REMOVAL	FOOT	404	404				70301000	WORK ZONE PAVEMENT MARKING REMOVAL	SQ FT	2822	2822			
* 66900200	NON-SPECIAL WASTE DISPOSAL	CU YO	200	200				* 72000100	SIGN PANEL - TYPE 1	SQ FT	28	16	12		
* 66900450	SPECIAL WASTE PLANS AND REPORTS	L SUM	1	1				* 72000200	SIGN PANEL - TYPE 2	SQ FT	39	11	28		
* 66900530	SOIL DISPOSAL ANALYSIS	EACH	1	1				* 72400100	REMOVE SIGN PANEL ASSEMBLY - TYPE A	EACH	2	2			
67000400	ENGINEER'S FIELD OFFICE, TYPE A	CAL MO	12	12				* 72400500	RELOCATE SIGN PANEL ASSEMBLY - TYPE A	EACH	2	2			
67100100	MOBILIZATION	L SUM	1	1				* 72800100	TELESCOPING STEEL SIGN SUPPORT	FOOT	65	65			
67201100	SEALING ABANDONED MONITORING WELLS	EACH	5	5				* 73100100	BASE FOR TELESCOPING STEEL SIGN SUPPORT	EACH	4	4			
70300100	SHORT TERM PAVEMENT MARKING	FOOT	350	350				* 78000100	THERMOPLASTIC PAVEMENT MARKING - LETTERS AND SYMBOLS	SQ FT	364	364			
70300210	TEMPORARY PAVEMENT MARKING LETTERS AND SYMBOLS	SQ FT	364	364				* 78000200	THERMOPLASTIC PAVEMENT MARKING - LINE 4"	FOOT	720	720			
70300220	TEMPORARY PAVEMENT MARKING - LINE 4"	FOOT	720	720				* 78000400	THERMOPLASTIC PAVEMENT MARKING - LINE 6"	FOOT	914	914			
70300240	TEMPORARY PAVEMENT MARKING - LINE 6"	FOOT	914	914				* 78000600	THERMOPLASTIC PAVEMENT MARKING - LINE 12"	FOOT	37	37			
70300260	TEMPORARY PAVEMENT MARKING - LINE 12"	FOOT	37	37				* 78000650	THERMOPLASTIC PAVEMENT MARKING - LINE 24"	FOOT	75	75			
70300280	TEMPORARY PAVEMENT MARKING - LINE 24"	FOOT	75	75											
70300520	PAVEMENT MARKING TAPE, TYPE III 4"	FOOT	6846	6846											* - SPECIALTY ITEMS

FILE NAME :	USER NAME : STREAFER/R	DESIGNED -	REVISED - 7-20-15	STATE OF ILLINOIS DEPARTMENT OF TRANSPORTATION	SUMMARY OF QUANTITIES	F.A. RTE.	SECTION	COUNTY	TOTAL SHEETS	SHEET NO.
C:\p\work\p100\stredar\p100304670-P12442-21-SCD.dgn	DRAWN -	REVISED -	348			(3127-11N-1(14))	COOK	69	6	
PLOT SCALE : 100,0000' / 1"	CHECKED -	REVISED -	CONTRACT NO. 60X85							
PLOT DATE : 5/15/2015	DATE -	REVISED -	SCALE:			SHEET NO. OF SHEETS	STA. TO STA.	FED. ROAD DIST. NO. 1 ILLINOIS FED. AID PROJECT		



EXISTING IL ROUTE 43
STA. 500+27 to STA. 505+58.6



PROPOSED IL ROUTE 43
STA. 500+27 to STA. 505+58.6

2' MIN.
DITCH BOT. & BACK SLOPE MAY VARY
TO ACCOMMODATE EXIST. CONDITIONS.
SEE CROSS SECTION SHEETS FOR MORE
INFORMATION.

LEGEND

- ① HMA OVERLAY (± 2 1/2")
- ② PCC BASE COURSE (± 13")
- ③ B-6.24 CURB & GUTTER
- ④ BARRIER MEDIAN
- ⑤ GUARDRAIL
- ⑥ GUARDRAIL REMOVAL
- ⑦ CURB & GUTTER REMOVAL
- ⑧ 1 3/4" POLYMERIZED HMA SURFACE COURSE MIX "F", N90
- ⑨ HOT-MIX ASPHALT BASE COURSE, 8 1/2"
- ⑩ 12" AGGREGATE SUBGRADE IMPROVEMENT
- ⑪ B-6.24 CURB & GUTTER
- ⑫ PROP. 4" PIPE UNDERDRAIN (STA 501+00 to 503+00)**
- ⑬ 6" TOPSOIL EXCAVATION AND PLACEMENT AND SODDING, SALT TOLERANT

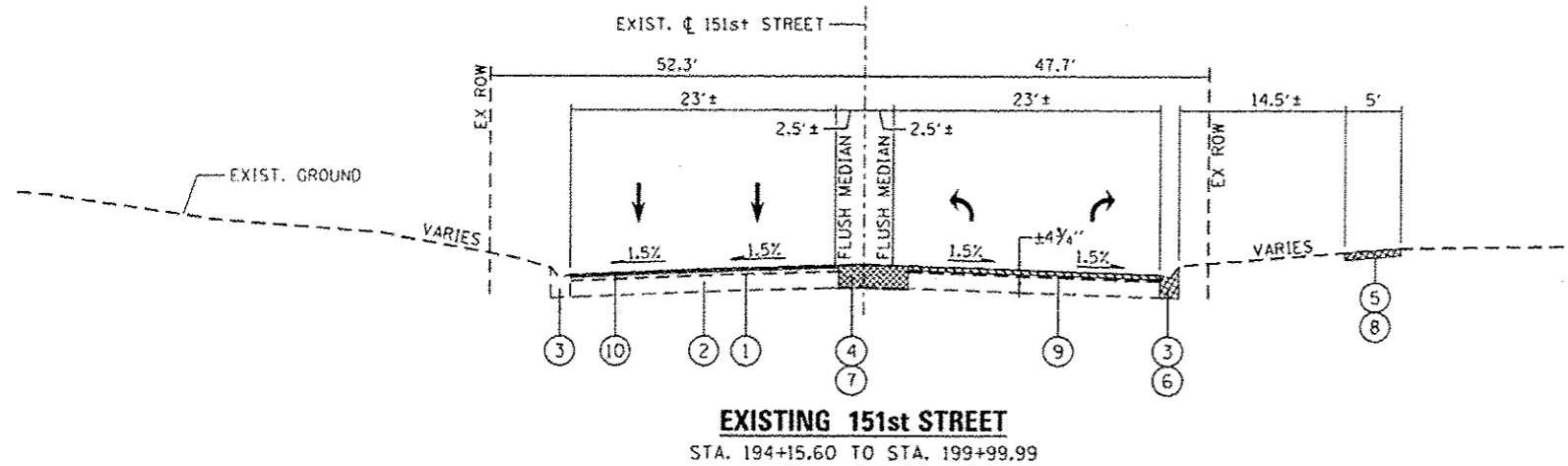
• TAPERS FROM 12" TO 0" FROM STA 503+58.55 TO STA 505+58.55

** ALL PIPE UNDERDRAINS SHALL BE PLACED AT A DEPTH OF 30" BELOW THE TOP OF THE PROPOSED PAVEMENT OR AS DEEP AS POSSIBLE AND IN ACCORDANCE WITH CHECK SHEET #19 OF THE SUPPLEMENTAL SPECIFICATIONS AND REOCCURRING SPECIAL PROVISIONS. THE COST OF MAKING PIPE UNDERDRAIN CONNECTIONS TO DRAINAGE STRUCTURES SHALL BE INCLUDED IN THE COST OF PIPE UNDERDRAINS ITEM.

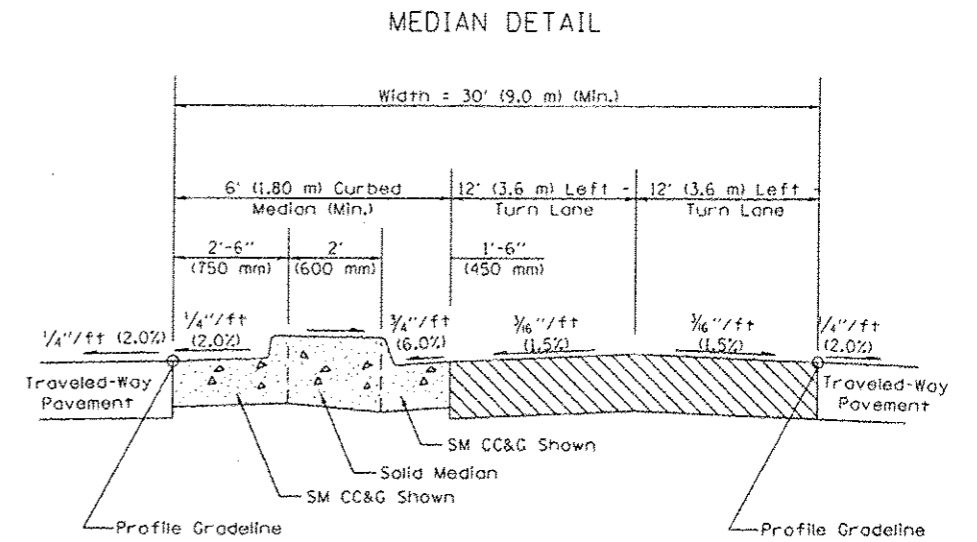
HOT-MIX ASPHALT MIXTURE REQUIREMENTS		QUALITY MANAGEMENT PROGRAM (QMP)
MIXTURE TYPE	AIR VOIDS @ Ndes	
POLYMERIZED HOT-MIX ASPHALT SURFACE COURSE, MIX "F", N90 (IL-9.5 mm)	4% @ 90 GYR.	QA/QC
HOT-MIX ASPHALT BINDER COURSE, IL-19.0; N90	4% @ 90 GYR.	QA/QC
HOT-MIX ASPHALT BASE COURSE, 8 1/2" (HMA BINDER IL-19.0)	4% @ 70 GYR.	QA/QC
HMA SURFACE COURSE, MIX D, N50 (IL 9.5 mm); 2"	4% @ 50 GYR.	QA/QC
HMA BASE COURSE, 8" (HMA BINDER IL-19.0 mm); CE-8"	4% @ 50 GYR.	QA/QC
POLYMERIZED HOT-MIX ASPHALT BINDER COURSE, STONE MATRIX ASPHALT, N80	3.5% @ 80 GYR.	QA/QC

QMP DESIGNATION: QUALITY CONTROL/ QUALITY ASSURANCE (QC/QA); QUALITY CONTROL FOR PERFORMANCE (QCP)

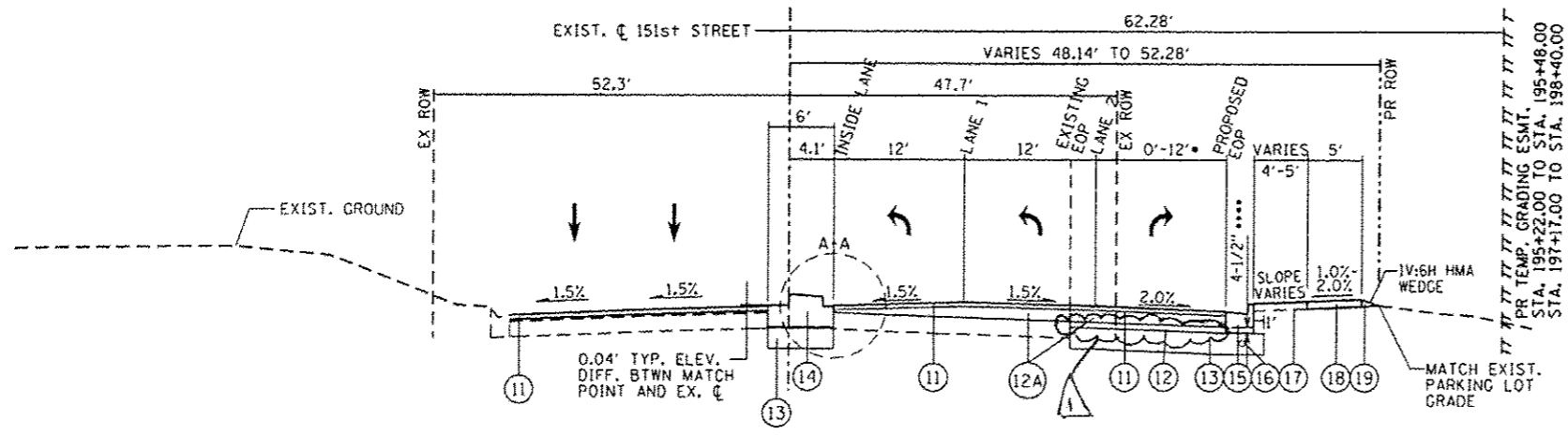
THE UNIT WEIGHT TO BE USED TO CALCULATE ALL HMA SURFACE MIXTURE QUANTITIES IS 112 LBS/50 YD/IN.
THE "AC TYPE" FOR POLYMERIZED HMA MIXES SHALL BE "SBS/SBR PG 76-22" AND FOR NON POLYMERIZED HMA THE "AC TYPE" SHALL BE "PG 64-22" UNLESS MODIFIED BY DISTRICT ONE SPECIAL PROVISIONS. FOR USE OF RECYCLED MATERIALS SEE SPECIAL PROVISIONS.
QUALITY MANAGEMENT PROGRAM (QMP) IDENTIFIES THE PARTICULAR QUALITY CONTROL SPECIFICATION THAT APPLIES TO THE HMA MIXTURE.



EXISTING 151st STREET
STA. 194+15.60 TO STA. 199+99.99



TYPICAL SECTION WITH DUAL LEFT-TURN LANES
(Raised-Curb Median and Posted Speed < 50 mph (80 km/h))



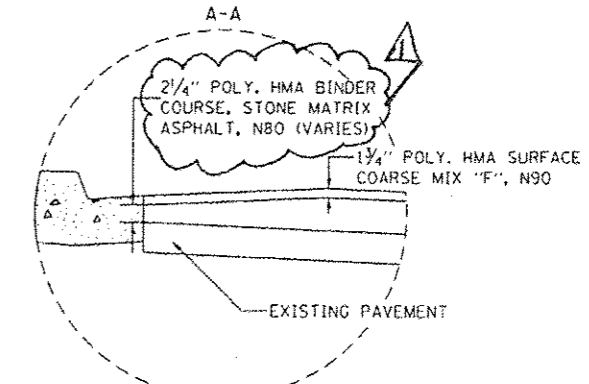
PROPOSED 151st STREET
STA. 194+15.60 TO STA. 195+90

(WITHIN THESE STATION LIMITS THE WATER SHOULD DRAIN TOWARDS THE PROPOSED EDGE OF PAVEMENT)
STA. 196+00 TO STA. 199+40

(WITHIN THESE STATION LIMITS THE WATER SHOULD DRAIN TOWARDS THE PROPOSED EDGE OF MEDIAN ENDING AT THE EDGE OF LANE ONE)
STA. 199+50 TO STA. 199+70

(WITHIN THESE STATION LIMITS THE WATER SHOULD DRAIN TOWARDS THE PROPOSED EDGE OF PAVEMENT)

EDGE OF PAVEMENT DETAIL



LEGEND

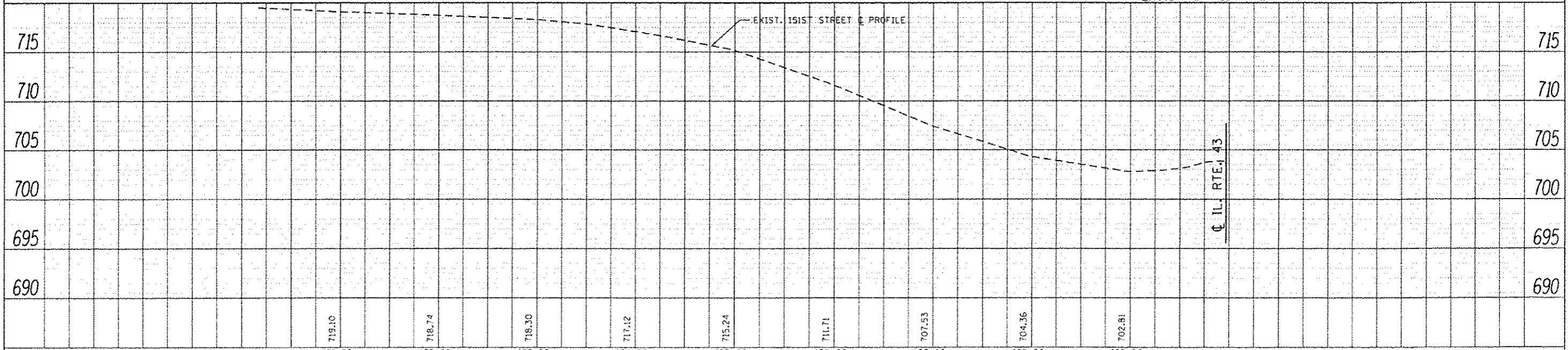
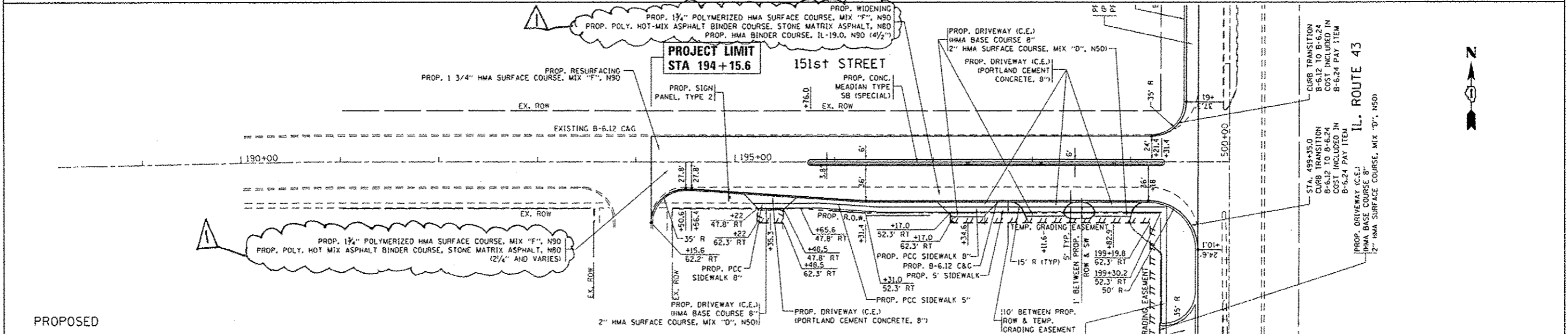
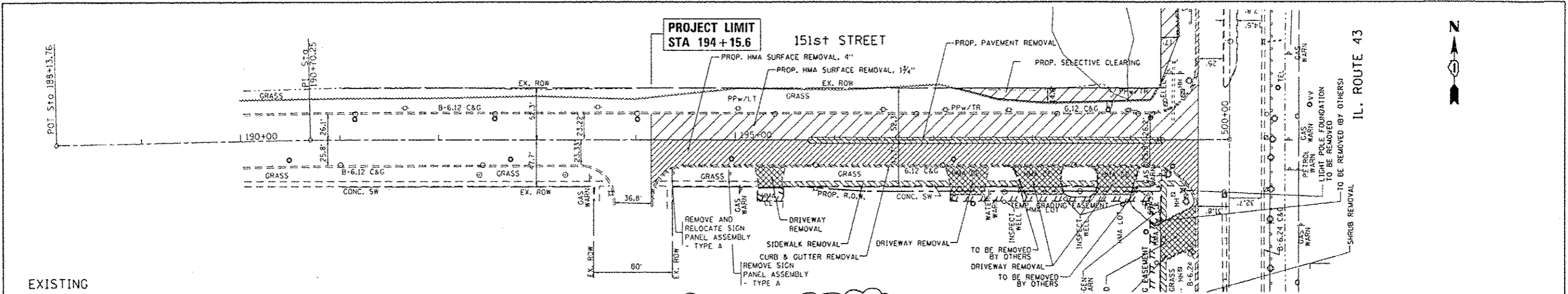
- ① HMA SURFACE COURSE ± 4 3/4"
- ② HMA BASE COURSE ± 1 1/2"
- ③ B-6.12 CURB & GUTTER
- ④ FLUSH MEDIAN
- ⑤ EXIST. SIDEWALK
- ⑥ CURB & GUTTER REMOVAL
- ⑦ PAVEMENT REMOVAL
- ⑧ SIDEWALK REMOVAL
- ⑨ 4" PAVEMENT SURFACE REMOVAL
- ⑩ 1 3/4" PAVEMENT SURFACE REMOVAL
- ⑪ 1 3/4" POLYMERIZED HMA SURFACE COURSE MIX "F", N90
- ⑫ HOT-MIX ASPHALT BINDER COURSE, IL 19.0, N90 4 1/2"
- ⑬ 12" AGGREGATE SUBGRADE IMPROVEMENT
- ⑭ PROP. SOLID MEDIAN (SEE DETAIL)
- ⑮ PROP. B-6.12 CURB & GUTTER
- ⑯ PROP. 4" PIPE UNDERDRAIN (STA. 196+50 TO 199+00) ...
- ⑰ 6" TOPSOIL EXCAVATION AND PLACEMENT AND SODDING, SALT TOLERANT
- ⑱ SIDEWALK - SLOPE AT 1.0% FROM STA. 195+85.00 TO 196+45.64, 2.0% SLOPE THEREAFTER.
- ⑲ 1V:6H HMA WEDGE (TO MATCH EXIST. PARKING LOT GRADE)

- TAPERS FROM 12' TO 0' FROM 194+56.41 TO 196+31.41
- CORES AT 196+50 SHOW 11 3/4" PCC BASE COURSE AND ALL OTHER CORES FOR 151ST STREET INDICATE HMA BASE COURSE
- ALL PIPE UNDERDRAINS SHALL BE PLACED AT A DEPTH OF 30" BELOW THE TOP OF THE PROPOSED PAVEMENT OR AS DEEP AS POSSIBLE AND IN ACCORDANCE WITH CHECK SHEET #19 OF THE SUPPLEMENTAL SPECIFICATIONS AND REOCCURRING SPECIAL PROVISIONS. THE COST OF MAKING PIPE UNDERDRAIN CONNECTIONS TO DRAINAGE STRUCTURES SHALL BE INCLUDED IN THE COST OF PIPE UNDERDRAINS ITEM.
- THE TOP OF PROPOSED HMA BINDER COURSE (4 1/2") SHALL MATCH THE ELEVATION OF THE EXISTING EDGE OF PAVEMENT AFTER MILLING.

USER NAME - STREATER, JR.	DESIGNED - BCA	REVISED - 10/05/12	STATE OF ILLINOIS DEPARTMENT OF TRANSPORTATION	IL ROUTE 43 AT 151st STREET TYPICAL SECTIONS - 151st STREET		F.A.P. RTE. - 348	SECTION - 13127-1W-1(14)	COUNTY - COOK	TOTAL SHEETS - 59	SHEET NO. - 11	
PLOT SCALE - 800,000 / 1" = 100'	DRAWN - BCA	REVISED - 12/4/12		SCALE: N.T.S.	SHEET 2 OF 2 SHEETS	STA. 499+10.11 TO STA. 505+58.55	CONTRACT NO. 60X85				
CHECKED - MMQ	DATE - 8/02/12	REVISED - 4/11/13		ILLINOIS FED. AID PROJECT							
PLOT DATE - 7/10/2015	DATE - 8/02/12	REVISED - 7/10/2015									





PLAN	DATE	BY
REVISIONS		
NO. 1		
NO. 2		
NO. 3		
NO. 4		
NO. 5		
NO. 6		
NO. 7		
NO. 8		
NO. 9		
NO. 10		

PROFILE	DATE	BY
REVISIONS		
NO. 1		
NO. 2		
NO. 3		
NO. 4		
NO. 5		
NO. 6		
NO. 7		
NO. 8		
NO. 9		
NO. 10		



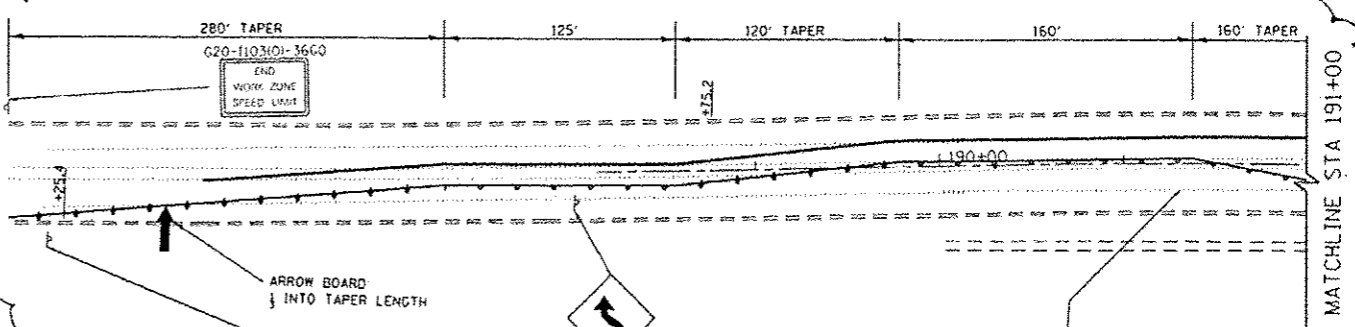
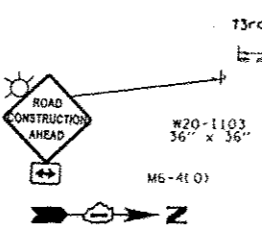
FILE NAME: p:\11004EB101\11004EB101.mxd	USER NAME: STREATERJR	DESIGNED: -	REVISED: - 7/10/2015	ROADWAY PLAN AND PROFILE				F.A.P. RFE: 348	SECTION: (3127-11N-114)	COUNTY: COOK	TOTAL SHEETS: 69	SHEET NO.: 17
STATE OF ILLINOIS DEPARTMENT OF TRANSPORTATION				IL. ROUTE 43 AT 151ST STREET				CONTRACT NO. 60X85		ILLINOIS F.E.O. AID PROJECT		
SCALE: 1"=50'				SHEET 07 OF SHEETS				STA. 191+00 TO STA. 199+00				

LEGEND

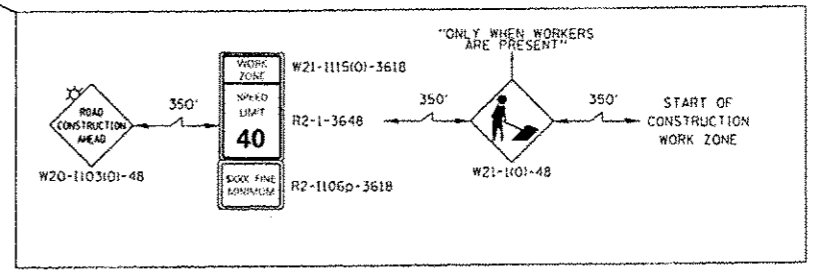
-  WORK ZONE
-  P.V.M.T. MRK. TAPE, T.Y. III WITH DRUMS OR BARRICADES AT 50' CENTERS (20' CENTERS AT TAPERS)
-  TRAFFIC CONTROL SIGNS
-  ARROW BOARD

P.V.M.T. MRK. TAPE, T.Y. III
24" WHITE (TYP.)

4" SOLID YELLOW DOUBLE LINE 11" C-C



P.V.M.T. MRK. REM. (TYP.)
SEE M.T.N. OF TRAFFIC GEN. NOTES



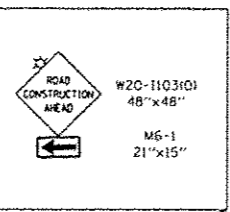
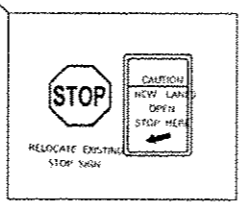
MATCHLINE STA 191+00

MATCHLINE STA 191+00

PROJECT LIMIT
STA 194+15.6

151st STREET

COOK COUNTY FOREST PRESERVE



73rd Ave.
200'

SIDEWALK CLOSED PER STD. 701801

REMOVE SKIP DASHES PRIOR PLACING DOUBLE YELLOW ON THE CENTER LINE.

R3-6

R10-60

IL. ROUTE 43

SIDEWALK CLOSED PER STD. 701801

P.V.M.T. MRK. TAPE, T.Y. III
4" SOLID YELLOW DOUBLE LINE 11" C-C

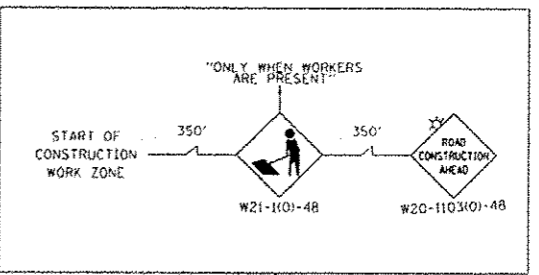
DRUMS OF TYPE II BARRICADES AT 50' CENTERS (20' CENTERS ON TAPERS) (TYP.)

DRUMS OR BARRICADES AT 50' CENTERS (20' CENTERS ON TAPERS) (TYP.)

P.V.M.T. MRK. TAPE, T.Y. III
4" WHITE (TYP.)

ROADWAY LIMIT
STA 505+58.6

PROJECT LIMIT
STA 507+20.0



IL. ROUTE 43

P.V.M.T. MRK. TAPE, T.Y. III
24" WHITE (TYP.)

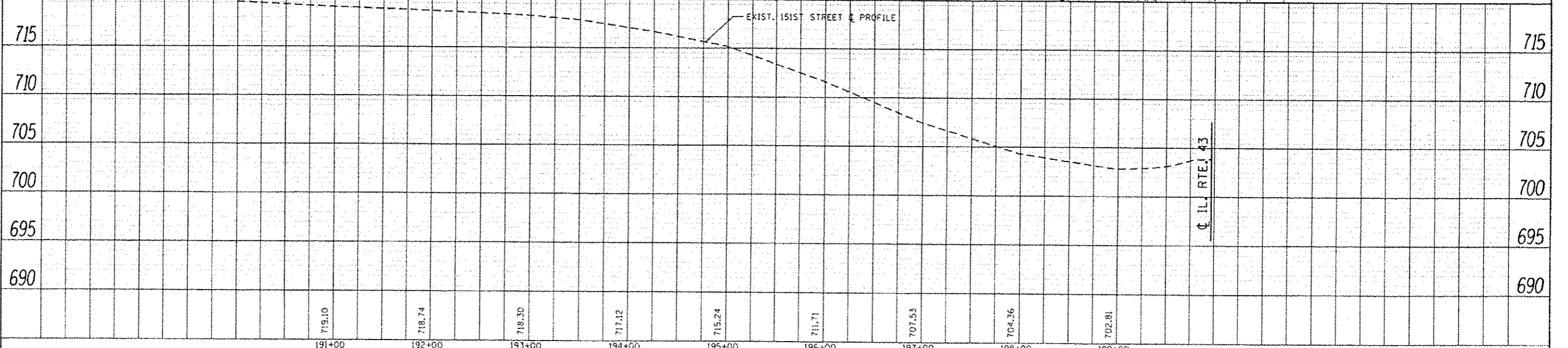
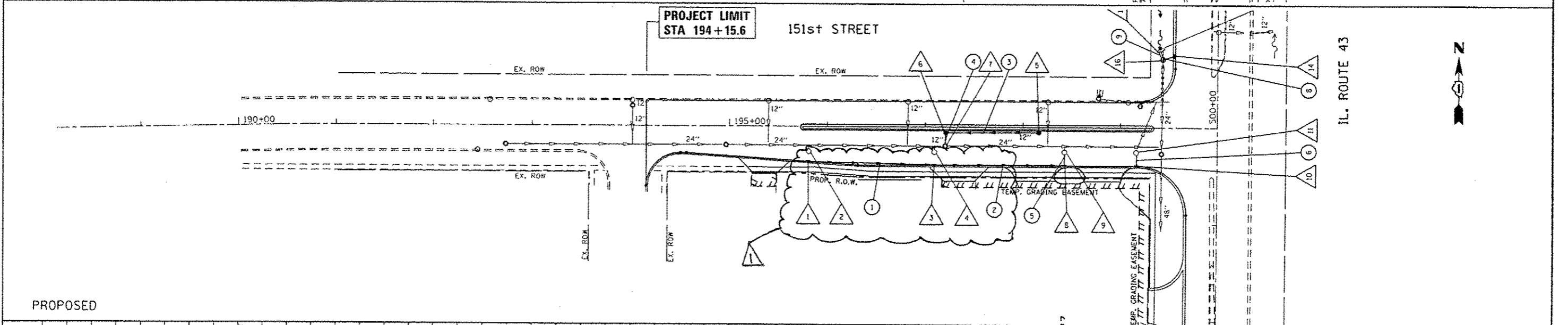
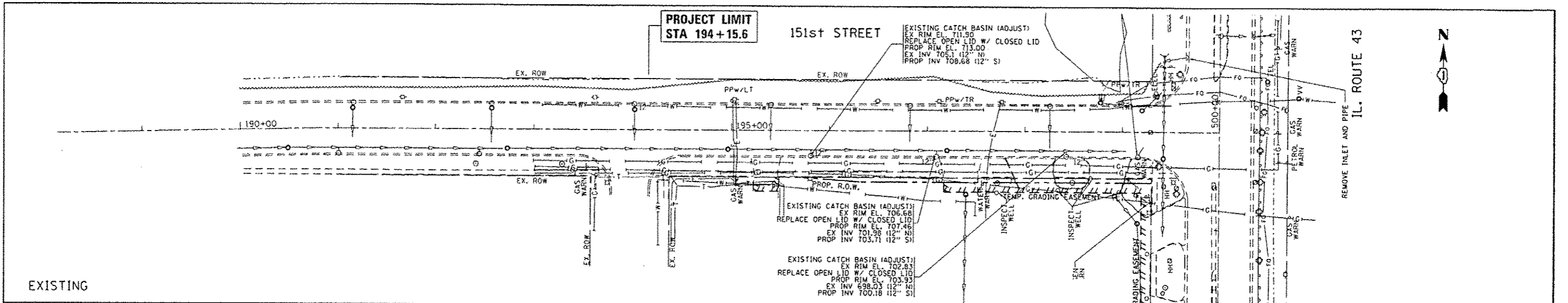
P.V.M.T. MRK. TAPE, T.Y. III
4" WHITE (TYP.)

PROJECT LIMIT
STA 497+58.3

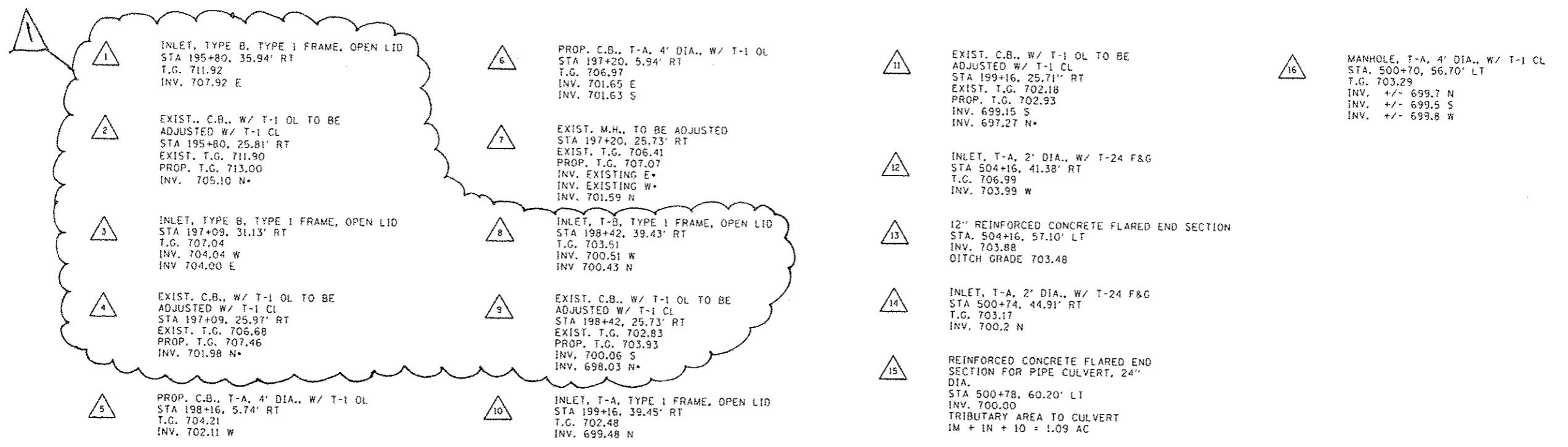
FILE NAME	USER NAME	DESIGNED	REVISIONS	STATE OF ILLINOIS DEPARTMENT OF TRANSPORTATION			STAGE 2 CONSTRUCTION IL 43 AT 151st STREET			F.A.P. RTE.	SECTION	COUNTY	TOTAL SHEETS	SHEET NO.
			7/10/2015							398	13127-1N-114	COOK	69	21
SCALE	DATE	CHECKED								CONTRACT NO. 60XB5		ILLINOIS FED. AID PROJECT		

PLAN	DATE
BY	
CHECKED	
DESIGNED	
NOTED	
APPROVED	
DATE	

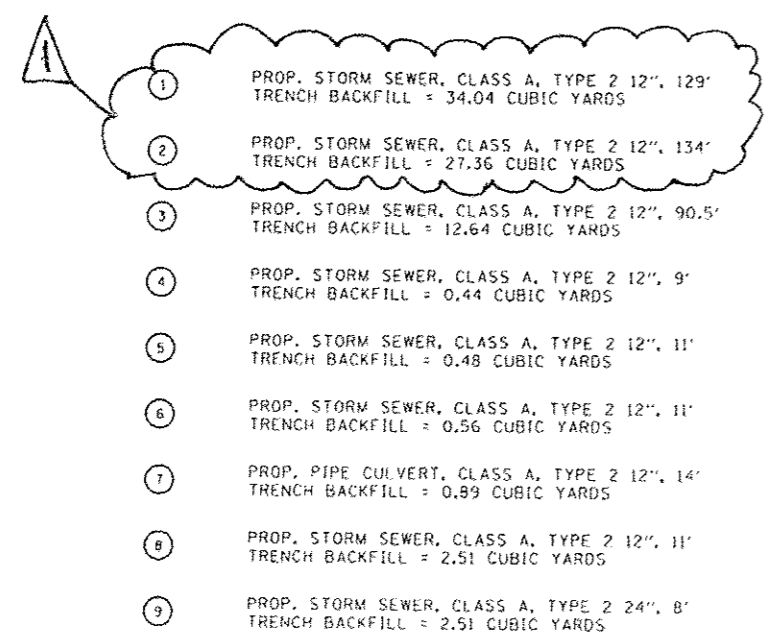
PROFILE	DATE
BY	
CHECKED	
DESIGNED	
NOTED	
APPROVED	
DATE	



FILE NAME	USER NAME	DESIGNED	REVISIONS	STATE OF ILLINOIS DEPARTMENT OF TRANSPORTATION		DRAINAGE PLAN AND PROFILE IL. ROUTE 43 AT 151ST STREET		F.A.P. RTE.	SECTION	COUNTY	TOTAL SHEETS	SHEET NO.
			1/10/2015					348	(3127-11N-1114)	COOK	69	27
										CONTRACT NO. 60XB5		
										ILLINOIS REG. AID PROJECT		



* DENOTES EXISTING INVERTS IN EXISTING STRUCTURES
STORM WATER STRUCTURE OFFSET LOCATIONS GIVEN ON THE DETAILED PLANS ARE TO THE FOLLOWING POINTS:
A) FOR STRUCTURES FALLING IN THE CURB LINE - TO THE EDGE OF THE PAVEMENT.
B) FOR ALL OTHER STRUCTURE LOCATIONS - TO THE CENTER OF THE STRUCTURE.



FILE NAME	USER NAME - STREATERJH	DESIGNED -	REVISED - 7/10/2015	STATE OF ILLINOIS DEPARTMENT OF TRANSPORTATION	DRAINAGE TABLE IL 43 AT 151st STREET	F.A.P. RTE.	SECTION	COUNTY	TOTAL SHEETS	SHEET NO.
Default	PLOT SCALE = 1/8" = 1'-0"	CHECKED -	REVISED -			348	(3127-DN-1014)	COOK	69	28
	PLOT DATE = 7/10/2015	DATE -	REVISED -			CONTRACT NO. 60X85		ILLINOIS FED. AID PROJECT		