

**STATE OF ILLINOIS**  
**DEPARTMENT OF TRANSPORTATION**  
**DIVISION OF HIGHWAYS**  
**PROPOSED**  
**HIGHWAY PLANS**

F.A.I. RTE.	SECTION	COUNTY	TOTAL SHEETS	SHEET NO.
57	(38-5,6,7,8,9)I-2	IROQUOIS	9	1
		ILLINOIS	CONTRACT NO. 66E69	

- INDEX OF SHEETS**
- 1 COVER SHEET
  - 2 GENERAL NOTES
  - 3-4 SUMMARY OF QUANTITIES
  - 5 TYPICAL SECTIONS
  - 6 SCHEDULES
  - 7 PROJECT LAYOUT
  - 8-9 DETAILS

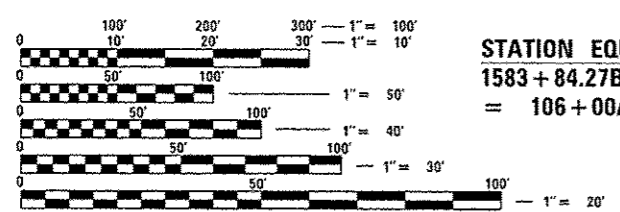
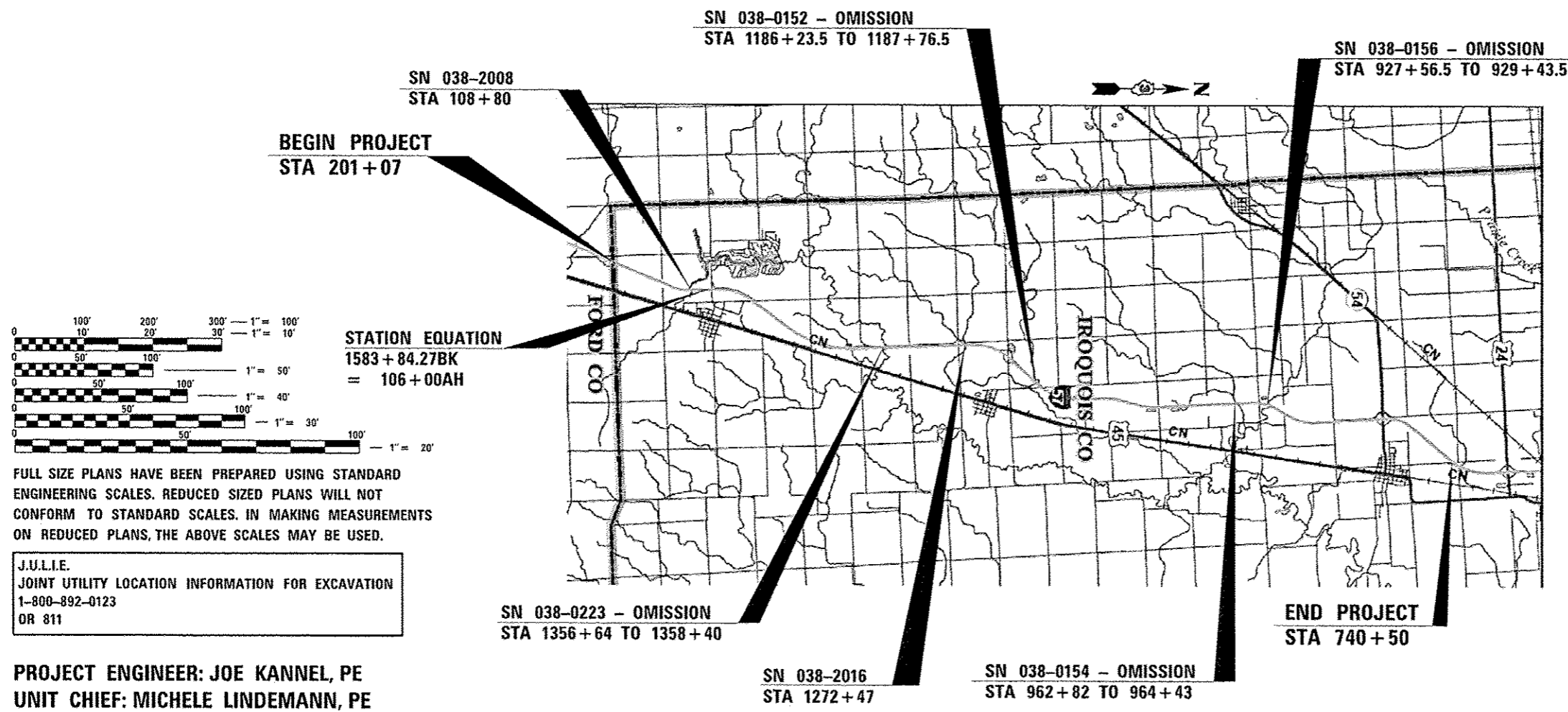
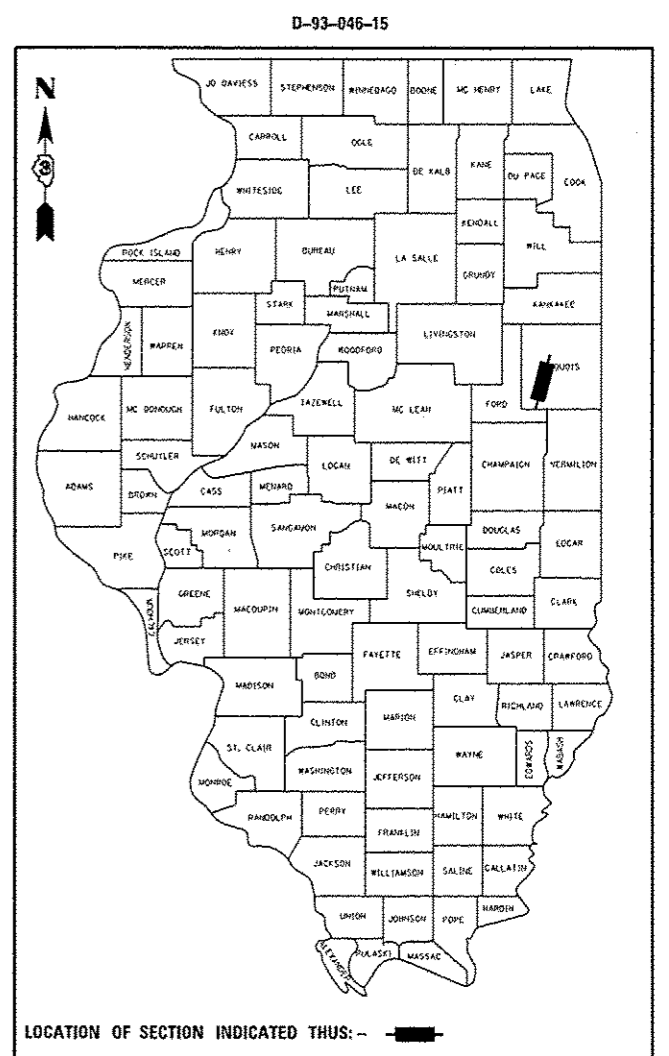
**LIST OF ILLINOIS DOT HIGHWAY STANDARDS**

- 000001-06 STANDARD SYMBOLS, ABBREVIATIONS AND PATTERNS
- 001006 DECIMAL OF AN INCH AND OF A FOOT
- 701101-04 OFF-ROAD OPERATIONS MULTILANE, 15' (4.5 m) TO 24' (600 mm) FROM PAVEMENT EDGE
- 701106-02 OFF-ROAD OPERATIONS, MULTILANE, MORE THAN 15' (4.5 m) AWAY
- 701401-09 LANE CLOSURE, FREEWAY/EXPRESSWAY
- 701426-07 LANE CLOSURE, MULTILANE INTERMITTENT OR MOVING OPERATION, FOR SPEEDS ≥ 45 MPH
- 701901-04 TRAFFIC CONTROL DEVICES
- 780001-05 TYPICAL PAVEMENT MARKINGS
- 781001-03 TYPICAL APPLICATIONS RAISED REFLECTIVE PAVEMENT MARKERS

**FAI ROUTE 57 (I-57)**  
**SECTION (38-5,6,7,8,9)I-2**

**MICROSURFACING CENTERLINE (NB ONLY)**  
**IROQUOIS COUNTY**

C-93-090-15



FULL SIZE PLANS HAVE BEEN PREPARED USING STANDARD ENGINEERING SCALES. REDUCED SIZED PLANS WILL NOT CONFORM TO STANDARD SCALES. IN MAKING MEASUREMENTS ON REDUCED PLANS, THE ABOVE SCALES MAY BE USED.

J.U.L.I.E.  
 JOINT UTILITY LOCATION INFORMATION FOR EXCAVATION  
 1-800-892-0123  
 OR 811

**PROJECT ENGINEER: JOE KANNEL, PE**  
**UNIT CHIEF: MICHELE LINDEMANN, PE**

**CONTRACT NO. 66E69**

GROSS LENGTH = 93841.27 FT. = 17.773 MILE  
 NET LENGTH = 93164.27 FT. = 17.645 MILE

**FUNCTIONAL CLASSIFICATION - INTERSTATE**  
 2013 ADT = 14,850  
 P.V. = 61.98%  
 S.U. = 5.57%  
 M.U. = 32.45%

STATE OF ILLINOIS  
 DEPARTMENT OF TRANSPORTATION  
 DIVISION OF HIGHWAYS

SUBMITTED *May 14 2015*  
*Paul Costo* DEPUTY DIRECTOR OF HIGHWAYS, REGION ENGINEER

*June 26 2015*  
*John D. Baranzolo, PE, Jr.* ENGINEER OF DESIGN AND ENVIRONMENT

*June 26 2015*  
*Omer Osman, PE, Jr.* DIRECTOR OF HIGHWAYS, CHIEF ENGINEER

**PRINTED BY THE AUTHORITY**  
**OF THE STATE OF ILLINOIS**

**GENERAL NOTES**

THE ENGINEER WILL BE THE SOLE JUDGE CONCERNING CURING TIME FOR THE MICRO-SURFACING AND WHEN THE ROADWAY WILL BE OPENED TO TRAFFIC.

ANY REFERENCE TO A STANDARD IN THESE PLANS SHALL BE INTERPRETED TO MEAN THE EDITION AS INDICATED BY THE SUBNUMBER SHOWN IN THE LIST OF STANDARDS OR THE COPY INCLUDED IN THESE PLANS.

THE AGGREGATES FOR THE SURFACE LIFT OF MICRO-SURFACING SHALL MEET THE FRICTION AGGREGATE REQUIREMENTS FOR MIXTURE D IN ARTICLE 1004.03(a).

THE FOLLOWING RATES OF APPLICATION HAVE BEEN USED IN CALCULATING PLAN QUANTITIES:

MIX FOR CRACKS, JTS & FLGWYS	0.0003	TONS / SQ YD
MICRO-SURFACING, SINGLE PASS	20	LBS / SQ YD

ONLY THE PASSING LANE IS TO BE CLOSED FOR THE CENTERLINE WORK.

THE TEMPORARY PAVEMENT MARKING SHALL BE PLACED 3' OFF THE CENTERLINE IN DRIVING LANE PRIOR TO REMOVING EXISTING LINE.

THE CONTRACTOR SHALL CONTACT JULIE AT LEAST 48 HOURS PRIOR TO EXCAVATION TO DETERMINE WHICH UTILITIES ARE IN THE AREA.

STATE OF ILLINOIS  
DEPARTMENT OF TRANSPORTATION  
DISTRICT THREE

PREPARED BY: *D. Benil*  
DISTRICT STUDIES & PLANS ENGINEER

DATE: May 14, 2015

EXAMINED BY: *Herb Jung ESB*  
DISTRICT CONSTRUCTION ENGINEER

*Herb Jung ESB*  
DISTRICT MATERIALS ENGINEER

*Russell A. Beckman*  
DISTRICT OPERATIONS ENGINEER

FILE NAME :	USER NAME = carpenterdj	DESIGNED - _____	REVISED - _____	<b>STATE OF ILLINOIS DEPARTMENT OF TRANSPORTATION</b>	<b>GENERAL NOTES</b>	F.A.I. RTE.	SECTION	COUNTY	TOTAL SHEETS	SHEET NO.	
p:\1\10044810\TEG\Illinois.gov\FW1007\0	umants\1007\0\files\District_2\Projects\036	EG9\CR00\ata\036E69-shr-details.dgn	REVISED - _____			57	138-5,6,7,8,911-2	IROUOJIS	9	2	
	PLOT SCALE = 100.0000' / in.	CHECKED - _____	REVISED - _____			CONTRACT NO. 66E69					
	PLOT DATE = 5/14/2015	DATE - _____	REVISED - _____			ILLINOIS FED. AID PROJECT					

CODE NO.	ITEM	UNIT	TOTAL QUANTITY	CONSTR. CODE
				100% STATE
				ROADWAY
				0005
				RURAL
40600275	BITUMINOUS MATERIALS (PRIME COAT)	POUND	9317	9317
40600400	MIXTURE FOR CRACKS, JOINTS, AND FLANGEWAYS	TON	6.1	6.1
67100100	MOBILIZATION	L SUM	1	1
70300240	TEMPORARY PAVEMENT MARKING - LINE 6"	FOOT	23292	23292
70301000	WORK ZONE PAVEMENT MARKING REMOVAL	SO FT	11648	11648
78008230	POLYUREA PAVEMENT MARKING TYPE I - LINE 6"	FOOT	23461	23461
78100100	RAISED REFLECTIVE PAVEMENT MARKER	EACH	2330	2330
78300100	PAVEMENT MARKING REMOVAL	SO FT	11648	11648
78300200	RAISED REFLECTIVE PAVEMENT MARKER REMOVAL	EACH	2330	2330
X0326218	FIBER-MODIFIED ASPHALT CRACK SEALING	FOOT	93166	93166
X0326880	MESSAGE BOARD VEHICLE DRIVER	HOUR	120	120
X0326907	PORTABLE, VEHICLE MOUNTED, CHANGEABLE MESSAGE SIGN	CAL MO	1	1
X7010410	SPEED DISPLAY TRAILER	CAL MO	1	1
X7010805	TRAFFIC CONTROL AND PROTECTION, STANDARD 701401 (SPECIAL)	L SUM	1	1

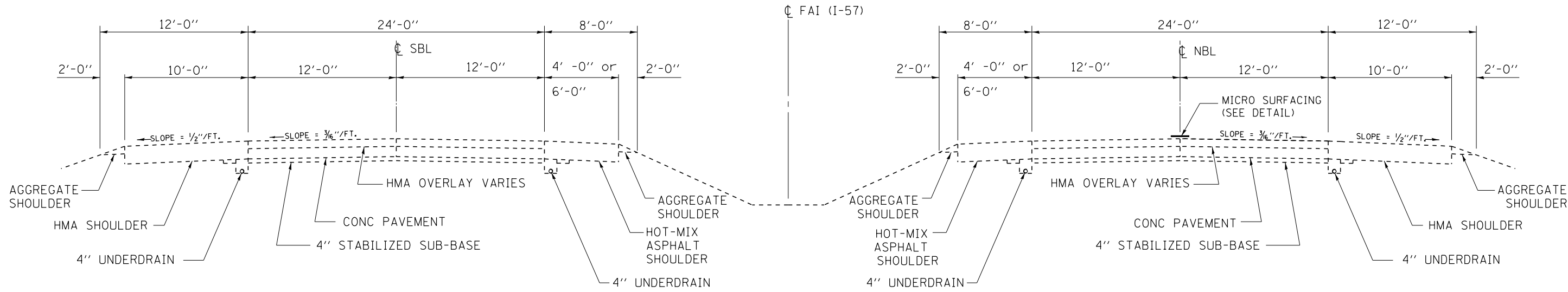
• SPECIALTY ITEM

FILE NAME =	USER NAME = carpenterd	DESIGNED -	REVISED -	<b>STATE OF ILLINOIS DEPARTMENT OF TRANSPORTATION</b>	<b>SUMMARY OF QUANTITIES</b>	F.A.I. RTE.	SECTION	COUNTY	TOTAL SHEETS	SHEET NO.	
p:\1\1084EBID\INTEG\Illinois.gov\PWIDOT\Do	Documents\DOT Offices\District 3\Projects\036	EG9\CADDData\036\EG9-sht-detail.dgn	REVISED -			57	(38-5,6,7,8,9)-2	IRROUDIS	9	3	
	PLOT SCALE = 1/8" = 1' / 1/4"	CHECKED -	REVISED -			SCALE:	SHEET	OF	SHEETS	STA.	TO STA.
	PLOT DATE = 3/14/2015	DATE -	REVISED -			ILLINOIS FED. AID PROJECT CONTRACT NO. 66E69					

CODE NO.	ITEM	UNIT	TOTAL QUANTITY	CONSTR. CODE
				100% STATE
				ROADWAY
				0005
				RURAL
Z0030850	TEMPORARY INFORMATION SIGNING	50 FT	21	21
Z0063804	MICRO-SURFACING, SINGLE PASS, TYPE II, MIXTURE D	50 YD	20704	20704

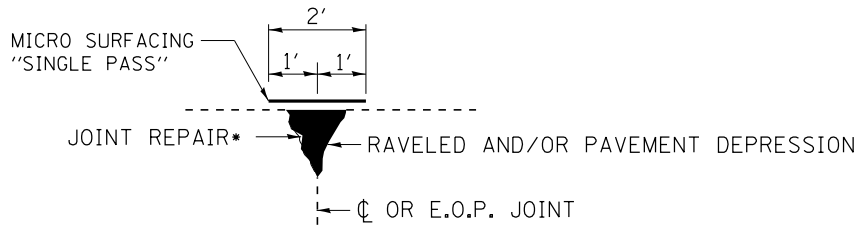
2 • SPECIALTY ITEM

**WORK ONLY ON NORTHBOUND LANES**



**TYPICAL SECTION F.A.I. 57**

STA 201+07 TO STA 740+50  
 OMISSION:  
 SN 038-0223  
 STA 1356+64 TO STA 1358+40  
 SN 038-0152  
 STA 1186+23.5 TO 1187+76.5  
 SN 038-0154  
 STA 962+82 TO 964+43  
 SN 038-0156  
 STA 927+56.5 TO 929+43.5  
 STATION EQUATIONS:  
 1583+84.27BK = 106+00AH



**MICRO-SURFACING DETAIL**

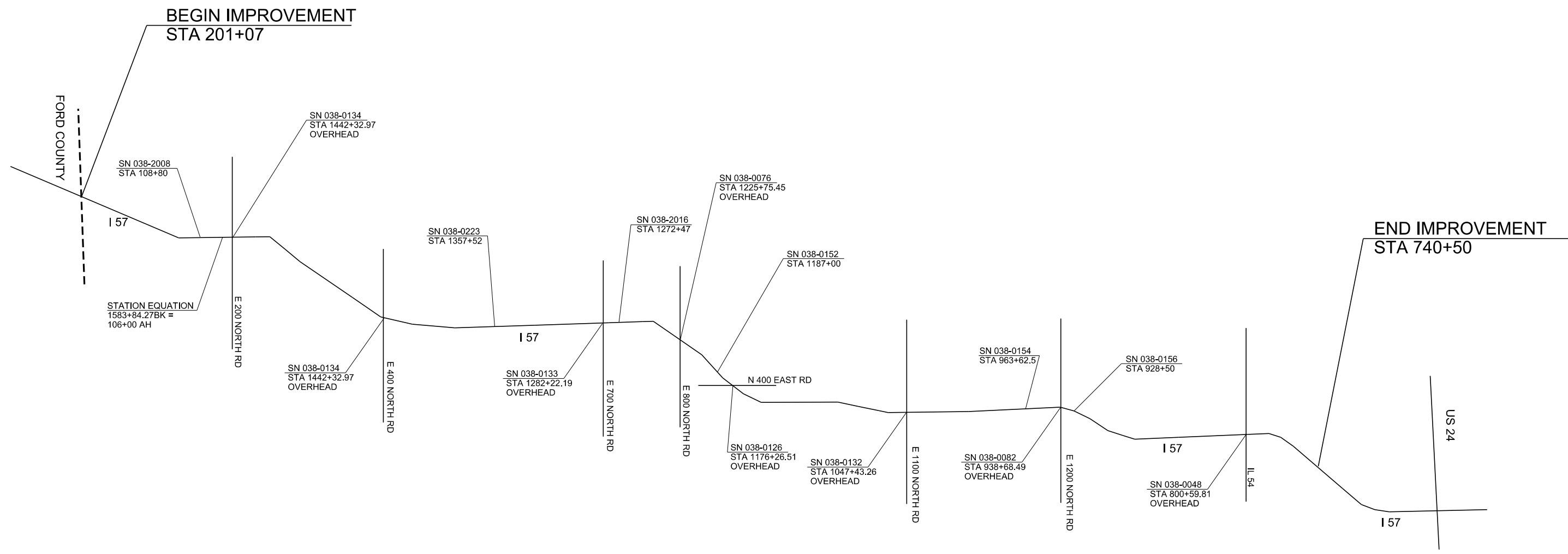
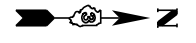
\* FIBER-MODIFIED ASPHALT CRACK SEALING

**NOTES**

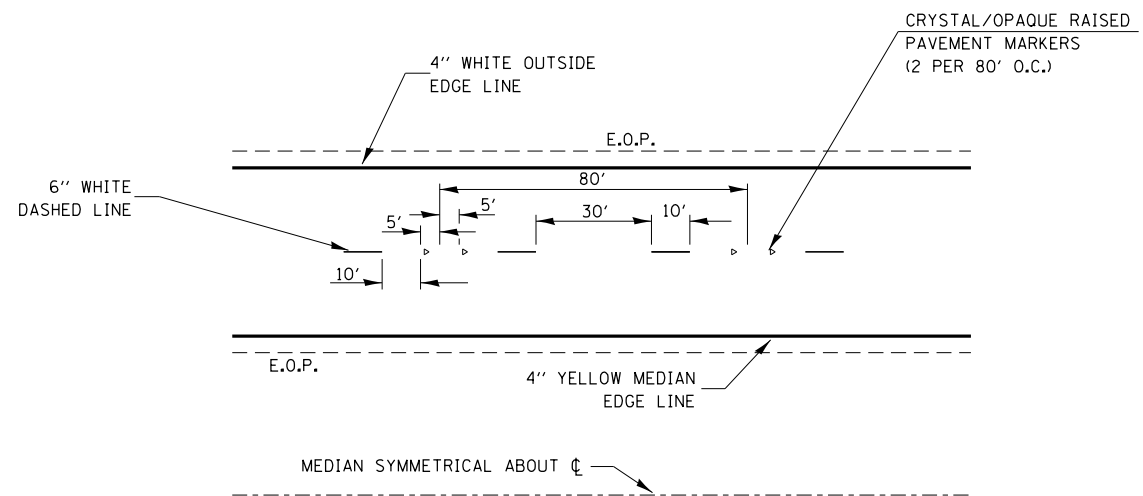
- 1) MICRO-SURFACING SHALL BE LOCATED AT THE CENTERLINE OF PAVEMENT JOINT. ACTUAL LOCATIONS SHALL BE FIELD DETERMINED BY THE ENGINEER PRIOR TO THE CONTRACTOR BEGINNING HIS/HER CONSTRUCTION OPERATIONS.
- 2) THE TEMPORARY STRIPING SHALL BE OFFSET 3' FROM THE CENTERLINE, IN THE DRIVING LANE.
- 3) OFFSET OF THE PERMANENT CENTERLINE PAVEMENT STRIPING SHALL BE FIELD DETERMINED BY THE ENGINEER.

FILE NAME =	USER NAME = carpenterdj	DESIGNED -	REVISED -	<b>STATE OF ILLINOIS DEPARTMENT OF TRANSPORTATION</b>	<b>TYPICAL SECTIONS</b>	F.A.I. RTE. =	SECTION	COUNTY	TOTAL SHEETS	SHEET NO.
pw:\IL\084EBIDINTEG.illinois.gov\PWIDOT\Documents\IDOT Offices\District 3\Projects\0366E69\CADDData\0366E69-shd-details.dgn	PLOT SCALE = 100.0000' / in.	CHECKED -	REVISED -			57	(38-5,6,7,8,9)1-2	IROQUOIS	9	5
PLOT DATE = 5/14/2015	DATE -	REVISED -	REVISED -			CONTRACT NO. 66E69			ILLINOIS FED. AID PROJECT	
SCALE: _____		SHEET _____ OF _____ SHEETS				STA. _____ TO STA. _____				

MAINLINE												
LOCATION STA. TO STA.		LENGTH	TEMP PVMT MARKING LINE 6"	POLYUREA PAVT MARK - LINE 6"	PVMT MARKING REMOVAL	WORK ZONE PVMT MARKING REMOVAL	MIX FOR CRACKS, JOINTS, & FLANGEWAYS	FIBER MOD. ASPHALT CRACK SEALING	BITUMINOUS MATERIALS (PRIME COAT)	MICRO-SURFACING SINGLE PASS TYPE II MIX D	RAISED REFLECTIVE PVMT MARKER	RAISED REFL PVMT MARKER REMOVAL
		FT	FT	FT	SQ FT	SQ FT	TON	FT	POUND	SQ YD	EACH	EACH
NORTHBOUND												
740+50	927+56.5	18706.5	4677	4677	2339	2339	1.2	18707	1871	4157	468	468
927+56.5	929+43.5	OMISSION SN 038-0156		47								
929+43.5	962+82	3338.5	835	835	418	418	0.2	3339	334	742	83	83
962+82	964+43	OMISSION SN 038-0154		40								
964+43	1186+23.5	22180.5	5545	5545	2773	2773	1.5	22181	2218	4929	555	555
1186+23.5	1187+76.5	OMISSION SN 038-0152		38								
1187+76.5	1356+64	16887.5	4222	4222	2111	2111	1.1	16888	1689	3753	422	422
1356+64	1358+40	OMISSION SN 038-0223		44								
1358+40	1583+84.27	22544.27	5636	5636	2818	2818	1.5	22544	2254	5010	564	564
1583+84.27BK	106+00AH	STATION EQUATION										
106+00	201+07	9507	2377	2377	1189	1189	0.6	9507	951	2113	238	238
TOTAL			23292	23461	11648	11648	6.1	93166	9317	20704	2330	2330



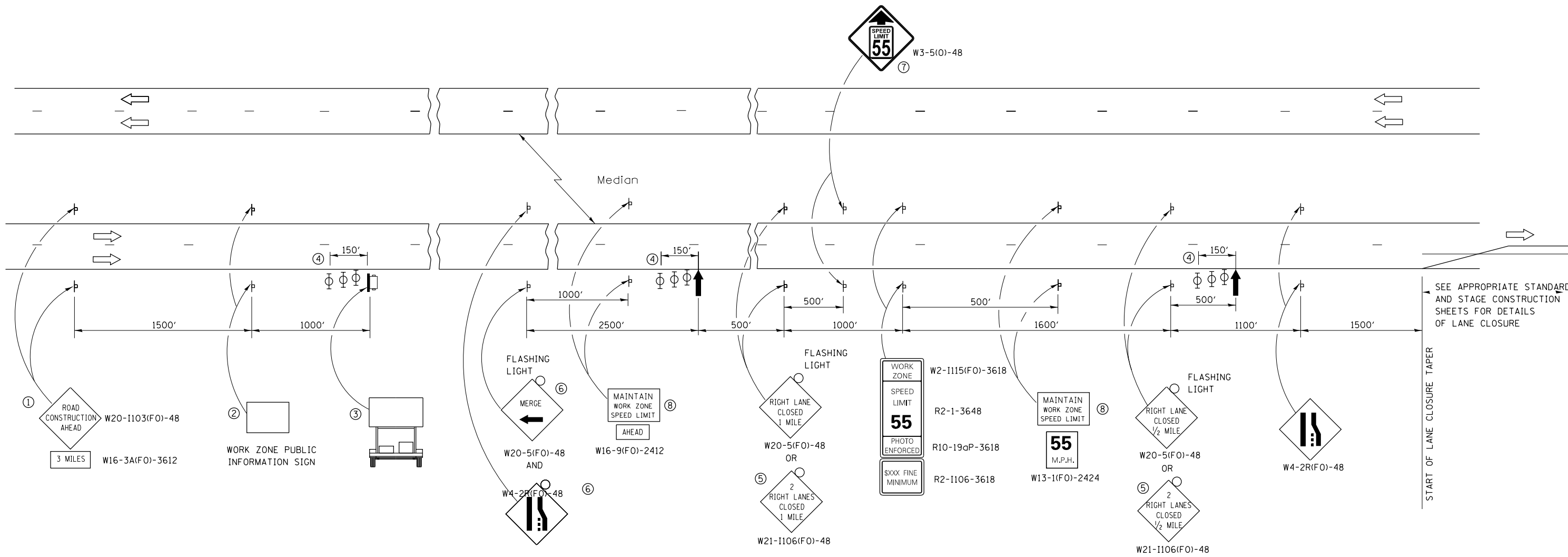
FILE NAME =	USER NAME = carpenterdj	DESIGNED -	REVISED -	<b>STATE OF ILLINOIS DEPARTMENT OF TRANSPORTATION</b>	<b>PROJECT LAYOUT</b>			F.A.I. RTE.	SECTION	COUNTY	TOTAL SHEETS	SHEET NO.
p:\11\084EBIDINTEG.illinois.gov\PIWIDOT\Documents\IDOT Offices\District 3\Projects\0366E69\CADDData\0366E69-shd-details.dgn		CHECKED -	REVISED -					57	(38-5,6,7,8,9)1-2	IROQUOIS	9	7
PLOT SCALE = 100.0000' / 1in.		DATE -	REVISED -		SCALE: _____ SHEET _____ OF _____ SHEETS STA. _____ TO STA. _____			CONTRACT NO. 66E69				
PLOT DATE = 5/14/2015					ILLINOIS FED. AID PROJECT							



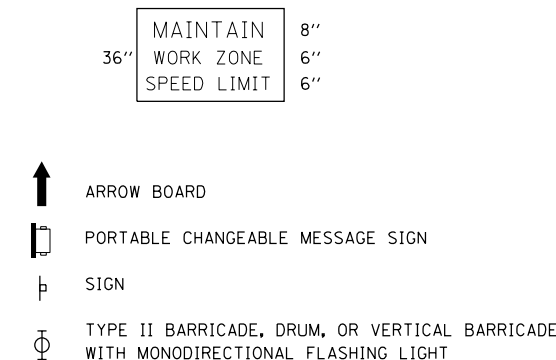
**TYPICAL PAVEMENT MARKINGS**

FILE NAME =	USER NAME = carpenterdj	DESIGNED -	REVISED -	<b>STATE OF ILLINOIS DEPARTMENT OF TRANSPORTATION</b>	<b>DETAILS</b>	F.A.I. RTE.	SECTION	COUNTY	TOTAL SHEETS	SHEET NO.
pw:\IL084EBIDINTEG.illinois.gov\PWIDOT\Documents\IDOT Offices\District 3\Projects\0366E69\CADDData\0366E69-shd-details.dgn		CHECKED -	REVISED -			57	(38-5,6,7,8,9)1-2	IROQUOIS	9	8
PLOT SCALE = 100.0000' / 1in.		DATE -	REVISED -			CONTRACT NO. 66E69			ILLINOIS FED. AID PROJECT	
PLOT DATE = 5/14/2015						SCALE: _____	SHEET NO. ___ OF ___ SHEETS	STA. _____ TO STA. _____		





- ① THE ROAD CONSTRUCTION AHEAD SIGN SHALL BE LOCATED 3 MILES IN ADVANCE OF THE PROJECT LIMITS.
- ② THE MESSAGE AND SIZE OF THE WORK ZONE PUBLIC INFORMATION SIGN SHALL BE AS SPECIFIED BY THE DEPARTMENT.
- ③ TO BE PLACED IN THE MEDIAN WHEN FEASIBLE. THE MESSAGE BOARD SHALL BE USED TO DISPLAY STATUS OF LANES WITHIN THE PROJECT. THE PRIMARY MESSAGES SHALL BE:  
 "RIGHT LANE CLOSED" / " x MILES AHEAD"  
 "LEFT LANE CLOSED" / " x MILES AHEAD"  
 "ALL LANES OPEN"
- ④ THREE, TYPE II BARRICADES, DRUMS, OR VERTICAL BARRICADES AT 50' CENTERS.
- ⑤ THIS SIGN SHALL BE USED WHEN 2 LANES ARE CLOSED.
- ⑥ WHEN THE LEFT LANE IS CLOSED, SWITCH THESE TWO SIGNS AND THE DIRECTION OF THE MERGE ARROW.
- ⑦ THIS SIGN SHALL ONLY BE USED IF THE EXISTING SPEED LIMIT IS GREATER THAN 65 MPH.
- ⑧ 48"x36" FLUORESCENT ORANGE SIGN WITH BLACK LETTERS.  
48"



- ↑ ARROW BOARD
- ☐ PORTABLE CHANGEABLE MESSAGE SIGN
- ⊥ SIGN
- ⊕ TYPE II BARRICADE, DRUM, OR VERTICAL BARRICADE WITH MONODIRECTIONAL FLASHING LIGHT

**GENERAL NOTE:**

THIS STANDARD IS USED WHERE AT ANY TIME A LANE IS CLOSED ON A FREEWAY/EXPRESSWAY.

WHEN THE LEFT LANE IS CLOSED, LEFT LANE CLOSED SIGNS SHALL BE SUBSTITUTED FOR THE RIGHT LANE CLOSED SIGNS.

THE FIRST TWO SIGNS AND THE MESSAGE BOARD ARE STATIONARY. THE OTHER SIGNS AND ARROWBOARDS SHALL BE MOVED AS NECESSARY TO MAINTAIN THE REQUIRED DISTANCE FROM THE START OF THE LANE CLOSURE TAPER(S).

SEE SPECIAL PROVISIONS.

ALL DIMENSIONS ARE IN INCHES UNLESS OTHERWISE SHOWN.

FILE NAME =	USER NAME = carpenterdj	DESIGNED -	REVISED -	<b>STATE OF ILLINOIS DEPARTMENT OF TRANSPORTATION</b>	<b>STANDARD 701400 (SPECIAL)</b>	F.A.I. RTE.	SECTION	COUNTY	TOTAL SHEETS	SHEET NO.	
pw:\1L084EBIDINTEG.illinois.gov\PIWIDOT\Documents\IDOT Offices\District 3\Projects\0366E69\CADDData\0366E69-sht-details.dgn		CHECKED -	REVISED -			57	(38-5,6,7,8,9)1-2	IROQUOIS	9	9	
PLOT SCALE = 100.0000' / 1in.		DATE -	REVISED -			CONTRACT NO. 66E69					
PLOT DATE = 5/14/2015						ILLINOIS FED. AID PROJECT					