

STATE OF ILLINOIS
DEPARTMENT OF TRANSPORTATION
DIVISION OF HIGHWAYS
PROPOSED
HIGHWAY PLANS

F.A.P. 649 (IL 251) / F.A.S. 1360 (IL 251)
SECTION (67,651)

CULVERT REPAIR
MARSHALL AND WOODFORD COUNTIES

C-94-075-15

INDEX OF SHEETS

1. COVER SHEET
2. GENERAL NOTES, COMMITMENTS, JOB SPECIFIC NOTES
3. SUMMARY OF QUANTITIES
4. SCHEDULES OF QUANTITIES
- 5.-6. TYPICAL SECTIONS
7. IL 251 LINE DIAGRAM WOODFORD COUNTY
8. IL 251 LINE DIAGRAM MARSHALL COUNTY

HIGHWAY STANDARDS

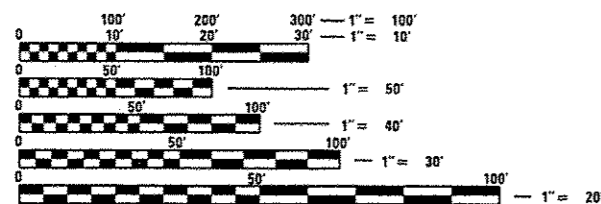
- 701001-02
- 701006-05
- 701201-04
- 701901-04

TRAFFIC DATA

ADT	MU	SU
IL 251 (2013) Woodford Co		
1,200	8.33%	10%
IL 251 (2013) Marshall Co		
1,100	7.27%	6.36%

PROJECT DESCRIPTION

WORK ON THIS PROJECT CONSISTS OF INSTALLATION OF CURED-IN-PLACE PIPE CULVERT LINER AT TWO LOCATIONS ON IL 251 IN MARSHALL AND WOODFORD COUNTIES

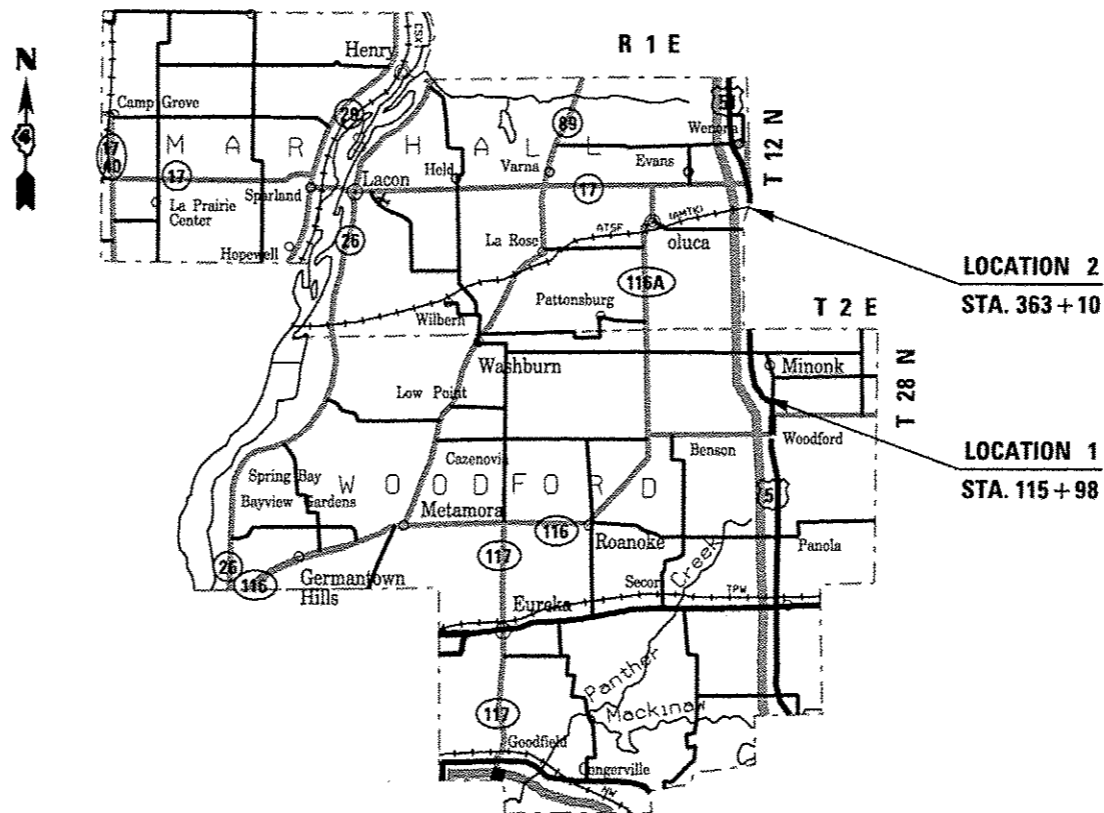
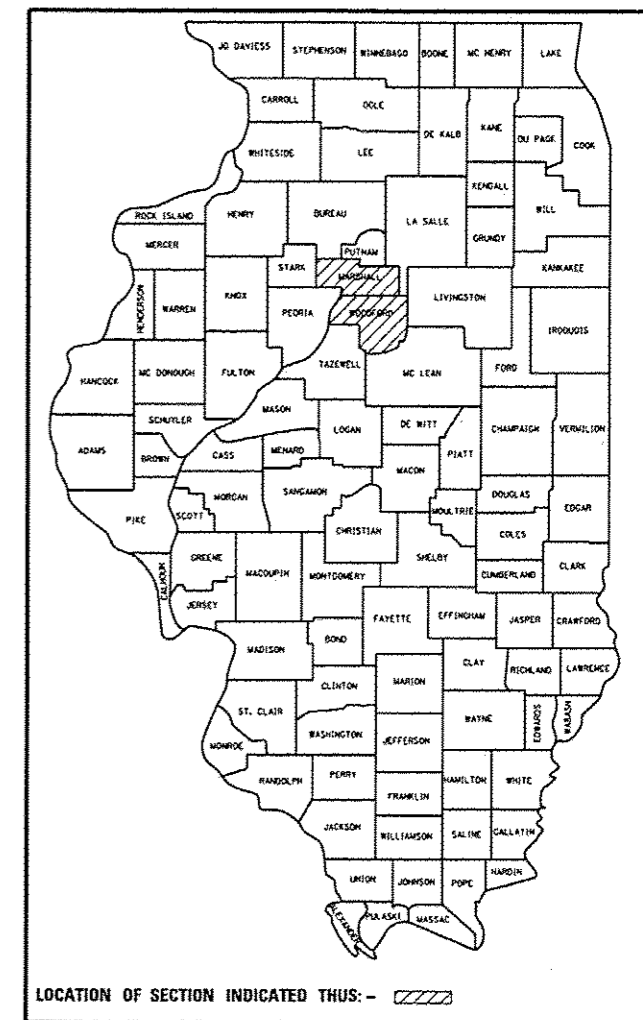


FULL SIZE PLANS HAVE BEEN PREPARED USING STANDARD ENGINEERING SCALES. REDUCED SIZED PLANS WILL NOT CONFORM TO STANDARD SCALES. IN MAKING MEASUREMENTS ON REDUCED PLANS, THE ABOVE SCALES MAY BE USED.

J.U.L.I.E.
 JOINT UTILITY LOCATION INFORMATION FOR EXCAVATION
 1-800-892-0123
 OR 811

PROJECT ENGINEER CHRISTOPHER MAUSHARD (309)671-3453
PROJECT MANAGER MIKE MOHAMED (309)671-3462
CONTRACT NO. 68C56
CATALOG NO. 035127-01D

GROSS LENGTH = NA
 NET LENGTH = NA



STATE OF ILLINOIS
 DEPARTMENT OF TRANSPORTATION
 DIVISION OF HIGHWAYS

SUBMITTED May 12 20 15
[Signature]
 DEPUTY DIRECTOR OF HIGHWAYS, REGION ENGINEER

June 26 20 15
[Signature] PE, ka
 ENGINEER OF DESIGN AND ENVIRONMENT

June 26 20 15
[Signature] PE, ka
 DIRECTOR OF HIGHWAYS, CHIEF ENGINEER

PRINTED BY THE AUTHORITY
OF THE STATE OF ILLINOIS

COMMITMENTS

COMMITMENTS ARE NOT TO BE ALTERED WITHOUT THE WRITTEN APPROVAL OF ALL PARTIES TO WHICH THE COMMITMENT WAS MADE.

NO COMMITMENTS HAVE BEEN MADE ON THIS PROJECT

GENERAL NOTES

ORDERING LENGTH CONFIRMATION - DRAINAGE ITEMS

THE CONTRACTOR SHALL CONSULT WITH THE ENGINEER IN REGARD TO THE EXACT LENGTH OF BOX/PIPE CULVERTS, STORM SEWERS, AND/OR PIPE DRAINS REQUIRED PRIOR TO ORDERING THESE ITEMS.

FILE NAME : 68C56 - Culvert Lining.dgn	USER NAME : Keithbr	DESIGNED -	REVISED -	STATE OF ILLINOIS DEPARTMENT OF TRANSPORTATION	COMMITMENTS, GENERAL NOTES, JOB SPECIFIC NOTES	F.A.P. F.A.S.	SECTION	COUNTY	TOTAL SHEETS	SHEET NO.
		DRAWN -	REVISED -			RTE.	(67,651)	MARSHALL WOODRIF	B	2
		CHECKED -	REVISED -			649				
Default		DATE -	REVISED -			1389				CONTRACT NO. 68C56
		PLOT SCALE : 100.0000' / 1" =		SCALE:		SHEET 1 OF 1 SHEETS		STA. TO STA.		ILLINOIS FED. AID PROJECT

SUMMARY OF QUANTITIES

CODE NO.	PAY ITEM	UNIT	TOTAL QUANTITY	0040 WOODFORD 100% STATE	0040 MARSHALL 100% STATE
67100100	MOBILIZATION	L SUM	1	0.5	0.5
70100450	TRAFFIC CONTROL AND PROTECTION, STANDARD 701201	L SUM	1		1
X0326662	CURED-IN-PLACE PIPE LINER, 24"	FOOT	60	60	
X0326664	CURED-IN-PLACE PIPE LINER, 36"	FOOT	211		211
Z0048665	RAILROAD PROTECTIVE LIABILITY INSURANCE	L SUM	1		1

5

TABULATION OF CURED-IN-PLACE PIPE LINER QUANTITIES						
LOCATION	LOCATION NO.	CULVERT TYPE	CULVERT SIZE	FILL HEIGHT	CURED-IN-PLACE PIPE LINER, 24"	CURED-IN-PLACE PIPE LINER, 36"
			IN	FT	FT	FT
IL 251 WOODFORD COUNTY						
STA. 115+98	1	CMP	24	4.2	60	
IL 251 MARSHALL COUNTY						
STA. 364+09.50	2	CMP	36	6.5		211
TOTAL					60	211

RAILROAD PROTECTIVE LIABILITY INSURANCE	
LOCATION	L SUM
MARSHALL COUNTY	1
TOTAL	1

TRAFFIC CONTROL & PROTECTION STANDARDS	
LOCATION	STD. 701201
	L SUM
MARSHALL COUNTY	1
TOTAL	1

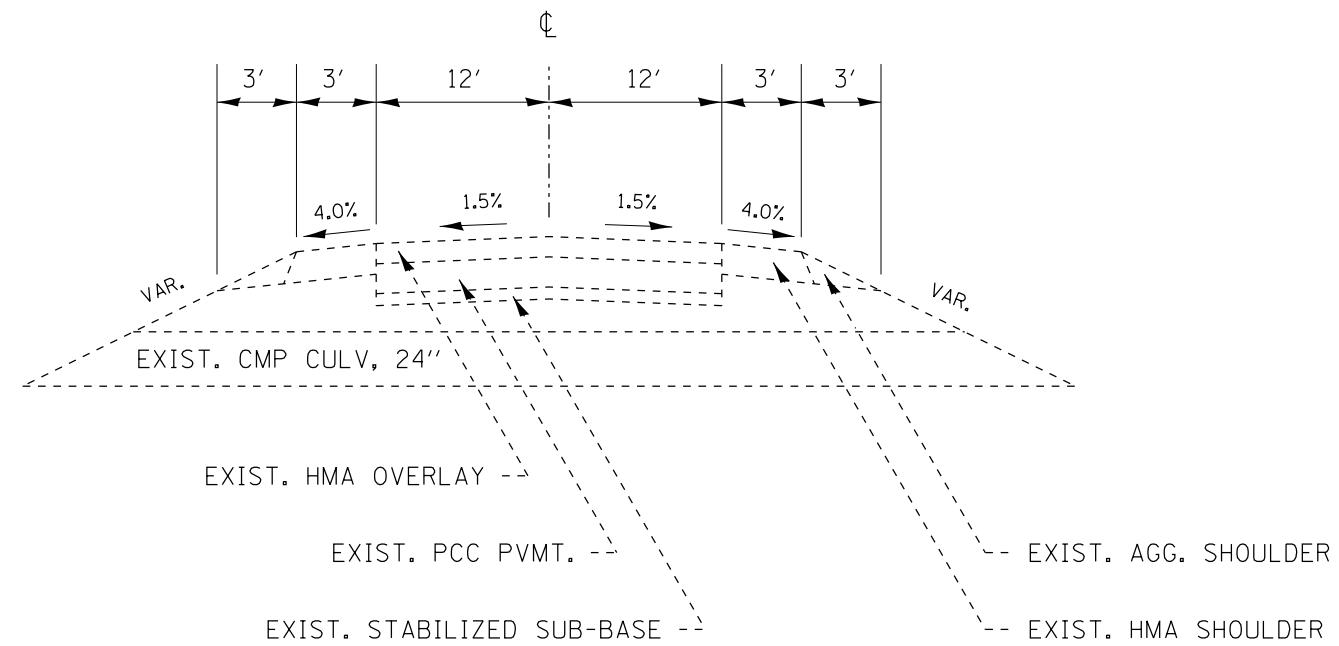
MOBILIZATION	
LOCATION	L SUM
WOODFORD COUNTY	0.5
MARSHALL COUNTY	0.5
TOTAL	1

FILE NAME = 68C56 - Culvert Lining.dgn	USER NAME = keithbr	DESIGNED -	REVISED -
Default	PLOT DATE = 5/19/2015	DRAWN -	REVISED -
		CHECKED -	REVISED -
		DATE -	REVISED -

**STATE OF ILLINOIS
DEPARTMENT OF TRANSPORTATION**

SCHEDULES OF QUANTITIES			
SCALE:	SHEET 1 OF 1 SHEETS	STA.	TO STA.

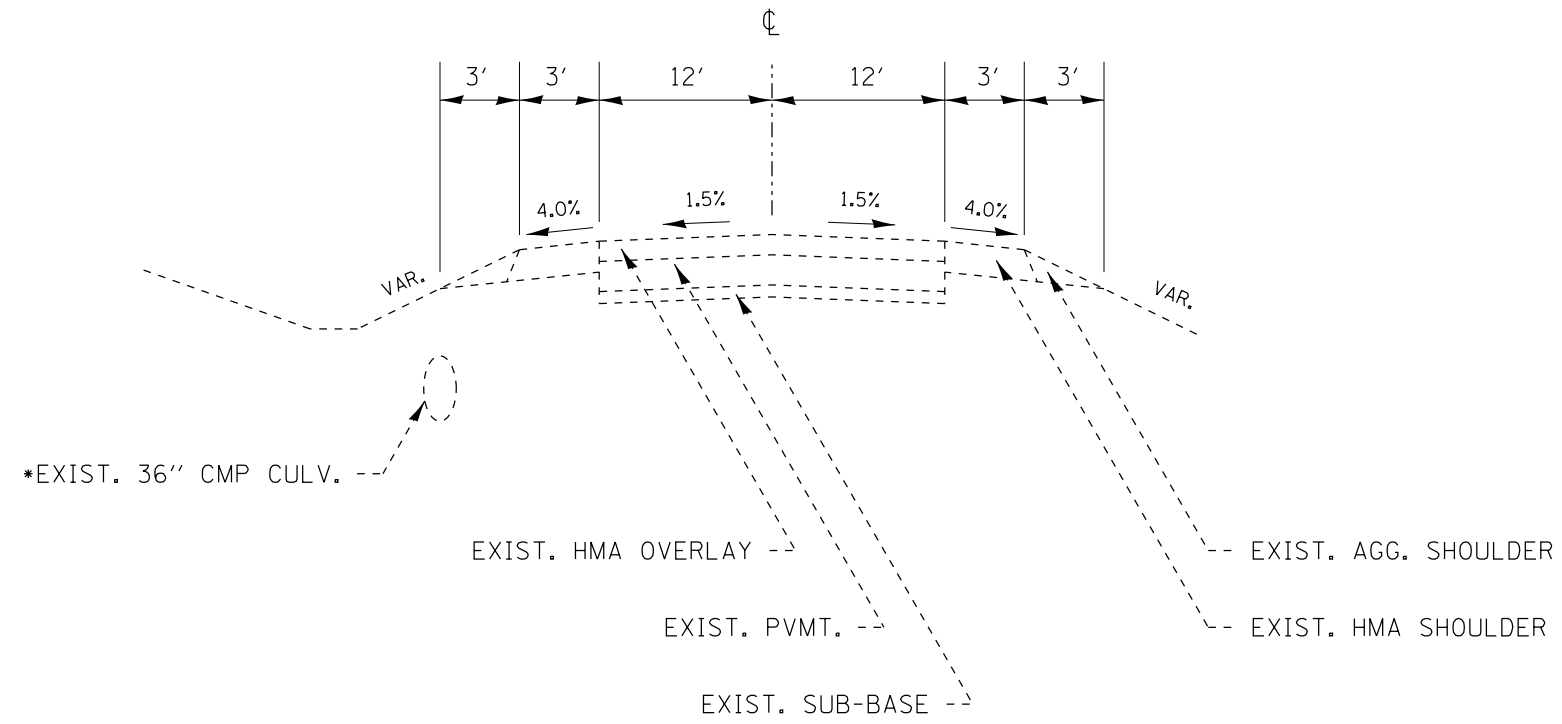
F.A.P. F.A.S.	SECTION	COUNTY	TOTAL SHEETS	SHEET NO.
RTE. 649 1360	(67,65)I	MARSHALL WOODFORD	8	4
CONTRACT NO. 68C56			ILLINOIS FED. AID PROJECT	



IL 251 WOODFORD COUNTY
TYPICAL SECTION

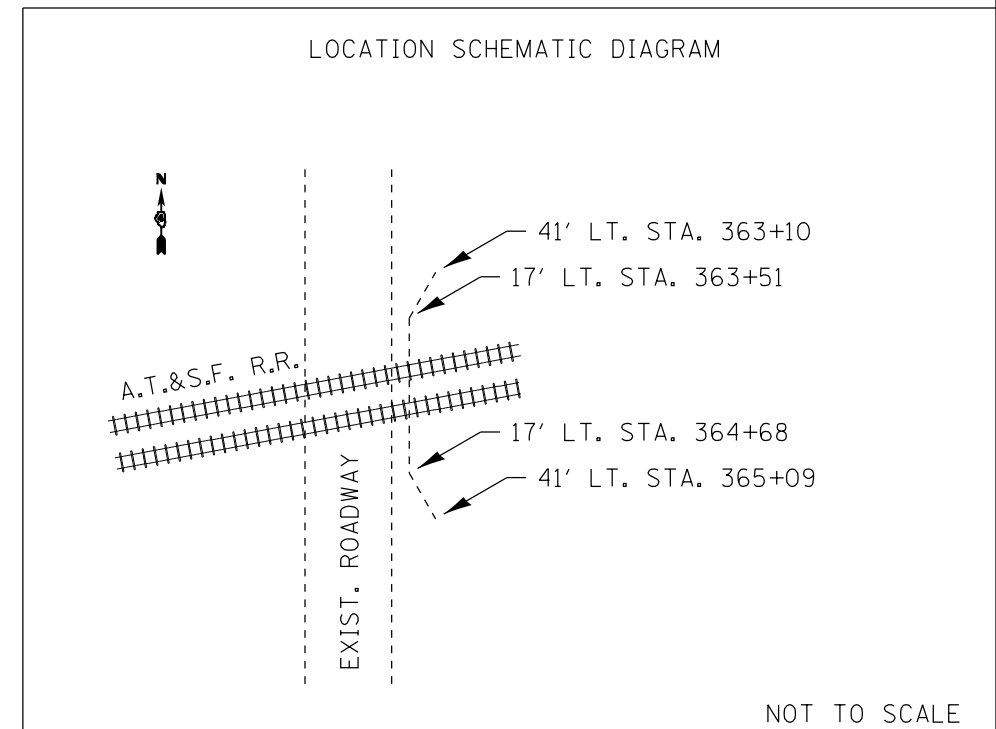
LOCATION 1

FILE NAME = 68C56 - Culvert Lining.dgn	USER NAME = keithbr	DESIGNED -	REVISED -	STATE OF ILLINOIS DEPARTMENT OF TRANSPORTATION	TYPICAL SECTIONS			F.A.P. F.A.S.	SECTION	COUNTY	TOTAL SHEETS	SHEET NO.			
Default	PLOT SCALE = 100.0000' / in.	CHECKED -	REVISED -		SCALE:	SHEET 7	OF 8	SHEETS	STA.	TO STA.	649 1360	67,651	MARSHALL WOODFORD	8	5
	PLOT DATE = 5/19/2015	DATE -	REVISED -								CONTRACT NO. 68C56				
											ILLINOIS FED. AID PROJECT				



IL 251 MARSHALL COUNTY
TYPICAL SECTION

LOCATION 2



NOT TO SCALE

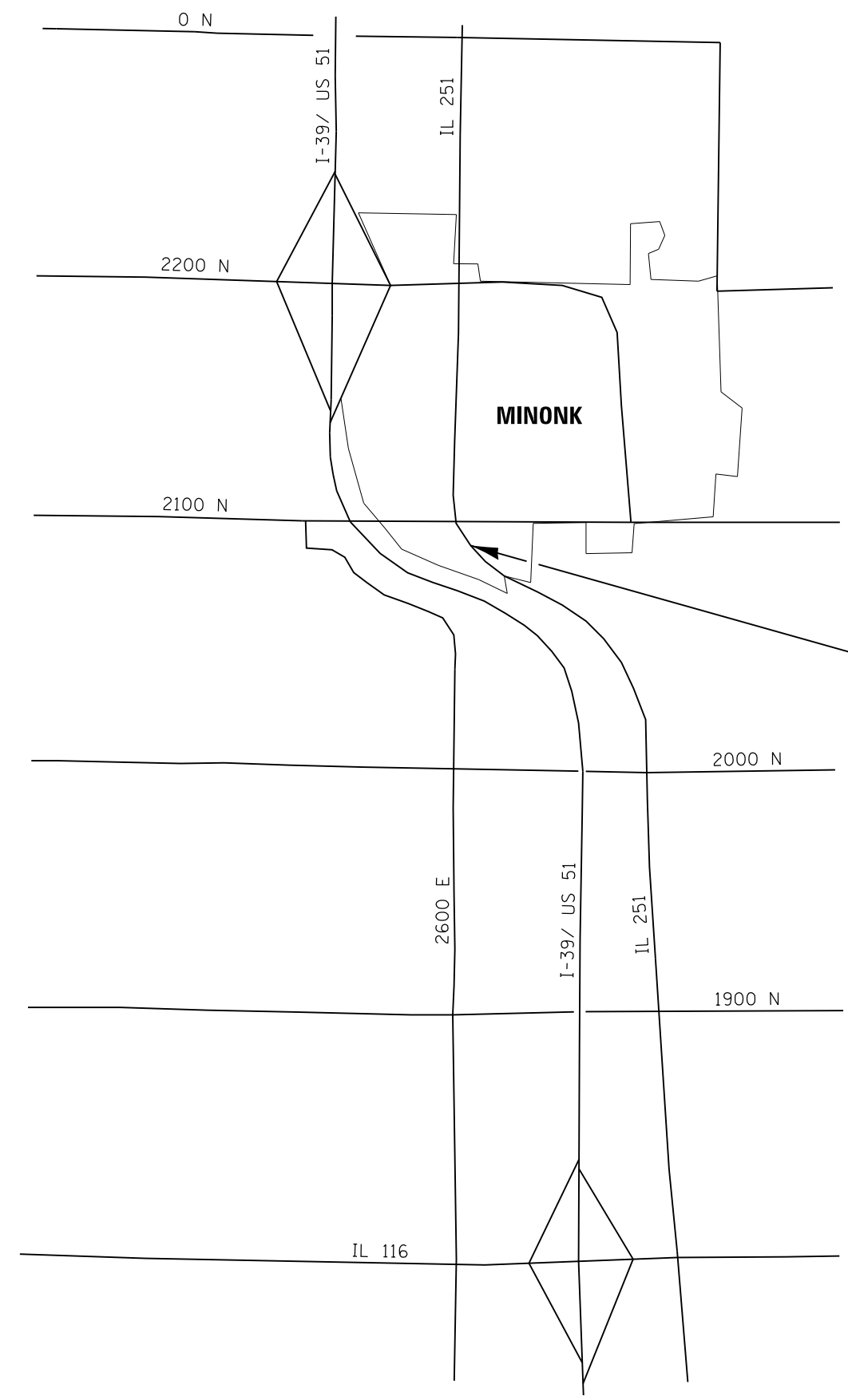
FILE NAME = 68C56 - Culvert Lining.dgn	USER NAME = keithbr	DESIGNED -	REVISED -
Default	PLOT SCALE = 100.0000' / in.	DRAWN -	REVISED -
	PLOT DATE = 5/19/2015	CHECKED -	REVISED -
		DATE -	REVISED -

STATE OF ILLINOIS
DEPARTMENT OF TRANSPORTATION

TYPICAL SECTIONS

SCALE: SHEET 8 OF 8 SHEETS STA. TO STA.

F.A.P. F.A.S.	SECTION	COUNTY	TOTAL SHEETS	SHEET NO.
649 1360	(67,65)I	MARSHALL WOODFORD	8	6
CONTRACT NO. 68C56				
ILLINOIS FED. AID PROJECT				



LOCATION 1
 IL 251 STA. 115+98
 MILE POST 17.130
 CROSS ROAD
 24" CMP CULVERT
 LENGTH = 60'
 FILL HEIGHT = 4.2'

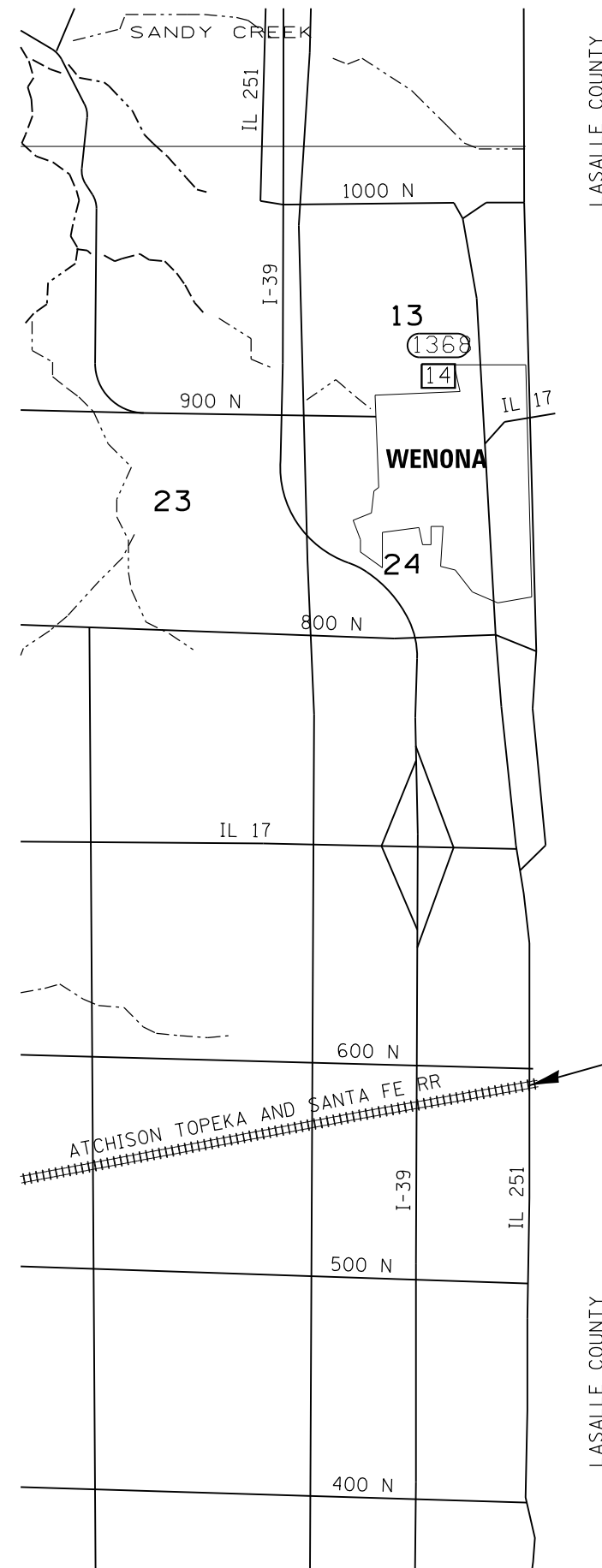
FILE NAME = 68C56 - Culvert Lining.dgn	USER NAME = keithbr	DESIGNED -	REVISED -
		DRAWN -	REVISED -
	PLOT SCALE = 100.0000' / in.	CHECKED -	REVISED -
	PLOT DATE = 5/19/2015	DATE -	REVISED -

STATE OF ILLINOIS
DEPARTMENT OF TRANSPORTATION

IL 251 LINE DIAGRAM
WOODFORD COUNTY

NOT TO SCALE SHEET 1 OF 1 SHEETS STA. TO STA.

F.A.P. F.A.S.	SECTION	COUNTY	TOTAL SHEETS	SHEET NO.
RTE. 649 1360	(67,65)I	MARSHALL WOODFORD	8	7
CONTRACT NO. 68C56			ILLINOIS FED. AID PROJECT	



LOCATION 2
 IL 251
 41' LT. STA. 363+10 TO
 17' LT. STA. 363+51 TO
 17' LT. STA. 364+68 TO
 41' LT. STA. 365+09
 36" CMP CULVERT
 LENGTH = 211'
 FILL HEIGHT = 6.5'

NOTES:
 *THE CULVERT IS LOCATED ON THE EAST SIDE OF THE ROADWAY AND RUNS PARALLEL TO THE ROADWAY.
 **THE CULVERT HAS TWO 30° ELBOWS.
 SEE LOCATION SCHEMATIC DIAGRAM SHEET 6

FILE NAME = 68C56 - Culvert Lining.dgn	USER NAME = keithbr	DESIGNED -	REVISED -
		DRAWN -	REVISED -
	PLOT SCALE = 100.0000' / in.	CHECKED -	REVISED -
	PLOT DATE = 5/19/2015	DATE -	REVISED -

**STATE OF ILLINOIS
 DEPARTMENT OF TRANSPORTATION**

**IL 251 LINE DIAGRAM
 MARSHALL COUNTY**

NOT TO SCALE SHEET 1 OF 1 SHEETS STA. TO STA.

F.A.P. F.A.S.	SECTION	COUNTY	TOTAL SHEETS	SHEET NO.
649 1360	(67,65)I	MARSHALL WOODFORD	8	8
CONTRACT NO. 68C56			ILLINOIS FED. AID PROJECT	