

**THOUVENOT, WADE & MOERCHEN, INC.**  
ENGINEERS • SURVEYORS • PLANNERS

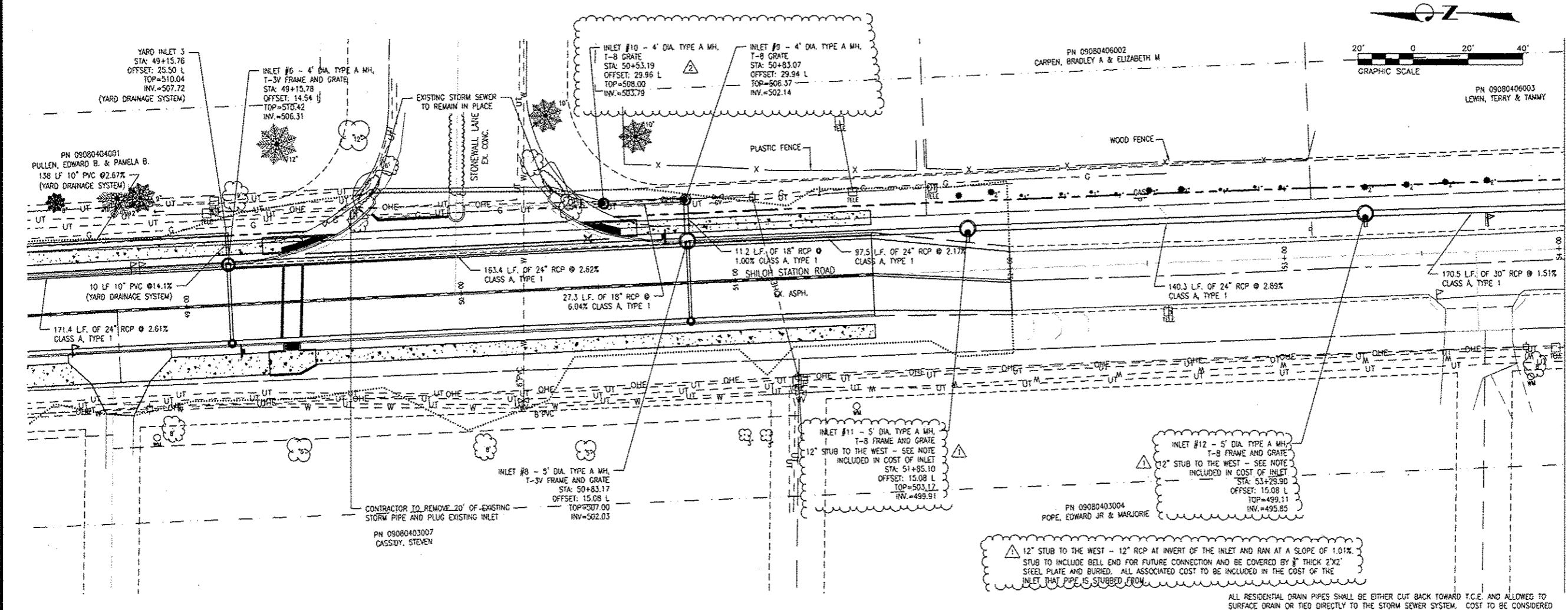


- CORPORATE OFFICE**  
4940 OLD COLLINSVILLE RD.  
SWANSEA, ILLINOIS 62226  
TEL (618) 624-4488  
FAX (618) 624-6688  
corp@twm-inc.com
- WATERLOO OFFICE**  
113 SOUTH MAIN STREET  
WATERLOO, ILLINOIS 62298  
TEL (618) 939-5050  
FAX (618) 939-3938  
waterloo@twm-inc.com
- EDWARDSVILLE OFFICE**  
1015B CENTURY DRIVE  
EDWARDSVILLE, ILLINOIS 62025  
TEL (618) 656-4040  
FAX (618) 656-4343  
edwardsville@twm-inc.com
- ST. CHARLES OFFICE**  
400 N. 5TH STREET, SUITE 101  
ST. CHARLES, MISSOURI 63301  
TEL (636) 724-8300  
FAX (636) 724-8304  
stlouis@twm-inc.com

PROFESSIONAL REGISTRATIONS	LICENSE NO.
ILLINOIS PROFESSIONAL DESIGN FIRM	184-091220
PROFESSIONAL ENGINEERING CORP.	62-033370
PROFESSIONAL STRUCTURAL ENGR. CORP.	81-002202
ILLINOIS PROF. LAND SURVEYING CORP.	048-000203
MISSOURI PROFESSIONAL ENGR. CORP.	NC 001528
MISSOURI LAND SURVEYING CORP.	NC 000348

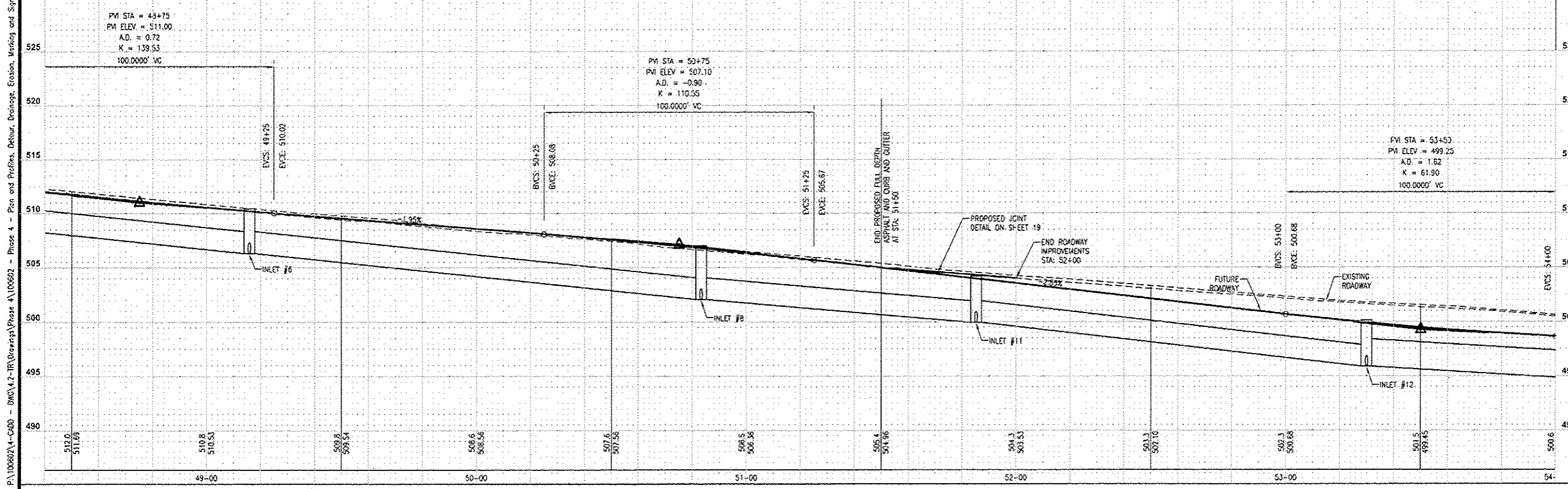
Signature: \_\_\_\_\_  
Signature Date: \_\_\_\_\_  
Expiration Date: \_\_\_\_\_

**STATEMENT OF RESPONSIBILITY**  
I hereby confirm that the document herein to be authorized by my seal is restricted to this sheet, and I hereby disclaim any responsibility for all other drawings, specifications, estimates, reports or other documents or instruments relating to or intended to be utilized for any other part of the architectural, engineering or survey project.



12" STUB TO THE WEST - 12" RCP AT INVERT OF THE INLET AND RAN AT A SLOPE OF 1.01%  
STUB TO INCLUDE BELL END FOR FUTURE CONNECTION AND BE COVERED BY 8" THICK 2'X2'  
STEEL PLATE AND BURIED. ALL ASSOCIATED COST TO BE INCLUDED IN THE COST OF THE  
INLET THAT PIPE IS STUBBED FROM.

ALL RESIDENTIAL DRAIN PIPES SHALL BE EITHER CUT BACK TOWARD T.C.E. AND ALLOWED TO  
SURFACE DRAIN OR TIED DIRECTLY TO THE STORM SEWER SYSTEM. COST TO BE CONSIDERED  
INCIDENTAL TO THE COST OF STORM SEWER.



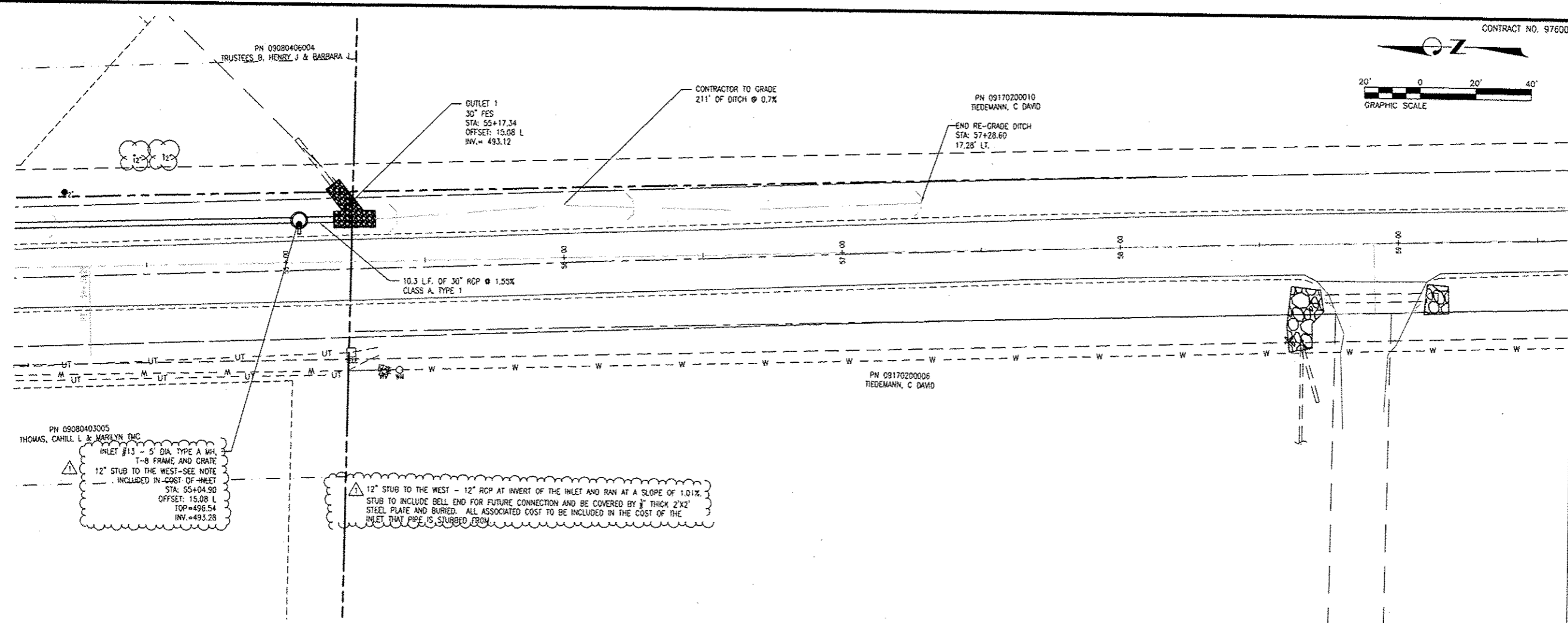
**SHILOH STATION ROAD PHASE 4  
DRAINAGE PLAN AND EAST PROFILE  
14-00011-04-PW**

**SHILOH STATION ROAD  
RECONSTRUCTION  
VILLAGE OF SHILOH  
ST. CLAIR COUNTY, ILLINOIS**

REV	DATE	DESCRIPTION
1	7/10/15	ADDED 12" STUB TO THE WEST NOTE
2	7/10/15	CHANGED INLET #9 AND INLET #10 TO T-8 GRATE

DESIGNED BY:	NTS	SHEET
CHECKED BY:	NTS	12
APPROVED BY:		OF 23 SHEETS
PROJECT NUMBER:	PROJECT DESCRIPTION	
	T01100602	
<input checked="" type="checkbox"/> ISSUED FOR REVIEW	<input type="checkbox"/> ISSUED FOR BIDDING	
<input type="checkbox"/> ISSUED FOR CONSTR.	<input type="checkbox"/> RECORD DRAWING	

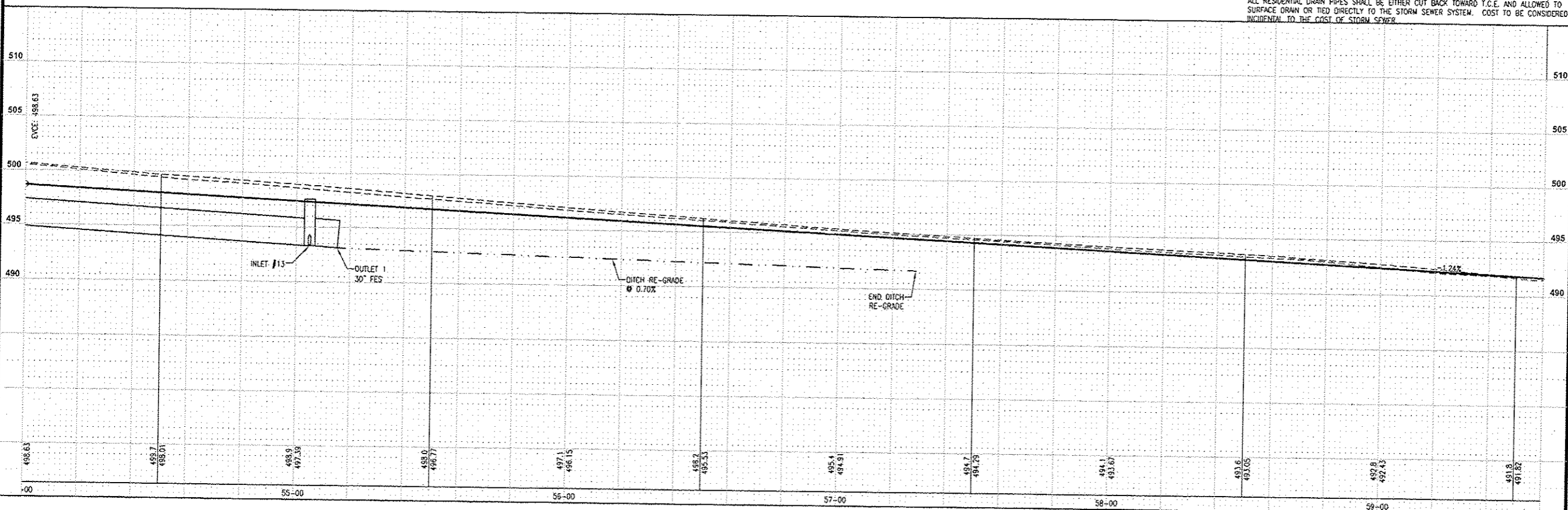
P:\100602\4-CADD - DWG\4.2-TRA\Drawings\Phase 4\100602 - Phase 4 - Plan and Profiles, Detail, Drainage, Erosion, Marking and Signage, Worshiping.dwg



PN 09080403005  
THOMAS, CAHILL L & MARILYN DMC  
INLET #15 - 5' DIA. TYPE A MH  
T-8 FRAME AND CRATE  
12" STUB TO THE WEST - SEE NOTE  
INCLUDED IN COST OF INLET  
STA: 55+04.90  
OFFSET: 15.08 L  
TOP=496.54  
INV.=493.28

12" STUB TO THE WEST - 12" RCP AT INVERT OF THE INLET AND RAN AT A SLOPE OF 1.01%.  
STUB TO INCLUDE BELL END FOR FUTURE CONNECTION AND BE COVERED BY 1/2" THICK 2'X2'  
STEEL PLATE AND BURIED. ALL ASSOCIATED COST TO BE INCLUDED IN THE COST OF THE  
INLET THAT PIPE IS STUBBED FROM.

ALL RESIDENTIAL DRAIN PIPES SHALL BE EITHER CUT BACK TOWARD T.C.E. AND ALLOWED TO  
SURFACE DRAIN OR TIED DIRECTLY TO THE STORM SEWER SYSTEM. COST TO BE CONSIDERED  
INCIDENTAL TO THE COST OF STORM SEWER.



**THOUVENOT,  
WADE &  
MOERCHEN, INC.**  
ENGINEERS • SURVEYORS • PLANNERS



**CORPORATE OFFICE**  
4940 OLD COLLINSVILLE RD.  
SWANSEA, ILLINOIS 62226  
TEL (618) 624-4488  
FAX (618) 624-6688  
corp@twm-inc.com

**WATERLOO OFFICE**  
113 SOUTH MAIN STREET  
WATERLOO, ILLINOIS 62298  
TEL (618) 939-5050  
FAX (618) 939-3938  
waterloo@twm-inc.com

**EDWARDSVILLE OFFICE**  
1015B CENTURY DRIVE  
EDWARDSVILLE, ILLINOIS 62025  
TEL (618) 656-4040  
FAX (618) 656-4343  
edwardsville@twm-inc.com

**ST. CHARLES OFFICE**  
400 N. 5TH STREET, SUITE 101  
ST. CHARLES, MISSOURI 63301  
TEL (636) 724-8300  
FAX (636) 724-8304  
stlouis@twm-inc.com

PROFESSIONAL REGISTRATIONS	LICENSE NO.
ILLINOIS PROFESSIONAL DESIGN FIRM	184-001220
PROFESSIONAL ENGINEERING CORP.	62-053370
PROFESSIONAL STRUCTURAL ENGR. CORP.	61-002202
ILLINOIS PROF. LAND SURVEYING CORP.	048-000029
MISSOURI PROFESSIONAL ENGR. CORP.	NE 001528
MISSOURI LAND SURVEYING CORP.	NE 000346

Signature: \_\_\_\_\_  
Expiration Date: \_\_\_\_\_  
I hereby confirm that the document herein to be  
authorized by my seal is restricted to this sheet,  
and I hereby disclaim any responsibility for all other  
drawings, specifications, estimates, reports or other  
documents or instruments existing in or intended to  
be utilized for any other part of the architectural,  
engineering or survey project.

**STATEMENT OF RESPONSIBILITY**  
I hereby confirm that the document herein to be  
authorized by my seal is restricted to this sheet,  
and I hereby disclaim any responsibility for all other  
drawings, specifications, estimates, reports or other  
documents or instruments existing in or intended to  
be utilized for any other part of the architectural,  
engineering or survey project.

TITLE: **SHILOH STATION ROAD PHASE 4  
DRAINAGE PLAN AND EAST PROFILE**  
PROJECT: **SHILOH STATION ROAD  
RECONSTRUCTION  
VILLAGE OF SHILOH  
ST. CLAIR COUNTY, ILLINOIS**

REV.	DATE	DESCRIPTION
1	7/10/15	ADDED 12" STUB TO THE WEST NOTE

DRAWN BY: NTS	SHEET
DESIGNED BY: NTS	<b>13</b>
CHECKED BY:	OF 23 SHEETS
APPROVED BY:	PROJECT DESCRIPTION
PROJECT NUMBER: T01100602	

ISSUED FOR REVIEW     ISSUED FOR BIDDING  
 ISSUED FOR CONSTR.     RECORD DRAWINGS

P:\100602\4-CADD - DMC\4.7-RV\Drawings\Phase 4 - Plan and Profile\Drawings\Phase 4 - Plan and Profile.dwg