

07-31-2026 LETTING ITEM 059

STATE OF ILLINOIS
DEPARTMENT OF TRANSPORTATION
DIVISION OF HIGHWAYS
**PLANS FOR PROPOSED
SURFACE TRANSPORTATION/RURAL PROGRAM
MASON COUNTY
FAS 461
SECTION 25-00048-00-PP
COUNTY HIGHWAY 4, COUNTY HIGHWAY 13
PROJECT NO. NUMA(444)
JOB NO. C-96-014-27**

| FAS RTE. NO. | SECTION | COUNTY | TOTAL SHEETS | SHEET NO. |
|--------------------|----------------|--------|--------------|-----------|
| 461 | 25-00048-00-PP | MASON | 6 | 1 |
| CONTRACT NO. 93860 | | | | |

INDEX OF SHEETS

- 1 COVER SHEET
- 2 GENERAL NOTES, LEGEND, PAVEMENT DESIGN INFORMATION, SUMMARY OF QUANTITIES
- 3-4 TYPICAL CROSS SECTIONS
- 5 HORIZONTAL CURVE DATA
- 6 SCHEDULE OF QUANTITIES

REQUIRED STANDARDS

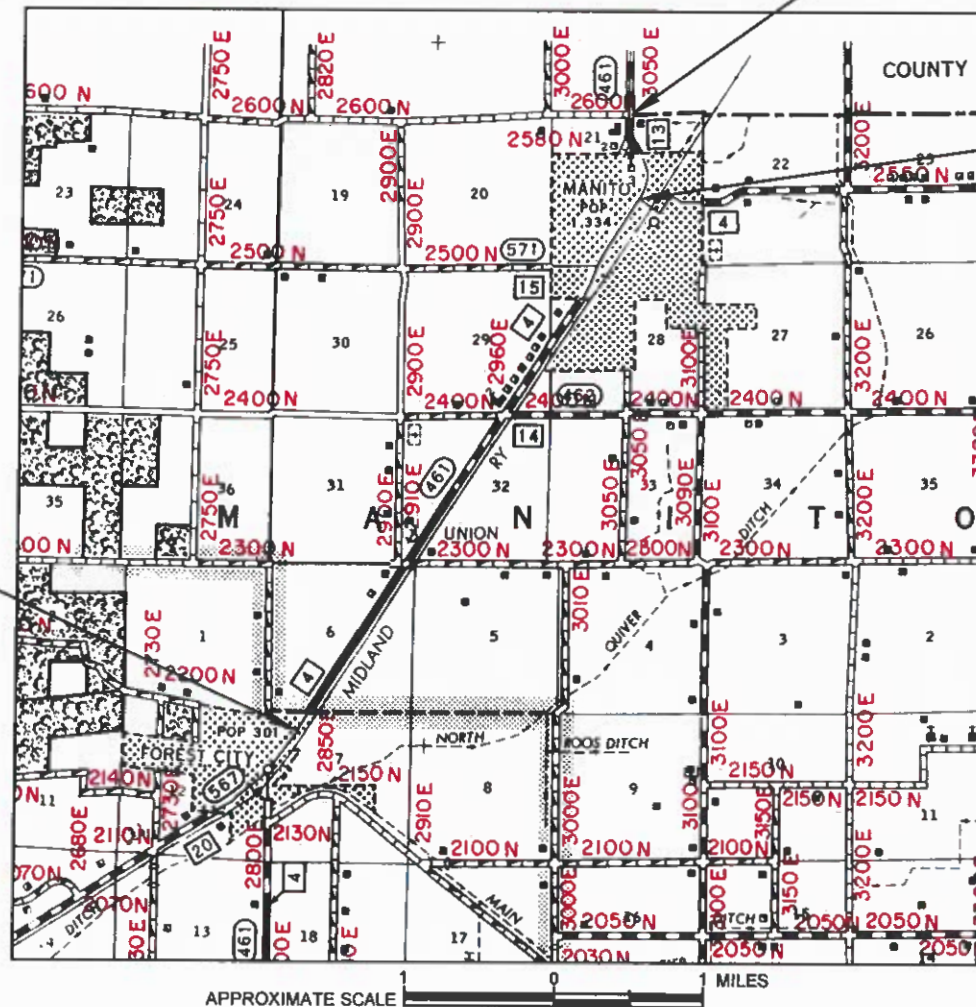
- 000001-09 STANDARD SYMBOLS, ABBREVIATIONS, AND PATTERNS
- 701006-05 OFF-RD OPERATIONS, 2L, 2W, 15' (4.5 m) TO 24" (600 mm) FROM PAVEMENT EDGE
- 701201-05 LANE CLOSURE, 2L 2W, DAY ONLY, FOR SPEEDS ≥ 45 MPH
- 701301-04 LANE CLOSURE, 2L, 2W, SHORT TERM OPERATIONS
- 701306-04 LANE CLOSURE 2L, 2W SLOW MOVING OPERATIONS DAY ONLY FOR SPEEDS > 45 MPH
- 701311-03 LANE CLOSURE 2L, 2W MOVING OPERATIONS - DAY ONLY
- 701501-06 LANE CLOSURE, 2L, 2W, UNDIVIDED
- 701901-11 TRAFFIC CONTROL DEVICES
- 780001-05 TYPICAL PAVEMENT MARKINGS

DATE **3-25-2026**



J.U.L.I.E.
JOINT UTILITY LOCATION INFORMATION FOR EXCAVATION
1-800-892-0123 OR 811

END PROJECT
STA 494+00.00



BEGIN PROJECT
STA 161+93.00

STA EQUATION
STA 194+07.60 (BK) =
STA 256+38.80 (AH)



DESCRIPTION OF WORK

THIS PROJECT CONSISTS OF A BITUMINOUS CAPE SEAL RESURFACING TO IMPROVE COUNTY HIGHWAY 4 AND COUNTY HIGHWAY 13. ALSO INCLUDED WILL BE A PAVEMENT MARKING, AND BITUMINOUS SURFACE TREATMENT A-1.

APPROVED MARCH 25TH 20 26
Nicholas D. Peplow
MASON COUNTY ENGINEER

PASSED March 26 20 26
David L. [Signature]
DISTRICT 8 ENGINEER OF LOCAL ROADS AND STREETS

RETURNING FOR BID BASED ON LIMITED REVIEW March 26 20 26
Thomas C. Price, Esq.
DEPUTY DIRECTOR OF HIGHWAYS, REGION FOUR ENGINEER

GROSS LENGTH = 26975.8 FT = 5.109 MILES
FUNCTIONAL CLASSIFICATION: MAJOR COLLECTOR
DESIGN ADT: 2750 (2024)

GENERAL NOTES

1. FOR THE CAPE SEAL, CRUSHED STONE, CA-20 OR CA 16 SHALL BE UTILIZED FOR THE A-1 SURFACE TREATMENT.
2. THE CONTRACTOR SHALL NOTIFY THE AGENCIES AND UTILITIES AT LEAST 10 (TEN) DAYS PRIOR TO ANY CONSTRUCTION IN THE AREA AND SHALL COMPLY WITH ALL RESTRICTIONS FOR EQUIPMENT MOVEMENTS AND CLEARANCES AS REGARDS TO THEIR FACILITIES.
3. BEFORE STARTING ANY EXCAVATION, THE CONTRACTOR MUST CALL J.U.L.I.E. AT 1-800-892-0123 FOR FIELD LOCATIONS OF BURIED ELECTRICAL, TELEPHONE, GAS FACILITIES, AND ALL PUBLIC UTILITIES. A 48 HOUR NOTIFICATION IS REQUIRED. THE CONTRACTOR SHALL BE RESPONSIBLE FOR ANY UTILITY COORDINATION THAT COULD INTERFERE WITH THE CONSTRUCTION OPERATIONS.
4. THE CONTRACTOR SHALL INDEMNIFY THE COUNTY, ITS OFFICERS, AND EMPLOYEES AGAINST ALL CLAIMS DUE TO DAMAGE TO CORPORATE OR PRIVATE PROPERTY RESULTING FROM HIS CONSTRUCTION OPERATIONS AS DESCRIBED IN ARTICLE 107.20 AND 107.26 OF THE STANDARD SPECIFICATIONS FOR ROAD AND BRIDGE CONSTRUCTION.
5. WHENEVER IT IS NECESSARY TO REMOVE BITUMINOUS AGGREGATE MIXTURE, OIL AND CHIP SURFACE, EXISTING GRAVEL OR CRUSHED STONE BASE COURSE, IT SHALL BE REMOVED AT THE EXPENSE OF THE CONTRACTOR. NO ADDITIONAL COMPENSATION WILL BE ALLOWED FOR ADDITIONAL LABOR OR EQUIPMENT REQUIRED.
6. WHEN DURING CONSTRUCTION OPERATIONS ANY LOOSE MATERIAL IS DEPOSITED IN THE FLOW LINE OF DITCHES, GUTTER OR DRAINAGE STRUCTURES SO THAT THE NATURAL FLOW OF WATER IS OBSTRUCTED, IT SHALL BE REMOVED AT THE CLOSE OF EACH WORKING DAY. AT THE CONCLUSION OF THE CONSTRUCTION OPERATIONS, ALL DRAINAGE STRUCTURES SHALL BE FREE FROM ALL DIRT AND DEBRIS. THIS WORK WILL NOT BE PAID FOR SEPARATELY BUT SHALL BE INCLUDED IN THE COST OF THE CAPE SEAL/BITUMINOUS SURFACE TREATMENT A-1 (SPECIAL) OPERATION.
7. THE CONTRACTOR SHALL BE REQUIRED TO PROVIDE ACCESS TO ABUTTING PROPERTY AT ALL TIMES DURING THE CONSTRUCTION OF THIS IMPROVEMENT.
8. TRAFFIC CONTROL SIGNS REMOVED MUST BE RESET AT THEIR PERMANENT LOCATIONS IN A WORKMANLIKE MANNER AND VISIBLE TO TRAFFIC ON THE ROADWAY. THESE SIGNS SHALL BE INSTALLED IN ACCORDANCE WITH THE 'MANUAL ON UNIFORM TRAFFIC CONTROL DEVICES FOR STREET AND HIGHWAYS' LATEST EDITION. THE COST OF SUCH WORK SHALL BE INCLUDED IN THE COST OF THE CAPE SEAL.
9. WHERE SECTION OR SUBSECTION STONES OR MARKERS ARE ENCOUNTERED, THE ENGINEER SHALL BE NOTIFIED BEFORE SUCH STONES ARE REMOVED. THE CONTRACTOR SHALL PROTECT AND CAREFULLY PRESERVE ALL PROPERTY MARKERS UNTIL THE OWNER, AN AUTHORIZED SURVEYOR, OR AGENT HAS WITNESSED OR OTHERWISE REFERENCED THEIR LOCATION.
10. ALL PROPOSED PAVEMENT WIDTHS ARE MEASURED EDGE TO EDGE OF PAVEMENT UNLESS OTHERWISE SHOWN ON THE PLANS. INTERSECTION RETURN RADII ARE MEASURED TO THE EDGE OF PAVEMENT.
11. IT IS THE RESPONSIBILITY OF THE CONTRACTOR TO MAKE A RECORD OF THE NO PASSING ZONE PAVEMENT MARKING LIMITS PRIOR TO THE APPLICATION OF THE CAPE SEAL. THE COST OF SUCH WORK SHALL BE INCLUDED IN THE COST OF THE PAVEMENT MARKING.
12. MATERIAL FOR SHORT TERM PAVEMENT MARKING PLACED DURING CONSTRUCTION OF THE A-1 SURFACE TREATMENT SHALL BE PAINT.

| CODE NO. | ITEM | UNIT | TOTAL QUANTITY | CONSTR. CODE | |
|------------|--|-------|----------------|--------------|---------|
| | | | | MASON COUNTY | ROADWAY |
| | | | | 0005 | |
| | | | | RURAL | |
| * 40500061 | CAPE SEAL | SQ YD | 65,987 | | 65,987 |
| 67100100 | MOBILIZATION | L SUM | 1 | | 1 |
| * 70300100 | SHORT TERM PAVEMENT MARKING | FOOT | 2,704 | | 2,704 |
| 70300150 | SHORT TERM PAVEMENT MARKING REMOVAL | SQ FT | 901 | | 901 |
| * 70300221 | TEMPORARY PAVEMENT MARKING - PAINT LINE 4" | FOOT | 2704 | | 2704 |
| # 78001120 | PAINT PAVEMENT MARKING - LINE 5" | FOOT | 90,937 | | 90,937 |
| * X1500004 | BITUMINOUS SURFACE TREATMENT A-1 | SQ YD | 23,978 | | 23,978 |
| * X7010216 | TRAFFIC CONTROL AND PROTECTION (SPECIAL) | L SUM | 1 | | 1 |
| | | | | | |
| | | | | | |
| | | | | | |

* SEE SPECIAL PROVISIONS
SPECIALTY ITEM

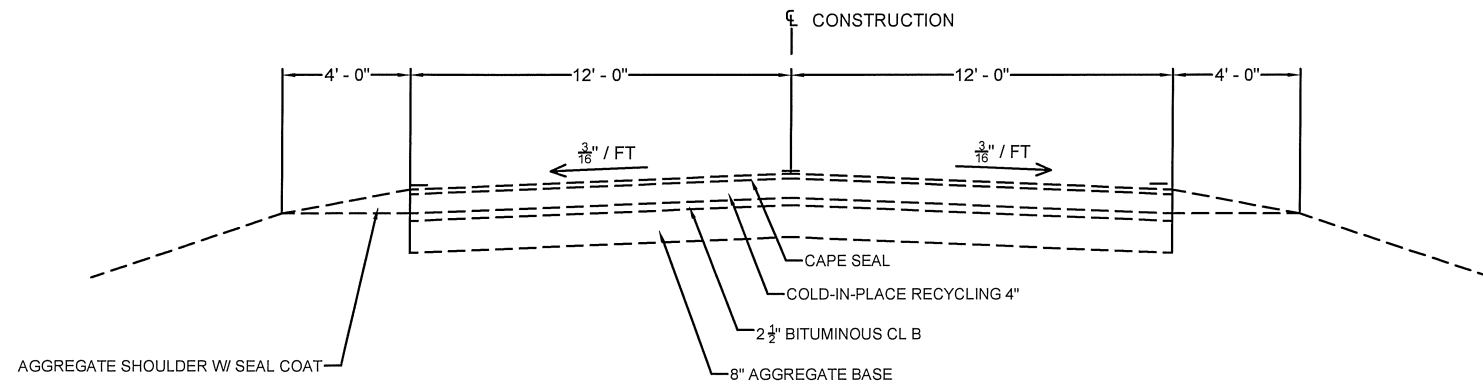
APPLICATION RATES

A-1 SURFACE TREATMENT AGGREGATE: 18-26 lb/sy (2.05 Ton/CY)
A-1 SURFACE TREATMENT BITUMINOUS MATERIALS: .30-.50 GAL/SY (8.40 LBS/GAL)
MICROSURFACING: 24 LB/SY

| | | | | | | | | | | |
|--|----------------|-----------|---|--|---------------------|--------------|----------------|--------------------|--------------|-----------|
| | DESIGNED - NDP | REVISED - | MASON COUNTY CH 4 & CH 13 PAVEMENT PRESERVATION | GENERAL NOTES, LEGEND, PAVEMENT DESIGN INFORMATION, SUMMARY OF QUANTITIES | | FAS RTE. NO. | SECTION | COUNTY | TOTAL SHEETS | SHEET NO. |
| | DRAWN - NDP | REVISED - | | | | 461 | 25-00048-00-PP | MASON | 6 | 2 |
| | CHECKED - | REVISED - | | | | | | | | |
| | DATE - | REVISED - | | | | | | | | |
| | | | | SCALE: NONE | SHEET 1 OF 1 SHEETS | STA. | TO STA. | CONTRACT NO. 93860 | | |

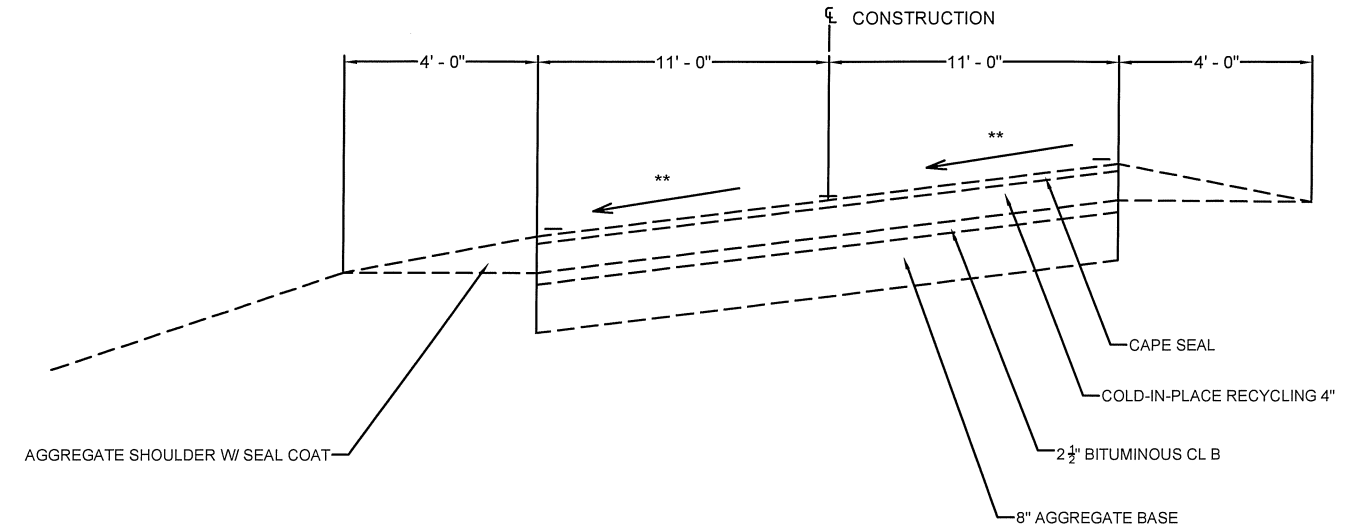
** SEE SHEET NO. 5 FOR SUPERELEVATION RATES

* STA EQUATION:
 STA 194+07.60 (BK) =
 STA 256+38.80 (AH)



EXISTING TYPICAL CROSS SECTION

STA 161+93.00 TO STA 163+50.00

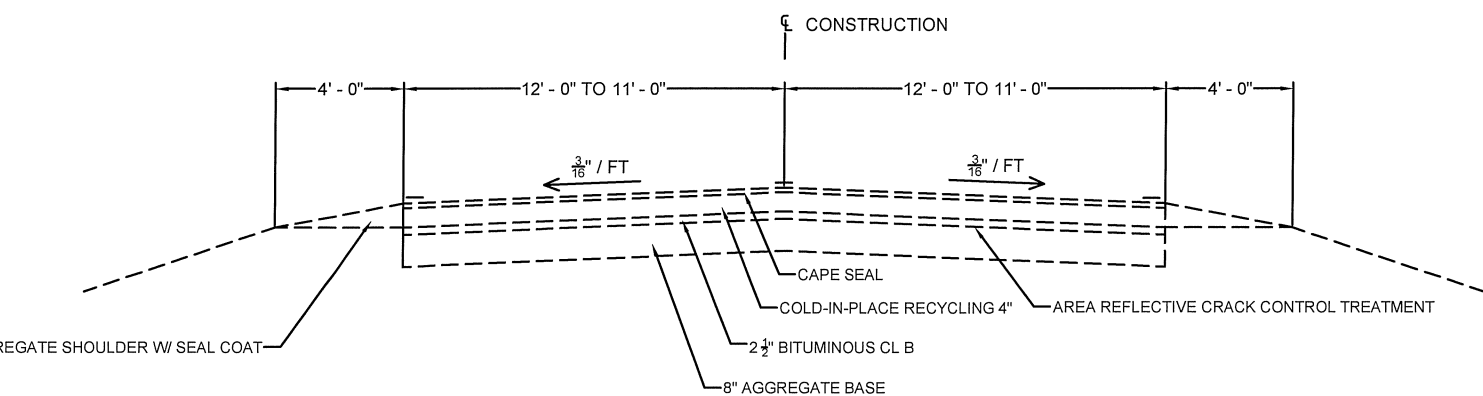


EXISTING TYPICAL CROSS SECTION

STA 164+52.90 TO STA 179+73.50

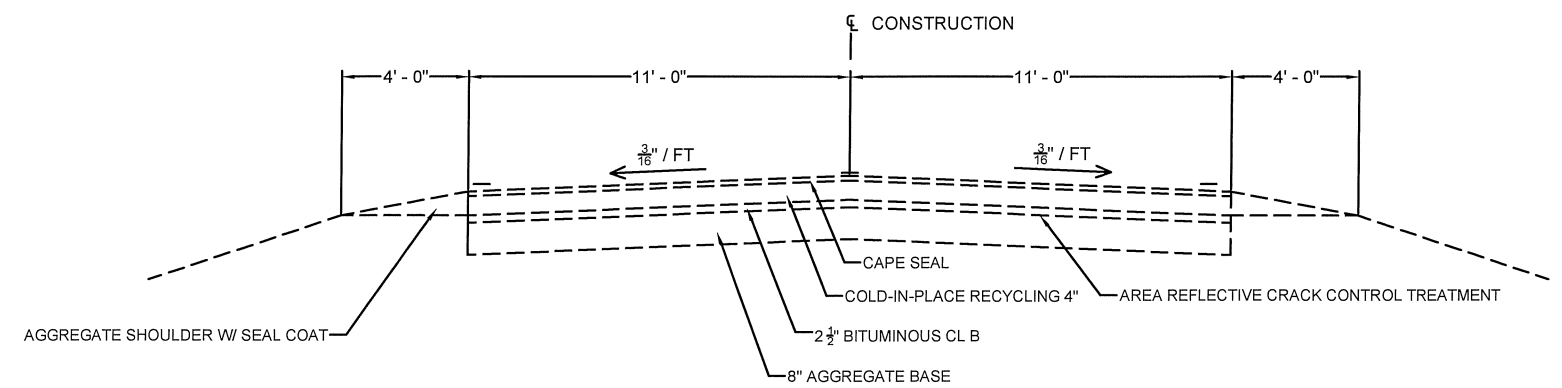
* STA 180+12.40 TO STA 257+05.80

*** NO AREA REFLECTIVE CRACK CONTROL TREATMENT FROM STA 257+05.80 TO STA 271+50.00



EXISTING TYPICAL CROSS SECTION

STA 163+50.00 TO STA 164+52.90



EXISTING TYPICAL CROSS SECTION

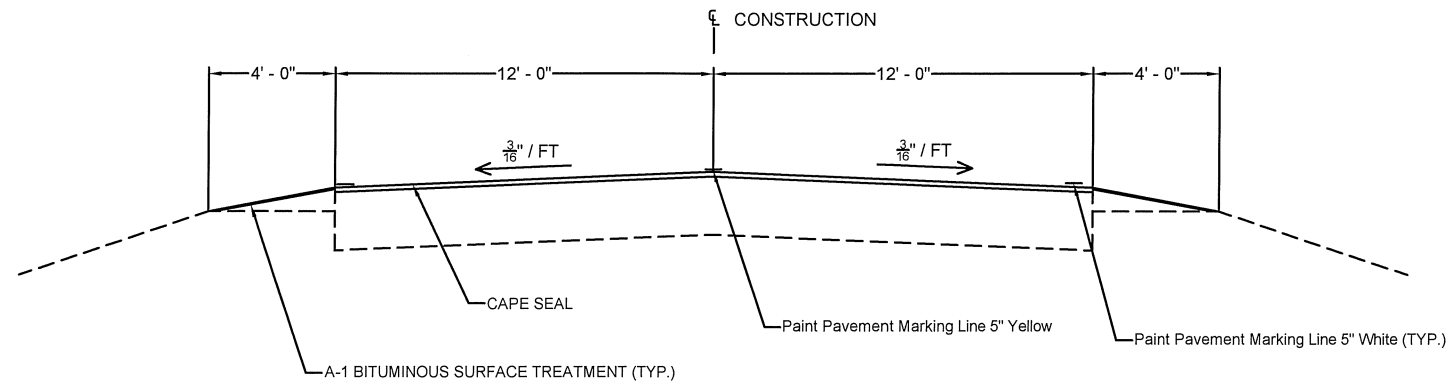
STA 179+73.50 TO STA 180+12.40

*** STA 257+05.80 TO STA 494+00.00

| | | | | | | | | | |
|----------------|-----------|---|------------------------|---------|--------------------|----------------|--------|--------------|-----------|
| DESIGNED - NDP | REVISED - | MASON COUNTY CH 4 & CH 13 PAVEMENT PRESERVATION | TYPICAL CROSS SECTIONS | | FAS RTE. NO. | SECTION | COUNTY | TOTAL SHEETS | SHEET NO. |
| DRAWN - NDP | REVISED - | | | | 461 | 25-00048-00-PP | MASON | 6 | 3 |
| CHECKED - | REVISED - | | SCALE: NONE | | CONTRACT NO. 93860 | | | | |
| DATE - | REVISED - | | SHEET 1 OF 2 SHEETS | | | | | | |
| | | | STA. | TO STA. | | | | | |

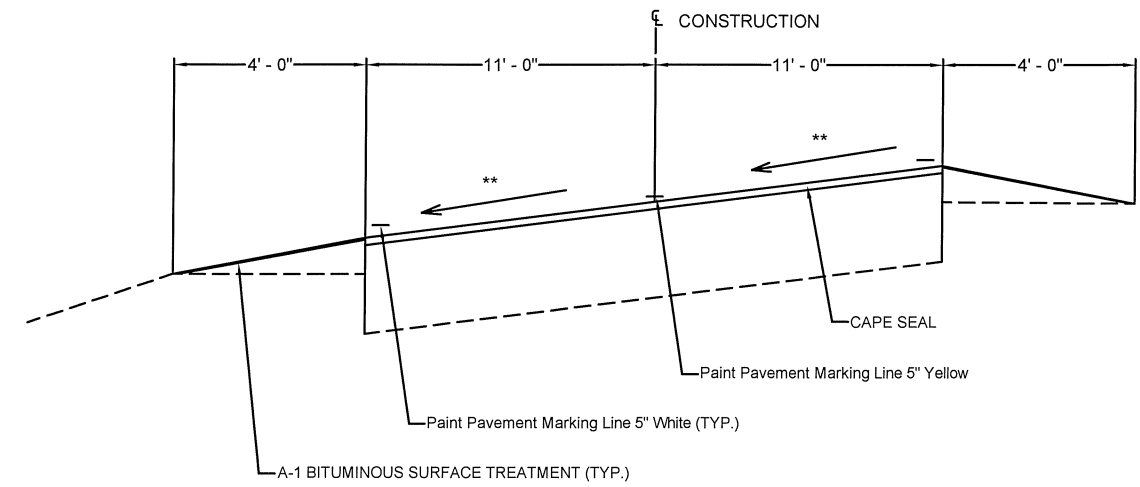
** SEE SHEET NO. 5 FOR SUPERELEVATION RATES

* STA EQUATION:
 STA 194+07.60 (BK) =
 STA 256+38.80 (AH)



PROPOSED TYPICAL CROSS SECTION

STA 161+93.00 TO STA 163+50.00

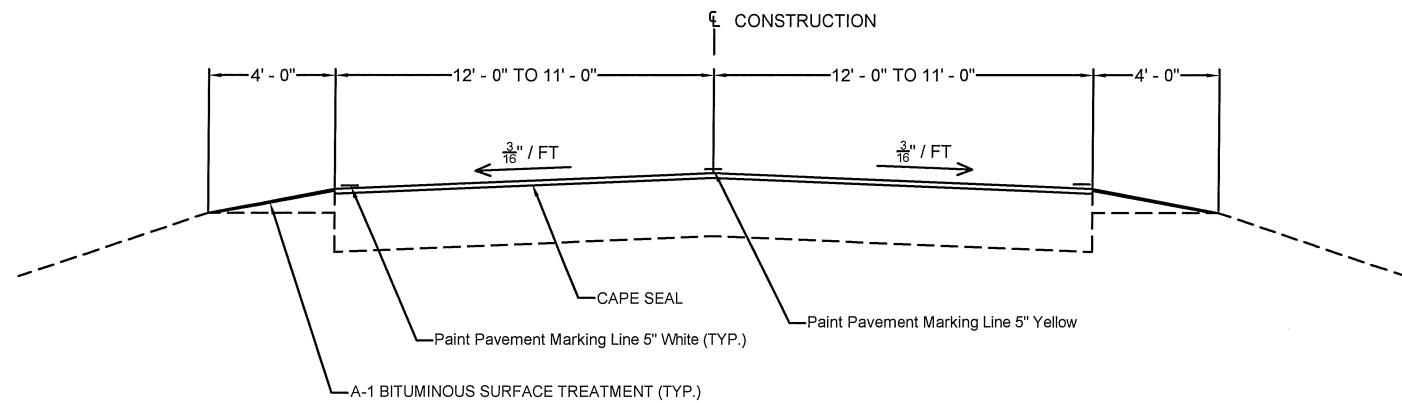


PROPOSED TYPICAL CROSS SECTION

STA 164+52.90 TO STA 179+73.50

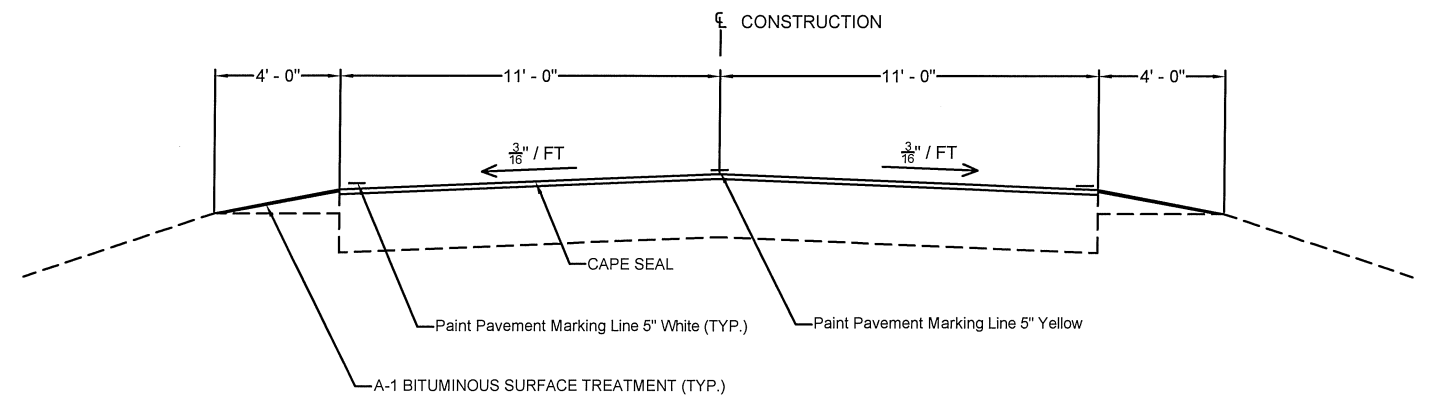
* STA 180+12.40 TO STA 257+05.80

*** NO AREA REFLECTIVE CRACK CONTROL TREATMENT FROM STA 257+05.80 TO STA 271+50.00



PROPOSED TYPICAL CROSS SECTION

STA 163+50.00 TO STA 164+52.90



PROPOSED TYPICAL CROSS SECTION

STA 179+73.50 TO STA 180+12.40

***STA 257+05.80 TO STA 494+00.00

| | |
|----------------|-----------|
| DESIGNED - NDP | REVISED - |
| DRAWN - NDP | REVISED - |
| CHECKED - | REVISED - |
| DATE - | REVISED - |

MASON COUNTY
 CH 4 & CH 13
 PAVEMENT PRESERVATION

TYPICAL CROSS SECTIONS

| | | | | |
|--------------|----------------|--------|--------------|-----------|
| FAS RTE. NO. | SECTION | COUNTY | TOTAL SHEETS | SHEET NO. |
| 461 | 25-00048-00-PP | MASON | 6 | 4 |

SCALE: NONE SHEET 2 OF 2 SHEETS STA. TO STA.

CONTRACT NO. 93860

HORIZONTAL CURVE DATA

P.C. STA. 165+52.9
 P.T. STA. 178+73.5
 R = 2148.79'
 D = 2° 40'
 SE = 6.0%
 ATTAIN S.E. STA. 164+52.9 TO STA. 166+02.9
 REMOVE S.E. STA. 178+23.5 TO STA. 179+73.5

P.C. STA. 180+79.4
 P.T. STA. 194+07.6 (BK) = STA. 256+38.8 (AH)
 R = 10102.22'
 D = 5° 12'
 SE = 3.9%
 ATTAIN S.E. STA. 180+12.4 TO STA. 181+12.4
 REMOVE S.E. STA. 193+74.6 TO STA. 257+05.8

P.C. STA. 280+44.6
 P.T. STA. 291+44.6
 R = 6611.12'
 D = 0° 51'
 SE = NORMAL CROWN

P.C. STA. 295+75.2
 P.T. STA. 307+48.1
 R = 7162.03'
 D = 0° 48'
 SE = NORMAL CROWN

P.C. STA. 395+98.4
 P.T. STA. 404+00.9
 R = 8594.42'
 D = 0° 40'
 SE = NORMAL CROWN

P.C. STA. 406+64.3
 P.T. STA. 414+66.8
 R = 8594.42'
 D = 0° 40'
 SE = NORMAL CROWN

| | | | | | | | | | | | |
|--|----------------|-----------|---|-----------------------|-------------|---------------------|--------------|----------------|--------------------|--------------|-----------|
| | DESIGNED - NDP | REVISED - | MASON COUNTY CH 4 & CH 13 PAVEMENT PRESERVATION | HORIZONTAL CURVE DATA | | | FAS RTE. NO. | SECTION | COUNTY | TOTAL SHEETS | SHEET NO. |
| | DRAWN - NDP | REVISED - | | | | | 461 | 25-00048-00-PP | MASON | 6 | 5 |
| | CHECKED - | REVISED - | | | | | | | | | |
| | DATE - | REVISED - | | | SCALE: NONE | SHEET 1 OF 1 SHEETS | STA. | TO STA. | CONTRACT NO. 93860 | | |

CAPE SEAL

| LOCATION | WIDTH | SQ YD |
|--------------------------------|------------|------------------|
| STA 161+93.00 TO STA 163+50.00 | 24' | 418.67 |
| STA 163+50.00 TO STA 164+52.90 | 24' TO 22' | 262.97 |
| STA 164+52.90 TO STA 194+07.60 | 22' | 7,222.60 |
| STA 256+38.80 TO STA 494+00.00 | 22' | 58,082.93 |
| TOTAL | | 65,987.17 |

SHORT TERM PAVEMENT MARKING

| LOCATION | FOOT |
|--------------------------------|--------------|
| STA 161+93.00 TO STA 194+07.60 | 324 |
| STA 256+38.80 TO STA 494+00.00 | 2,380 |
| TOTAL | 2,704 |

SHORT TERM PAVEMENT MARKING REMOVAL

| LOCATION | SQ FT |
|--------------------------------|------------|
| STA 161+93.00 TO STA 194+07.60 | 108 |
| STA 256+38.80 TO STA 494+00.00 | 793 |
| TOTAL | 901 |

BITUMINOUS SURFACE TREATMENT A-1

| LOCATION | WIDTH | SQ YD |
|-----------------------------------|-------|---------------|
| LT STA 161+93.00 TO STA 194+07.60 | 4' | 1,429 |
| LT STA 256+38.80 TO STA 494+00.00 | 4' | 10,561 |
| RT STA 161+93.00 TO STA 194+07.60 | 4' | 1,429 |
| RT STA 256+38.80 TO STA 494+00.00 | 4' | 10,564 |
| TOTAL | | 23,983 |

TEMPORARY PAVEMENT MARKING - PAINT LINE 4"

| LOCATION | FOOT |
|--------------------------------|--------------|
| STA 161+93.00 TO STA 194+07.60 | 324 |
| STA 256+38.80 TO STA 494+00.00 | 2,380 |
| TOTAL | 2,704 |

PAINT PAVEMENT MARKING LINE - 5 INCH

| LOCATION | FOOT |
|--|------------------|
| SOLID WHITE EDGE LINE | |
| LT & RT STA 161+93.00 TO STA 194+07.60 | 6,429.20 |
| LT & RT STA 256+38.80 TO STA 494+00.00 | 47,522.40 |
| DEDUCTION FOR SIDE ROADS | 2,151.00 |
| TOTAL WHITE | 51,800.60 |
| YELLOW SKIP DASH | |
| STA 299+99.00 TO STA 396+10.00 | 2,410.00 |
| YELLOW NO PASSING | |
| LT STA 357+22.00 TO STA 365.05.00 | 783.00 |
| RT STA 365+05.00 TO STA 377+19.00 | 1,214.00 |
| DOUBLE YELLOW NO PASSING | |
| LT & RT STA 161+93.00 TO STA 194+07.60 | 6,429.20 |
| LT & RT STA 256+38.80 TO STA 299+99.00 | 8,720.40 |
| LT & RT STA 396+10.00 TO STA 494+00.00 | 19,580.00 |
| TOTAL YELLOW | 39,136.60 |
| TOTAL | 90,937.20 |