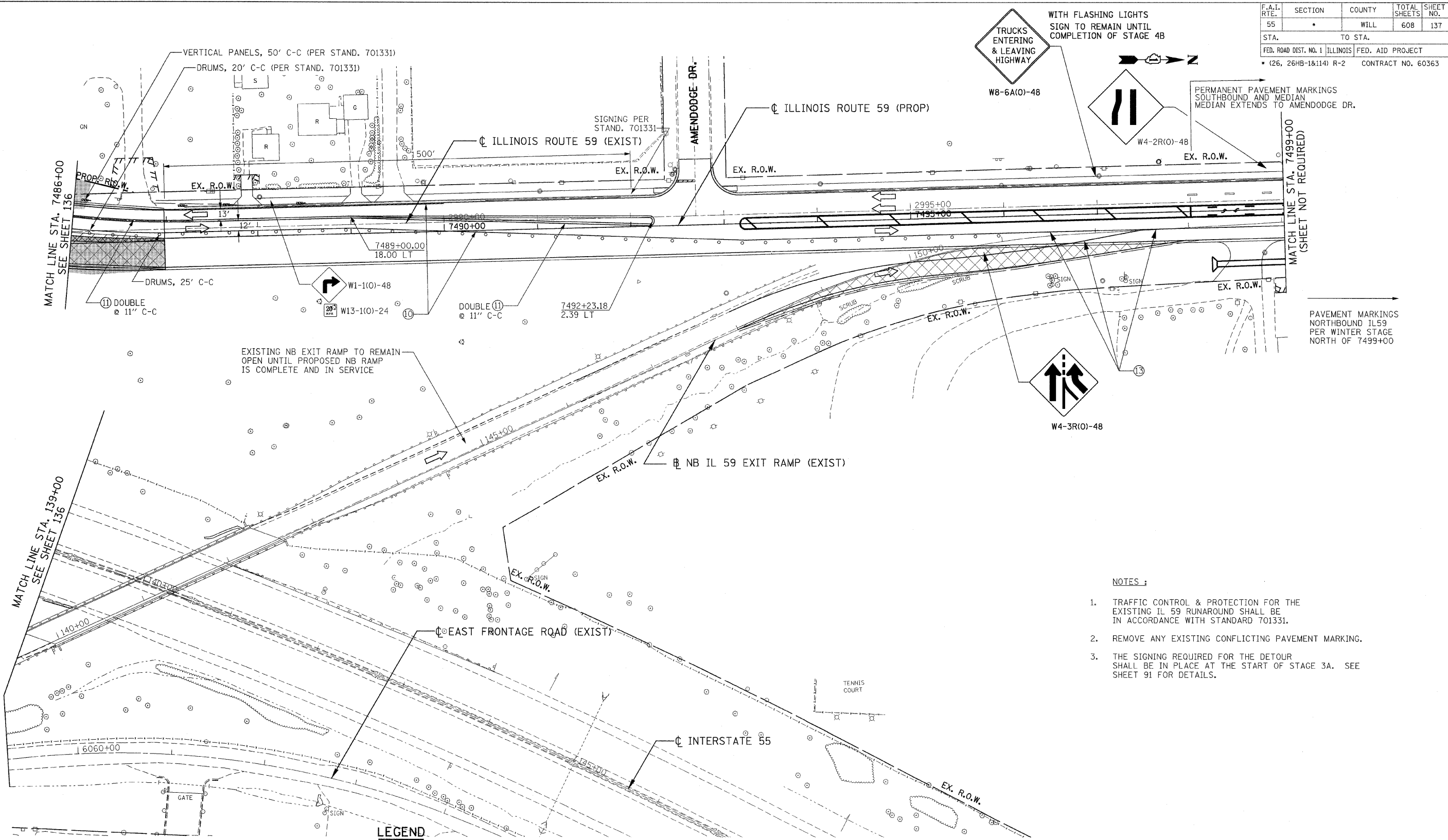


F.A.I. RTE.	SECTION	COUNTY	TOTAL SHEETS	SHEET NO.
55	*	WILL	608	137
STA.	TO STA.			
FED. ROAD DIST. NO. 1	ILLINOIS	FED. AID PROJECT		
* (26, 26HB-1&114) R-2		CONTRACT NO. 60363		



NOTES :

1. TRAFFIC CONTROL & PROTECTION FOR THE EXISTING IL 59 RUNAROUND SHALL BE IN ACCORDANCE WITH STANDARD 701331.
2. REMOVE ANY EXISTING CONFLICTING PAVEMENT MARKING.
3. THE SIGNING REQUIRED FOR THE DETOUR SHALL BE IN PLACE AT THE START OF STAGE 3A. SEE SHEET 91 FOR DETAILS.

LEGEND

	WORK ZONE		ARROW BOARD
	TEMPORARY PAVEMENT		VERTICAL PANELS
	TEMP. PVMT - PREVIOUS STAGE		BARRICADE, TYPE III
	CLASS D PATCHES (TYPE AND THICKNESS SPECIFIED AT EACH PATCH LOCATION)		PROP. TRAFFIC SIGN
	PAVEMENT REMOVAL		BARRICADES, TYPE II
	PAVED SHOULDER REMOVAL (INCL. GORES)		PLASTIC TYPE II BARRICADES OR DRUMS W/ FLASHING LIGHTS
	TRAFFIC FLOW		TEMPORARY CONCRETE BARRIER

LEGEND

① EPOXY PAVEMENT MARKING - LINE 4" (WHITE)	⑤ TEMPORARY PAVEMENT MARKING - 8" (WHITE)	⑨ PAVEMENT MARKING TAPE, TYPE III - LETTERS AND SYMBOLS	⑬ PAVEMENT MARKING TAPE, TYPE III - 8" (WHITE)
② TEMPORARY PAVEMENT MARKING - 4" (WHITE)	⑥ TEMPORARY PAVEMENT MARKING - 12" (WHITE)	⑩ PAVEMENT MARKING TAPE, TYPE III - 4" (WHITE)	⑭ PAVEMENT MARKING TAPE, TYPE III - 12" (WHITE)
③ TEMPORARY PAVEMENT MARKING - 4" (YELLOW)	⑦ EPOXY PAVEMENT MARKING - LINE 5" (WHITE) 10' DASH-30' SKIP	⑪ PAVEMENT MARKING TAPE, TYPE III - 4" (YELLOW)	⑮ PAVEMENT MARKING TAPE, TYPE III - 12" (YELLOW)
④ EPOXY PAVEMENT MARKING - LINE 4" (YELLOW)	⑧ TEMPORARY PAVEMENT MARKING - 24" (WHITE)	⑫ PAVEMENT MARKING TAPE, TYPE III - 4" (YELLOW), 10' DASH-30' SKIP	⑯ PAVEMENT MARKING TAPE, TYPE III - 24" (WHITE)
		⑬ PAVEMENT MARKING TAPE, TYPE III - 6" (WHITE)	⑰ PAVEMENT MARKING TAPE, TYPE III - 5" (WHITE), 10' DASH-30' SKIP

REVISIONS	
NAME	DATE
JB - ENTIRE SHEET REVISED	07/11/08

ILLINOIS DEPARTMENT OF TRANSPORTATION
FAI 55 AT FAP 338 ILLINOIS ROUTE 59
SECTION: (26, 26HB-1&114) R-2
MAINTENANCE OF TRAFFIC
STAGE 3A
STA. 7486+00 TO STA. 7499+00
SCALE: 1" = 50'
DATE: 03/14/08
DRAWN BY: JB
CHECKED BY: ACL
TENG
TENG & ASSOCIATES, INC.
ENGINEERS, ARCHITECTS, PLANNERS
225 N. MICHIGAN AVENUE, CHICAGO, IL 60601
TELEPHONE: (312) 696-3900

\\valtoorh6.dcn, \\slurodl3.dcn, \\slurodl3.dcn, \\tfdoo001.dcn, \\tfdoo002.dcn, \\tfdoo003.dcn, \\tfdoo004.dcn, \\tfdoo005.dcn, \\tfdoo006.dcn, \\tfdoo007.dcn, \\tfdoo008.dcn, \\tfdoo009.dcn, \\tfdoo010.dcn, \\tfdoo011.dcn, \\tfdoo012.dcn, \\tfdoo013.dcn, \\tfdoo014.dcn, \\tfdoo015.dcn, \\tfdoo016.dcn, \\tfdoo017.dcn, \\tfdoo018.dcn, \\tfdoo019.dcn, \\tfdoo020.dcn, \\tfdoo021.dcn, \\tfdoo022.dcn, \\tfdoo023.dcn, \\tfdoo024.dcn, \\tfdoo025.dcn, \\tfdoo026.dcn, \\tfdoo027.dcn, \\tfdoo028.dcn, \\tfdoo029.dcn, \\tfdoo030.dcn, \\tfdoo031.dcn, \\tfdoo032.dcn, \\tfdoo033.dcn, \\tfdoo034.dcn, \\tfdoo035.dcn, \\tfdoo036.dcn, \\tfdoo037.dcn, \\tfdoo038.dcn, \\tfdoo039.dcn, \\tfdoo040.dcn, \\tfdoo041.dcn, \\tfdoo042.dcn, \\tfdoo043.dcn, \\tfdoo044.dcn, \\tfdoo045.dcn, \\tfdoo046.dcn, \\tfdoo047.dcn, \\tfdoo048.dcn, \\tfdoo049.dcn, \\tfdoo050.dcn, \\tfdoo051.dcn, \\tfdoo052.dcn, \\tfdoo053.dcn, \\tfdoo054.dcn, \\tfdoo055.dcn, \\tfdoo056.dcn, \\tfdoo057.dcn, \\tfdoo058.dcn, \\tfdoo059.dcn, \\tfdoo060.dcn, \\tfdoo061.dcn, \\tfdoo062.dcn