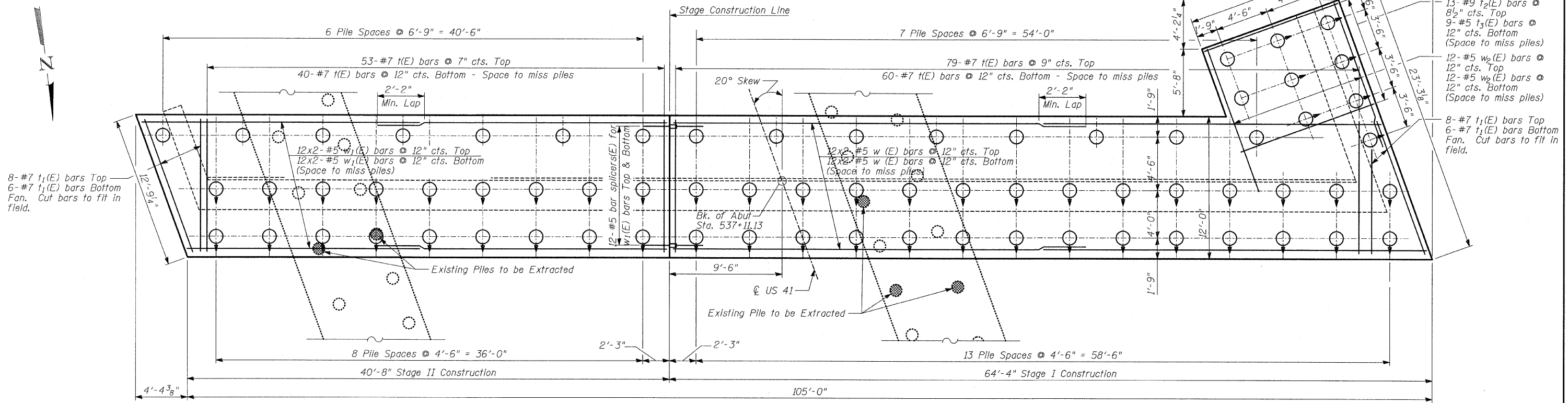


ROUTE NO.	SECTION	COUNTY	TOTAL SHEETS	SHEET	SHEET NO. - S-42 S-66 SHEETS
346	*	LAKE	469	211	
FED. ROAD DIST. NO.		ILLINOIS	FED. AID PROJECT		CONTRACT # 60826
* 125X-HB-(1&2) R-1					

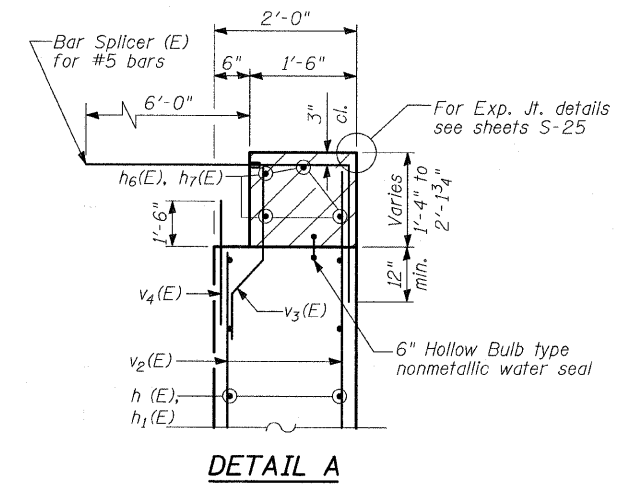
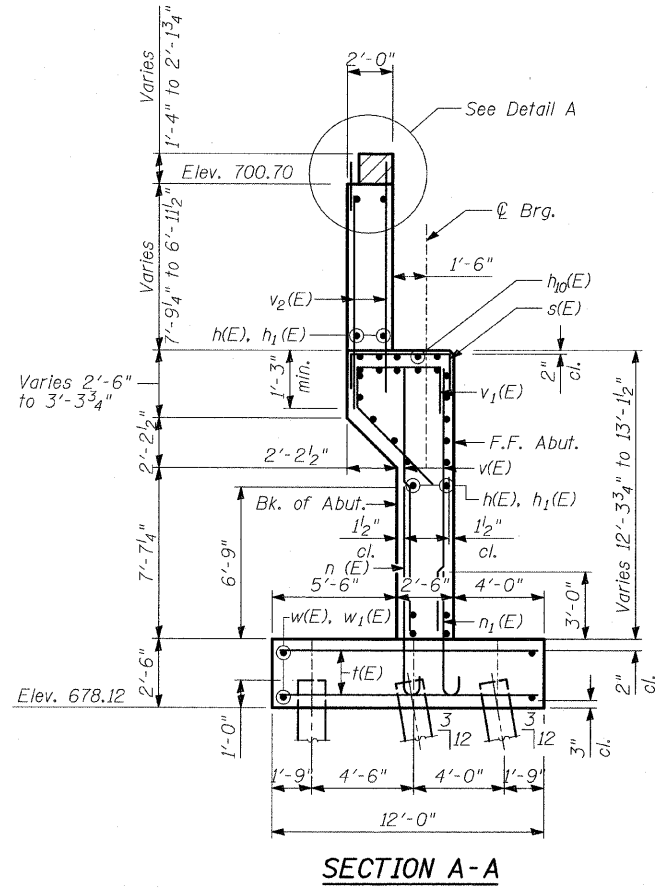
STATE OF ILLINOIS
DEPARTMENT OF TRANSPORTATION

PILE DATA:

Type: 14" ϕ Metal Shell Piles w/0.25" Thick Walls
 Nominal Req'd Bearing: 390 kips
 Allowable Resist. Avail.: 130 kips
 Est. Length: 41'
 No. Required: 69 Piles and 1 Test Pile



FOOTING PLAN - SOUTH ABUTMENT



DETAIL A

NOTES

1. Reinforcement bars designated (E) shall be epoxy coated.
2. For details of Bar Splicers, see sheet S-28 of S-66.
3. Hatched area to be poured after superstructure false work has been removed. Quantity of concrete included with Concrete Superstructure.
4. Space reinforcement in cap to miss anchor bolts.
5. Pour steps monolithically with cap.

**SOUTH ABUTMENT
DETAILS II**

FAP 346 (U.S. ROUTE 41 - SKOKIE
HIGHWAY) OVER ILLINOIS ROUTE 132
SECTION 125X-HB-(1&2)R-1
LAKE COUNTY
S.N. 049-0209

TYLIN INTERNATIONAL

DESIGNED	- SP
CHECKED	- AD
DRAWN	- SP, MAF
CHECKED	- AD

Rev. 1-17-08