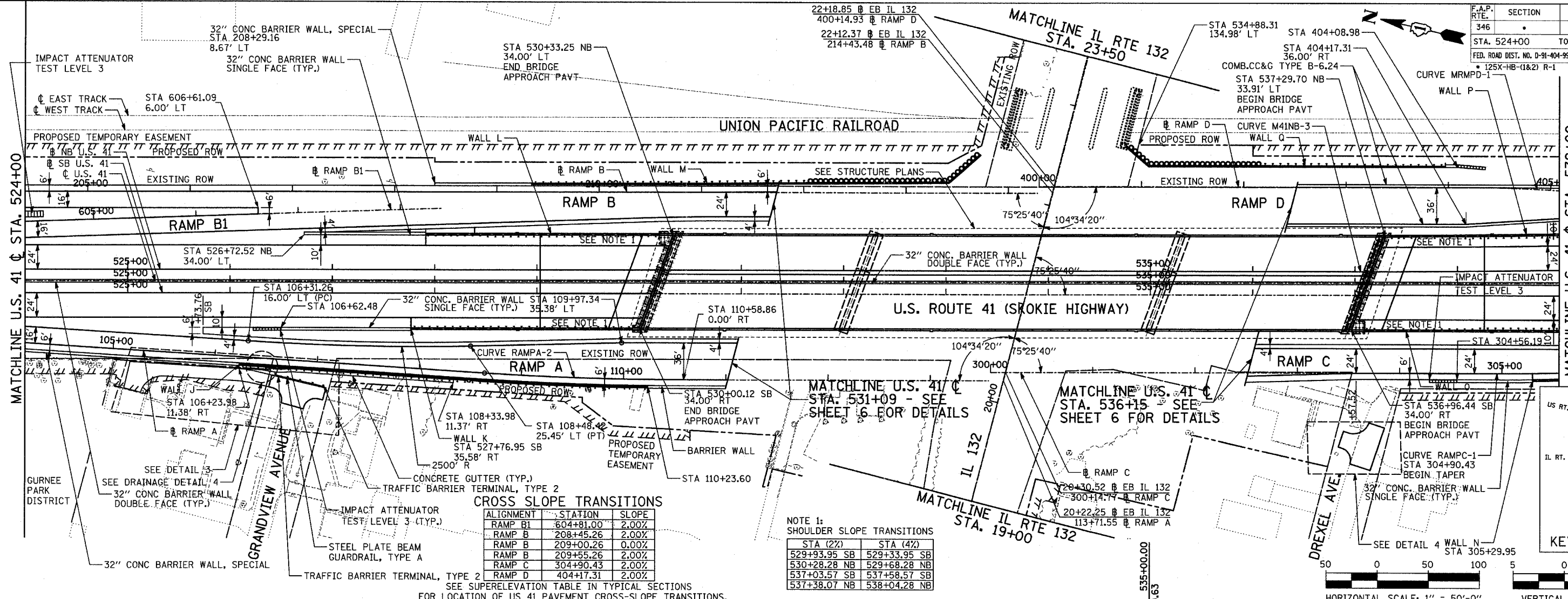


F.A.P. RTE.	SECTION	COUNTY	TOTAL SHEETS	SHEET NO.
346		LAKE	469	49
STA. 524+00		TO STA. 539+00		
FED. ROAD DIST. NO. D-91-404-99		ILLINOIS	FED. AID PROJ. NO.	CONTRACT NO.
		125X-HB-(1&2) R-1		601



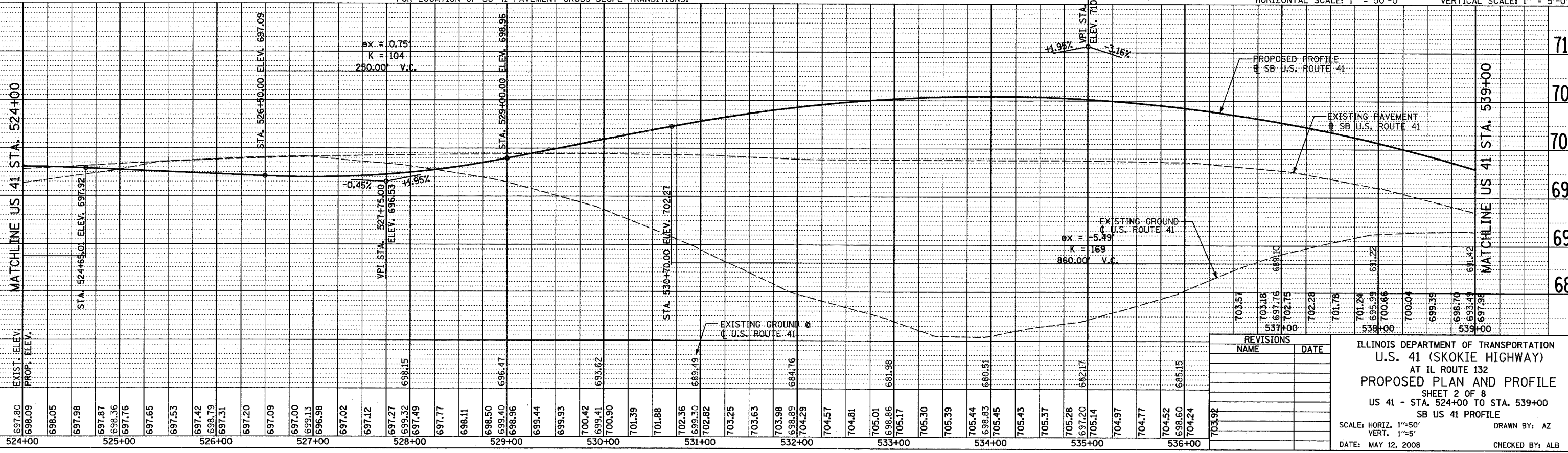
CROSS SLOPE TRANSITIONS

ALIGNMENT	STATION	SLOPE
RAMP B1	604+81.00	2.00%
RAMP B	208+45.26	2.00%
RAMP B	209+00.26	0.00%
RAMP B	209+55.26	2.00%
RAMP C	304+90.43	2.00%
RAMP D	404+17.31	2.00%

NOTE 1: SHOULDER SLOPE TRANSITIONS

STA (2%)	STA (4%)
529+93.95 SB	529+33.95 SB
530+28.28 NB	529+68.28 NB
537+03.57 SB	537+58.57 SB
537+38.07 NB	538+04.28 NB

SEE SUPERELEVATION TABLE IN TYPICAL SECTIONS FOR LOCATION OF US 41 PAVEMENT CROSS-SLOPE TRANSITIONS.



REVISIONS

NO.	NAME	DATE

ILLINOIS DEPARTMENT OF TRANSPORTATION
U.S. 41 (SKOKIE HIGHWAY)
 AT IL ROUTE 132
PROPOSED PLAN AND PROFILE
 SHEET 2 OF 8
 US 41 - STA. 524+00 TO STA. 539+00
 SB US 41 PROFILE

SCALE: HORIZ. 1"=50'
 VERT. 1"=5'

DATE: MAY 12, 2008

DRAWN BY: AZ
 CHECKED BY: ALB

DATE: _____ BY: _____

PLAN

REVISIONS

NO.	DATE	DESCRIPTION

DATE: _____ BY: _____

PROFILE

REVISIONS

NO.	DATE	DESCRIPTION