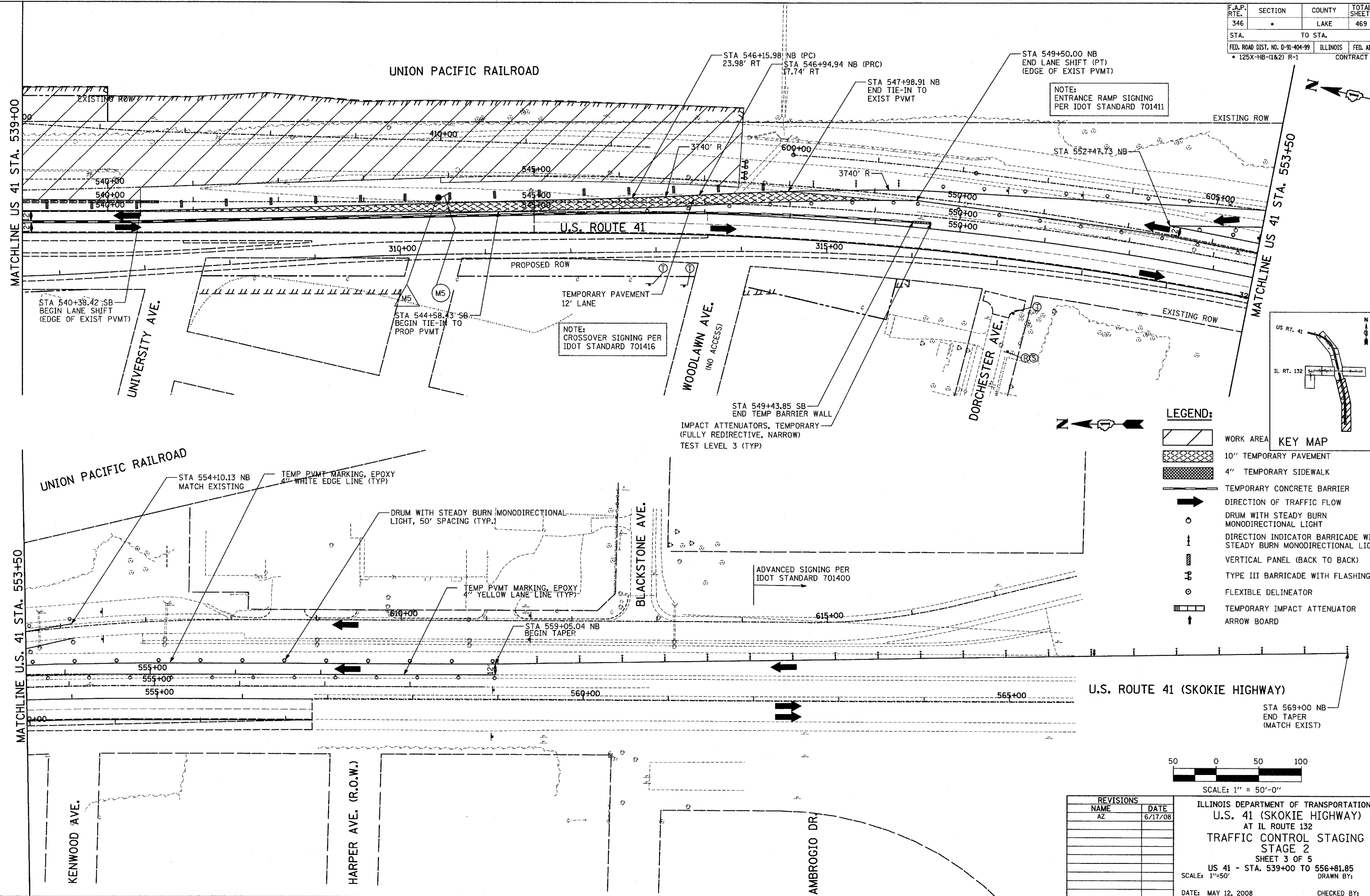


F.A.P. RTE.	SECTION	COUNTY	TOTAL SHEETS	SHEET NO.
346		LAKE	469	88
STA.	TO STA.		FED. ROAD DIST. NO. D-91-404-99	ILLINOIS
			FED. AID PROJ. NO. 125X-HB-(1&2) R-1	CONTRACT # 608

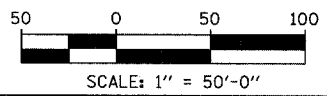
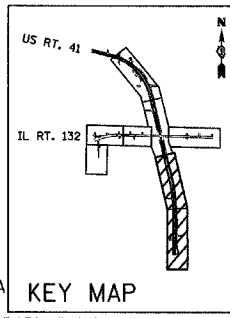
PLAN	SURVEYED	DATE
	ALIGNED	
	CHECKED	
	RT. OF WAY	
	CHECKED	
	NO. FILE NAME	

PROFILE	SURVEYED	DATE
	GRADES	
	CHECKED	
	B.M. NOTED	
	STRUCTURE NOTATIONS	
	CHFD	



**LEGEND:**

- WORK AREA
- 10" TEMPORARY PAVEMENT
- 4" TEMPORARY SIDEWALK
- TEMPORARY CONCRETE BARRIER
- DIRECTION OF TRAFFIC FLOW
- DRUM WITH STEADY BURN MONODIRECTIONAL LIGHT
- DIRECTION INDICATOR BARRICADE WITH STEADY BURN MONODIRECTIONAL LIGHT
- VERTICAL PANEL (BACK TO BACK)
- TYPE III BARRICADE WITH FLASHING LIGHT
- FLEXIBLE DELINEATOR
- TEMPORARY IMPACT ATTENUATOR
- ARROW BOARD



REVISIONS	
NAME	DATE
AZ	6/17/08

ILLINOIS DEPARTMENT OF TRANSPORTATION  
**U.S. 41 (SKOKIE HIGHWAY)**  
 AT IL ROUTE 132  
**TRAFFIC CONTROL STAGING**  
**STAGE 2**  
 SHEET 3 OF 5  
 US 41 - STA. 539+00 TO 556+81.85  
 SCALE: 1"=50'  
 DATE: MAY 12, 2008  
 DRAWN BY:  
 CHECKED BY: