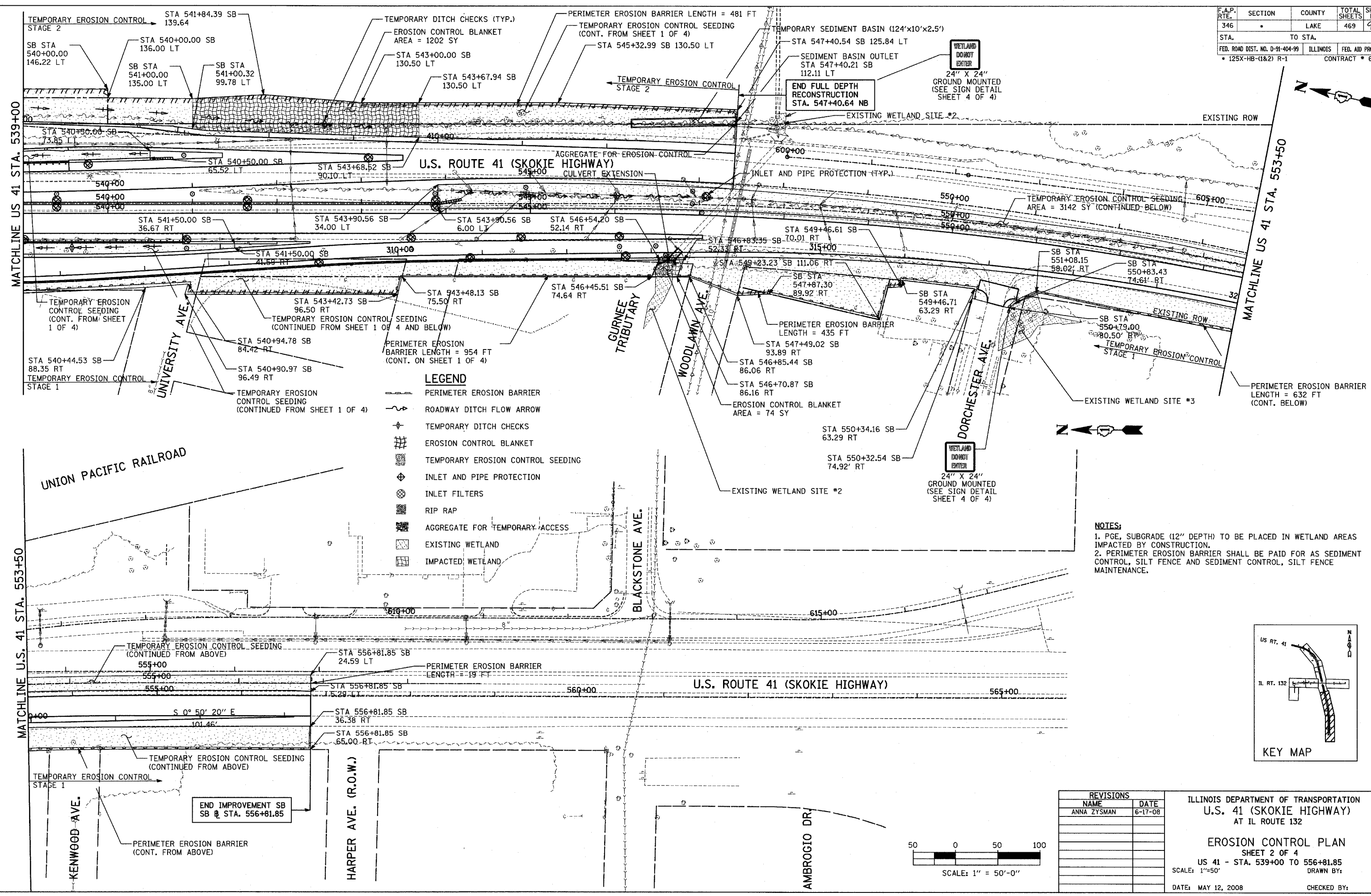


F.A.P. RTE.	SECTION	COUNTY	TOTAL SHEETS	SHEET NO.
346		LAKE	469	92
STA. 547+00.00 TO STA. 547+40.64		FED. ROAD DIST. NO. D-91-404-99 ILLINOIS FED. AID PROJ. NO. 125X-HB-(1&2) R-1 CONTRACT # 608		

PLAN	SURVEYED	DATE
	BY	
	PLOTTED	
	CHECKED	
	RT. OF WAY CHECKED	
	NO. OF WAY CHECKED	
	CADD FILE NAME	

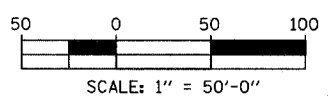
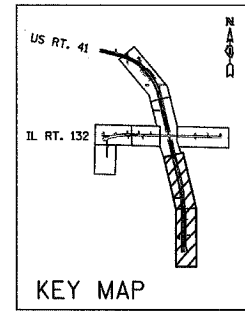
PROFILE	SURVEYED	DATE
	BY	
	PLOTTED	
	CHECKED	
	BAR NOTED	
	STRUCTURE NOTATIONS CHKD	



- LEGEND**
- PERIMETER EROSION BARRIER
 - ROADWAY DITCH FLOW ARROW
 - TEMPORARY DITCH CHECKS
 - EROSION CONTROL BLANKET
 - TEMPORARY EROSION CONTROL SEEDING
 - INLET AND PIPE PROTECTION
 - INLET FILTERS
 - RIP RAP
 - AGGREGATE FOR TEMPORARY ACCESS
 - EXISTING WETLAND
 - IMPACTED WETLAND

NOTES:

- PGE, SUBGRADE (12" DEPTH) TO BE PLACED IN WETLAND AREAS IMPACTED BY CONSTRUCTION.
- PERIMETER EROSION BARRIER SHALL BE PAID FOR AS SEDIMENT CONTROL, SILT FENCE AND SEDIMENT CONTROL, SILT FENCE MAINTENANCE.



REVISIONS	
NAME	DATE
ANNA ZYSMAN	6-17-08

ILLINOIS DEPARTMENT OF TRANSPORTATION
U.S. 41 (SKOKIE HIGHWAY)
 AT IL ROUTE 132

EROSION CONTROL PLAN
 SHEET 2 OF 4
 US 41 - STA. 539+00 TO 556+81.85
 SCALE: 1"=50'
 DATE: MAY 12, 2008
 DRAWN BY:
 CHECKED BY: