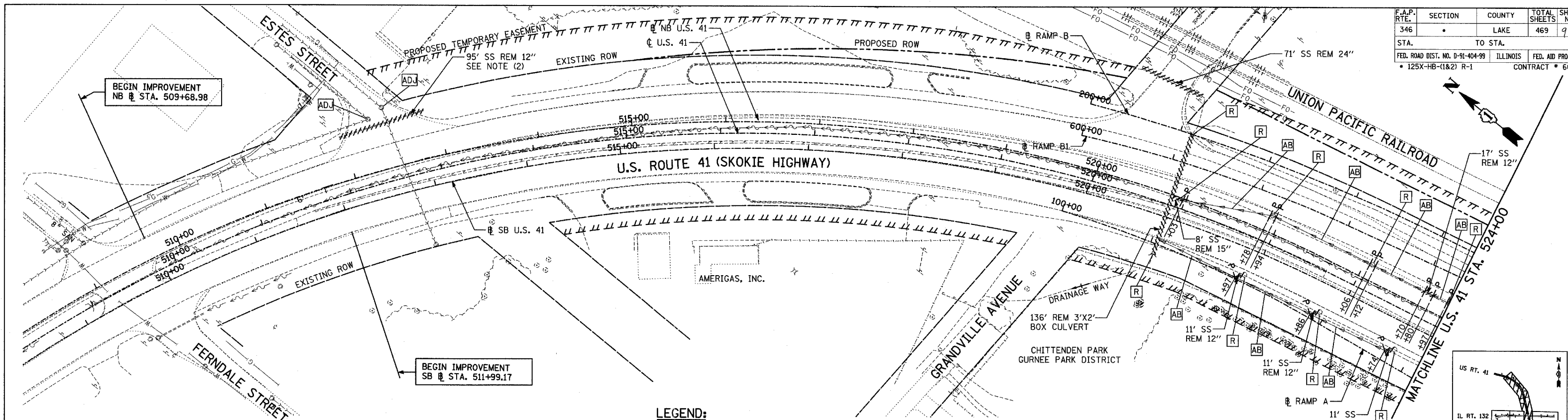


F.A.P. RTE.	SECTION	COUNTY	TOTAL SHEETS	SHEET NO.
346		LAKE	469	95
STA.	TO STA.		ILLINOIS	FED. AID PROJ. NO.
FED. ROAD DIST. NO. D-91-404-99				CONTRACT # 608
• 125X-HB-(1&2) R-1				

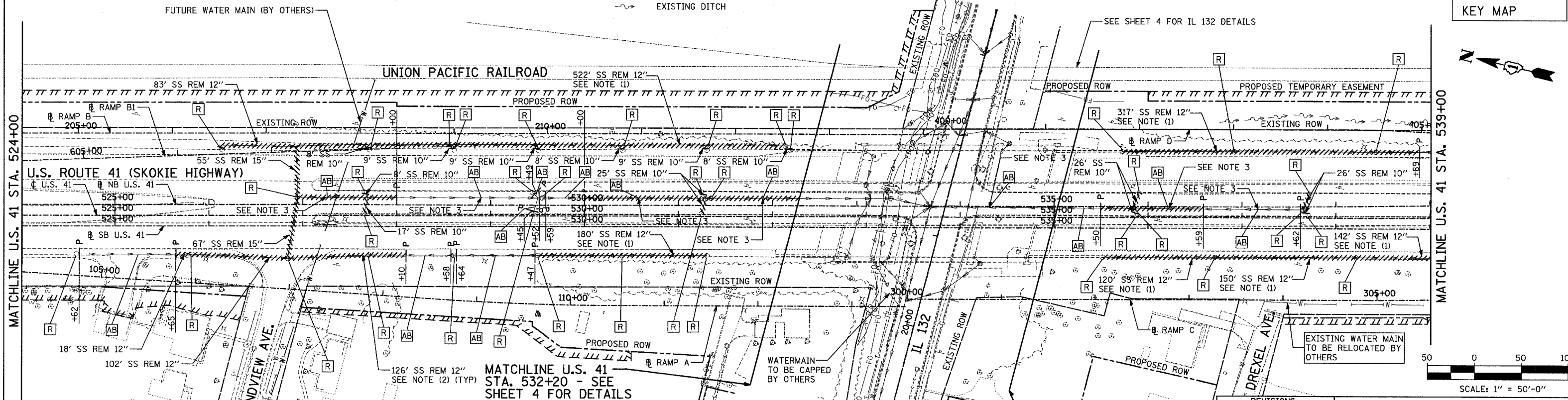
PLAN	SURVEYED	DATE
	PLOTTED	
	CHECKED	
	REVISIONS	
	NO. OF WAY CHECKED	
	CADD FILE NAME	
	NO.	



**LEGEND:**

- EXISTING SANITARY SEWER
- EXISTING STORM SEWER
- ////// UTILITY REMOVAL
- P- UTILITY REMOVAL PLUG
- - - EXISTING DITCH

PROFILE	SURVEYED	DATE
	PLOTTED	
	CHECKED	
	REVISIONS	
	NO. OF WAY CHECKED	
	STRUCTURE NOTATIONS CHK'D	
	NO.	



**NOTES:**

1. CUT OFF PORTIONS OF EXISTING PILING AS NECESSARY TO ACCOMMODATE THE INSTALLATION OF DRAINAGE STRUCTURES AND STORM SEWERS. COST SHALL BE INCLUDED IN THE UNIT BID PRICE OF "REMOVAL OF EXISTING STRUCTURES NO. 1" & "REMOVAL OF EXISTING STRUCTURES NO. 2".
2. ALL TRENCHES FOR REMOVED SEWERS THAT FALL UNDER PROPOSED PAVEMENT SHALL BE BACKFILLED WITH TRENCH BACKFILL. ALL QUANTITIES ARE INCLUDED IN THE PAY ITEM "TRENCH BACKFILL."
3. THE EXISTING SEWER BETWEEN STA 527+00 AND STA 538+00 SHALL BE MAINTAINED DURING ALL STAGES OF CONSTRUCTION TO PROVIDE FOR TEMPORARY DRAINAGE. THIS SEWER WILL BE ABANDONED AND FILLED WITH CONTROLLED LOW STRENGTH MATERIAL (CLSM) UPON COMPLETION OF ALL PROPOSED SEWER WORK.
4. SEE GENERAL NOTES FOR TEMPORARY DRAINAGE.

REVISIONS	
NAME	DATE

ILLINOIS DEPARTMENT OF TRANSPORTATION  
 U.S. 41 (SKOKIE HIGHWAY)  
 AT IL ROUTE 132  
 EXISTING AND REMOVAL  
 DRAINAGE PLAN  
 SHEET 1 OF 4  
 US 41 - 509+68.98 TO STA. 539+00  
 SCALE: 1"=50'  
 DATE: MAY 12, 2008  
 DRAWN BY: NSB  
 CHECKED BY: DA