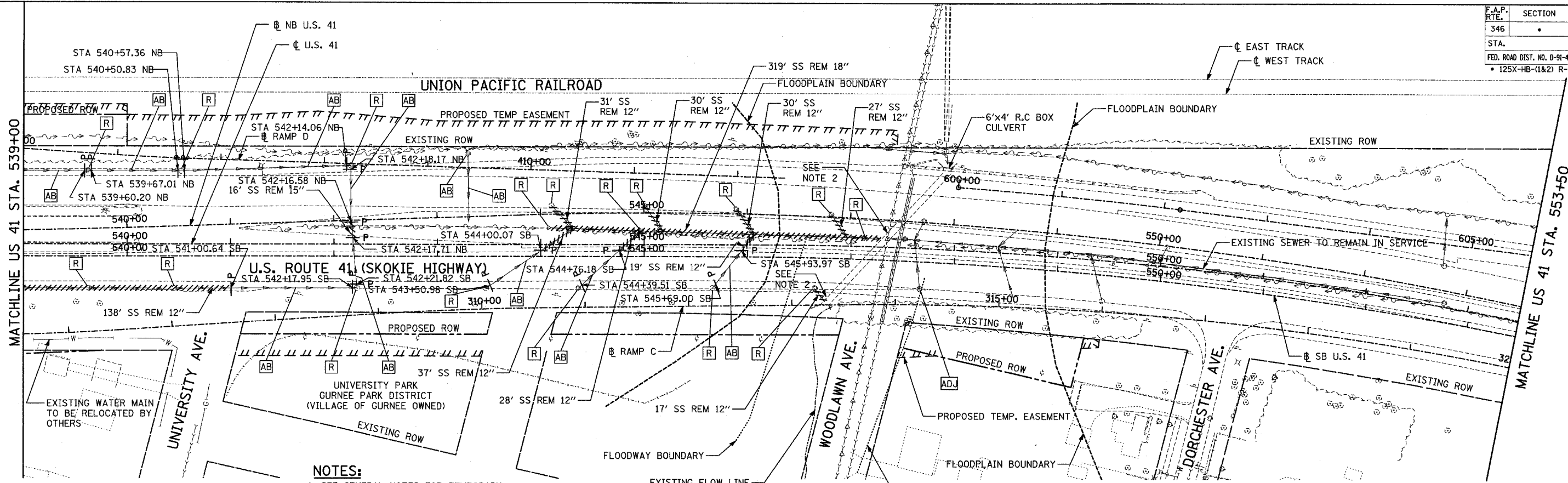


F.A.P. RTE.	SECTION	COUNTY	TOTAL SHEETS	SHEET NO.
346		LAKE	469	96
STA.	TO STA.		FED. AID PROJ. NO.	CONTRACT #
			ILLINOIS	608
FED. ROAD DIST. NO. D-91-404-99		ILLINOIS		FED. AID PROJ. NO.
125X-HB-(1&2) R-1				



- NOTES:**
- SEE GENERAL NOTES FOR TEMPORARY DRAINAGE.
 - EXISTING HOLE IN CULVERT SHALL BE PLUGGED. COST TO BE INCLUDED IN THE ITEM "CONCRETE BOX CULVERTS."
 - ALL TRENCHES FOR REMOVED SEWERS THAT FALL UNDER PROPOSED PAVEMENT SHALL BE BACKFILLED WITH TRENCH BACKFILL. ALL QUANTITIES ARE INCLUDED IN THE PAY ITEM "TRENCH BACKFILL."

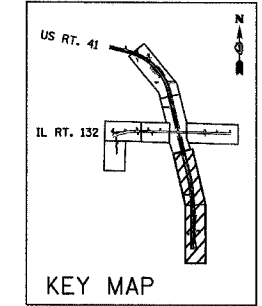
END IMPROVEMENT NB @ STA. 556+85.72

END IMPROVEMENT SB @ STA. 556+81.85

NO DRAINAGE WORK

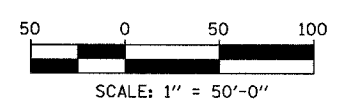
- LEGEND:**
- EXISTING SANITARY SEWER
 - EXISTING STORM SEWER
 - ////// UTILITY REMOVAL
 - P- UTILITY REMOVAL PLUG
 - - - EXISTING DITCH

NOTE:
SEE GENERAL NOTES FOR TEMPORARY DRAINAGE.



PLAN	SURVEYED	DATE
	PLOTTED	
	CHECKED	
	BY	
	NO. OF MAY CHECKED	
	CADD FILE NAME	
	NO.	

PROFILE	SURVEYED	DATE
	PLOTTED	
	CHECKED	
	BY	
	NO. OF MAY CHECKED	
	STRUCTURE NOTATIONS CHKD	
	NO.	



REVISIONS	
NAME	DATE

ILLINOIS DEPARTMENT OF TRANSPORTATION
 U.S. 41 (SKOKIE HIGHWAY)
 AT IL ROUTE 132
 EXISTING AND REMOVAL
 DRAINAGE PLAN
 SHEET 2 OF 4
 US 41 - STA. 539+00 TO 556+81.85
 SCALE: 1"=50'
 DATE: MAY 12, 2008
 DRAWN BY: NSB
 CHECKED BY: DA