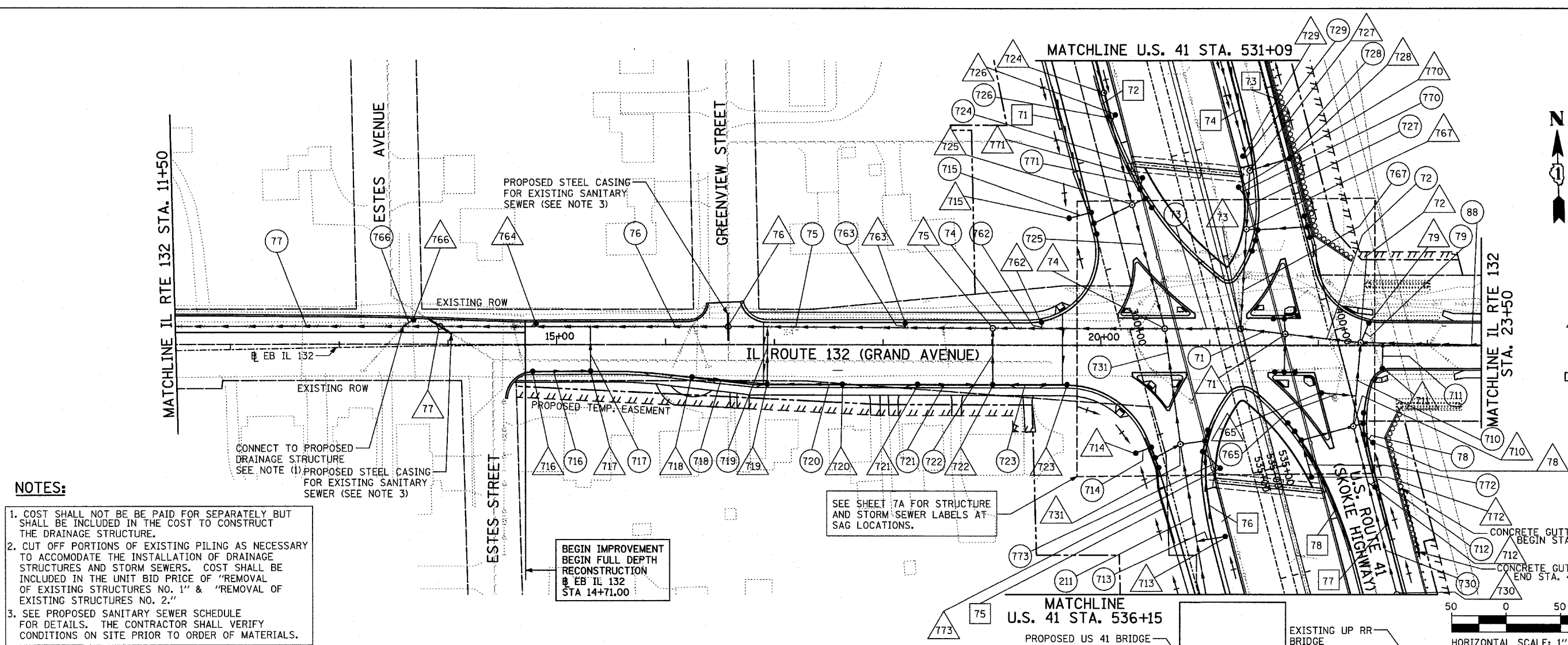


F.A.P. RTE.	SECTION	COUNTY	TOTAL SHEETS	SHEET NO.
346		LAKE	469	105
STA.		TO STA.		
FED. ROAD DIST. NO. D-91-404-99		ILLINOIS	FED. AID PROJ. NO.	
125X-HB-(1&2) R-1		CONTRACT # 606		

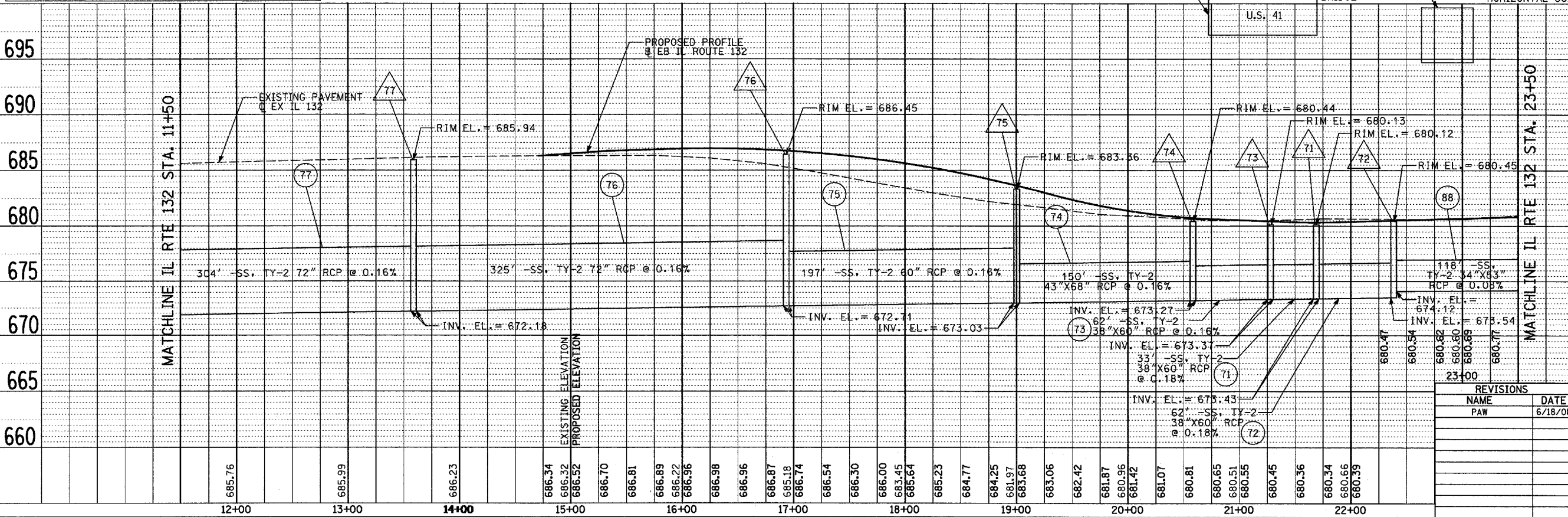
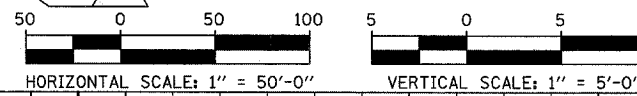
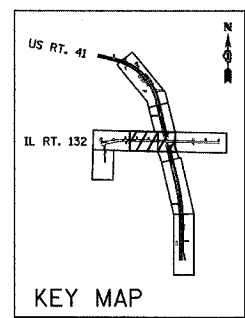
DATE	BY
DATE	BY
DATE	BY

DATE	BY
DATE	BY
DATE	BY

- NOTES:**
- COST SHALL NOT BE PAID FOR SEPARATELY BUT SHALL BE INCLUDED IN THE COST TO CONSTRUCT THE DRAINAGE STRUCTURE.
 - CUT OFF PORTIONS OF EXISTING PILING AS NECESSARY TO ACCOMMODATE THE INSTALLATION OF DRAINAGE STRUCTURES AND STORM SEWERS. COST SHALL BE INCLUDED IN THE UNIT BID PRICE OF "REMOVAL OF EXISTING STRUCTURES NO. 1" & "REMOVAL OF EXISTING STRUCTURES NO. 2."
 - SEE PROPOSED SANITARY SEWER SCHEDULE FOR DETAILS. THE CONTRACTOR SHALL VERIFY CONDITIONS ON SITE PRIOR TO ORDER OF MATERIALS.



- LEGEND:**
- (XY) PROPOSED STORM SEWER NUMBER (X=SHEET NO., Y=PIPE NO.)
 - (XY) PROPOSED STRUCTURE NUMBER (X=SHEET NO., Y=STRUCTURE NO.)
 - (XY) PROPOSED PIPE UNDERDRAINS 6" (X=SHEET NO., Y=PIPE NO.)
 - SHEET FLOW



REVISIONS	
NAME	DATE
PAW	6/18/08

ILLINOIS DEPARTMENT OF TRANSPORTATION
 U.S. 41 (SKOKIE HIGHWAY)
 AT IL ROUTE 132
 DRAINAGE PLAN AND PROFILE
 SHEET 7 OF 8
 IL 132 - STA. 11+50 TO STA. 23+50
 SCALE: HORIZ. 1"=50'
 VERT. 1"=5'
 DATE: MAY 12, 2008
 DRAWN BY: NSB
 CHECKED BY: DA