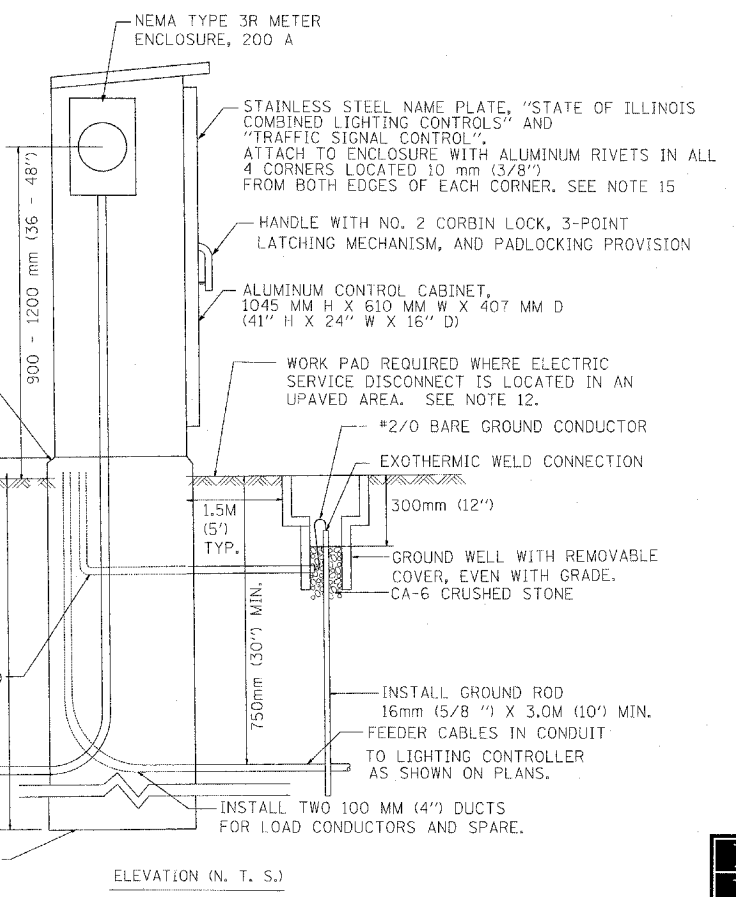
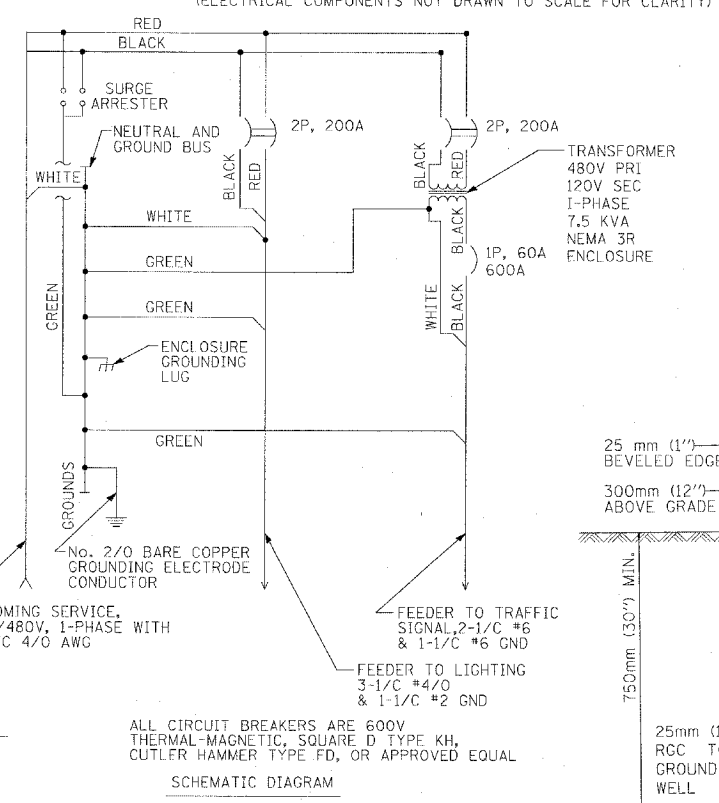
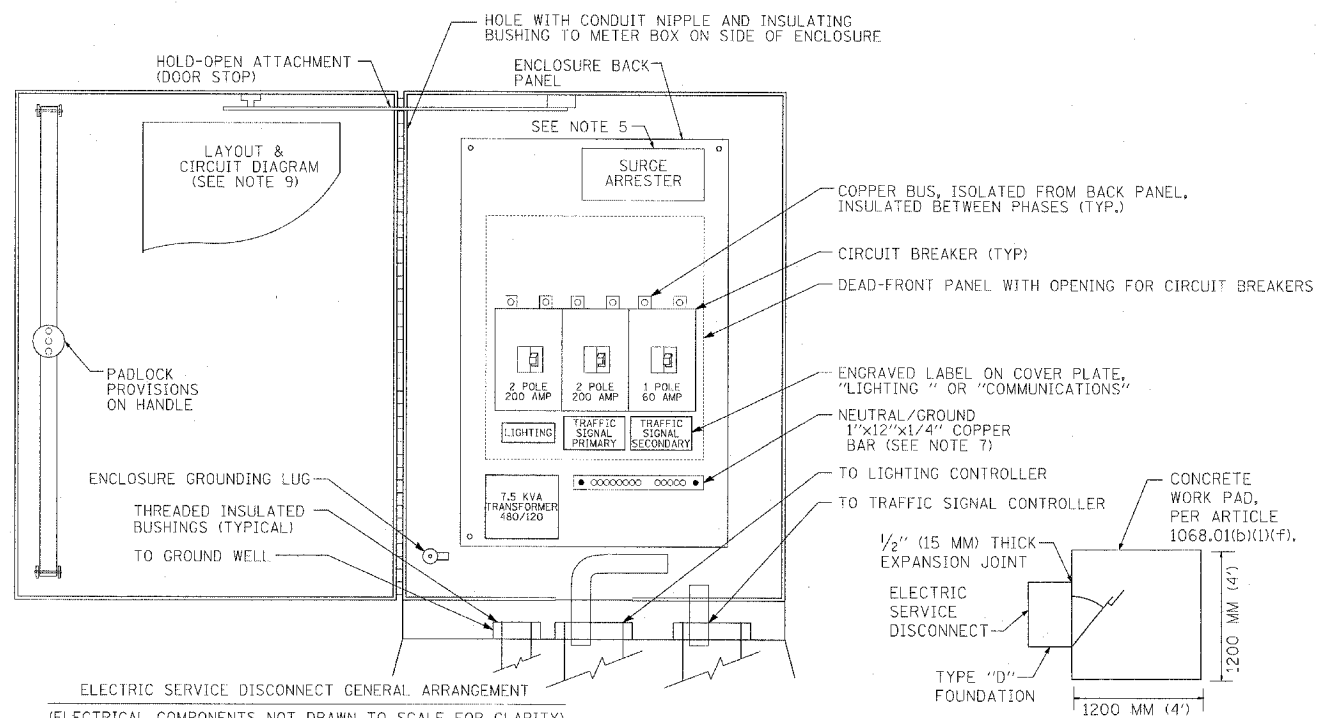
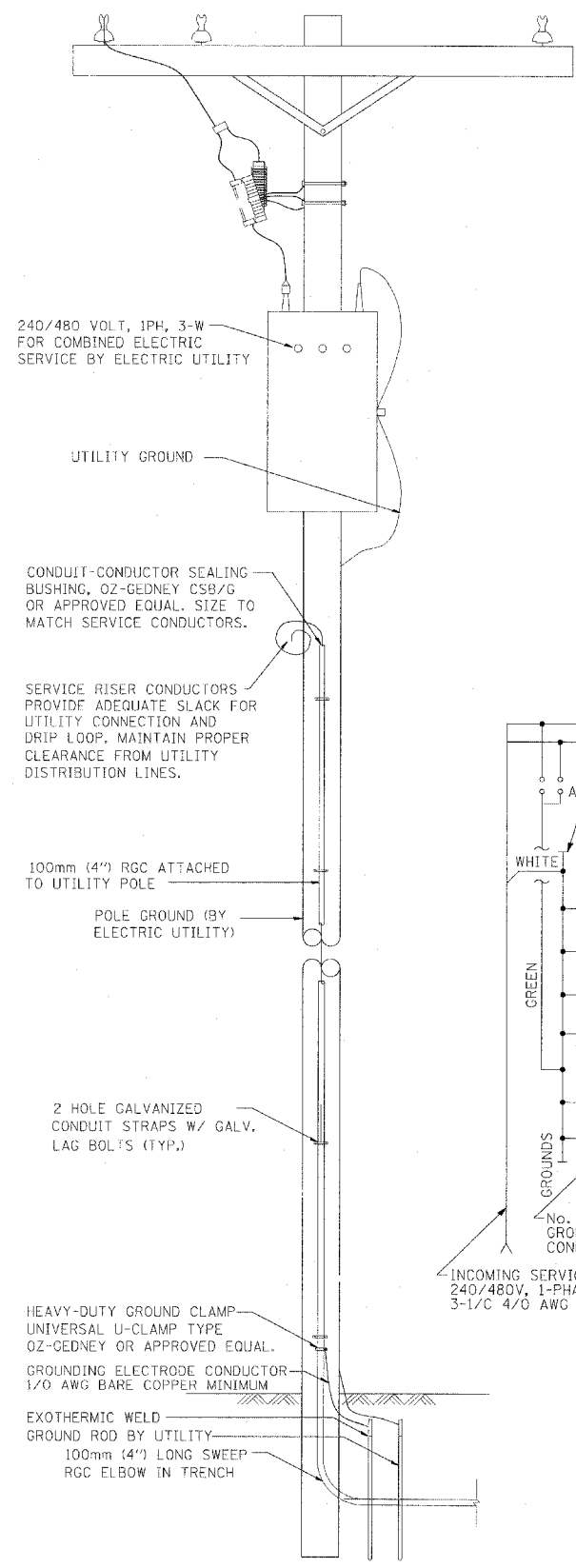


F.A.P. RTE.	SECTION	COUNTY	TOTAL SHEETS	SHEET NO.
120		LAKE	469	152
STA.	TO STA.		ILLINOIS	FED. AID PROJECT
FED. ROAD DIST. NO. D-91-404-98		ILLINOIS		
125X-HB-(1&2) R-1				

NOTES:

- ELECTRIC SERVICE SHALL BE SINGLE PHASE THREE WIRE 240/480 VOLT. SERVICE CABLE AND CONDUIT SHALL BE COMPATIBLE WITH THE SERVICE.
- THE ELECTRIC SERVICE EQUIPMENT ASSEMBLY SHALL BE UL LISTED AS AS SERVICE ENTRANCE EQUIPMENT AND ACCEPTABLE TO COM ED.
- THE ELECTRIC SERVICE DISCONNECT ENCLOSURE SHALL BE AN ALUMINUM CONTROL CABINET, APPROXIMATELY 41" H X 24" W X 16" D, WITH A PIANO-HINGED DOOR, INSULATING BACK PANEL, LEVER HANDLE WITH 3-POINT LATCHING MECHANISM, PADLOCK PROVISION, AND DOOR STOP.
- CIRCUIT BREAKERS SHALL BE THERMAL MAGNETIC BOLT-ON TYPE WITH A MINIMUM INTERRUPTING CAPACITY OF 25,000 SYMMETRICAL AMPERES AT 600 VOLTS. THEY SHALL BE LOCKABLE IN THE "OFF" POSITION FOR OSHA LOCK-OUT/ TAG-OUT. HANDLES SHALL BE TRIP FREE.
- THE SURGE PROTECTOR SHALL BE SUITABLE FOR SINGLE PHASE 60 HZ ELECTRICAL SERVICE OF THE INDICATED VOLTAGE, WITH A SURGE ENERGY CAPABILITY OF 2160 JOULES OR BETTER AT 8/20 MICRO-SECOND PULSE, RATED -40 TO 60 DEGREES C., AND SHALL BE UL LISTED PER UL 1449, GENERAL ELECTRIC "TRANQUELL" MODEL 9L15ECB001 (240/480 V).
- BUS BARS, CONNECTORS, AND LUGS SHALL BE COPPER, INSULATED AND ISOLATED, AND CONFIGURED TO PREVENT SHORTS FROM TIGHTENING TERMINATIONS, ETC. THE OVERALL BUS SECTION SHALL BE LOCATED BEHIND A REMOVABLE DEAD-FRONT PANEL.
- THE COMBINATION GROUND AND NEUTRAL BAR SHALL HAVE SEPARATE GROUND AND NEUTRAL SECTIONS AND SPARE TERMINALS AS INDICATED. THE HEADS OF GROUND SCREWS SHALL BE PAINTED GREEN. THE HEADS OF NEUTRAL SCREWS SHALL BE PAINTED WHITE. THE SERVICE NEUTRAL AND SERVICE GROUNDING ELECTRODE CONDUCTOR SHALL BE TERMINATED ADJACENT TO EACH OTHER AT THE DIVIDE BETWEEN THE SECTIONS AND WIRING SHALL BE TERMINATED ONLY UPON THE APPROPRIATE SECTION.
- THE WIRING TERMINAL ARRANGEMENT, INCLUDING THE GROUND-NEUTRAL BAR, SHALL PROVIDE ADEQUATE ROOM FOR PERFORMING FIELD TERMINATIONS.
- A WATERPROOF HOT-RUN LAMINATED LAYOUT AND CIRCUIT DIAGRAM SHALL BE AFFIXED WITH STAINLESS STEEL NUTS TO WELD STUDS ON THE INSIDE OF THE ENCLOSURE DOOR.
- THE CIRCUIT BREAKERS SHALL HAVE A 2-COLOR ENGRAVED PLASTIC NAMEPLATE, ATTACHED WITH SCREWS AND ENGRAVED AS SHOWN.
- LUGS AND CONNECTORS SHALL BE RATED FOR 75°C CONDUCTORS.
- A WORK PAD SHALL BE CONSTRUCTED WHERE THE DOOR SIDE OF THE ELECTRIC SERVICE DISCONNECT DOES NOT FACE AND ABUT PAVEMENT THE SLAB SHALL BE CONSTRUCTED IN ACCORDANCE WITH SECTION 1068.01(b)(1)(f) OF THE STANDARD SPECIFICATIONS.
- THE ELECTRIC SERVICE DISCONNECT SHALL BE LOCATED WITHIN THE IDOT RIGHT-OF-WAY, AND OUTSIDE THE CLEAR ZONE. THE DOOR OF THE ELECTRIC SERVICE DISCONNECT SHALL BE ORIENTED SO THAT A PERSON FACING THE ELECTRIC SERVICE DISCONNECT IS LOOKING TOWARD ONCOMING TRAFFIC (PREFERRED) OR ACROSS THE MAJOR STREET.
- THE ELECTRIC SERVICE DISCONNECT FOUNDATION SHALL BE CONSTRUCTED IN COMPLIANCE WITH SECTION 878 OF THE STANDARD SPECIFICATIONS AND HIGHWAY STANDARD DRAWING 878001-03, AS MODIFIED ON THIS SHEET. THE GROUND ROD SHALL BE INSTALLED IN AN ACCESS WELL, AND SHALL NOT BE EMBEDDED IN THE FOUNDATION OR THE CONCRETE WORK PAD.
- THE CABINET NAME PLATES SHALL BE STAINLESS STEEL, 1,588 mm (1/16") THICK, 75 mm (3") HIGH, AND OF A LEGNTH SUFFICIENT TO CONTAIN THE LEGEND, IN TWO ROWS OF ENGRAVED, BLACK-ENAMEL-FILLED TEXT 19 mm (3/4") TALL, WITH A 25 mm (1") MARGIN AT EACH END OF THE NAME PLATE.



DATE	BY
DATE	BY

PLANT SURVEYED, LAYOUT CHECKED, PLAN NO. 125X-HB-(1&2) R-1
 PROFILE SURVEYED, PLAN NO. 125X-HB-(1&2) R-1
 DATE: 8/14/2008
 FILE NAME: 125X-HB-(1&2) R-1



REVISIONS	
NAME	DATE

ILLINOIS DEPARTMENT OF TRANSPORTATION
 U.S. 41 (SKOKIE HIGHWAY)
 AT IL ROUTE 132
 COMBINED SERVICE
 DISCONNECT PEDESTAL
 SCALE: NONE
 DATE: 05/07/08
 DRAWN BY: FO
 CHECKED BY: DEM